

Designed to



**PERFORM
WITH THE SEA**

WELCOME TO MACGREGOR

- 1 We are MacGregor
- 2 Our customer promise
- 3 Solutions & services



Name of the presenter, title lorem ipsum



MACGREGOR

A woman with short dark hair, wearing a white hard hat with the Macgregor logo, a white button-down shirt, and a blue lanyard with an ID badge, stands in the foreground. She is smiling slightly. Behind her is a large, orange industrial machine, possibly a crane or drilling rig, with various components and a flag visible. The background is slightly blurred. A thick red vertical bar is on the left side of the image.

WE ARE MACGREGOR

WE ARE PART OF **CARGOTEC**

Smarter cargo flow for a better everyday

11,500 

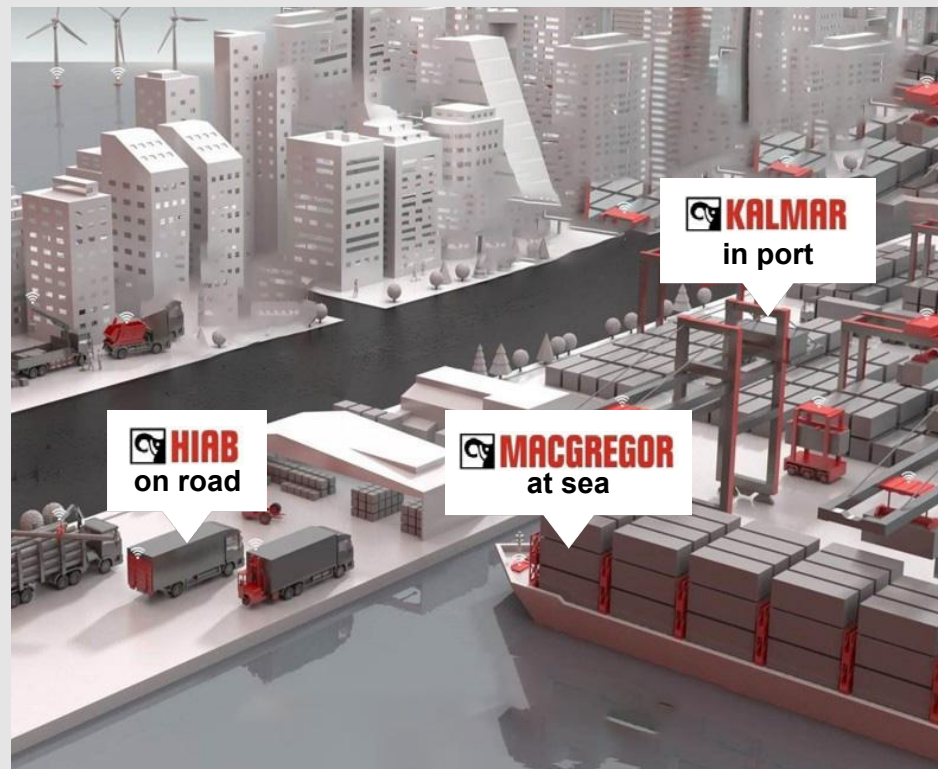
experts working around the world

100 

countries

3.3 

€ billion 2020 sales



 **MACGREGOR**

FROM THE FIRST STEEL HATCH COVER...

Patented in 1929



 **MACGREGOR**



TO ONE OF THE WORLD'S LARGEST CARGO SYSTEMS

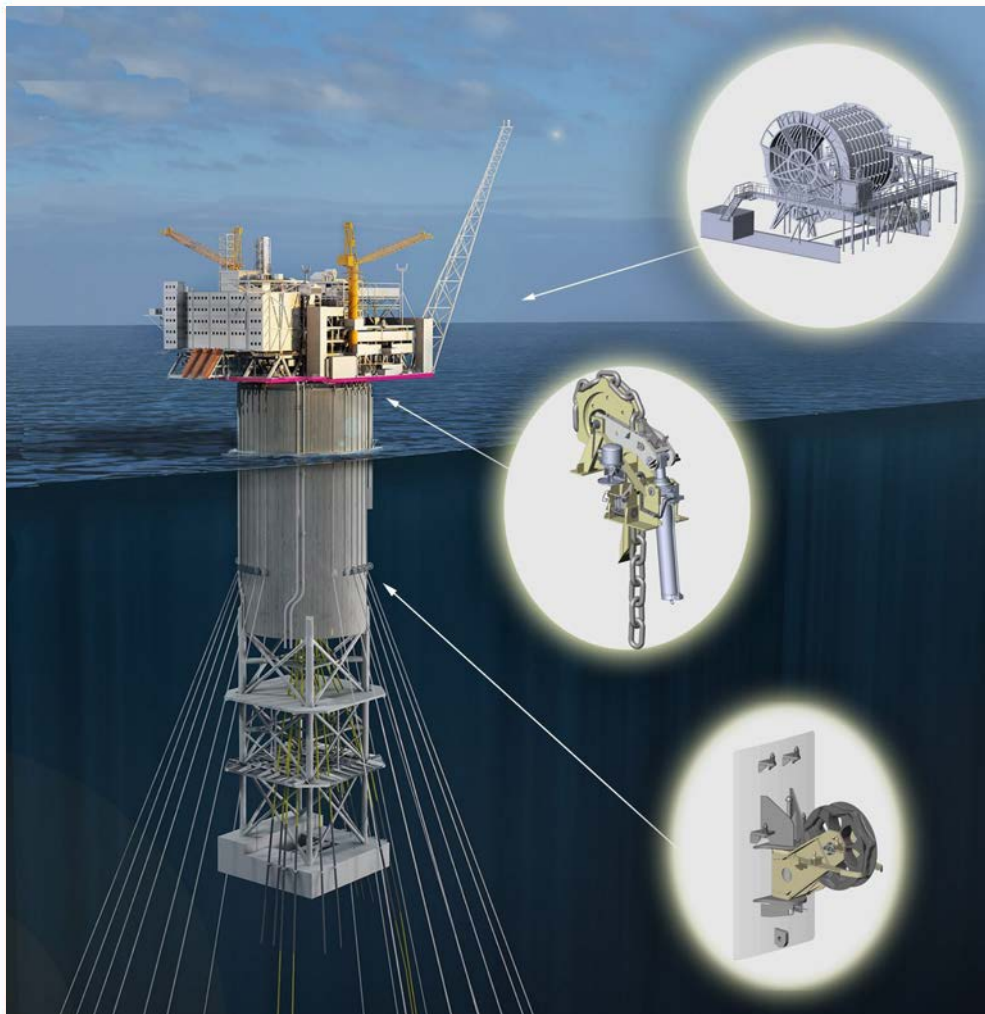
MacGregor designed and delivered the cargo system for the world's largest containership, MSC Gülsün, which commenced operation in 2019

FROM THE FIRST HAND OPERATED WINCH...

Developed in 1875



 **MACGREGOR**



TO ADVANCED MOORING SYSTEMS

Advanced mooring systems for deepwater
floating production applications

THE LEADER IN

SUSTAINABLE CARGO AND LOAD HANDLING

1,987



experts working
around the world

50%



Equipment installed on
every second ship at sea

SERVING CUSTOMERS AROUND THE WORLD



850
specialists



60
service centres



31
countries

42 000 
spare part orders per annum



INCREASING CONNECTIVITY THROUGH DIGITALLY-ENABLED SOLUTIONS

A photograph of three workers in high-visibility yellow Macgregor jackets and white hard hats at an industrial site. They are standing on a metal platform, looking at a large orange industrial component being lifted by a crane. The worker on the right is pointing towards the component. The background shows industrial structures and a cloudy sky.

OUR CUSTOMER PROMISE

SERVING CUSTOMERS THROUGHOUT THE LIFECYCLE



Initial design



Shipbuilding



Operation at sea

An aerial photograph of a container ship's deck, showing a dense arrangement of multi-colored shipping containers (red, blue, orange, yellow, green) stacked in neat rows. The ship is moving through dark blue water, with white wake visible. The deck area at the stern is visible, showing various pieces of equipment and yellow safety cones.

MAXIMISE EARNING POTENTIAL

Through effective cargo space
and capacity utilisation

INCREASE AVAILABILITY AND EFFICIENCY

Through intelligent solutions that fully
meet operational requirements



OPTIMISE SAFETY

Through extensive operational
knowledge and experience

ENHANCE ENVIRONMENTAL SUSTAINABILITY

Through reducing inefficiencies and lowering
emissions per carried ton of cargo

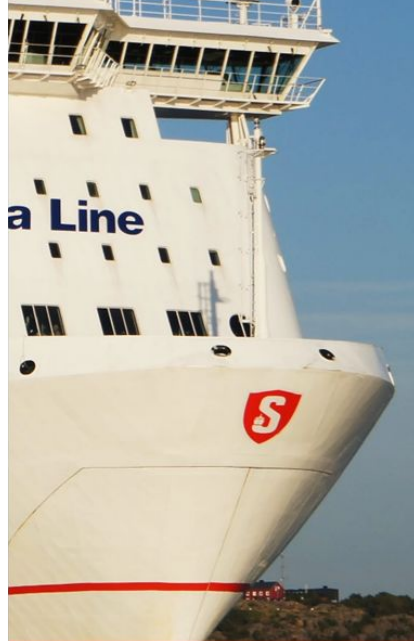


SOLUTIONS & SERVICES

MERCHANT & NAVAL



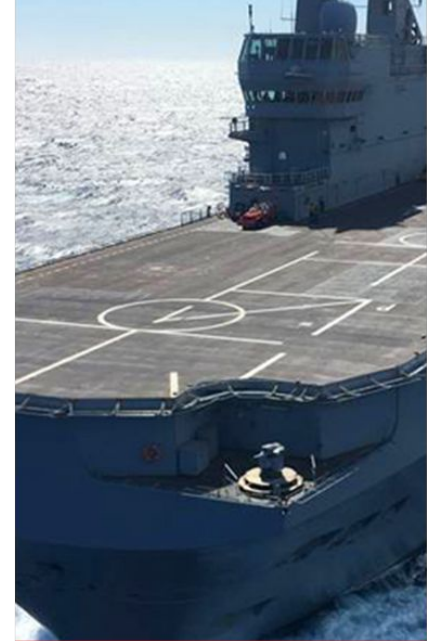
Cargo



Passenger

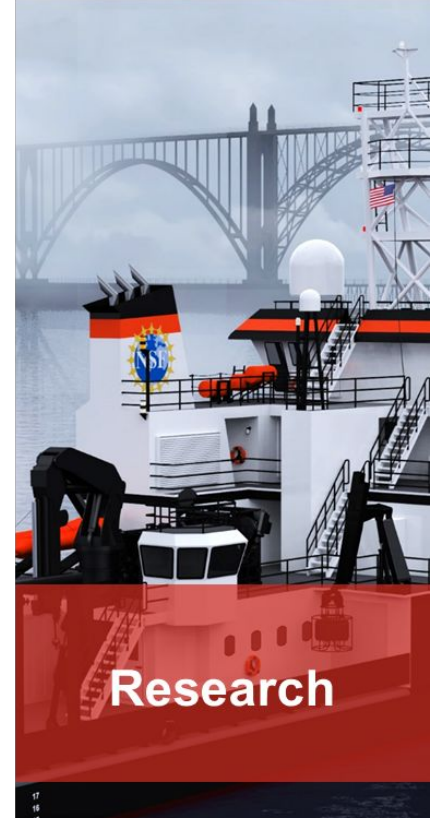


Port & Terminal

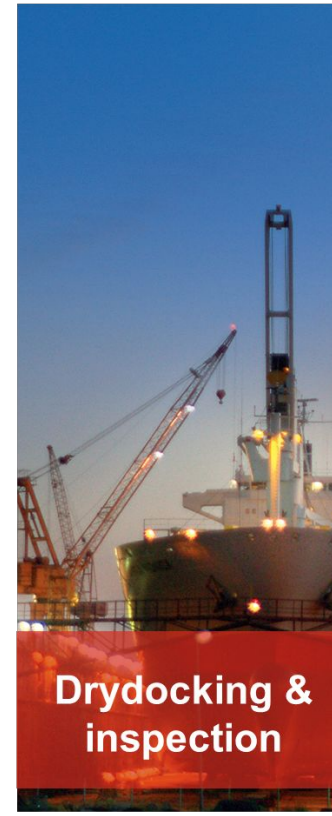
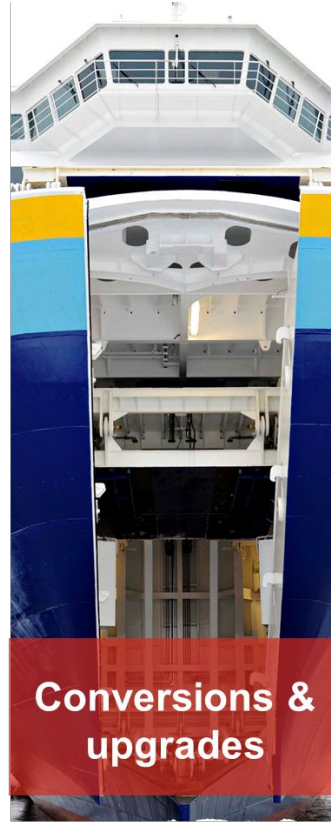


Naval

OFFSHORE, FISHERY AND RESEARCH



SERVICES



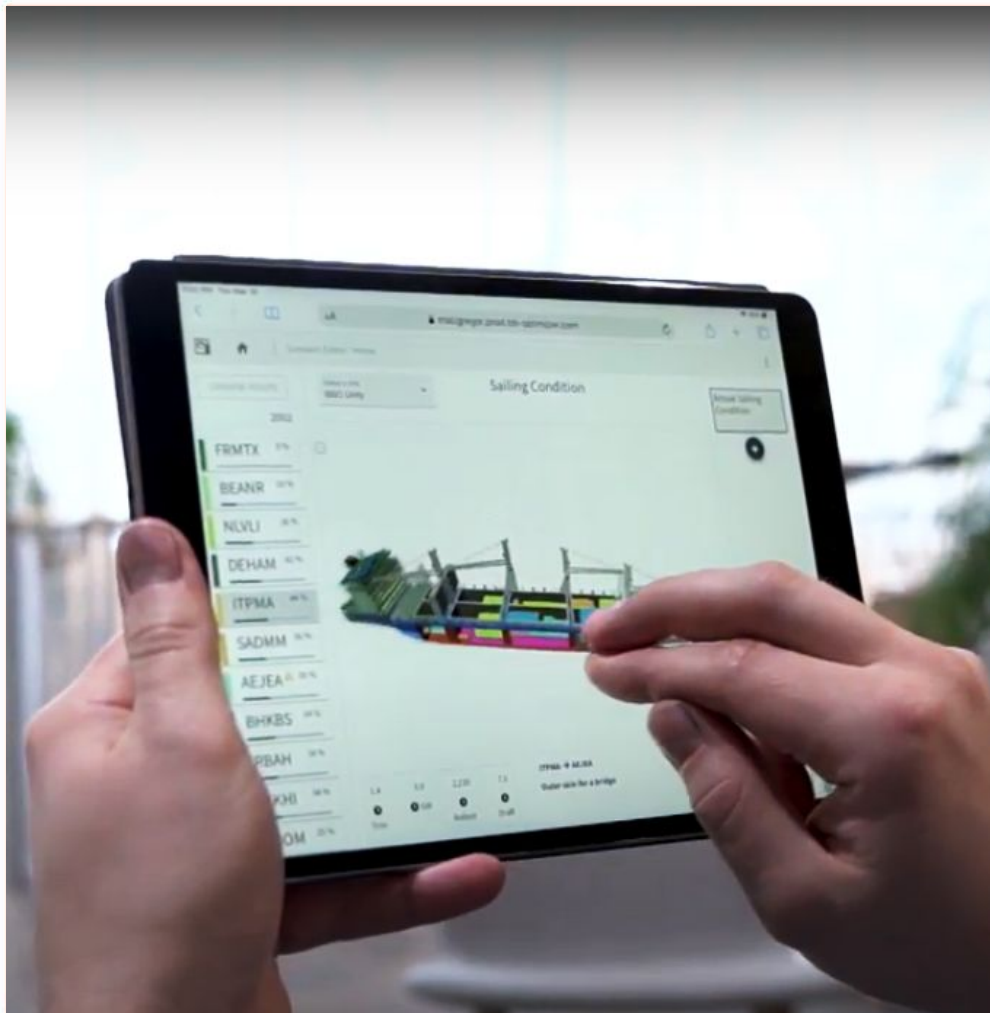
CARGO BOOST

Maximising cargo space utilisation,
efficiency and lowering emissions per
transported unit of cargo

Up to
15%
cargo carrying
capacity increase

Over
100
upgrades
completed





BREAKBULK OPTIMISER

Improving cargo carrying efficiency and utilisation through increased information transparency and reduced planning complexity



ONWATCH SCOUT

Real time info and recommendations on mission critical equipment. Enhanced ship to shore collaboration and minimum time to act.

OnWatch connects installed equipment to advanced monitoring systems that continuously analyse component condition and predict maintenance needs **based on specialist knowledge and machine learning models.**

- Fleet Status
- System Diagnostics
- Alarms
- Analytics
- Manuals
- Recommended actions
- Virtual eCommerce



SIMULATION SERVICES

Advanced training to reduce operational risk

150 courses held annually

AUTONOMOUS DISCHARGING CRANE

Minimises total discharging time through more
efficient and safer operation



AUTOMATED MOORING SYSTEM

Enables mooring operations to be undertaken safely, efficiently and without human intervention



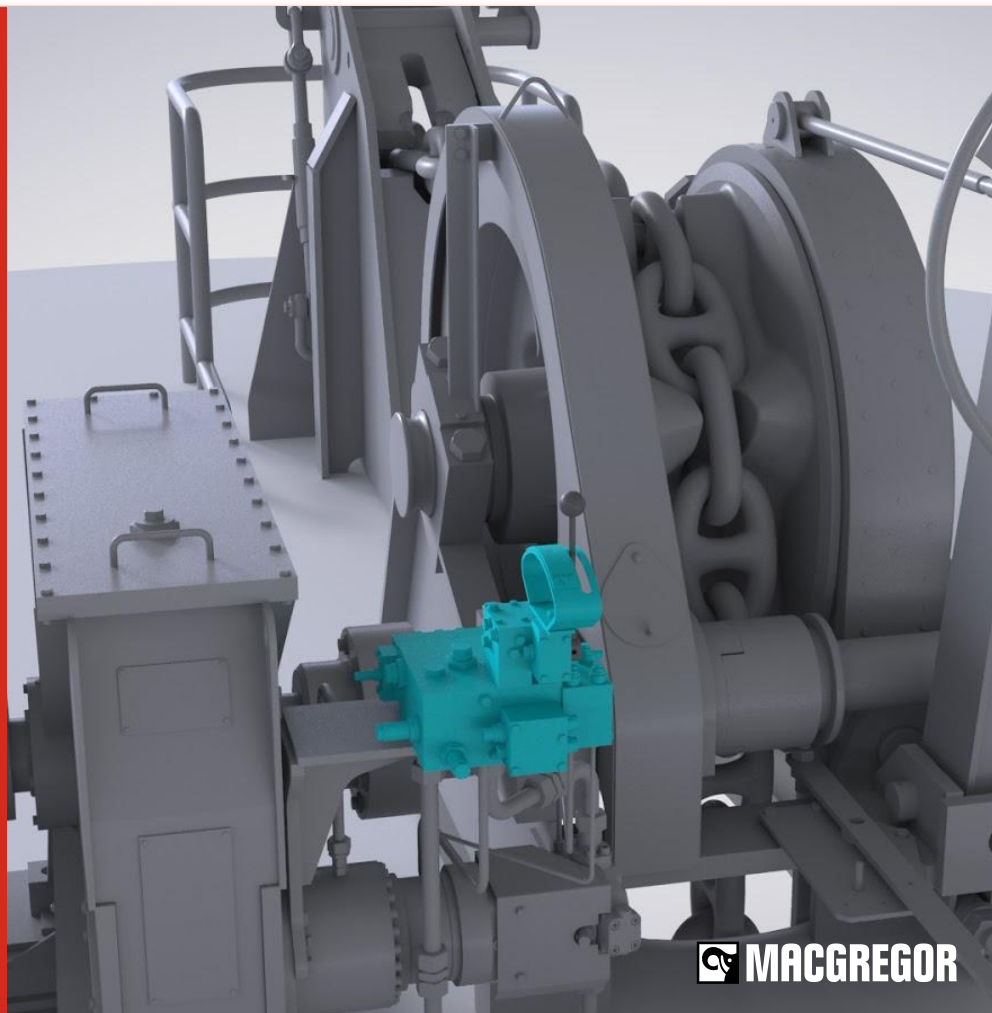
INTELLIGENT CONTROL BLOCK

Enables safe anchor lifting and prevents
against equipment damage in severe
weather conditions

Upgrade is possible within

1

day per TTS windlass





FIBRETRAC

Enables full lifting capacity to be used over a wide range of water depths, increasing scope of operation



A fibre rope crane with 150T SWL capacity can replace a 250T SWL capacity steel wire crane when lifting loads at depths in excess of 3000m

HORIZON OFFSHORE ACCESS SYSTEM

Fully enclosed Walk-to-Work solution with all-electric regenerative drivetrain

Up to

4m

Significant
Wave Height

Up to

90%

Power
Regeneration



 **MACGREGOR**



COLIBRI 3D COMPENSATED CRANE

Third generation 3D technology, with anti-sway
and wind gust compensation.

Up to
10T
3D Lifting
Capacity

Up to
20m/s
Wind
Speed

 **MACGREGOR**



VOYAGE DATA RECORDER

Reducing maintenance expenses and enabling
convenient retrofitting

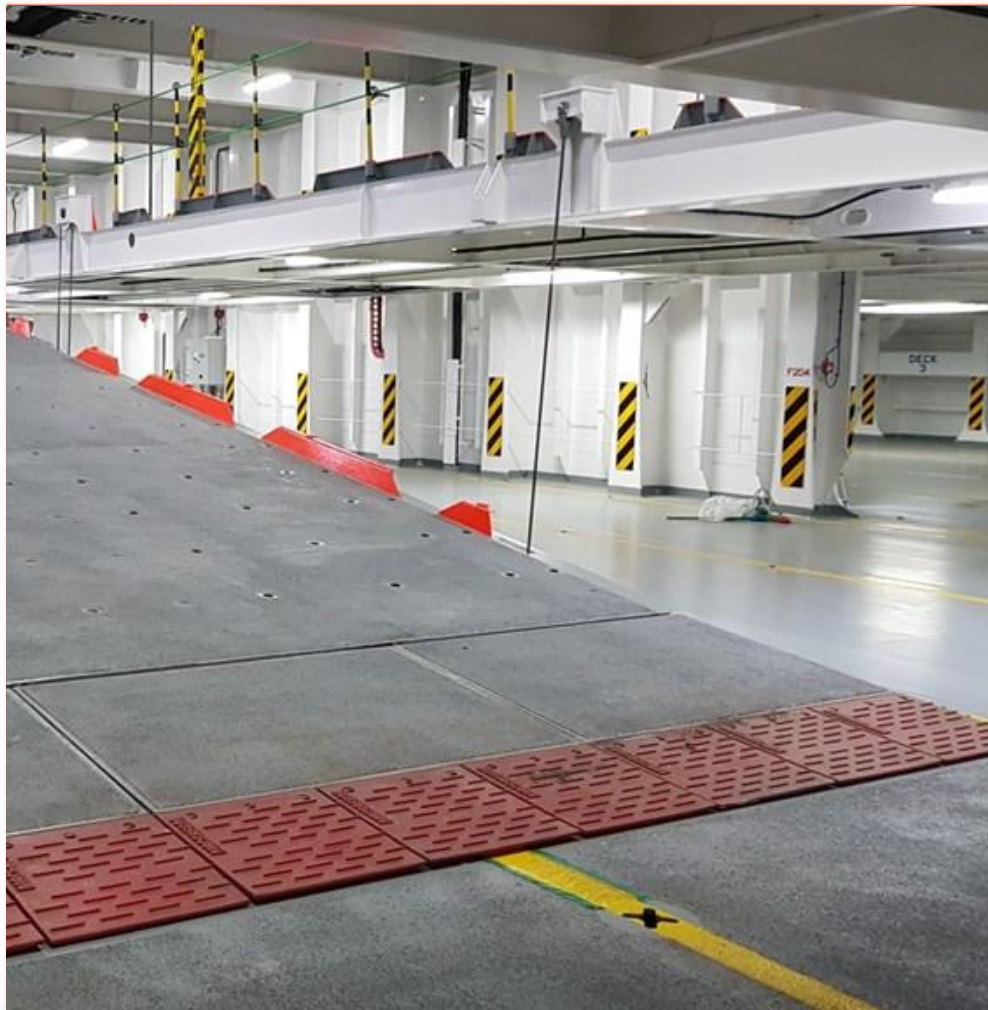
24/7 Remote support + 400
engineers worldwide



MARITIME DATA ENGINE

Providing full access to normalised and standardised fleet data

Real-time visualisation of fleet data to support extensive data analytics and performance monitoring



SOFT FLAPS

Cost-effective solution to reduce
loading and unloading noise in ports

An aerial photograph of a container ship's deck, filled with stacks of colorful shipping containers in shades of red, yellow, blue, and green. The ship is moving through a deep blue sea under a bright blue sky with scattered white clouds. In the distance, another container ship is visible on the horizon, and a city skyline can be seen on the far shore.

**DESIGNED TO PERFORM
WITH THE SEA**

MACGREGOR JOURNEY WITH KEY MILESTONES

