

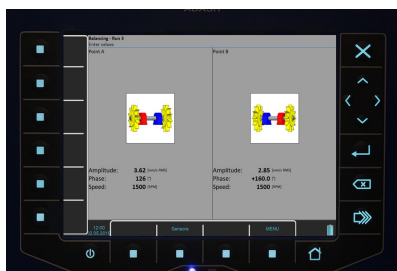
CMT Vibration Analyser



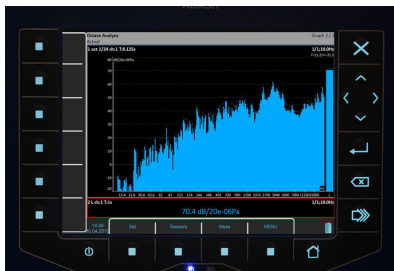
CMT Vibration Analyser is a professional and robust 4 channel Vibration Analyser / Recorder, which is a valuable tool for maintenance engineers for fault diagnosis, balancing and data collection / recording.

Measurement of 4 channels simultaneously provides a lot of flexibility. For example you can easily get information about the alignment by measuring the radial and axial vibration across the coupling of the motor and pump.

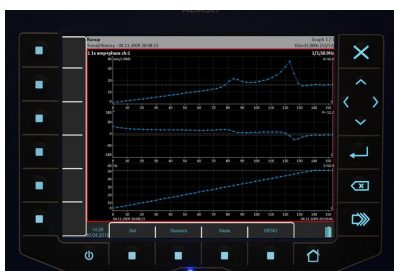
64GB disc space allows 20 hours continuous recording of 4 channel raw signals up to 25.6 kHz. Even under pressure, you don't have to worry that important data could be missed.



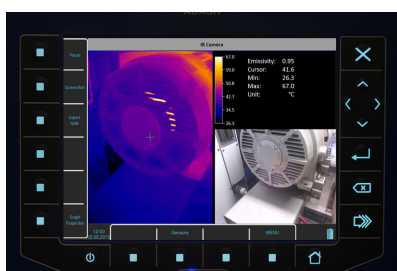
Balance



Octave Analysis



Run Up (Coast Down)



IR Camera

Vibration Analyser contains these measurement modes:

- Signal Recorder
- Signal Analyser
- Data Collector (Route measurements)
- Run Up (Coast Down) measurements
- Balancer
- FASIT – Fault Source Identification Tool
- Lubrication Control
- Octave Analysis
- Stethoscope
- Bump Test
- Ultrasound
- Thermal Camera

Key features:

- FASIT - Fault Source Identification Tools
- FFT spectrum with 3,276,800 lines
- 4 AC + tacho + 4 DC channels (temp. pressure..)
- Balancing Advisor helps you with balancing

Ordering Information

VIB-CT-50065

Vibration Analyser VA5Pro

(Including one acceleration sensor and a case)

VIB-CT-50006

Laser Tacho Probe

VIB-CT-50067

Thermal Imaging Camera

Range: -10°C ~ 150°C

VIB-CT-50038

US-Microphone

VIB-CT-50046

Pure leather shoulder case for VA4Pro

VIB-CT-50017

PELTOR Heavy Duty Headphone

VIB-CT-50005

Acceleration Sensor Complete

Sensitivity 100 mV/g

Sealing IP68

Resonance Freq. 30 kHz

Operating Temp. -55 - 140 °C

Connector MIL2

VIB-CT-50009

5 m Extension Cable for Sensor

push / pull or Binder 712

VIB-CT-50010

10 m Extension Cable for Sensor

push / pull or Binder 712