



ANALYTICAL LABORATORIES (SINGAPORE) PTE LTD or ANALABS, which was established in 1955, is a leading and renowned accredited commercial testing laboratory in Singapore.

ANALABS is an ISO/IEC 17025 accredited and an ISO 14001 certified company.

- ISO/IEC 17025 specifies the requirements for the competence of testing and calibration laboratories to carry out tests and/or calibrations, including sampling.
- ISO 14001 specifies the requirements of an environmental management system.

ANALABS is also recognised as a bizSAFE Level 4 enterprise.

- bizSAFE is a 5-step programme administered by our Ministry of Manpower and our Workplace Safety and Health Council. It recognises company for their efforts in managing safety and health hazards in their workplaces.

We provide a broad range of independent laboratory tests, including chemical and microbiological tests, along with consultancy services to support our customers in the Asian region.

We have considerable experience and competence in providing environmental and workplace monitoring services related to:

- Industrial hygiene (air pollutants in workplace), including airborne and bulk asbestos
- Source emission
- Indoor air quality
- Environmental baseline studies / Environmental site assessments
- Ambient air quality
- Cleanroom environment, and
- Noise.

With the multi-disciplinary team of professional staff along with state-of-the-art equipment and technologies, we conduct an array of laboratory tests on electronics and disk drive related samples.

These tests include, but are not limited to:

- Ion chromatography
- Fourier transform infrared spectrometry
- Liquid particle counts
- Hard particle analyses
- Dynamic headspace outgassing, and
- Non-volatile residues.

We have extensive expertise in testing:

- All types of water, including drinking and ballast water
- Trade effluent
- Traditional medicines
- Health supplements
- Cosmetic products
- Electrical and electronic equipment (RoHS, Restriction of use of hazardous substances), and
- Biological materials, namely human blood and urine.

We also provide the following tests and studies to support our customers:

- Toxicity tests on dredged soil/sludge for disposal
- Leachate tests on industrial waste for land filled disposal, and
- Efficacy studies whereby antibacterial and antifungal tests are performed on toiletries, cosmetic products, etc.

In order to anticipate and meet our customers' requirements, we are committed to investing in a broad range of sophisticated and robust equipment that includes, but are not limited to:

- Gas chromatograph-mass spectrometer
- Inductively coupled plasma-mass spectrometer
- Ultraviolet-visible spectrophotometer
- High performance liquid chromatograph
- Ion chromatograph
- Total organic carbon analyser
- Scanning electron microscope with energy dispersive X-ray analyser
- Fourier transform infrared spectrometer
- Mercury analyser
- Liquid particle counter, and
- Flow injection analyser.

Our staff are committed to attending to customers promptly and also providing customers with accurate and reliable test results as customer satisfactions are of the utmost importance to our continued success.

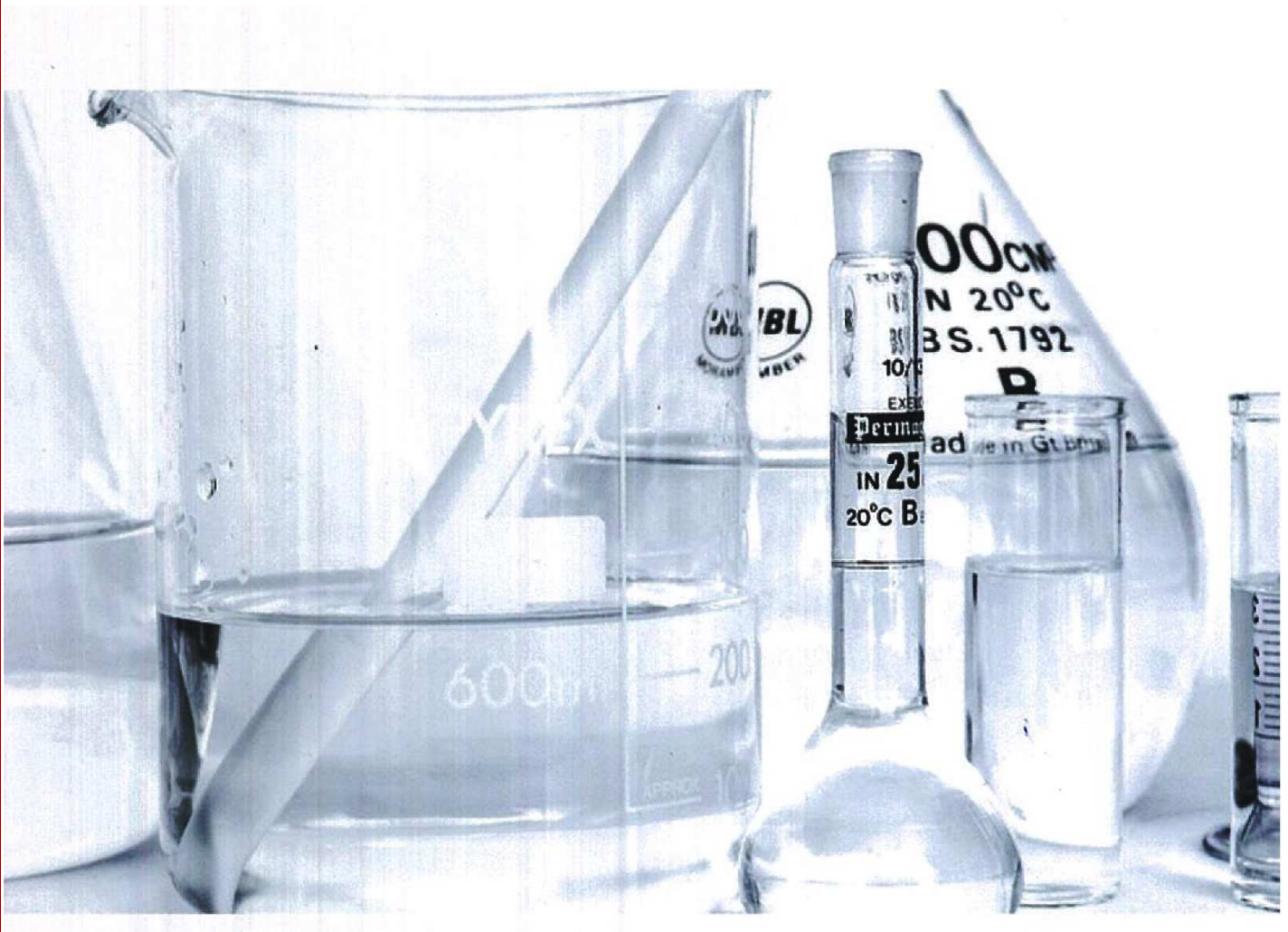
Our trained, dedicated and competent staff manage the day-to-day running of the company as well as to troubleshoot any issues or problems that may arise.

By and large, we aim to be your preferred partner and a one-stop testing service provider.

ANALABS Marine Environmental Testing

Our comprehensive marine environmental testing services for crude and trade vessels includes:

- Ballast water, sampling and analysis
- Potable or drinking water sampling and analysis
- Bilge water sampling and analyses
- Gray water sampling and analyses
- Gas emission monitoring
- Noise, Vibration and IAQ monitoring
- Legionella testing
- Asbestos inspections, audit and assessment



TESTING, MONITORING, SURVEYING AND SAMPLING SERVICES

Quality Assured | Competency Attended | Add Value



WE PROVIDE ENVIRONMENTAL & WORKPLACE MONITORING SERVICES

INDUSTRIAL HYGIENE (AIR
POLLUTANTS IN WORKPLACE)
OR IH MONITORING

IH monitoring is a process of evaluating and documenting employees' exposures to chemical, biological, physical hazards, etc. Over exposure to hazardous substances such as dust, fume and vapour may cause serious health effects on the employees.

We have extensive experience in conducting industrial hygiene monitoring, interpreting IH test results and providing relevant recommendations.



SOURCE EMISSION MONITORING

We offer monitoring services to determine the amount of air pollutants emitted from various types of emission sources, including boilers, incinerators, scrubbers, etc.

With state-of-the-art equipment and technologies, together with trained staff, our environmental services team has expertise in carrying out source emission monitoring, interpreting source emission test results and providing relevant recommendations.



INDOOR AIR QUALITY MONITORING

As the public recognises the importance of a healthy, comfortable and greener indoor environment, their awareness and demand for good indoor air quality (IAQ) has increased.

Our environmental services team has extensive experience in investigating IAQ problems in commercial buildings and office premises, including analysing indoor air quality test results and providing relevant recommendations.

ENVIRONMENTAL BASELINE STUDIES (EBS) / ENVIRONMENTAL SITE ASSESSMENT (ESA)

The primary goal of conducting EBS or ESA is to investigate and assess the extent of contamination of the site, including sampling and testing on soil and groundwater.

Our environmental services team has expertise and experience in carrying out EBS or ESA, including evaluating EBS or ESA test results and providing relevant recommendations.



AMBIENT AIR QUALITY MONITORING

Air pollution can cause harmful effects on the environment and human health. Pollutants emitted from stationary and mobile sources can affect the air quality.

Our environmental services team has extensive experience in investigating air pollution problems, including evaluating ambient air quality test results and making relevant recommendations to our customers.



NOISE MONITORING

Noise pollution can cause hearing impairment, hypertension, tinnitus, etc.

Our noise monitoring competent persons have extensive experiences in investigating Occupational noise hazard and environmental noise pollution, including interpreting noise test results and providing relevant recommendations.

TESTING ON ELECTRONICS & DISK DRIVE RELATED SAMPLES

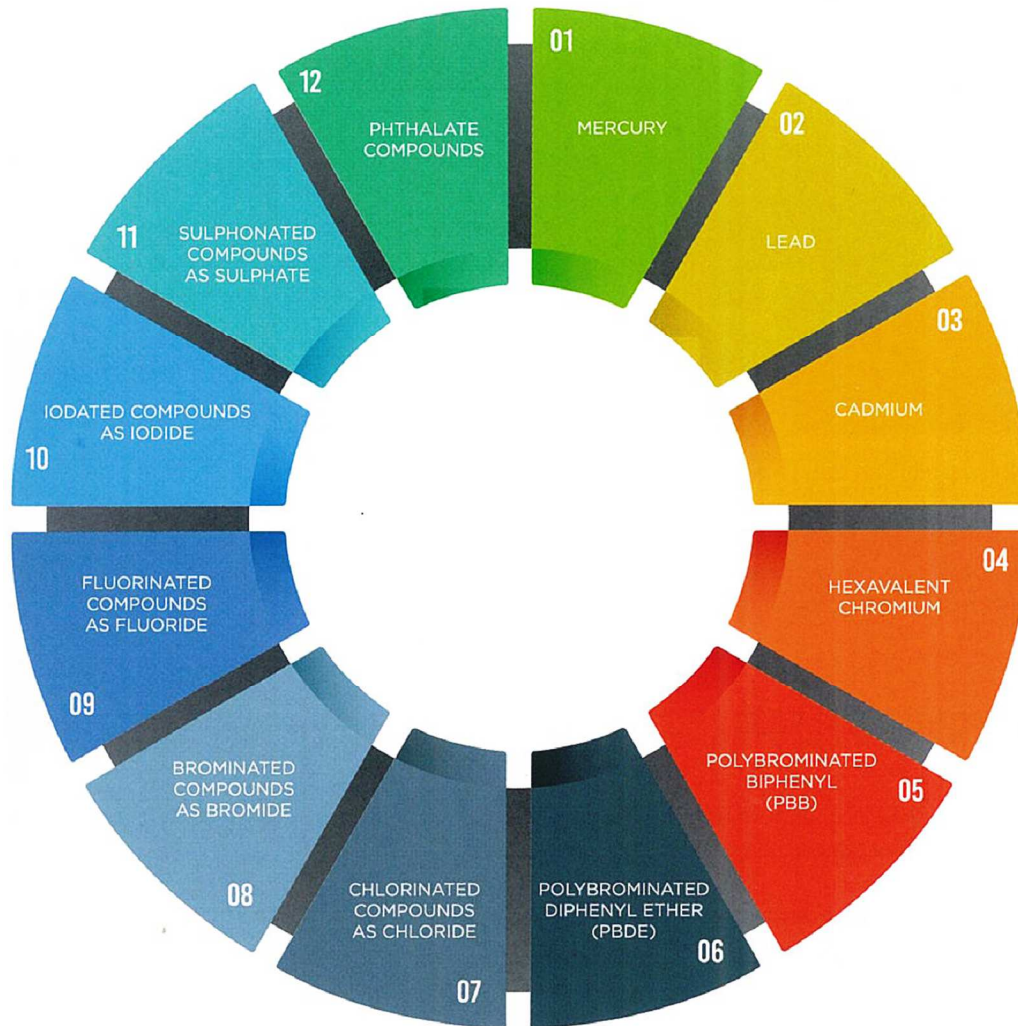
We have extensive experiences and expertise in carrying out laboratory tests on electronics and disk drive related samples.

The list of tests includes:

- Ionic contaminants
- Silicone oil
- Phthalates
- Liquid particle counts
- Hard particles
- Dynamic headspace outgassing
- Non-volatile residues, and
- Cleanliness tests on cleanroom parts, swabs, gloves, wipes, plastic bags, moisture barrier bags, packaging materials, other cleanroom related materials, etc.

Additionally, we have actively participated in the correlation studies of some of the tests in order to ensure the accuracy and reliability of our test results.

with state-of-the-art equipment and technologies, together with trained staff, our laboratories also have expertise to perform RoHS tests for compliance with RoHS (Restriction of use of hazardous substances) directives and have been accredited to carry out the following tests:



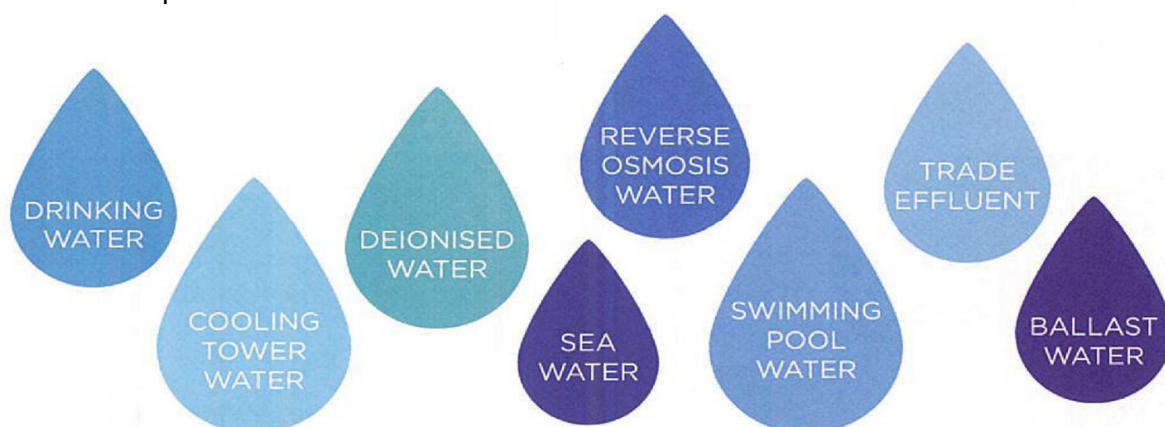
EFFICACY STUDIES

We carry out efficacy studies whereby antibacterial and antifungal tests are performed on toiletries, cosmetic products, etc.

TESTING ON WATER SAMPLES



We have extensive experiences and expertise in carrying out laboratory tests on various types of water samples:



The water samples in our laboratories are also analysed in accordance with the local and international standards, for instance, WHO Guidelines for Drinking Water Quality, PUB's Typical Water Quality Values, Sewerage and Drainage (Trade Effluent) Regulations, Environmental Public Health (Cooling Towers and Water Foundations) Regulations, JTC's Guidelines on Environmental Baseline Study, etc.

We also help our customers to perform

- Laboratory scale treatability studies on water samples, and
- In-situ measurements of pH, resistivity and conductivity of water samples.

The list of tests and activities include:

- Biochemical oxygen demand
- Chemical oxygen demand
- Conductivity
- Hardness (calcium and total)
- Oil and grease
- Silt density index
- Total dissolved solids
- Total suspended solids
- Turbidity
- Elements such as arsenic, copper, lead, cadmium, nickel, magnesium, iron and sodium
- Standard plate counts
- Total coliform counts
- Escherichia coli
- Faecal coliform counts, and
- Sampling of water, etc



SURVEYING AND TESTING ON AIRBORNE & BULK ASBESTOS

Asbestos has been widely used as they are resistance to heat, fire and chemicals. They also do not conduct electricity.

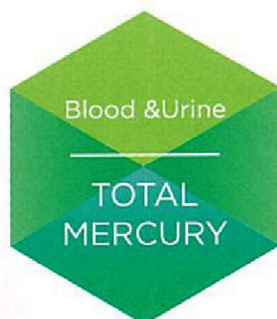
Asbestos is a known human carcinogen.

Our environmental services team has extensive experience and expertise in carrying out surveys and laboratory tests on airborne and bulk asbestos, including evaluating asbestos test results and providing relevant recommendations.

TESTING ON BIOLOGICAL MATERIALS, NAMELY HUMAN BLOOD & URINE



The list of tests includes:



TESTING ON TRADITIONAL MEDICINES, HEALTH SUPPLEMENTS & COSMETIC PRODUCTS

The list of tests includes:

- Total aerobic microbial count
- Total yeast & mould count
- Staphylococcus aureus (coagulase positive)
- Pseudomonas aeruginosa
- Escherichia coli
- Salmonella spp.
- Candida albicans, and
- Heavy metals such as arsenic, copper, lead, mercury and cadmium.



TESTING ON SOIL, SLUDGE & INDUSTRIAL WASTE

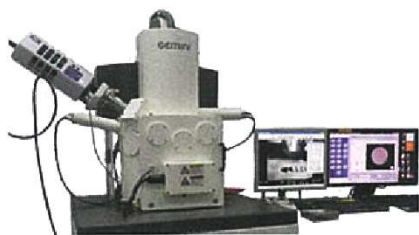
The list of tests includes:

- Total aerobic microbial count
- Total yeast & mould count
- Staphylococcus aureus (coagulase positive)
- Pseudomonas aeruginosa
- Escherichia coli
- Salmonella spp.
- Candida albicans, and
- Heavy metals such as arsenic, copper, lead, mercury and cadmium.

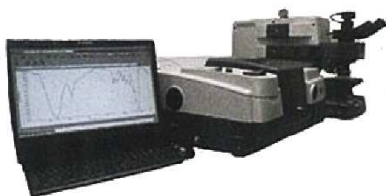


In order to anticipate and meet our customers' requirements, we are committed to investing in a broad range of sophisticated and robust equipment that includes, but is not limited to:

- Gas chromatograph-mass spectrometer
- Inductively coupled plasma-mass spectrometer
- Ultraviolet-visible spectrophotometer
- High performance liquid chromatograph
- Ion chromatograph
- Total organic carbon analyser
- Scanning electron microscope with energy dispersive X-ray analyser
- Fourier transform infrared spectrometer
- Mercury analyser
- Liquid particle counter, and
- Flow injection analyser



Scanning electron microscope
with energy dispersive X-ray
analyser



Microscopic fourier transform
infrared spectrometer



Microscope



Inductively coupled plasma -
mass spectrometer



Headspace gas chromatograph -
mass spectrometer



Total organic carbon analyser



01 55th Anniversary Celebration



02 Fire Drill

IN SUMMARY

Our staff are committed to attending to customers promptly and also providing customers with accurate and reliable test results as customer satisfactions are of the utmost importance to our continued success.

We do believe in establishing good customer relationships and offering them a comprehensive range of value-added services.

We have made every effort to meet our customers' requirements, which range from meeting regulatory compliances to anticipating future environmental issues.

Our trained, dedicated and competent staff manage the day-to-day running of the company as well as to troubleshoot any issues or problems that may arise.

By and large, we aim to be a preferred partner and a one-stop testing service provider.

Further updates are also available on our website at www.analabs.com.sg.



ANALYTICAL LABORATORIES (SINGAPORE) PTE LTD

8 Kaki Bukit Place Singapore 416186

Telephone : +65 67460886

Fax : +65 67463830

Email : sales@analabs.com.sg

Website : www.analabs.com.sg

ANALABS Services related keyword tag

Air Dispersion Modeling	Chloroform	IMO MEPC.184(59)	Oxygen
Air Dispersion Studies	Continuous Air Monitoring	IMO Resolution A.468 (XII)	Personal Air Sampling
Air Monitoring	Crystalline Silica	IMO Resolution MSC-337(91)	Potable Water
Airborne Microbiological Contaminations	Dibromoacetic Acid	Indoor Air Quality	Quality, Health, Safety and Environment
Ambient Air Quality	Dibromochloromethane	Indoor Air Quality (IAQ)	Sampling Services
Ammonia	Dichloroacetic Acid	inspection Services	Scrubber Washwater Sampling and Testing
Asbestos	Dichlorobromomethane	Legionella	Sulfur dioxide (SO ₂)
Asbestos Identification	Dioxin Monitoring and Analysis Services	Man-made Fiber	Suspended Particulates Matter
Asbestos Sampling	Drinking Water	Mineral Fiber	Testing Services
Ballast water sampling	Dust	monitoring and assessment	Total Residual Oxidizers (TRO) as Cl ₂
Bilge Water	Dust Particle Pollution	Monobromoacetic Acid	Total trihalomethanes
Black water	Emissions	Monochloroacetic Acid	Tribromoacetic Acid
Bromochloroacetic Acid	Enterococci	Moulds	Trichloroacetic Acid
Bromodichloroacetic Acid	Escherichia coli	Nitrogen Oxides (Nox)	U.S. EPA Vessel General Permit (U.S. EPA VGP)
Bromoform	Fresh Water	Noise	Vibration
Carbon Dioxide (CO ₂)	Fugitive Emission	Occupational and Industrial Hygiene Services	Volatile Organic Compounds
Carbon Monoxide (CO)	Fungi	Odor	Volatile Organic Compounds
Chlorate	Gray Water	Odor Dispersion Modeling	Waste Water
Chlorine Dioxide (ClO ₂)	Haloacetic acids	Odor Dispersion Studies	Workplace Monitoring
Chlorite	Heterotrophic plate count	Onboard Air Emissions testing	Yeasts
Chlorodibromoacetic Acid	IMO D2	Onboard Analysis of Compliance Samples	