



PUMPS AND SPARE PARTS

FLUID GLOBAL SOLUTIONS

►► *Three Screws Pump* ◄◄

MASTER DISTRIBUTOR

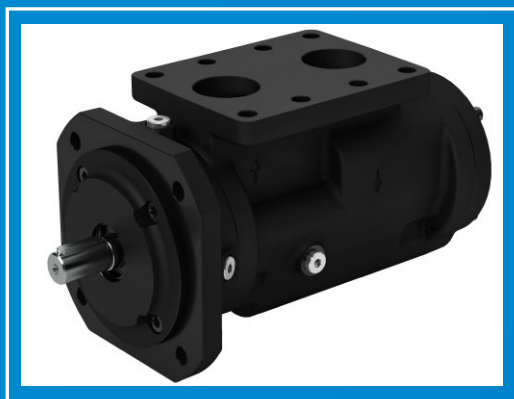


THREE SCREWS PUMP

SFO

Technical data sheet

Models	25 - 32 - 40
Drive loading	No axial or radial loads
Flow	From 12 to 75 L/min (at 1.450 rpm)
Shaft rotation	Clockwise (from shaft end)
Shaft speed	From 500 to 3.600 rpm
Outlet pressure	Up to 20 bar continuous, up to 40 bar intermittent
Inlet pressure	Min. 0.7 bar, max. 1.5 bar (for higher pressures please contact SETTIMA)
Fluids	Mineral oils, synthetic fluid or emulsions, bunker oils, furnace oils, ecologic fluids, fuel oils (HFO, MDO, LFO, MGO), marine distillate and residual fuels
Viscosity	Down to 2 cSt
API Seals	Lip seal: NBR, Viton, EPDM, other on request - Mechanical seal Lip + Mechanical seal
Acoustic emissions	From 50 up to 58 db (A) at 2.950 rpm
Body	Cast iron GJL 250 EN 1561
Screw set	Steel (cast iron for secondary screws on request)
Environment temperature	From -20 up to +50 C
Fluid temperature	From -20 up to +155 C
Recommended filtration	Permitted 70 µ m (20 µ m in case of low viscosity)

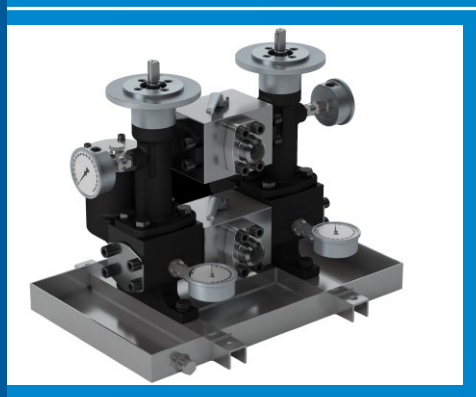


We can also provide a **MAGNETIC COUPLING** solution

FOTP

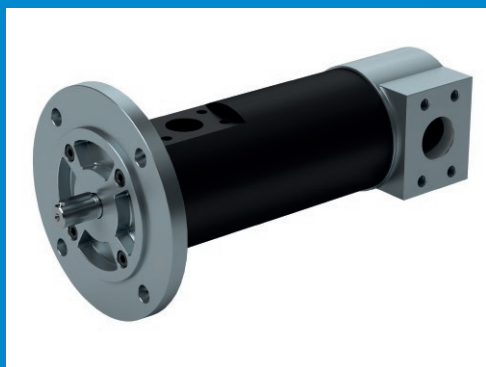
Technical data sheet

Models	20 - 25 - 32 - 40
Flanges	ISO 3019/2
Connections	SAE 3000 from 1"
Flow	From 8 to 150 L/min (at 3.000 rpm)
Shaft rotation	Clockwise (from shaft end) for counter clockwise please contact Settima
Shaft speed	From 500 to 3.600 rpm
Outlet pressure	Up to 40 bar
Inlet pressure	Min. -0.7 bar max. 8 bar (for higher pressures please contact SETTIMA)
Fluids	Fuels, Marine distillate fuels, Marine residual fuels, all fuels according to latest ISO 8217 international standard (DMX, DMA, DMB, DMC, DMZ)
Viscosity	Down to 2 cSt (as per latest ISO 8217 international standard)
Seal	Mechanical seal: NBR, FKM, EPDM - Magnetic Coupling FGM
(optional) Acoustic emissions	From 55 up to 58 db(A) at 2.750 rpm
Body	Molten cast iron
Screw set	Steel, core hardened steel
Environment temperature	From -20° up to +50°C
Fluid temperature	From -20° up to +150°C
Recommended filtration	Permitted 70 µ m (20 µ m in case of low viscosity)

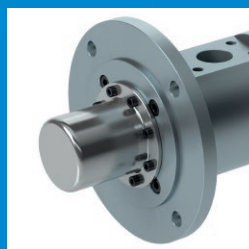


We can also provide a **MAGNETIC COUPLING** solution

THREE SCREWS PUMP



We can also
provide a
**MAGNETIC
COUPLING**
solution



SMT

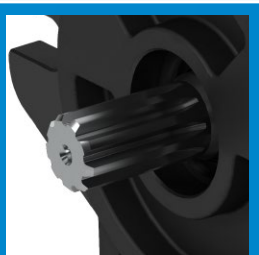
Technical data sheet

	EU standard models	US standard models
Models	20 - 25 - 32 - 40 - 45 - 55 - 60 - 70 - 80	20 - 25 - 32 - 40 - 45 - 55 - 60 - 70 - 80
Motor connection (male shaft type)	ISO 3019/2	SAE
Motor connection (AC Type pumps)	IEC standard (for direct coupling with motor)	NEMA standard (for direct coupling with motor)
Ports	BSPP - SAE 3000	NPT
Flow	From 4 to 1.220 L/min	From 1 to 1.800 GPM (at 1.750 rpm)
Shaft rotation	Clockwise (from shaft end), suitable also for counter clockwise rotation	
Shaft speed	From 500 to 3.600 rpm (contact Settima for speed below 1000 and over 1.800)	
Outlet pressure	Up to 80 bar	
Inlet pressure	Min. -0.7 bar max. 3 bar	
Fluids	Mineral oils, synthetic fluid or emulsions, bunker oils, furnace oils, ecologic fluids, fuel oils (HFO, MDO, LFO, MGO)	
Viscosity	From 2 up to 100.000 cSt (always contact Settima)	
Seal	NBR, FKM, EPDM, mechanical seals, lip seals, magnetic coupling Acoustic emissions	
	From 52 up to 68 db(A) at 2.950 rpm	
Body	Extruded aluminium alloy / Cast iron, Carbon steel,	
Screw set	Steel for primary screw, cast iron for secondary screws / Core hardened steel screws, surface treated screws on request	
Environment temperature	From -50° up to +60°C	
Fluid temperature	From -50° up to +300°C	

CONTINUUM

Technical data sheet

Models	28 - 33 - 38 - 47 - 55 - 63 - 72
Flanges	Group 1 - Group 2 (European, German, BKT, SAE-A) - Group 3 (European, SAE- B) - Group 4 (SAE-D)
Motor connections (male shaft type only)	BSPP (GAS) - SAE 3000/6000 PSI - FL 4 HOLES M6 SU Ø40 DN20 (mentioned connections depend on model)
Installation position	External and/or submersed
Flows	From 3 up to 200 cm ³ - from 4L/min up to 290L/min (at 1.500 rpm) Shaft
rotation	Clockwise (from shaft end) for counter clockwise please contact Settima
Shaft speed	From 150 to 6.500 rpm (contact Settima for speed below 1.000 and over 1.800)
Operating pressure	Max. Continuous: 275 bar, Max. Cycle ON/OFF: 280 bar, Max. Peak: 300 bar
Inlet pressure	0.6 - 3 bar
Fluids	Mineral oil, syntheticoil
Viscosity	from 5 to 800 cSt, recommended: from 32 to 150 cSt, up to 3.000 cSt at start
Seals	NBR, FKM (others on request)
Acoustic emissions	From 52 up to 63 db(A) at 2.950 rpm
Flanges material	Cast iron
Body	Extruded aluminium alloy
Environment temperature	From -15°C up to +60°C
Fluid temperature	From -20°C up to +80°C
Contamination level	Up to 8 NAS (18/17/14 ISO4406) (for heavy duty operations over 150 bar, over 4 working hours/day, 100 cycle/day oil ISO 46)
Filtration	From 25 to 10 µm (for heavy duty operations over 150 bar, over 4 working hours/day, 100 cycle/day oil ISO 46)



We can also
provide a
SPLINED SHAFT
solution



PUMPS AND SPARE PARTS



Phone: +39 0187 1953245

Fax: +39 0187 1953246



Email: sales@fluidglobalsolutions.com

Administration: account@fgsolutions.eu

PEC: fluidglobalsolutionsssl@pcert.postecert.it

Registered office:



Via XXV Aprile, C3

19021 Arcola – LA SPEZIA - ITALY

SHIPSERV: Trade ID: 220420



Linked in

www.fluidglobalsolutions.com