



[www.diesel-partners.com](http://www.diesel-partners.com)



VISION OF THE FUTURE  
TOWARD THE CUSTOMER





# WHAT WE DO

Diesel Partners Korea Co., Ltd, located in Busan, Korea has been established since 2013 with expert experience in the shipping industry & marine logistics co-operating with the most reliable partners in world-wide.

DPC serves and supports its valuable clients with diesel engine spare parts, marine machineries parts, technical services and total marine forwarding services.

We are the one who can consider of keeping your engines runnging sustainably!

## MAIN BUSINESS

- *DIESEL ENGINE SPARE PARTS*
- *AUXILIARY MACHINERIES PARTS*
- *RETROFIT/ANNUAL INSPECTION OF ALPHA LUBRICATOR*
- *EUROPEAN QUALITY PARTS*
- *TOTAL MARINE FORWARDING SERVICE*

# DIESEL ENGINE SPARE PARTS



## MAIN ENGINE

Available for major supply of 2 stroke engine spare parts - MAN, WARTSILA, MITSUBISHI, HANSHIN & etc.



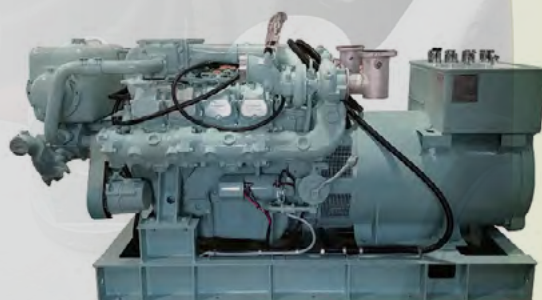
## AUX. ENGINE

Available for core supply of 4 stroke engine spare parts - MAN Holeby, YANMAR, DAIHATSU & etc.



## TURBOCHARGER

Stockiest for MAN Turbocharger major components additionally IHI, MET, ABB Turbocharger & etc.



## GENERATOR SET

MARINE  
MARINE EMERGENCY  
STATIONARY  
ALTERNATOR





# AUXILIARY MACHINERIES PARTS



- BILGE SEPARATOR
- BILGE PUMP
- SLUDGE PUMP
- WATER SEPARATOR



- SPEED MEASURING UNIT
- START MODULE
- TURBOCHARGER TACHOMETER
- ANALOG TACHOMETER



- TEMPERATURE SENSOR
- RUDDER ANGLE INDICATOR
- PRESSURE SENSOR
- WHISTLE





- KEYSTONE BUTTERFLY VALVE

**DongHwa Entec**

- HEAT EXCHANGER

- CONDENSER

**DongHwa Pnueitec**

- FRESH WATER GENERATOR

- DEAERATOR



- BOILER

- IGS SYSTEM

- INCINERATOR



- ACCOMMODATION LADDER

- WIPER & CVS

- DAVIT & CAPSTAN



- MARINE SWITCHGEAR

- MARINE DISTRIBUTION TRANSFORMER

- ROTATING MACHINES FOR MARINE



# ALPHA LUBRICATOR

- Alpha Lubricator System Retrofit & Commissioning Service
- Alpha Lubricator System Up-grade Service
- Maintenance for Alpha Lubricator System
- Regular Maintenance service for Pneumatic control system

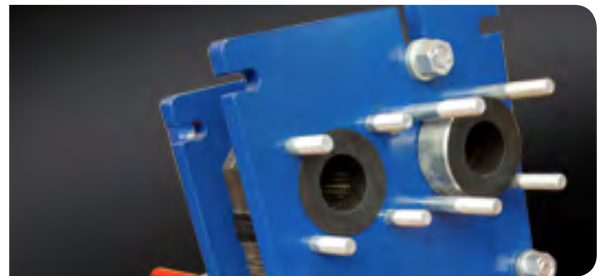


## EUROPEAN QUALITY PARTS

### • Separators



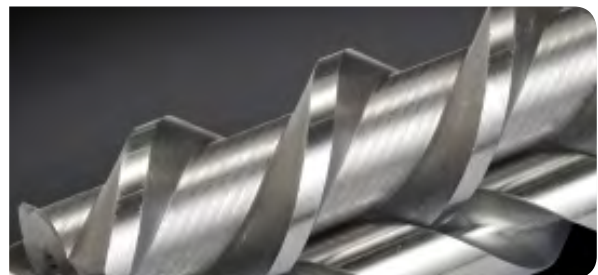
### • Fresh Water Generators



### • Plate Heat Exchangers



### • Low Pressure Pumps



# TOTAL MARINE FORWARDING SERVICE



## Ship's Spare Parts Delivery

- Deliver Ship's Stores, Provision, Spares to Vessels at any port in the world
- Arrangement of Delivery/Services to NB Vessel at Shipyard
- Consolidating all POs + one shipment



## Transit Cargo

- Keep the transit cargo with minimum expenses such as warehouse fees.
- Deliver the transit cargo to all Korean Ports and dispatch other relative countries as your instruction



## Warehousing

- CFS
- Special Cargo Handling
- Bonded Warehousing
- High End Security Capabilities
- Packing, Assembly, Sorting



## Ocean Freight

- FCL, LCL Consolidation Service
- Bulk Cargo & Project Cargo
- Good Relationship with Leading
- First Class Carriers in the world



## Depot

- Depot function of vessel
- Many ship's owners are interested in their depot project in Korea.
- Specialize handling of heavy cargo



# Global Network



13-60, Myeongnyesandan, 3-ro, Jangnan-eup,  
Gijang-gun, Busan, 46028, Rep. of Korea.

**Tel** +82-70-4227-8051

**24/7** +82-10-9353-7992

**Fax** +82-51-980-0682

**E-mail** [dpc@diesel-partners.com](mailto:dpc@diesel-partners.com)

**Website** [www.diesel-partners.com](http://www.diesel-partners.com)

**ShipServ TradeNet** 222752