

GMES will consistently put a great deal of energy
and effort to step forward with you.

GMES



GMES Co., Ltd.

“Our effort is moving our customers”

GMES Co., Ltd. was established in 1994 and has been successfully developed as one of World's leading supplier in this field of ship's spares parts and general stores.

As a leading provider in marine business, we have provided services of spare parts to not only East-Asia (Korea, China, Japan) but also European Area over several decades and already established each agent & branch all over the world.

We will always focus on achieving the very highest levels of customer service and become most wanted company to work with.

Very truly yours,
Mr. Richard Park



Management Philosophy



Mission

We aim to set the highest standards in our industry by providing high quality products, excellent customer service and customized customer solutions.

Vision

We endeavor to be the leading preferred partner in Marine machinery products and re-conditioning service provider in Asia.

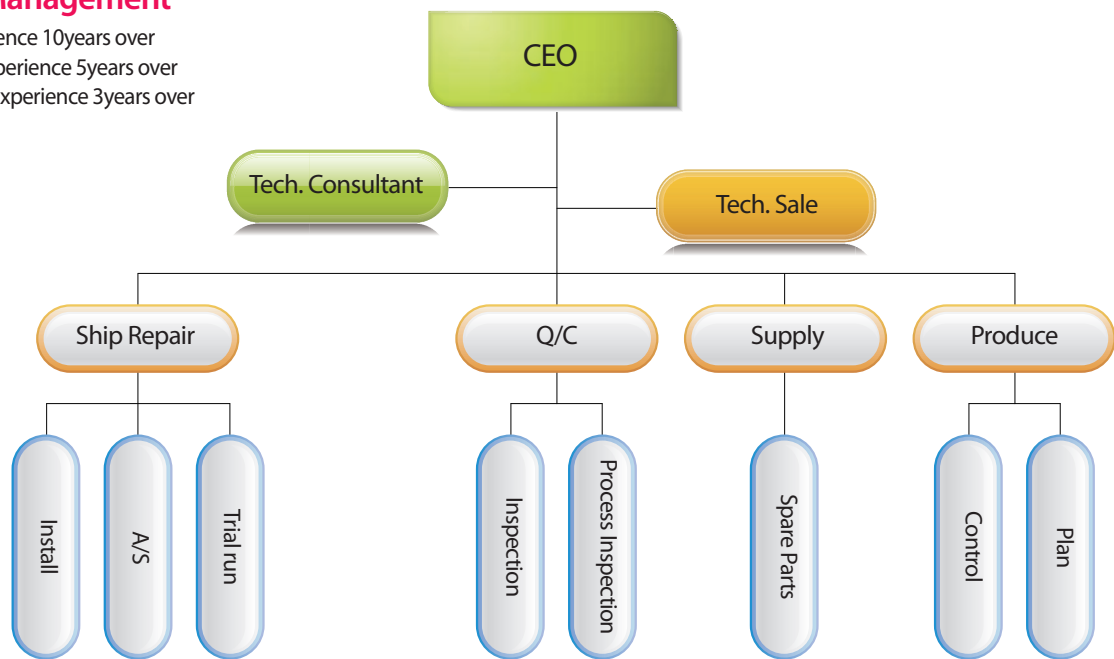
Careers With Us

We are committed to the development of our people because they are our greatest assets.

Organization & Sceneries of Factory

Presonnel Management

- Foreman - Experience 10years over
- Team Leade r- Experience 5years over
- Team member - Experience 3years over



Outside of Factory



Inside of Factory (1)



Inside of Factory (2)



Inside of Factory (3)

1. Main Engine

2-Stroke Performance Systems

GMES Co., Ltd. manufactures superior quality 2-stroke engine performance systems that include valves, seats, housings and drives. Each system component is produced with precision to achieve optimal quality and reliability, even under extreme load conditions



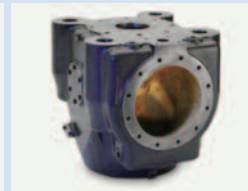
Valve spindles



Valve drive



Valve Guides



Valve housings



Valve seats

4-Stroke Performance Systems

GMES manufactures superior quality 4-stroke engine performance systems. These include valves, seats, springs, guides, valve rotators. Each systems component is designed to excel under the most rigorous load conditions. All components are offered individually or packaged as customized kitting solutions in color-coded, reusable containers.



Valve spindles



Valve springs



Valve cage



Valve guides



Valve rotator turnomat



Valve seats

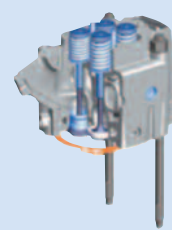
We Manufacture a Full range of Spare parts for the Following types

■ MAN B&W Diesel Two-Stroke Propulsion

- K98MC, K98ME, K98MC-C, K98ME-C
- S90MC-C, S90ME-C, K90MC, K90ME/ME-G1, K90MC-C, K90ME-C
- S80ME, S80MC-C, S80ME-C, K80MC-C, K80ME-C
- S70MC-C, S70ME-C/ME-G1, L70MC-C, L70ME-C
- S60MC-C, S60ME-C/ME-G1, L60MC-C, L60ME-C
- S50MC-C, S50ME-C, S46MC-C, S42MC, L42MC, S35MC, L35MC

■ SULZER Diesel Two-Stroke Propulsion

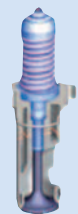
- RT-flex96C, RTA96C, RTA84C, RTA84T-D, RTA72U-B
- RTA68-B, RTA62U-B, RTA58T-B, RTA52U, RTA50, RTA48-TB



Four stroke cylidner head



Two stroke exhaust valve system



Four stroke inlet & exhaust valve cage system



Connecting Rod bolt, Stud Reamer bolt



Cylinder Head, Cylinder Liner, Piston(FCD)



Piston Crown



Piston Crown (1)

2. Generator Engine



Daihatsu 5DK-20E



Daihatsu 6DK-20E



Yanmar Genuine Parts



Yanmar Genuine Parts 1



All Japanese Engine Spare Parts



Cylinder Liner, Piston, Piston Skirt



Crank pin metal, Main Metal, Piston pin bush

We Manufacture a Full range of Spare parts for the Following types

■Yanmar 4 Stroke Auxiliary Engines

With more than 20 years of experience, we have proven to be a service partner for our valued clients in the following areas:

- 4HAL2 / 6HAL2 / 6AYL
- 6GL Series
- 6UL Series
- M200 Series / M220 Series
- MAL Series / ML Series
- 6N18 Series / 6N21 Series / 8N21 Series
- 6N165 Series / S165 Series / S185 Series
- T220 Series / T240 Series / T260 Series
- Z280 Series

■Daihatsu 4 Stroke Auxiliary Engines

- PS Series
- DS Series
- DK Series
- DL Series

■MAN B&W Diesel Four-Stroke

L23/30, L23/30H, 28/32, L28/32H, V28/32H, L27/38, L32/40, V32/40



3. Purifier

Objective of Our Parts

- Perfectly compatible with the original ones.
- Products of high standard of quality
- Built complying with all tolerances through the control of fusion details and material .

We Manufacture a Full range of Spare parts for the Following types

■Alfa-Laval

MAPX Series, MAB Series,
WHPX Series, MOPX Series,
FOPX Series, LOPX Series,
MMPX Series, MFPX Series,
MMB Series

■Westfalia

OSA Series, OSD Series

■Samgong - Mitsubishi

SJ : 700, SJ : 2000, SJ : 3000, SJ : 4000, SJ : 6000,
SJ : 10, SJ : 11, SJ : 15, SJ : 16, SJ : 20, SJ : 25, SJ : 25,
SJ : 30, SJ : 40, SJ : 60, SJ : 70, SJ : 80, SJ : 100



Alfa laval P-separator

Alfa laval MMB

Alfa laval S-sep-bla



Westfalia purifier



Westfalia purifier



Samgong purifier



Purifiers



Locking Washer



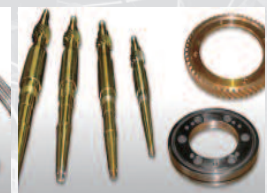
Bowl



Disc



Gravity Disc, Water Chamber & Cover



Vertical Shaft, Spial Gear

4. Air Compressor

We manufacture a full range of spare parts for the following types

■MAKER : Yanmar

- C Series (Water-cooled, Vertical, 2-stage compression)
- SC Series (Water-cooled, Vertical, 2-stage compression)
- KC Series (Air-cooled, Vertical, 2-stage compression)

■MAKER : Tanabe

- H Series ●V Series ●L Series ●Task Series:

■ MAKER : Matsubara

- SCN Series, KSC Series, VKC Series, VC Series, SC Series
- MS Series, MH Series

■Others

- Suction Gas Series
- Hatlapa Series
- Hamworthy Series
- Sperre Series
- Bumhan Series



Water Cooled



Air Cooled



Air Compressors



Water Cooled



Piston & Connecting Rod



Crank Shaft, Filter, Safety Valve, Cooling Water Pump



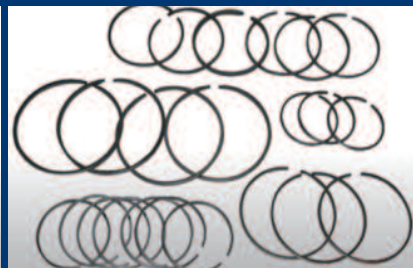
Metal, Piston, Piston Pin Metal, Crank Pin Metal



Suction & Discharge Valve



Head Gasket



Piston Ring

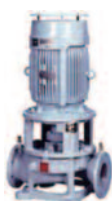
5. Marine Pump

We manufacture a full range of spare parts for the following types

Taiko Kikai	Shinko	Naniwa	Ishii	Heishin	Miura	Teikoku	Shin Shin	China Pump (Made in China)
-------------	--------	--------	-------	---------	-------	---------	-----------	-------------------------------

■PUMP

●AIR COND'COOLING SEA WATER PUMP



Type	Vertical Single-stage, Single-suction Centrifugal Pump
Capacity (m3/h)	30-500
Total head (m)	13-55
Typical Applications	Cooling Water General Service Ballast

●MAIN COOLING SEA WATER PUMP / BALLAST PUMP



Type	Vertical Single-stage, Single-suction Centrifugal Pump
Capacity (m3/h)	30-500
Total head (m)	13-55
Typical Applications	Cooling Water General Service Ballast

●MAIN COOLING SEA WATER PUMP / BALLAST PUMP



Type	Vertical Single-stage, Double-suction Centrifugal Pump
Capacity (m3/h)	300-3000
Total head (m)	13-45
Typical Applications	Cooling Water Ballast Circulating Water

●FIRE & G.S PUMP / BALLAST PUMP



Type	Vertical 2-stage, Single-suction Centrifugal Pump
Capacity (m3/h)	40-500
Total head (m)	20-170
Typical Applications	Fire & General Service Fire, Bilge & Ballast

●FRESH WATER PUMP / SANITARY SEA WATER PUMP => SELF PRIMING PUMP



Type	Horizontal, Self-priming Single-stage, Single-suction Centrifugal Pump
Capacity (m3/h)	2-80
Total head (m)	15-65
Typical Applications	Fresh Water Sanitary Cooling Water

●BOILER FEED WATER PUMP



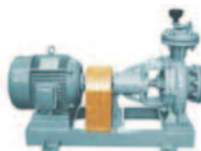
Type	Horizontal 4-stage, Single-suction Centrifugal Pump
Capacity (m3/h)	1-150
Total head (m)	120-350
Typical Applications	Feed Water Water Service

●SEA WATER & FRESH WATER TRANS PUMP



Type	Horizontal mixed flow pump Centrifugal, One stage Close type impeller
Capacity (m3/h)	1500-24000
Total head (m)	10
Typical Applications	DOCKYARD, General water trans pump, For power plant

●SEWAGE TRANSFER PUMP



Type	One stage Horizontal, Centrifugal pump One side open type impeller High Quality Material(sus304, sus316)
Capacity (m3/h)	9-450
Total head (m)	12-30
Typical Applications	Sewage, Sludge, Transfer Pump

●DOUBLE SUCTION VOLUTE PUMP



Type	One stage Centrifugal, Horizontal type Double suction type
Capacity (m3/h)	2-2500
Total head (m)	8-100
Typical Applications	F.O & D.O Transfer pump Boiler circulating pump

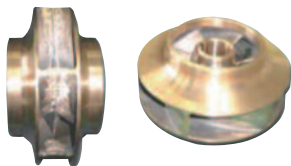
●GEAR PUMP



Type	Horizontal Internal bearing Steam Jacketed Seal Case Rotary Gear Pump
Capacity (m3/h)	1-20
Total head (m)	0.2-2.5(MPa)
Typical Applications	Lubricating Oil H.F.O. Circulating

■PUMP SPARE PARTS

DOBLE SUCTION IMPELLER



- USE: Sea water
- Size: OD 220~540mm

IMPELLER

- USE: Boiler water / Fresh water
- Size: OD 120~220mm



- USE: Sea water / fresh water
- Size: OD 150~380mm

CASING RING



- USE: Sea water / Fresh water
- Size: OD 45~380mm

SHAFT



- USE: Flange shaft, Sea water
- Size: L= 380~580mm
- USE: Sea water pump
- Size: L= 350~15000mm
- USE: Flange shaft / Fresh water
- Size: L=120~330mm

SLEEVE



- USE: Sea water / Flange water pump
- Size: L= 55~350mm

BEARING METAL



- USE: Sea water / Flange water pump
- Size: ID 35~140mm

MECHANICAL SEAL



- USE: Multy purpose
- Size: ID 35~140mm

6. Heat-Exchanger

We Mainly Manufacture Cooler Gasket, Plate(SUS,Titanium) parts for the Following types.

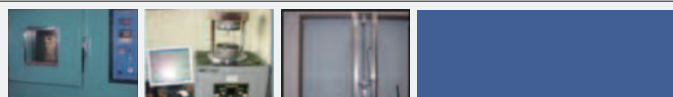
•APV Series •Alfa-Laval Series •SWEP Series •SONDEX Series •GEA Series •LHE Series

■Processing

1. FMB (Final Master Batch) Warehousing



2. Rheometer



3. Extruding



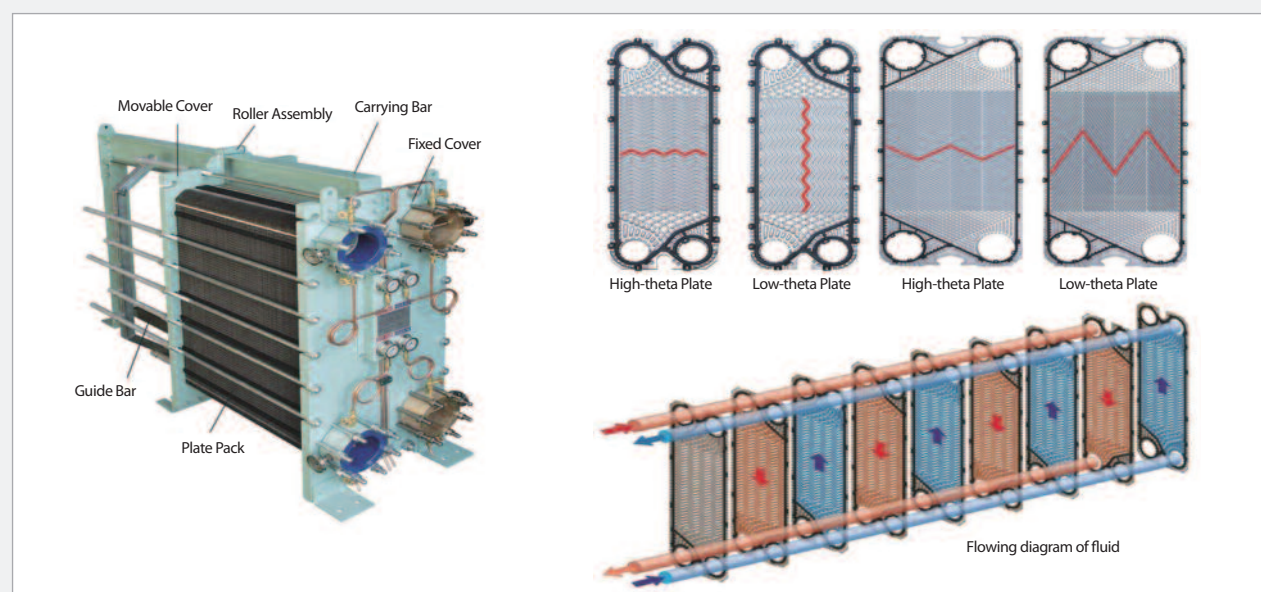
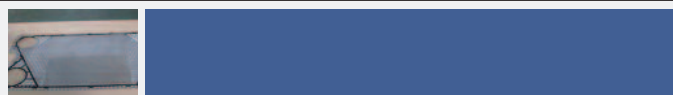
4. 1st Curing In Hot Press



5. 2nd Curing In Oven



6. Gasket Finish



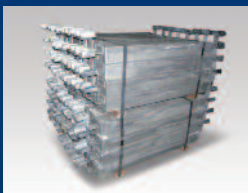
7. Miscellaneous

GMES Co., Ltd. Has Ever Effectively Supplied all Consumable Stores & Provisions to Worldwide Customers as well as Initial Ship Stores Supply to Foreign Shipowners' New Constructing Vessels in Korean & China Shipyard.

■ ISSA & IMPA CODE PRODUCTS

- Cloth & Linen
- Tableware & Galley Utensils
- Rope & Hawser
- Rigging Equipment & General Deck Items
- Marine Paint & Painting Equipment
- Safety Equipment
- Hose & Couplings
- Nautical Equipment
- Petroleum Products
- Stationery and Hardware
- Brushed & Mats, Lavatory Equipment
- Cleaning Material & Chemicals
- Pneumatic, Electrical Tools & Hand Tools
- Cutting & Measuring Tools
- Metal Sheets, Bars, Screw & Nuts, Pipes & Tubes & Fittings
- Valves & Cocks, Bearings and Electrical Equipment
- Packing & Jointing, Welding Equipment & Machinery
- Welfare Items

- Anchor & Anchor Chain
- Zinc & Aluminium Anodes



Anode 1



Anode 2



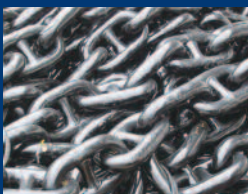
Anode 3



Anode 4



Anode 5



Anchor Chain



Ball Valve (Screw Type)



Ball Valve (Flange Type)



Elbow, Tee, Union, Reducer



Butterfly Valve, Fire Valve, Angle Valve

8. Reconditioning Service

Recondition of Fuel Equipment



Full Equipped Fuel Injection Facility



We Repair All Fuel Injection Equipment

■ Fuel Injection Division (Over 20 Years' Experience)

- With more than 20 years of experience, we have proven to be a service partner for our valued clients in the following areas:
- Service of fuel systems of all 2 and 4 Stroke Engine Systems
- Reconditioning of Fuel Pumps (Single / Inline)
- Reconditioning of Plungers and Barrels
- Reconditioning of Fuel Valves and Injectors



One Stop Service Package



One Stop Fuel Injection Service Centre

■ Engine Fuel Systems That We Service

- Yanmar, Daihatsu, Niigata, Akasaka, Hanshin Diesel, MAK, MAN B&W

Reconditioning of Engine Spare Parts

Through our experienced technical team, we also repair and extend your Engine Spare-Parts for the following:

- Cylinder Head Assembly
- Cylinder Liner
- Connecting Rod
- Governor

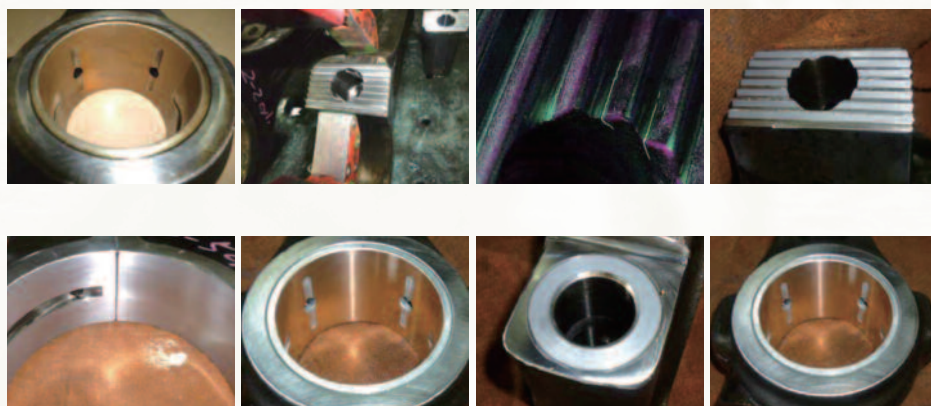
Example 1

Inspection and Reconditioning of Cylinder Head Assembly Our One Stop Service Package for Cylinder Head includes the following:



Example 2

Inspection and Reconditioning of Connecting Rod



Reconditioning of Vessel

•Hull Repair •Engine Room Repair •Hydraulic Equipment Repair •Electric Repair •Utility Room Repair

9. List of Made Machinery

- Allweiler Pump - Pump & Pumping system
- Aqua Metro - Flow Meter Control System
- Aquamar - Sewage treatment system
- Blohm+Voss - Oily Water Separator
- Bum Han Industries - Main Air Compressor
- DaeYang Electric - Lighting Fixture, Rador & Radio Equipment
- Danfoss Marine System - Valve Remote, Control Systems
- DongHwa Entec - Heat Exchanger, Fresh Water Generator
- Evac - Toilet Systems
- Finecom - Gas Detection
- Gea Westfalia - Separator
- GeoRim Engineering - Oil Bilge Separator
- Haean Machinery - Hose Crane Handling
- Hatlapa - Steering Gear
- Heishin pump works - Marine Pumps
- IL SEUNG - Fresh Water Generator, Sewage Treatment System
- J.P.Sauer & Sohn - Air Compressor
- Jets - Vacuum Toilet system
- Kocaco - Grinding Machine
- Miura Boiler - Steam Boilers, Hot Water Boilers
- Naniwa - Pump & Pumping system
- Saracom - Navigation & Communication Equipments
- Seaplus - Fire Monitor, Water Mist Nozzle & Gun
- ShinShin Machinery - Pump & Pumping System
- Sperre Industri A/S - Compressor
- Taiko Kikai - Marine Pumps, Bilge Separator, Sewage Treatment Device
- Tanabe - Marine Compressor
- TTS Marine - Hatch Covers, Electric Winches
- Volcano - Boilers
- Fuji Electronic - Electronic Components
- 380J-3 Engine Series
- BUKH Engine Series



GMES Co., Ltd.

Tel : 82-(0)51-465-1386

Fax : 82-(0)51-468-1386

E-Mail(Sales Team) : supply@gmes.kr

E-mail(Technical Team) : technical@gmes.kr

Skype : miraenc

C.Phone : 82-(0)10-4545-4243

Website : www.gmes.kr

Room304, Han-Chang B/D, 7, Jungang-daero 180 beon-gil,
Dong-gu, Busan, Korea.

