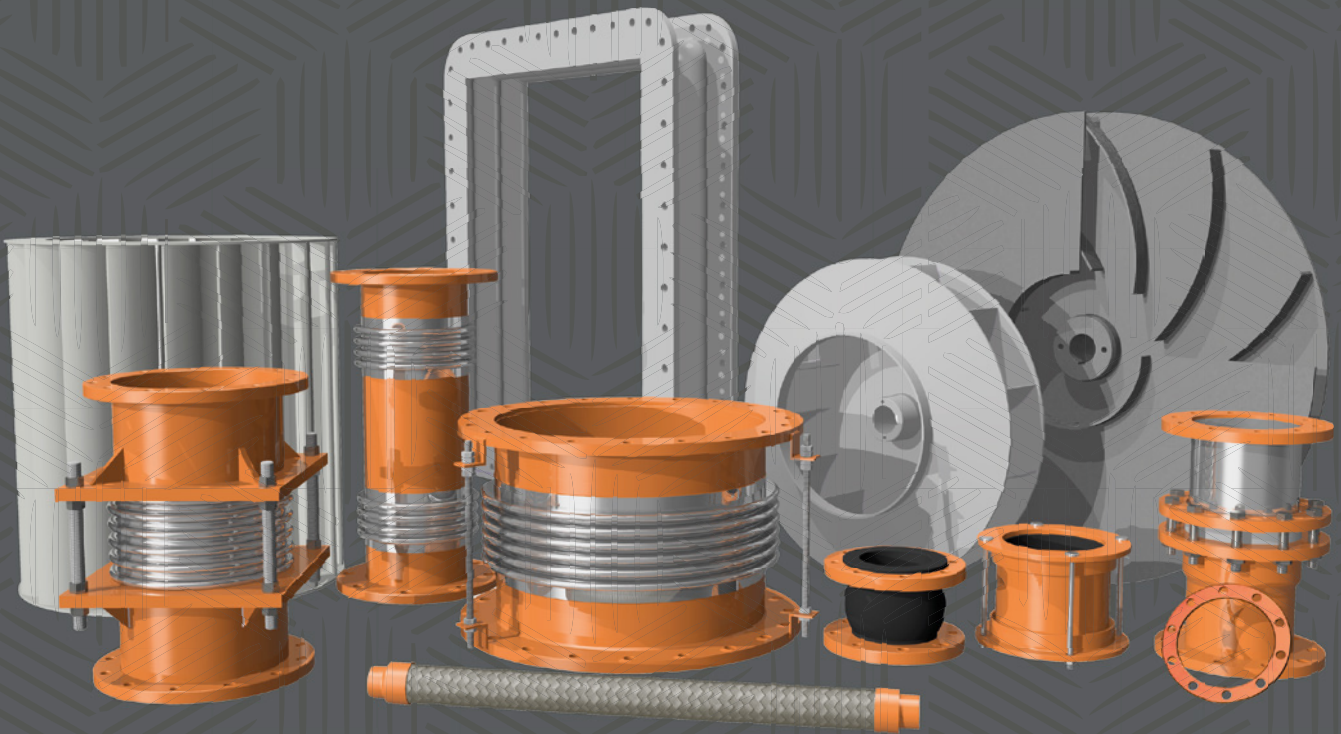


BELLOWS HELLAS

EXPANSION JOINTS - FAN IMPELLERS



MARINE & INDUSTRIAL SPARE PARTS MANUFACTURER

Expansion Joints • Impellers • Blowers • Fans • Flexible Metal Hoses
Exhaust Gas Manifolds • Sea Chests • Filter Elements
Flanges • Gaskets • Thermal Insulating Jackets



Company Profile

BELLOWS HELLAS O.E. primarily specialises in a wide range of Expansion Joints and Fan Impellers with an accumulated experience of 20 years.

We are able to offer custom solutions for the whole range of our products while maintaining top quality and short delivery times.

All products are manufactured in our premises by specialised and experienced personnel based on detailed engineering drawings created by our design engineers to ensure optimum results.

Single Gas Exhaust Expansion Joints (a)

Multiply Expansion Joints which consist of 3 sheets of metal with thickness of 0.3mm or 0.6mm depending on the size of the Joint.

Material:

SUS-321L

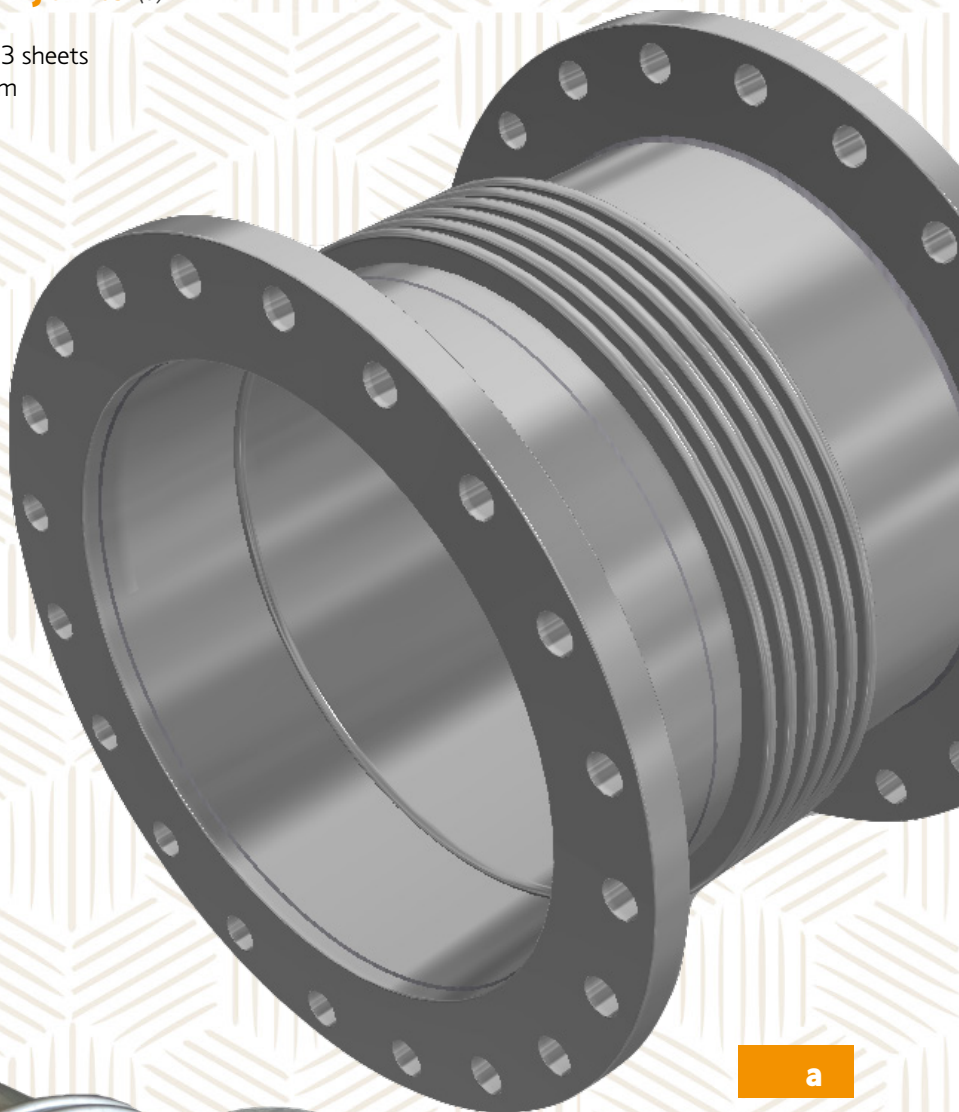
Available Size Range:

DN50A - DN3000A.

Flange Type:

Standard or Custom Made

– Fixed or Rotating.

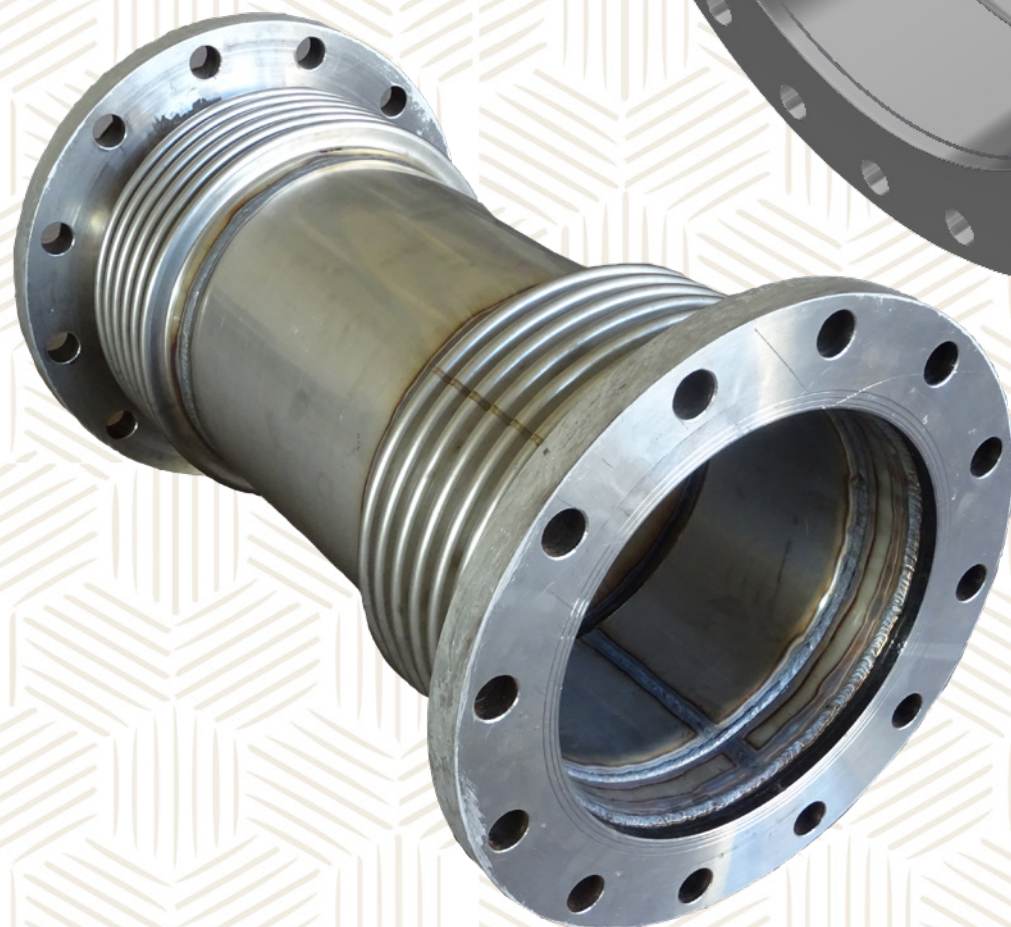


a

b

Universal Expansion Joints (b)

Exhaust Expansion Joints can be manufactured incorporating one more bellow in the design for cases that the load exceeds the capacity of a single bellow.



Steam Expansion Joints (c)

Expansion Joints for high working pressures which consist of 4 to 6 metal sheets with thickness of 0.4mm or 0.6mm depending on the size of the joint and the required working pressure.

Working Pressure:

Up to 20 BAR

Material:

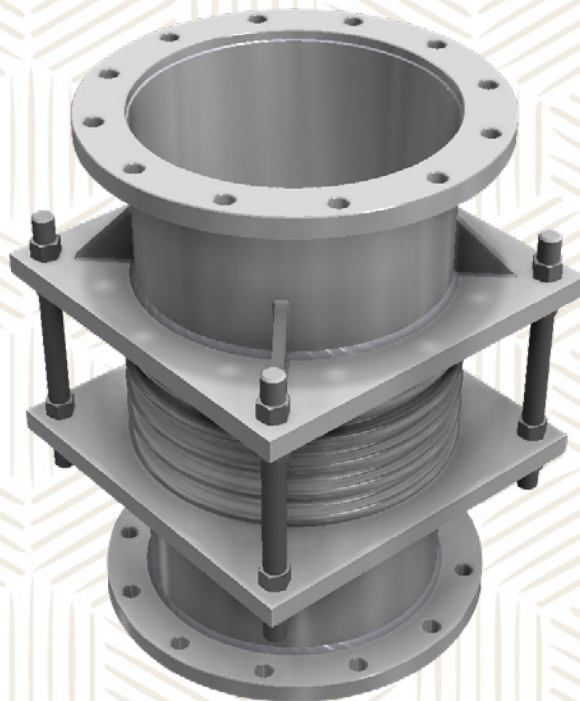
SUS-316L

Available Size Range:

DN65A - DN400A.

Flange Type:

Standard or Custom Made – Fixed or Rotating.



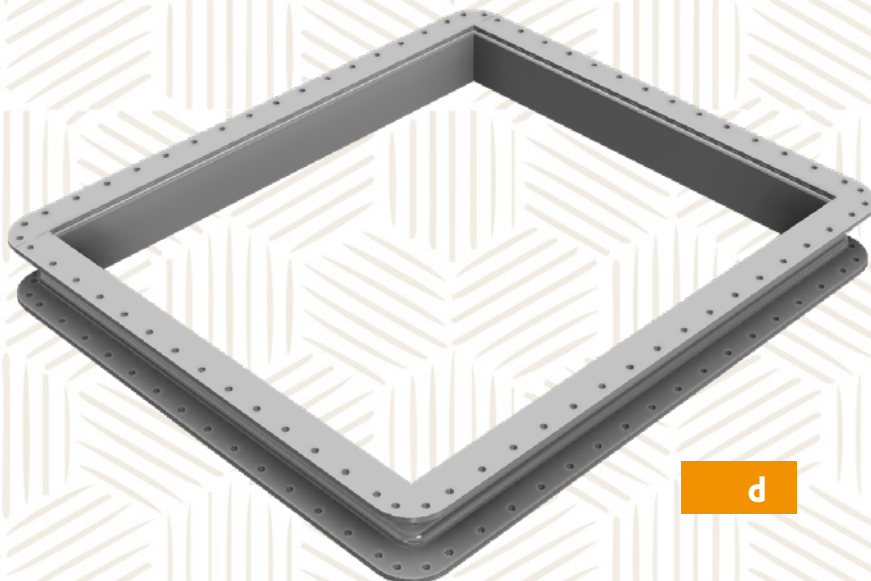
c

Rectangular Expansion joints (d)

Rectangular Expansion Joints consist of 1 sheet of metal with thickness from 1.5mm to 2mm with various material choices available depending on the application of the joint.

Flange Type:

Custom Made – Fixed.



d

Sleeve Type Expansion Joints (e)

Expansion Joints for steam lines which are primarily used in deck lines.

Body & Gland Material:

Galvanised or Epoxy Painted ST-37.2.

Sleeve Material:

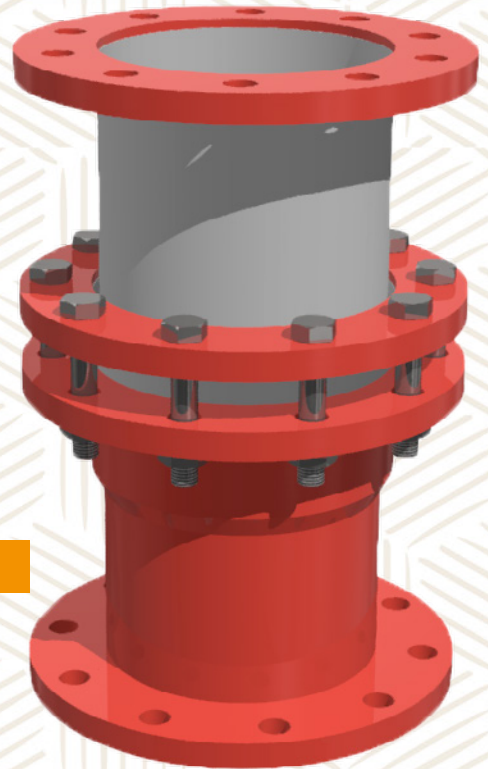
Stainless Steel.

Available Size Range:

DN65A – DN300A.

Flange Type:

Standard or Custom Made – Fixed.



Dresser Type Expansion Joints (f)

An Expansion Joint type primarily used in cargo deck lines.

Material:

Galvanised or Epoxy Painted Steel.

Available Size Range:

DN65A-DN750A

Dresser Rubber Packing (g)

The rubber O rings which are responsible for accommodating the axial displacement in Dresser Type Expansion Joints are available individually from DN65A-DN750A.



Rubber Expansion Joints (h)

Rubber Expansion Joints can accommodate movements in all 3 directions as well as torsional movement. They have large movement capacity, a compact design and no gaskets are required for their installation. They can be used for a wide range of applications since they are corrosion and erosion resistant.

Body Material:

NBR

Available Size Range:

DN32A - DN500A.

Flange Type:

Standard or Custom Made – Rotating.



h

Siliconized Expansion Joints (i)

Thermo-E-glass Fabric with red silicone coating and Kevlar threads capable of withstanding temperatures up to 550°C mainly used in the ship air ducts. They can be manufactured at any size requested by the customer.



i

I.G.S. Fan Impellers (a)

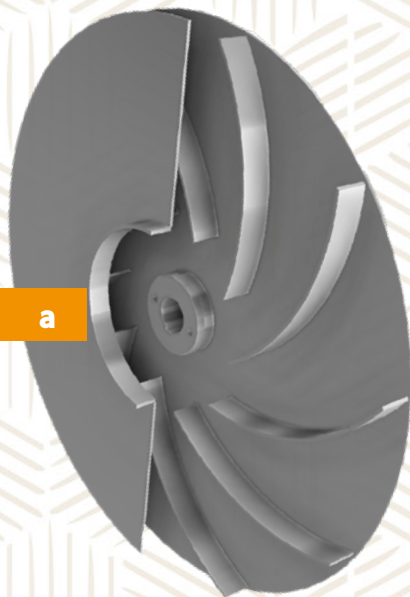
We specialise in the manufacturing of various Impeller types in various dimensions and metal thicknesses.

Direction of Rotation:

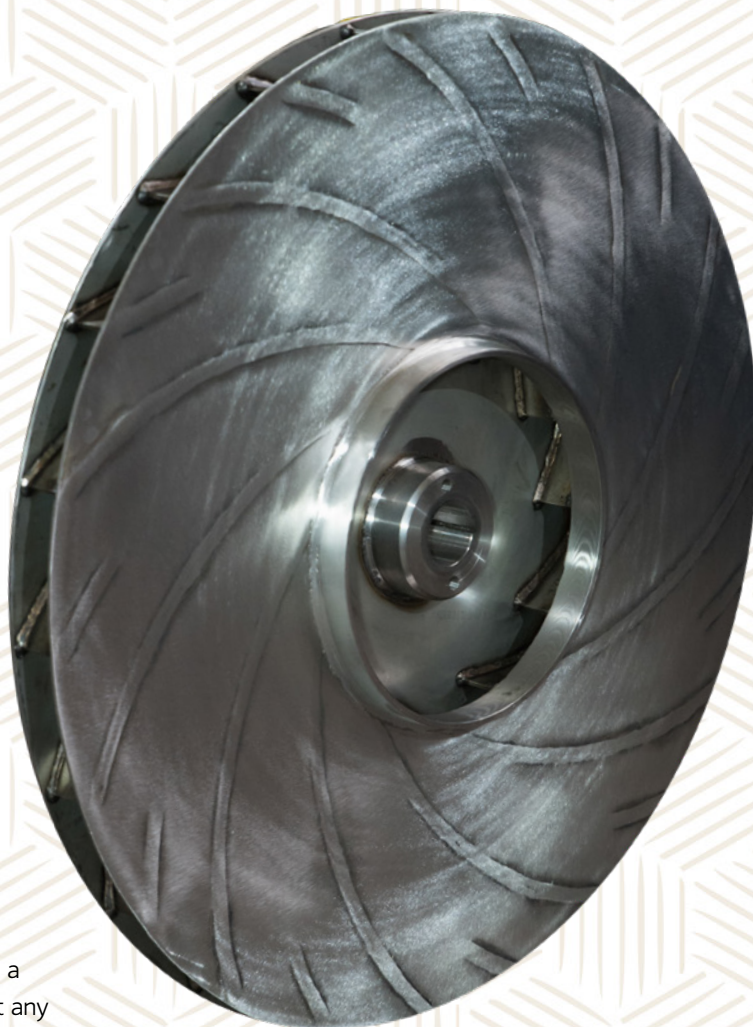
Clockwise or Anticlockwise.

Material:

Stainless Steel



a



Centrifugal Blowers (b)

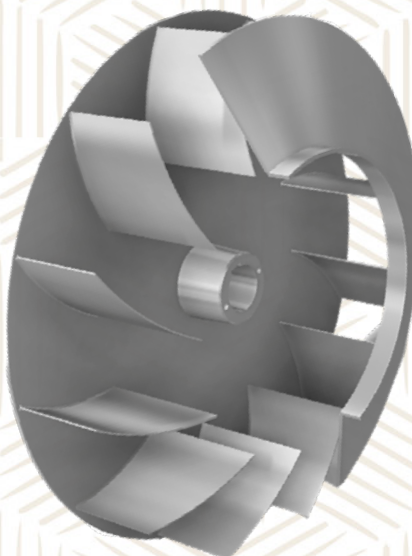
The blower is one of the most widely used fans across a number of industrial fields and can be manufactured at any size requested by the customer.

Material:

Steel, Stainless Steel and Aluminium



b



Sirocco Type Blowers (c)

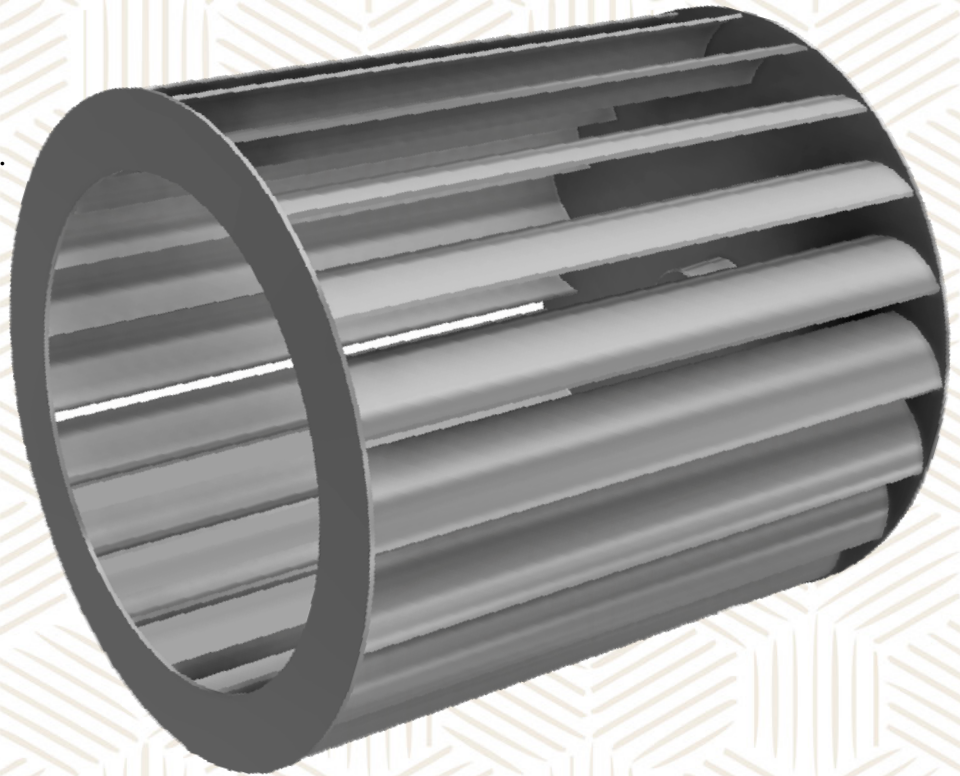
A special type of Centrifugal Blower with forward curved and narrow blades primarily used for air-conditioning applications.

Inlet:

Single or Double.

Direction of Rotation:

Clockwise or Anticlockwise.



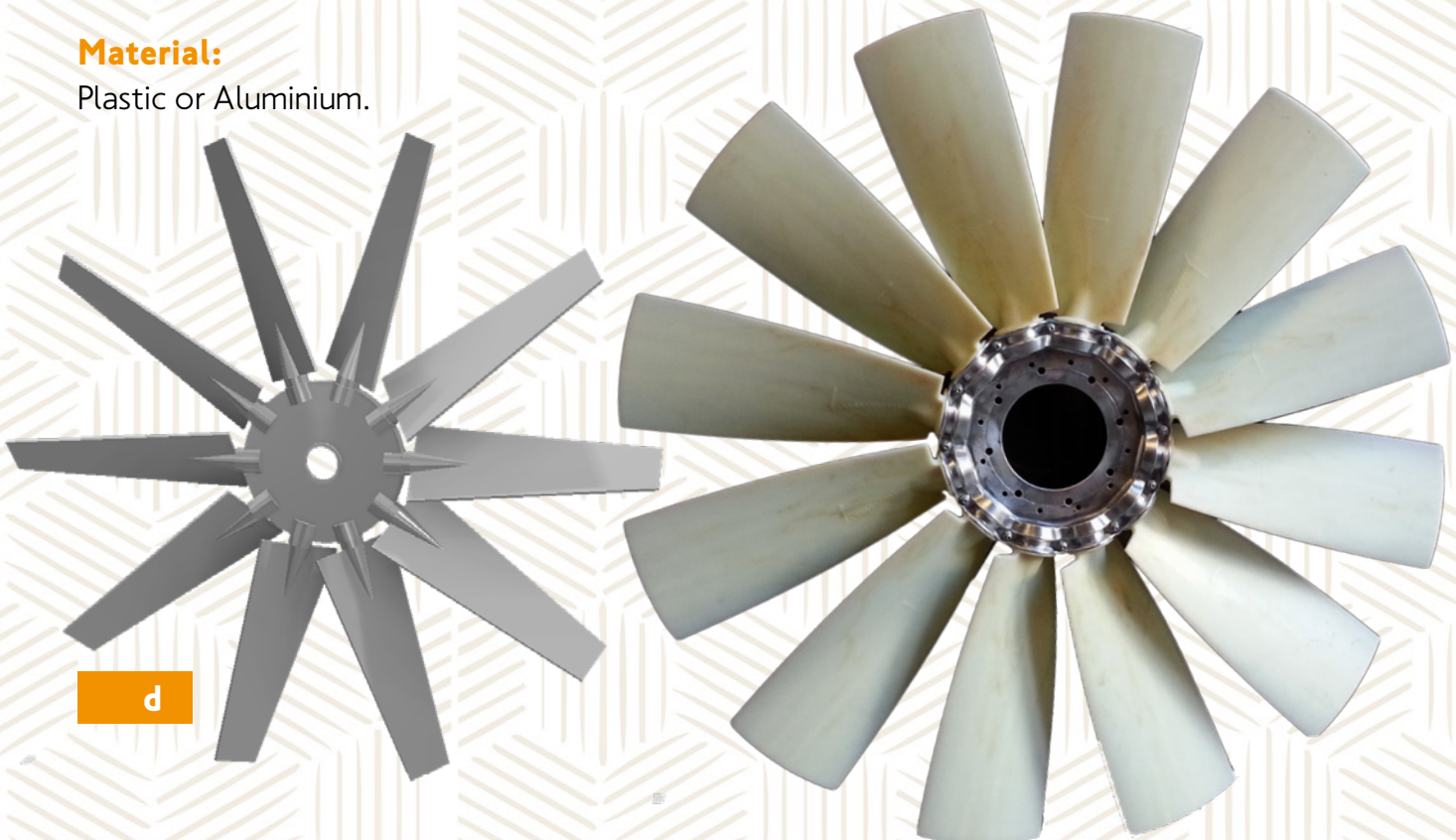
c

Ventilation Axial Fans (d)

Axial Fans are used primarily for moving air through a piping system and can be manufactured at various sizes depending on the needs of the customer. The number of blades and their angle is calculated based on the required capacity of the fan.

Material:

Plastic or Aluminium.



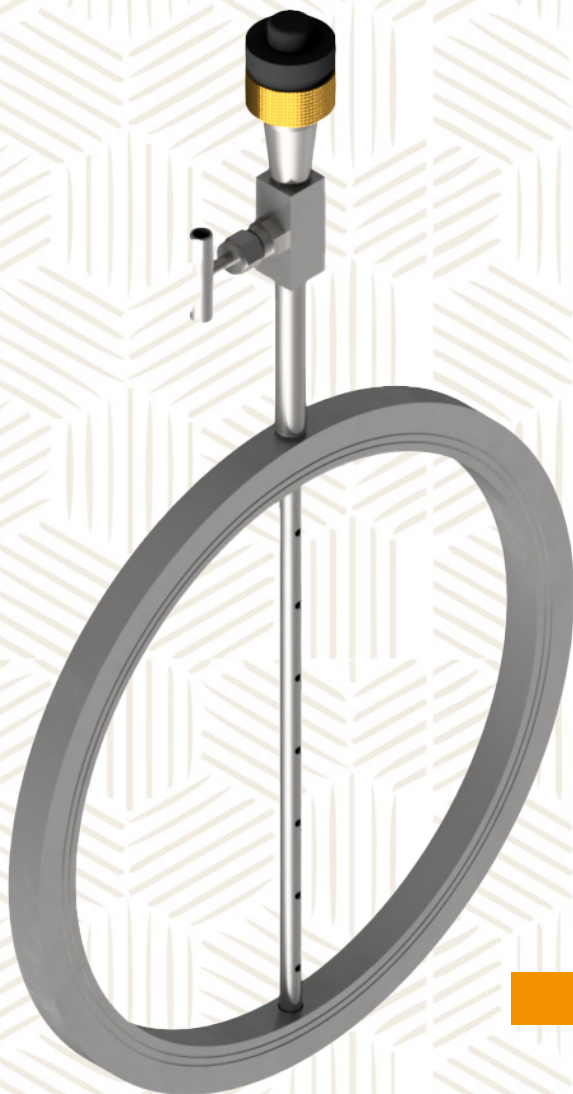
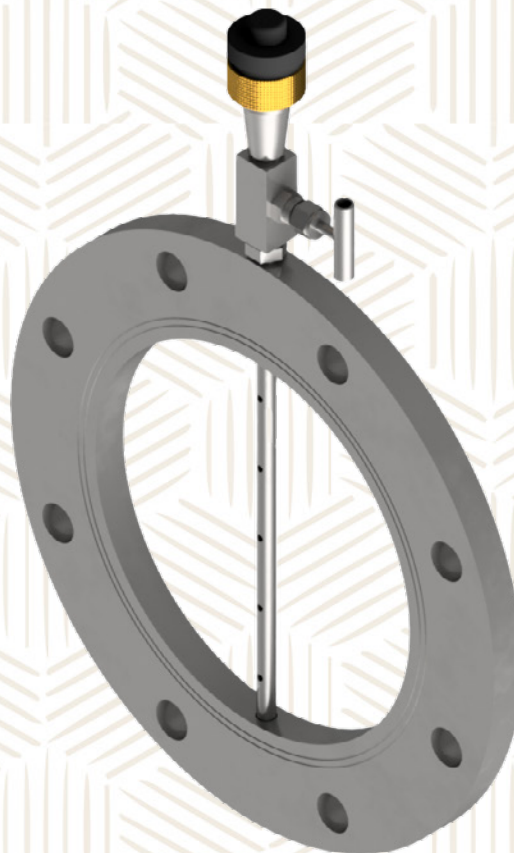
d

Drip Type Bunker Sampler Flanges

Drip Type Bunker Sampler Flanges are one of the most common and economic methods of obtaining samples. Our bunker samplers are type approved by Bureau Veritas, they are manufactured under strict ISO 9001 quality assurance standards and are also compliant with IMO MARPOL 73/78 Annex VI. They are easy to install as there is no need for external equipment and are available in two designs.

a

Full Face Type Design



b

Ring Type Design

Page 1 / 4



Marine & Offshore

Certificate number: 07531AD/BV

File number:

Product code: 012011

This certificate is not valid when presented without the full attached certificate composed of 7 sections

www.veristar.com

TYPE APPROVAL CERTIFICATE

This certificate is issued to
BELLOWS HELLAS O.E.
PROSALUS - GREECE

for the type of product
SAMPLING DEVICES
Bunker Sampler

Requirements:

- Bureau Veritas Rules for the Classification of Steel Ships
- MARPOL 73/78 as amended, revised Annex VI, Regulation 19(B)
- IMO Resolution MEPC.96(47) amended by MEPC.182(59)

This certificate is issued to attest that Bureau Veritas Marine & Offshore did undertake the relevant approval procedures for the product identified above which was found to comply with the relevant requirements mentioned above.

This certificate will expire on: 16 Dec 2026

For Bureau Veritas Marine & Offshore,
At BV PROSALUS, on 16 Dec 2021,
Soyou KONTOLAKIS



This certificate remains valid until the date stated above, unless cancelled or revised, provided the conditions indicated in the subsequent paragraph(s) are complied with and the product remains satisfactory in service. This certificate will not be valid if the applicant makes any changes or modifications to the approved product(s) which have not been notified to, and subject to entry with Bureau Veritas Marine & Offshore. Should the applicant register or otherwise be approved during the validity of this certificate, the product(s) have to be approved prior to being placed on board vessels to which the approved regulations or standards apply. This certificate is issued under the name of the General Conditions of Bureau Veritas Marine & Offshore available on the internet site www.veristar.com. Any person not a party to the contract pursuant to which this document is delivered may not assert a claim against Bureau Veritas Marine & Offshore for any liability arising out of errors or omissions which may be contained in said document, or for errors of judgement, fault or negligence committed by personnel of the issuing or of the signatory in establishment or issuance of this document, and in connection with any activities for which it may provide.

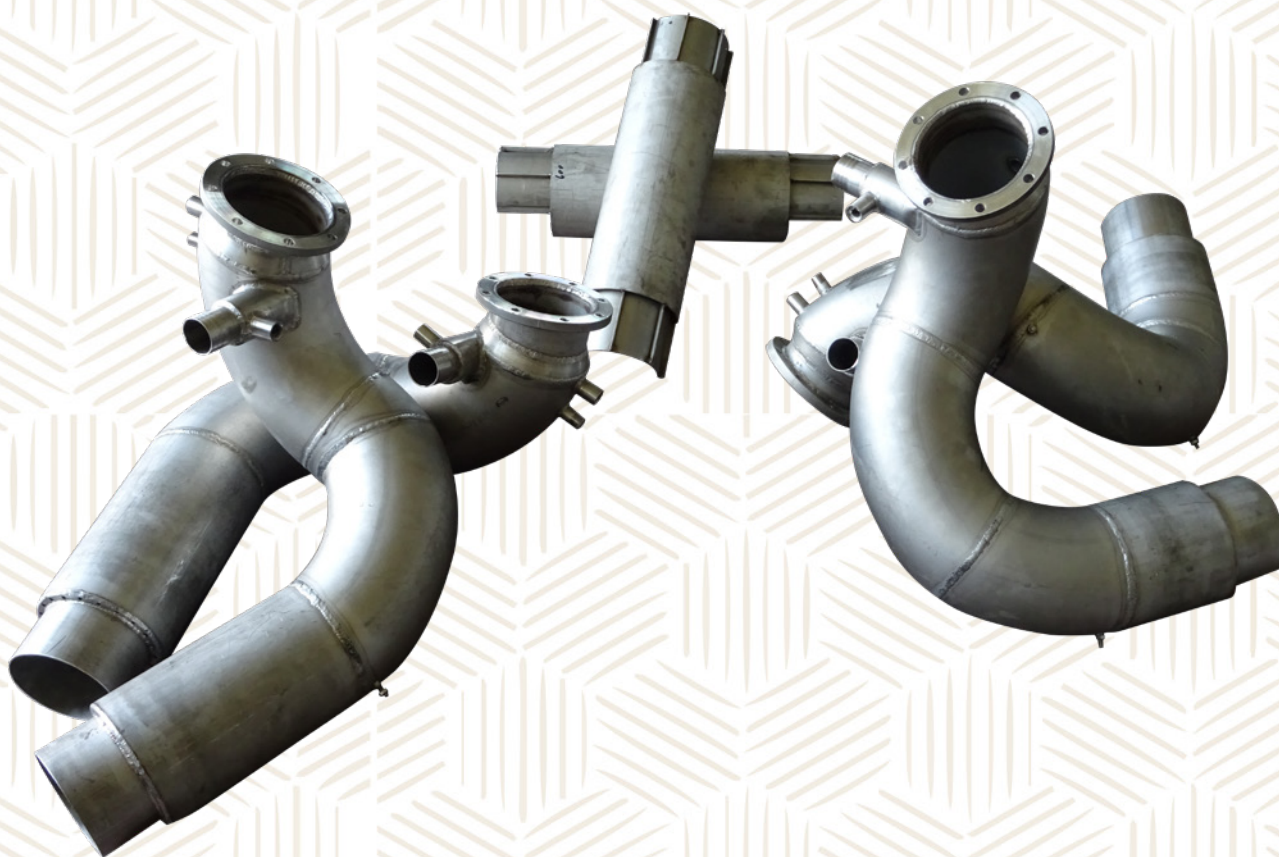
The electronic version is available at: <http://www.veristar.com/veristar/bv/veristarPublicHTT/types/p/h/30302021>
BV Mod. A4/E 530 June 2017 This certificate consists of 4 page(s)

Stainless Steel Units which collect the engine exhaust gas. They can be made in various sizes and shapes. They are divided into two categories:



a) The plain gas exhaust manifolds which are single walled and only direct the exhaust gases to the outlet at the same temperature as they exit the engine.

b) The cooled exhaust gas manifolds which are double walled and the exhaust gas circulates within the inner section and is cooled by the water circulating within the outer section of the manifold.





Flexible Metal Hoses

Corrugated flexible stainless steel metal pipe reinforced with braided stainless steel on the outside. They can be used in extreme conditions as they are corrosion resistant while maintaining their pressure tightness.

Material:

SUS-316L or SUS-321

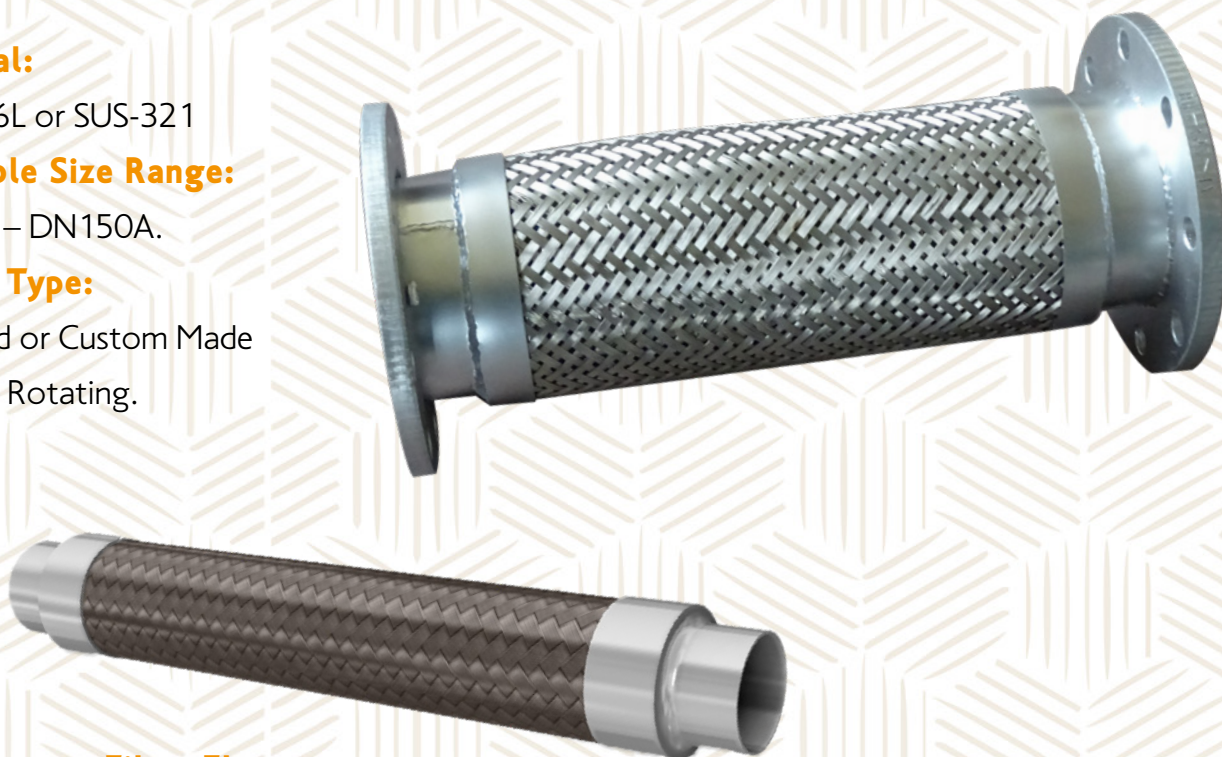
Available Size Range:

DN15A – DN150A.

Flange Type:

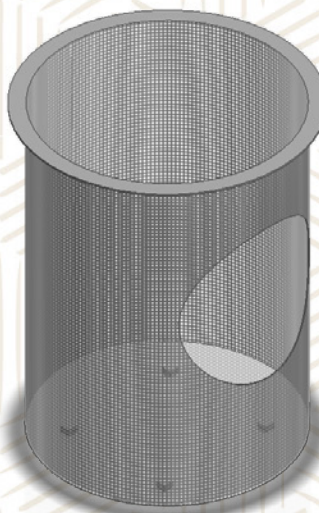
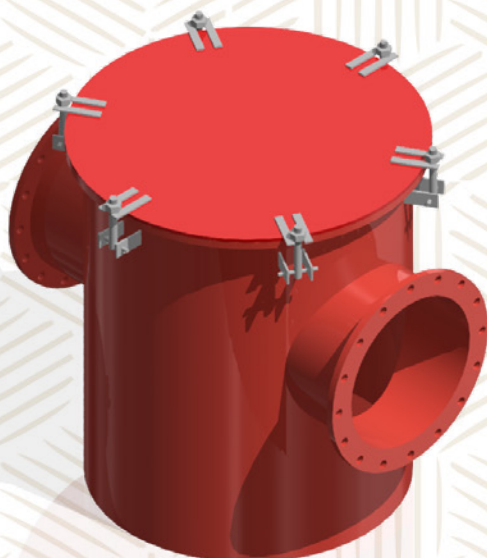
Standard or Custom Made

Fixed or Rotating.



Sea Chests – Filter Elements

Sea Chests are physical barriers used to withhold impurities found in the sea water being pumped for the cooling of the ship engines. Filter Elements act as casing for the sea chests and they have an inlet and outlet which can either be linear or at an angle. They can be manufactured at any shape and size requested by the customer.

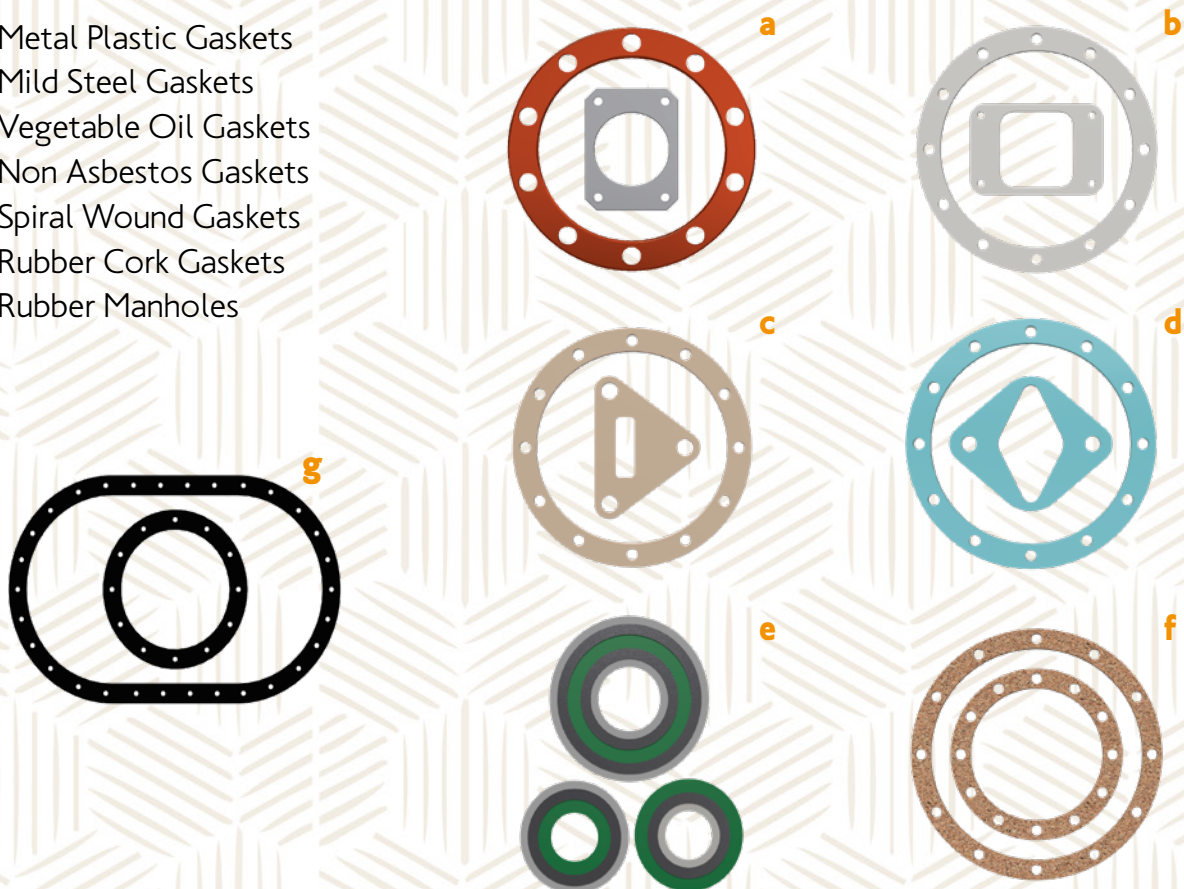




Gaskets

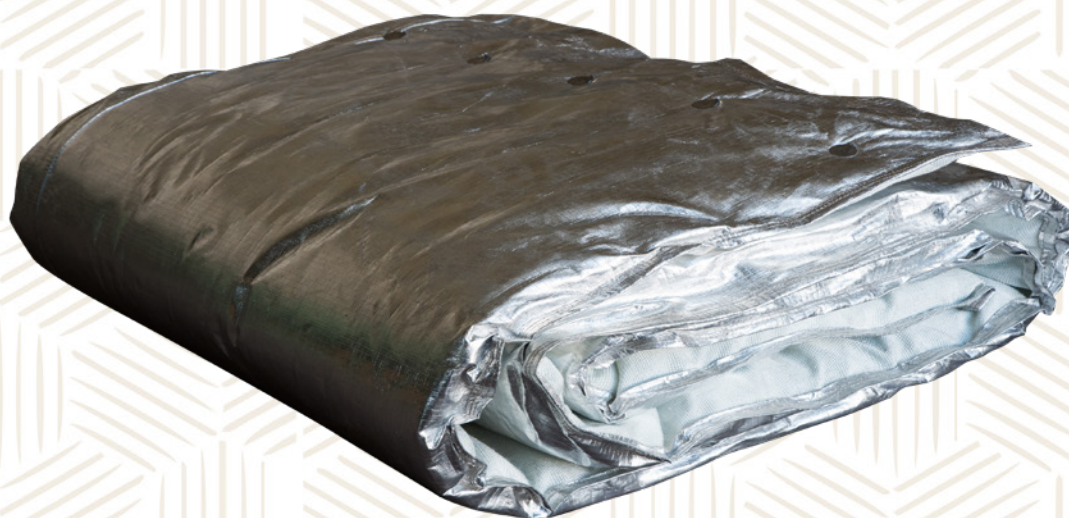
They are one of the simplest sealing components and they can also fill any irregularities on the two mating surfaces. We provide a number of different Gasket types which can be manufactured at any shape and size to meet the needs of the customer.

- a.** Metal Plastic Gaskets
- b.** Mild Steel Gaskets
- c.** Vegetable Oil Gaskets
- d.** Non Asbestos Gaskets
- e.** Spiral Wound Gaskets
- f.** Rubber Cork Gaskets
- g.** Rubber Manholes



Thermal Insulating Jackets

Used for insulating the piping and the Expansion Joints in the ship's engine room. They are separated into three layers with the inner being plain fiberglass, the intermediate layer ceramic wool and the outer one fiberglass coated with silicone or aluminium.





Where top quality meets consistency

BELLOWS HELLAS O.E.

Marine & Industrial Spare Parts Manufacturer

- 📍 27 Aigaleo & Salaminos Str., 18545, Piraeus, Greece
- ☎ +30 210 411 6647, +30 2104134155
- 📠 +30 2104116634
- ✉ info@bellowshellas.com, sales@bellowshellas.com
- 🌐 www.bellowshellas.com
- in www.linkedin.com/in/Bellows-Hellas

