



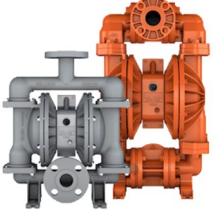
VOIGT-ABERNATHY

www.voigt.com

TradeNet ID: 254063

INDUSTRIAL PUMPS & PROCESS EQUIPMENT

WILDEN
a Dover company



- Air Operated Double Diaphragm Pumps & Parts.
- Pro-Flo & Pro-Flo Shift Air Valve, all Legacy Products and Parts
- Authorized WILDEN Service Center



- Mechanical Seals & Seal Support Systems
- Cartridge Type, Seal Support Systems, All Configurations

Ampco Pumps



- Sanitary Centrifugal Pumps
- Positive Displacement Pumps
- Pump Remanufacturing Program on Waukesha Universal I & II



Badger Meter



- Industrial Flow Meters-Mag, Coriolis Mass, Turbine, Disc & Gear Meters

BASETEK
LLC

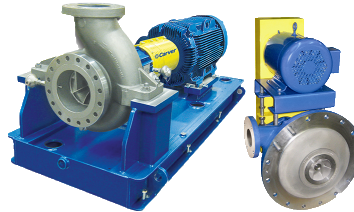


- Polymer Concrete Baseplates- Corrosion Resistant & 0.001" Flat



- Sliding Vane Pumps & Screw Pumps
- SYSTEM ONE Extreme-Duty ANSI Pumps
- Reciprocating Compressors
- Mouvox Eccentric Disc Pumps

Carver



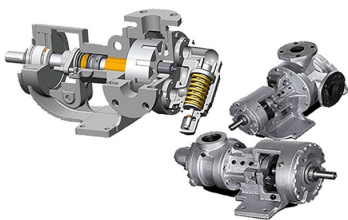
- Multi-Stage Ring Pumps
- API-610 End Suction Pumps
- Vertical Sump KROGH Pumps
- Low NPSH & Slurry Pumps

EATON FILTRATION



- Hayward Strainers: Duplex, Simplex, Automatic, Y-Strainer
- Tubular Backwashing Filters
- DCF Automatic Filters
- Bag Filters

EnviroGear
PUMPS



- G-SERIES Internal Gear Pumps & E-Series Seal-Less Mag Drive Gear Pumps/ Drop in for Most Viking Universal Series

FTI FINISH THOMPSON INC.



- UC Series ANSI Heavy-Duty
- ETFE Lined Magnetic Drive Pumps up to 1200 gpm
- Full Line Heavy-Duty Non-Metallic Pumps, Drum Pumps & Small Metal Pumps

BALDOR
A MEMBER OF THE ABB GROUP
BALDOR • DODGE



- Full Line of Electric Motors & Drives for Industry
- Dodge Power Transmission Products-Full Line

GRISWOLD



- Full Line ANSI Standard Pumps
- Directly Interchangeable with Gould's Model 3196

GRUNDFOS



- CR Series Multi-Stage In-Line Pumps- Industry Leader
- Chemical Metering & Dosing Pumps-Full line Metering Pump, Controls, & Skids

Hydrotal



- Screw Type Centrifugal Pumps
- Immersible Pumps
- Engineered Wastewater Pumps

WANNER
Hydra-Cell
Seal-less Pump Technology



- High Pressure Seal-less Diaphragm Pumps for Flows to 200 gpm & Pressures to 5000 psig
- VECTOR Peristaltic Hose Pumps

KamThermal



- TEMA Shell & Tube Heat Exchangers
- Carbon Steel, Stainless Steel & Nickel Alloys
- Custom Fabricated Units
- CAE In-House Thermal Design

INDUSTRIAL PUMPS & PROCESS EQUIPMENT



- 99.7% Efficient Direct-Fired Water Heaters
- Wastewater Treatment Systems



- Electronic & Motorized Diaphragm Metering Pumps for Chemical Feed to 300 gph



- Heavy-Duty Vertical Turbine Pumps- All Configurations & Metallurgies
- Submersible Turbine Pumps



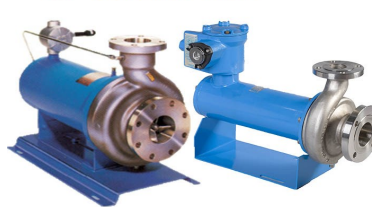
- Steam Injection Heaters for Liquids & Slurries / In-line & Tank Mount



- ECO Precision Alloy Gear Pumps for Metering & Transfer-1/2 to 60 gpm
- Isochem Magnetic Drive Gear Pumps for Leakproof Pumping-0.1 to 60 gpm



- Liquid Ring Vacuum Pumps, Compressors & Packaged Systems
- Drop-in Replacement for Most Nash
- Service & Repair



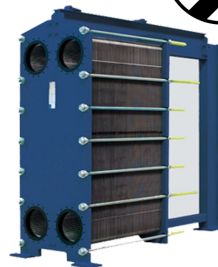
- Teikoku & Chempump Leakproof Canned Motor Pumps-World's Largest Mfr. ANSI Dimensional, API 685 Compliant, High Temperature & Any Specials to 500 HP



- Industrial Submersible Pumps-Solids Handling, Wastewater, Chopper, Controls
- Heavy-Duty Portable Dewatering Pumps-for Mining, Industry & Construction



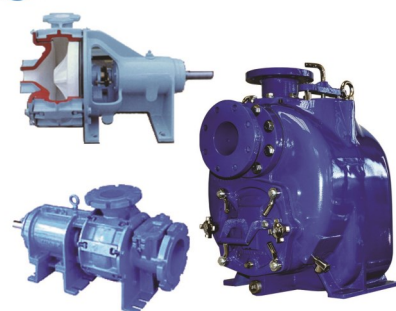
- Complete Range of Industrial Heavy-Duty Peristaltic Pumps
- Flows from 0-350 gpm, Pressure to 230 psi



- Full Line of Plate & Frame Heat Exchangers for Industry



- ROTO-JET Single-Stage High-Pressure Centrifugal Pumps to 600 gpm / 2250 psig



- Wemco WNC Non-Clog Pumps through 12" Size-Trailer Pkgs & Dry Prime
- Wemco Torque Flow-Recessed Impeller High Chrome Vortex Pumps
- Wemco WSP-Self-Priming Trash Pumps & Wastewater Pumps to 10" Size
- Wemco Chop Flow-Heavy Solids Handling Non-Clog Chopper Pumps for Extreme Solids

Florida Service Center

230 Sunport Lane, Suite 350
Orlando, FL 32809
Phone: 407.377.4293
Fax: 407.386.6657



Corporate Office
Birmingham, AL

www.voigt.com