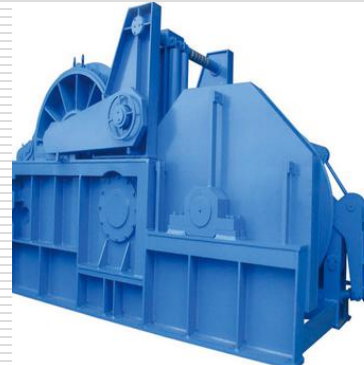




Company Profile



秦 皇 岛 海 熙 机 械 设 备 有 限 公 司
**Qinhuangdao Haixi
Machinery Equipment Co., Ltd.**

Introduction

- ❑ HXME, is one of professional marine equipment& parts supplier in China, offering equipments and spare parts to shipyards, shipowners, shipmanage companys.
- ❑ Main business:
 - ◆ New ship building equipments supply
 - ◆ Marine Diesel& equipments spare supply

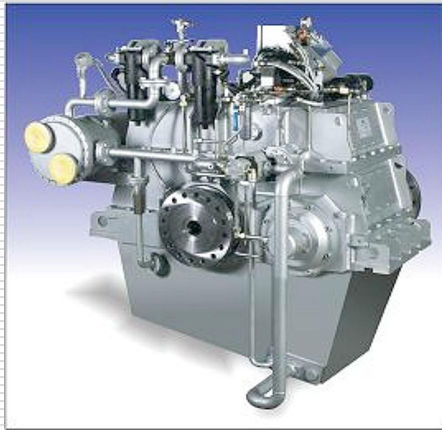
Marine Equipment

□ Propulsion system

Diesel engine

Gear box

Propeller.



Marine Equipment

□ Deck machinery

Anchor&Windlass

Crane

Towing winch



Marine Equipment

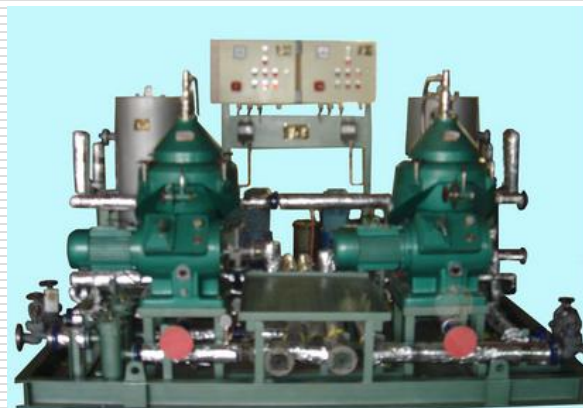
□ Auxiliary equipment

Boiler

Oil purifier system

Air compressor

Pump



Marine Equipment

□ Marine Electrical equipment

Switchboard

Control system

Cable/Marine Lamp



Diesel Spare Parts

Main Engine Type

MAN B&W	L21/31, L23/30A, L28/32A(VF), L32/40, L40/45, 52/55A, S26MC, L/S35MC, L/S42MC, S46MC-C, L/S50MC-C, L/S60MC-C, L/S70MC-C, L/S80MC, K90MC, K98MC-C, S35ME-B, S40ME-B, S46ME-B, S50ME-C(B), LS60ME-C, L/S70ME-C, K/S80ME-C, S90ME-C, K98ME-C
MITSUBISHI	UEC37/88H, UEC45/115H, UEC45HA, UEC52HA, UEC37LA, UEC45LA, UEC52LA, UEC33LSII, UEC37LSII, UEC43LSII, UEC50LSII, UEC60LSII, UET39/65C, UET45/75C, UET45/8D
AKASAKA	AH25, AH27, AH28, AH30, AH33, AH36, AH-38, AH-40, DM-38A, DM-46, A31, A34, A37, A38, A41, A45, UEC37H-II, UEC37/38H, UEC45HA, UEC52HA, UEC37LA, UEC45LA, UEC52LA, UEC33LSII, UEC37LSII, UEC43LSII, UEC50LSII, UEC60LSII, DH38SS, DH51SS
HANSHIN	LU28, LU32, LU35, LU38, LU40, LU46, LU50, LU54, EL30, EL32, EL35, EL40, EL44, LF46, LF50, LF58, LH28
NIGATA	MG16X-A(C), MG20AX, MG25BX, MG28BX, MG31BX, M28AFTE, PA5L, M31EZ
WARTSILA(SULZER)	RTA52, RTA58, RTA62, RTA72, RTA84C(T), RT-FLEX48T, RT-FLEX50, RT-FLEX58T, RT-FLEX60C, RT-FLEX68, RT-FLEX82C, RT-FLEX84T, RT-FLEX96C

Main Engine

Cylinder liner, Cylinder cover, Piston crown, Piston skirt, Exhaust valve spindle, Exhaust valve seat, Cooling jacket, Piston rings, Stuffing box, Fuel pump, Fuel valve, Nozzle, Plunger and barrel, etc.



Aux' Engine Type

MAN B&W	T23LH-4E, S28LH-4E, L23/30, L23/30H, L23/30K, L28/32, L28/32H, L16/24, L21/31, L27/38, L32/40
YANMAR	S165, S185, M200, M220, T220, T240, T260, N18, N21, N165, N260, N280, N330, NY16LW, EY18(A)LW, EY22LW, EY26LW, KL, KFL, KDL, AL, CHL, LAAL, UAL, ZL, Z280
DAIHATSU	PKT(B)-16(A), PS-22, PS-26D(H), PL-24, PL-26, DS-22, DS-26, DL-16, DL-19, DL-20, DL-22, DL-24, DL-26, DL-28, DK-20, DK-26, DK-28, DK-30, DK-32, DC16, DC17
NIGATA	NSD-G, NSF-G, L16X-C
HIMSEN	H17/28, H21/32, H25/33, H32/40

Aux Engine

Cylinder head, Cylinder liner, Piston and Piston ring, Bearing, Connecting Rod, Crankshaft, Valve spindle, Valve housing, Valve seat



Other Equipment Parts

❑ Purifier:

MITSUBISHI, ALFA -LAVAL, WESTFALIA, CHINA BRAND

❑ Pump:

HEISHIN, NANIWA, ISHII, TAIKO KIKAI, TEIKOKU, SHINKO, SHINSHIN, CHINA BRAND

❑ Air Compressor:

YANMAR, TANABE, MATSUBARA, SPERRE, HATLAPA, CHINA BRAND

❑ Turbo Charger:

ABB, MAN, ISHII

Other Equipment Parts





Qinhuangdao Haixi Machinery Equipment Co., Ltd.

leader of marine suppliers in China

Address: No.703, Building 46, 3-3 Plate of The West District Old City Renovation Project
Haigang District, Qinhuangdao City, Hebei, China

Tel: 86-335-8508880

Fax: 86-335-8508882

E-mail: info@hx-me.com, sale@hx-me.com
