



YOUR ENGINE MY PRECISENESS

我严谨，您放心



南通迪赛船舶科技有限公司

DIESEL MARITECH NANTONG CO.,LTD

CONTENTS

目录

公司简介

CORPORATE PROFILE ----- 01

企业文化

CORPORATE CULTURE ----- 02

服务范围

OUR SERVICES

■ 主机部件翻新

ME PARTS RECONDITIONING ----- 03/04

■ 辅机部件翻新

DG PARTS RECONDITIONING ----- 05

■ 螺旋桨修理

PROPELLER REPAIR ----- 06

■ 特种修理

SPECIAL REPAIR ----- 07

■ 现场修理

SITE SERVICE ----- 08

■ 交换件、备件及物流服务

WORDWIDE E/B, SPAREPARTS, LOGISTICS ----- 08

技术引领

LEADING-EDGE TECHNOLOGY ----- 09

品质保证

QUALITY ASSURANCE ----- 10

全球协作

GLOBAL PRESENCE ----- 11

CORPORATE PROFILE

公司简介

南通迪赛秉承 DIESEL MARITECH 专有技术和专业精神，专注于船用柴油机组件的翻新和修理。专业从事船用主辅机组件，如缸盖、活塞、阀杆、阀座、阀壳、活塞杆、活塞裙、缸套、水套、连杆、曲轴、喷油器等翻新和修理，船用螺旋桨修理校正，及特种修理如硬铬电镀、熔覆焊、巴氏合金浇铸、铸铁焊和等离子喷焊等。

公司拥有 2000 平米厂房，配备专业设备、选用优质原材料和精熟于翻新业务的生产技术人员组织生产。

公司位于中国经济最活跃的长三角地区，到上海两小时，至舟山四小时，具有天然区位优势 and 竞争优势。南通迪赛的服务辐射华南华北沿海，一千公里以内取送货“次日达”。公司成立以来，与国内外数百家知名船东公司、管理公司，及国内众多船舶修理厂家，形成了长期协作关系。南通迪赛以其专业可靠的企业形象，赢得信赖，持续发展。

CORPORATE CULTURE

企业文化

企业愿景 Our Vision

成为您的首选

Be Your First Choice

企业使命 Our Mission

船东满意 员工幸福 企业盈利

Shipowner Satisfaction, Employee Happiness,
Enterprise Prosperity

企业价值观 Our Value

提供“质优价美，专业高效”的产品和服务

To Provide ---
Professional Products by Swift Delivery,
Premium Quality with Cost-Effective



DMtech focuses on marine diesel components reconditioning all along, such as piston crown, cylinder cover, exhaust v spindle, seat & house, piston rod, piston skirt, connecting rod, fuel vlave, bearing etc.. She has 2000m² workshop and all kinds of welding, annealing & machining facilities, purchases qualified material, hires professional technicians for produce, operating as per ISO9001:2015 quality assurance standards. DMtech would like to supply leading-edge

technology, superior quality and round-the-clock service worldwide.

DMtech locates in Nantong, Yangtzi River Delta Region, has the great advantages of position and competitiveness. The service from Nantong to Shanghai in 2 hours , to Zhoushan in 4 hours. Moreover, the service expands to coast area of South and North China,DMtech may collect and delivery the parts in next day around 1000 Km.

OUR SERVICES

服务范围

主机部件翻新

ME PARTS RECONDITIONING

■ 主机活塞全翻新

ME PISTON CROWN FULL RECONDITIONING

车除疲劳金属，自动埋弧焊堆焊，焊后退火消除应力，按图精加工，顶部数控仿型，环槽双面镀铬，磨削至标准尺寸，泵压试漏。

南通迪赛可根据客户要求对大缸径活塞顶部加烧 Inconel625 材料，大幅延长活塞使用寿命。

南通迪赛采用“钢活塞滚镀工艺”，铬层致密、晶粒细致、结合力强。环槽磨削精度控制在 0.02mm 以内。

镀层厚度：0.25-0.50mm，铬层硬度 >850HV，微观裂纹 ≤ 400 条 /Cm²。

Coming inspection, pre-machining, dye-checking, welding up by SAW, stress relieving by annealing, fine machining by CNC lathe, grooves hard chrome plating and grinding as OEM recommendation, pressure testing.

DMtech may adopt Inconel625 material to weld up the topside of big engine piston crown according to owner's request, which greatly extends the service life of reconditioned piston crown.

The company adopts "steel piston rolling chrome plating" technology, the chrome layer is dense, fine grain and strong bonding. After final grinding of the grooves, the clearance is within 0.02mm.

The chrome layer thickness: 0.25mm-0.50mm

The hardness: >850HV

The micro cracks: ≤ 400 pcs/Cm²



■ 主机缸盖翻新

ME CYLINDER COVER RECONDITIONING

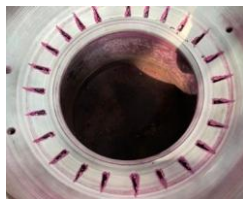
旧件检查数据核对，预加工车除疲劳材料和裂纹，埋弧焊堆焊，焊后退火处理，机加工及曲面仿型。冷却水孔清理及各孔加工。

对易吹蚀的喷油孔加焊耐蚀合金，提高缸盖使用寿命。南通迪赛对各型缸盖都有丰富的加工经验，割盆全翻新缸盖的性能完全可媲美新品。

Detailed inspection, pre-machining and clearing cracks by gouging, dye-checking, welding up by SAW, stress relieving by annealing, fine machining grooves and all valve ports by CNC lathe, cooling bores cleaning, pressure testing.

The fuel injector pockets are welded up with anti-corrosive alloy to extend the service life.

DMtech knows well the specification and particular of all kinds cylinder covers. The performance of full reconditioned cylinder cover compares favourably with new part.



■ 主机阀杆阀座翻新

ME EXH V SPINDLE & SEAT RECONDITIONING

旧件检查，预加工车除烧蚀材料，着色探伤确保无裂纹，气体保护焊，焊后保温，按图加工至原始尺寸。烧重油、高功率的二冲程柴油机，排气阀附近的温度高达 900℃，排气阀阀面及燃烧面很容易烧蚀，造成密封面的吹蚀，因此对排气阀杆和阀座的要求很高。南通迪赛使用专业的气体保护焊和等离子焊设备，采用 Nimonic 和 Stellite 材料对各机型阀杆和阀座进行翻新，并能保证翻新件的金相结构达到紧密一体化的要求。

Coming inspection, pre-machining, dye-checking to sure no cracks, welding by MIG & PAW with nimonic & stellite material, post-weld heat treatment, fine machining.

High efficiency two stroke diesel engines which run in temperature excess 900℃. The heavy fuel and high temperature create a very high demanding environment for exhaust valve spindle & seat. DMtech adopts the synergic & PTA equipment to weld the spindle & seat which achieve metallurgical integrity demand.



■ 主机活塞杆翻新

ME PISTON ROD RECONDITIONING

旧件检查，预加工，着色探伤确保无裂纹，焊前加热，埋弧焊堆焊，精加工，表面镀铬，精磨并抛光。

Coming inspection, pre-machining, dye-checking, pre-heating and welding by SAW, fine machining, hard chrome plating, grinding and polishing to recommendation dimension. The hardness achieve HRC40-60, alignment 0.01mm, roughness.Ra≤0.2.



■ 主机活塞裙翻新

ME PISTON SKIRT RECONDITIONING

旧件预检，裂纹探伤，旧环车除，压装铜环，精加工。

Coming inspection, dye-checking to sure no cracks, pre-machining used copper band, fitting new band and fine machining.



■ 主机油头，高压油管检修

FUEL INJECTION/HP OIL PIPE OVERHAULING

拆解清洗，除油除垢，平面研磨，锥面精磨，泵台试验，防护包装。

Dismantling & cleaning, sealing face & conical face fine grinding, Pressure testing, oiling and package.



OUR SERVICES

服务范围

辅机部件翻新

DG PARTS RECONDITIONING

■ 辅机活塞翻新

DG PISTON HEAD RECONDITIONING

旧件预检，预加工，熔覆焊堆焊，精加工至原始尺寸，表面处理。

Coming inspection, pre-machining the grooves, welding up by laser cladding, fine machining to OEM recommendation size, surface refurbishing.



■ 辅机缸头翻新

DG CYLINDER HEAD RECONDITIONING

旧件预检，泵压检查，阀座孔堆焊并镗孔恢复尺寸，过盈镶圈，密封面及其它各孔检查修理，完工泵压试漏。

Coming inspection and WPT, the pockets for valve seat ring welding up, boring to original size, shrink fitting the valve seat ring, WPT to sure no leakage and delivery.

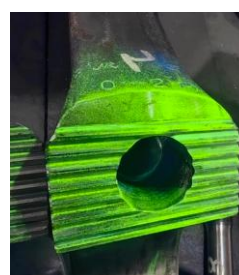


■ 辅机连杆翻新

DG CONNECTING ROD RECONDITIONING

尺寸预检，磁粉探伤，修磨镗孔校中，恢复至原始尺寸。

Coming inspection get the ovality, MT checking, grinding the serration and big end, alignment with the small end.



■ 辅机曲轴修理

DG CRANKSHAFT GRINDING

数据预检，磁粉探伤，判断修磨量，曲拐档或主轴茎修磨，完工探伤并检查各项数据。

Inspection and alignment checking, MT detection, polishing/grinding the crankpins & main journals, dimension checking and MT.



螺旋桨修理

PROPELLER REPAIR



■ 螺旋桨裂纹修理、空泡修补等

CRACKS/NICKS/MECHANICAL DAMAGES/CAVITATION CORROSION REPAIR

Cracks, nicks and other mechanical damages repair, Cavitation corrosions repair. Defects removing, dye-checking, Rebuilding up by MIG welding, Grinding, polishing and dye checking.

■ 螺旋桨弯曲校正

BENDING CORRECTION

Bending repair. Heating up, Hot straightening, cooling down slowly, Repairing zone polishing and dye checking.

■ 桨叶裁边修理

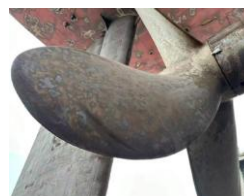
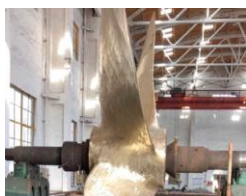
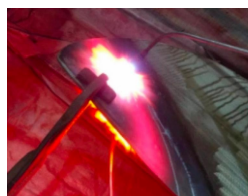
BLADES TRIMMING

Getting the cutting line by templates, cutting & grinding, controlling the temperature during cutting, dye-checking.

■ 螺旋桨对接焊修理，测螺距，静平衡试验

INSERT WELDING/PITCH MEASUREMENT /STATIC BLANCE TEST

Measuring the propeller, Drawing out the cut-off line, Preparing the welding grooves, New inserts joint welding, Propeller turning over and welding, local stress relief, pitch measuring with digital equipment, Static balancing.



OUR SERVICES

服务范围

特种修理

SPECIAL REPAIR

■ 硬铬电镀

HARD CHROME PLATING

大舱油缸柱塞，克令吊油缸柱塞，抓斗柱塞等电镀，尺寸预检，粗车清除腐蚀材料，埋弧焊堆焊，精车并精磨，表面镀铬，精抛处理。

Hydraulic Piston rod, Crab ram Reconditioning.
Coming inspection, pre-machining, stem building up by SAW, fine machining and grinding, hard chrome plating, polishing and cleaning.

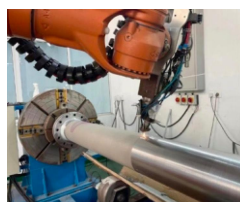


■ 熔覆焊修理

LASER CLADDING

各类密封件内壁修理，轴类密封档或轴承档恢复尺寸。

Inner sealing face of Fuel pump case ,
Exh valve housing, End cover of motor, Bearing shift of Shaft, Stern shaft white liner reconditioning.



■ 各类主辅机轴瓦巴氏合金浇铸

RE-BABBITING & FABRICATING ME /DG BEARINGS

中间轴瓦翻新，艏轴管翻新，十字头瓦翻新，连杆瓦翻新，及新瓦、加厚瓦的制作。

Intermediate bearing, Stern tube bearing, Cross-head bearing, Main bearing & crankpin bearing etc reconditioning. New bearing & thickened bearing fabrication. To be sure for the quality, DMtech adopts centrifugal casting and ultrasonic testing.



■ 铸铁焊修理

CAST-IRON WELDING

南通迪赛熟练掌握铸铁焊工艺，可针对主机四冲程缸盖，透平机壳，付机缸头，各类排气阀壳，泵壳，裙部等进行修复。

DMtech technicians are skilled in cast-iron welding to repair such as 4-stroke cylinder head, Turbine casing, DG cylinder head, Exh V cage, Pump Shell, Piston Skirt etc.



■ 等离子喷焊

PLASMA SPRAY

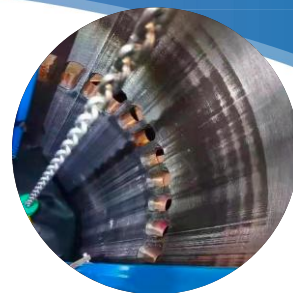
缸盖或缸套水圈的翻新，杆茎翻新，轴类翻新。

The cooling jacket for cylinder cover and cylinder liner, stem of shaft, stem of Exh V spindle reconditioning.



现场修理

SITE SERVICE



■ 主辅机现场吊缸检修服务

IN-SITU OVERHAULING OF ME & DG

■ 缸套珩磨

CYLINDER LINER HONING

■ 曲轴修磨

CRANKSHAFT GRINDING & POLISHING

■ 现场机加工

IN-SITU MACHINING

■ 螺纹修理

THREADS REPAIR

交换件、备件及物流服务

WORDWIDE E/B ,SPARE PARTS , LOGISTICS

■ 交换件服务

EXCHANGE BASIS

根据客户需求, 提供交换件服务, 帮助船东节省时间和费用。

DMtech has exchange pool to help customers to save time and cost.

■ 备件销售

MARINE SPARE PARTS SUPPLY

南通迪赛提供主辅机相关备件的销售, 为客户提供更多的选择方案。

DMtech cooperates with OEM manufacturers and supply all kinds of ME/DG spare parts.



■ 物流服务

LOGISTICS SERVICE

南通迪赛在沿海港口和船厂建立了完备的合作伙伴网络。借助于国内便捷经济的物流平台, 可实时跟踪物流状态, 南通迪赛承诺: 1000 公里内取件和送件“次日达”。

DMtech has long-term cooperate partners in all ports and shipyards of China. Benefiting from the advanced logistics net in China, DMtech promises COLLECTION & DELIVERY ON NEXT DAY inside 1000Km.

LEADING-EDGE TECHNOLOGY

技术引领

南通迪赛在焊接、电镀、金属表面处理、材料力学和精加工等方面不断深入研究，通过活塞滚镀技术、Nimonic 排气阀，缸盖全翻新等工艺改进，推进生产改良和技术升级，公司正努力成为专精特新企业。

与航运公司、科研院校和造机厂保持紧密联系，推动表面处理工艺、热处理技术在翻新工艺中的应用，有效改善了工业活动中产生的过度磨损和烧蚀问题。

DMtech has consistently pioneered developments in Metal Welding , Metal Surface Treatment, Mechanics of Materials and Finishing Machining, which has helped to improve the reconditioning technology and led to changes in components design and manufacturing. DMtech has worked closely with major engine manufacturers, academic institutions & ship owners to overcome the challenges of over wear and serious corrosion which occur in all sectors of industry.



QUALITY ASSURANCE

品质保证



南通迪赛严格按照 ISO9001:2015 质量体系要求组织生产活动，已获得 DNV 船级社认可。车间管理遵照 5S 要求，做好整理 (Seiri)、整顿 (Seiton)、清扫 (Seiso)、清洁 (Seiketsu) 和素养 (Shitsuke)，追求“日事日毕，日清日高”。

DMtech operates as per ISO9001:2015 quality assurance standards. The quality management system is approved by DNV. DMtech workshop runs strictly with the requirements of 5S and practice with 'Overall Every Control and Clear'.

■ 等离子焊、埋弧焊、氩弧焊、激光焊等各类特种焊接技术，应用于金属表面恢复。
PAW, SAW, TIG & MIG, LASER cladding processes are carried out on all type of materials.

■ 采用电脑程序控制焊后热处理，保证焊接应力的消除。
DMtech strictly performs post weld heat treatment to ensure the elimination of welding stress.

■ 应用数控加工确保加工精度和最终仿形。
Full range of CNC Machining for accuracy and consistent results.

■ 关键岗位员工工作于再生行业超过 15 年，精熟于翻新修理业务，熟知各类工件的质量控制要点。
Most technicians of DMtech have been working in recondition industry more than 15 years, they know how perfectly and know why profoundly.



GLOBAL PRESENCE

全球协作

- 南通迪赛服务于国内外众多航运公司，航运服务商和修船厂家，致力于提供“质优价美，专业高效”的服务。
DMtech service covers thousands of ship owners & ship management companies of world-wide, lots of Shipping services & most of ship repair enterprises in China.
- 南通迪赛专业翻新和维修 MAN B&W, Sulzer, Wartsila, WIN GD, UEC, CAT, Yanmar, Daihatsu 等系列主辅机备件，与相关产品服务商形成长期协作和技术支持。
DMtech is professional for marine diesel parts reconditioning and repair for MAN B&W, Sulzer, Wartsila, WIN GD, UEC, CAT, Yanmar, Daihatsu etc. DMtech cooperates with the manufacturer services and acquires the technical support.
- 南通迪赛作为国际化公司，技术协作和服务网络遍布全球。与新加坡、迪拜、希腊、土耳其、印度等合作伙伴形成长期友好协作关系。
DMtech is a company with global services and technical sharing. DMtech has close cooperation with partners in Singapore, Dubai, Turkey, India and Greece.



南通迪赛船舶科技有限公司

Diesel Maritech Nantong Co., Ltd

地址江苏省南通市崇川区兴盛路 129 号

Pic 成国荣 Ron Cheng

Mob 0086-13776909006

Add: No. 129, Xinsheng Road, Nantong

Email: sales@dmtechnantong.com

Tel: 0086 513 85252179 / 85252169

Fax: 0086 513 85252169

WEB: www.dmtechnantong.com



手机官网

 **SHIPSERV**
TN-309544