



Contact Us:

Office Address: 1 North Bridge Road, #06-12 High Street Centre, Singapore 179094

Manufacture Address: 3 Toh Tuck Link, Singapore 596228

Tel: +65 69087008
+65 69087968

Http: www.towingmarine.com.sg

E-mail: sales@towimor-marine.com / travis@towingmarine.com.sg

Towing Marine Energy Pte Ltd

OUR PROFILE

**Building Brilliance into the Deep Sea
Specializes in Deck Machineries and Cranes**



OUR HISTORY

In 2022

- Singapore Towing Marine acquired a significant stake in a reputable factory that specializes in Marine Crane and Winch solutions.
- This partnership signifies an important milestone for both entities.

Established in 1995

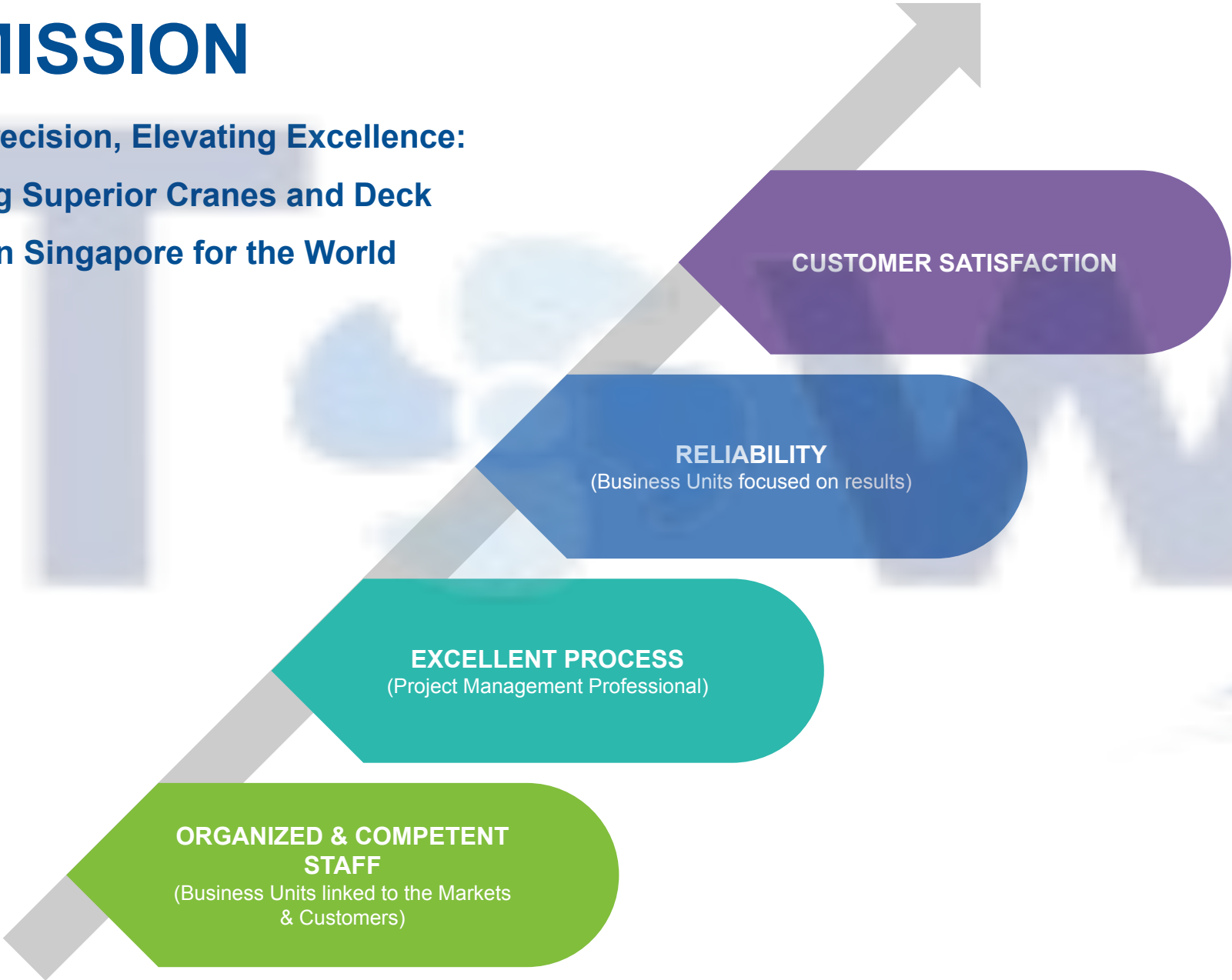
- Our manufacture have expansive facilities covering 360,000 square feet and over 200 skilled professionals.
- Equipped with cutting-edge technology for welding and machining.
- Equipped with specialised test platforms:
 - 300-ton Winch Test Platform
 - 1500-ton Crane Test Platform
 - 3000-ton/meter Crane Test Platform

In August 2024

- A new facility will commence operations in Toh Tuck Link, Singapore.
- It will specialize in Factory Acceptance Testing (F.A.T) and commissioning.
- This will enhance our ability to deliver seamless solutions to our valued clients in Singapore and beyond.

OUR MISSION

Pioneering Precision, Elevating Excellence:
Manufacturing Superior Cranes and Deck
Machineries in Singapore for the World



DECK EQUIPMENT (ANCHOR WINDLASSES / MOORING WINCHES)

Proven own Solutions	Over 10,000 pcs of Anchor Windlasses / Mooring Winches were sold and applied
Reliable & Competitive	Solutions in use over 50 years
Position on the Market	Many (ca.400 shipsets) deliveries to the biggest Korean Shipyards (Samsung, Hyundai, Hanjin)
Variety of Execution	Pull up to 35T. & chains up to 157mm electric drive (pole change & with frequency inverter) & hydraulic drive

MARITIME PRODUCTS

Mooring Winches

Windlasses

Chain Stoppers

Capstans

Special Winches

Deck Cranes



OFFSHORE PRODUCTS

Towing Winches

Offshore Crane
(API2C Standard)



SPECIFICATIONS



750T Chain Jack with Integral 250T Windlass



100T Offshore Towing Winch

Specifications:

- Hydraulically Powered
- PLC Controlled
- Operates in 2 modes

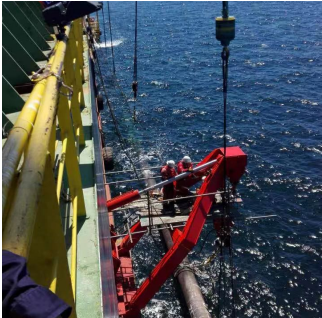
INNOVATION - REMOTE CONTROL



Remote Control of the Brake

Remote Control of the Clutch

PORT CRANE MARINE & OFFSHORE CRANE



Davits



**Offshore
Platform
Crane**



**AHC Knuckle
Boom Offshore
Crane**



Offshore Crane



A Frame



**Anchor
Windlasses /
Mooring
Winches**



**Cargo
Winches**



**Vertical
Windlasses**



**Anchor
Windlasses**



**Special
Winches**

WINDLASSES & WINCHES

PORT CRANES



Single-arm Rack Port Gantry Crane



Four-bar Linkage Port Gantry Crane

Capacity:

- Lifting Weight: 5T to 60T
- Working Range: 7m to 50m



Port Harbour Mobile Crane

Capacity:

- Lifting Weight: 15T to 100T
- Working Range: 20m to 45m



Rubber Tyre Gantry Crane (RTG)
Capacity: SWL 15T - 80T



Ship-to-Shore Crane (STS)
Capacity: SWL 40T - 80T



Ship Loader / Unloader
Capacity: 500T/h - 3000T/h



PORT MACHINERIES

CRANE AND SUBSEA CRANE FEATURES AND ITS ADVANTAGES

Crane
(1T - 500T Lifting Capacity)

Subsea Crane
(15T - 250T Lifting Capacity)

Lightweight Design:
Benefits hull stability.

Mature Design:
Produced locally, trustable and reliable.

High Integration:
Can be delivered as a whole, saving installation time and costs for the shipyard.

Active Heave Compensation (AHC) System:
High compensation accuracy and stable operation.

Precise lifting under extreme cold conditions:
Operates in extremely cold environments with temperatures as low as -40°C.

Winch Options:
Can be delivered with Hydraulic or Electric Winch Drives.

Flexible Placement:
The Hydraulic Power Unit (HPU) and Winch can be located either on the Crane or below deck.

CONTROL SYSTEMS AND OTHER FEATURES

Integrated Movements:
Active Heave Compensation, tension mode, auxiliary, and Towing's Winch functions are integrated in the in-house designed control system.

Precision and Safety:
Ensures precision and safety during critical operations.

Operator Flexibility:
Provides operators with greater flexibility when planning operations.

Additional Options:
Towing's cranes offer a range of options, including Motion-compensated Ship-to-ship Load Transfer Systems and Personnel Lifts.

THE BIGGEST WINDLASS (157mm Chain)



22.000 TEU Containers

PRODUCT ADVANTAGES

Windlasses & Winches

- **Automatic control, constant tension function standard (Main Advantage)**
- Environmental Protection
- Resistance against extreme cold environment(-40°C - 60°C)
- Lightweight structural design
- Durable
- Strong brand competitiveness

Cranes

- Environmental Protection
- Resistance against extreme cold environment(-40°C - 60°C)
- Lightweight structural design
- Durable
- Small space occupation
- High efficiency
- High safety performance (can be equipped with AHC system)
- Strong brand competitiveness



SERVICES

Factory Acceptance Test

Commissioning

Product Customizations

After-sales Services

Spare Parts

Upgrades & Repairs

FACTORY ACCEPTANCE TEST(F.A.T) & COMMISSIONING

Factory Acceptance Test:

F.A.T is conducted with our expertise at dedicated facilities prior to delivery of each equipment. This is part of our commitment to deliver quality products and meet customer satisfaction. During F.A.T, products will undergo demonstrations and verifications to ensure their installation, assembly and functionalities are in accordance to required specifications. Third party witnessing can also be engaged if required.

Commissioning:

Commissioning can be conducted on site if required. Our experienced commissioning team will liaise with customers' team to verify installation and connections of the products are as per design. Testing will be conducted thereafter to ensure products fulfill all operational requirements.

FABRICATION FACILITY

CNC Horizontal Lathe



CNC Horizontal Lathe



Digital Displayed Vertical Lathe



CNC Horizontal Lathe



CNC Vertical Lathe



CNC Borer / Miller



CNC Milling



Detecting Flaw Room



Laser Cutter



Veneer Reeling Machine



300T Winch Test Bed;
3000T/m Crane Test Platform



50T Gantry Crane



AFTER-SALE SERVICE OFFICES

