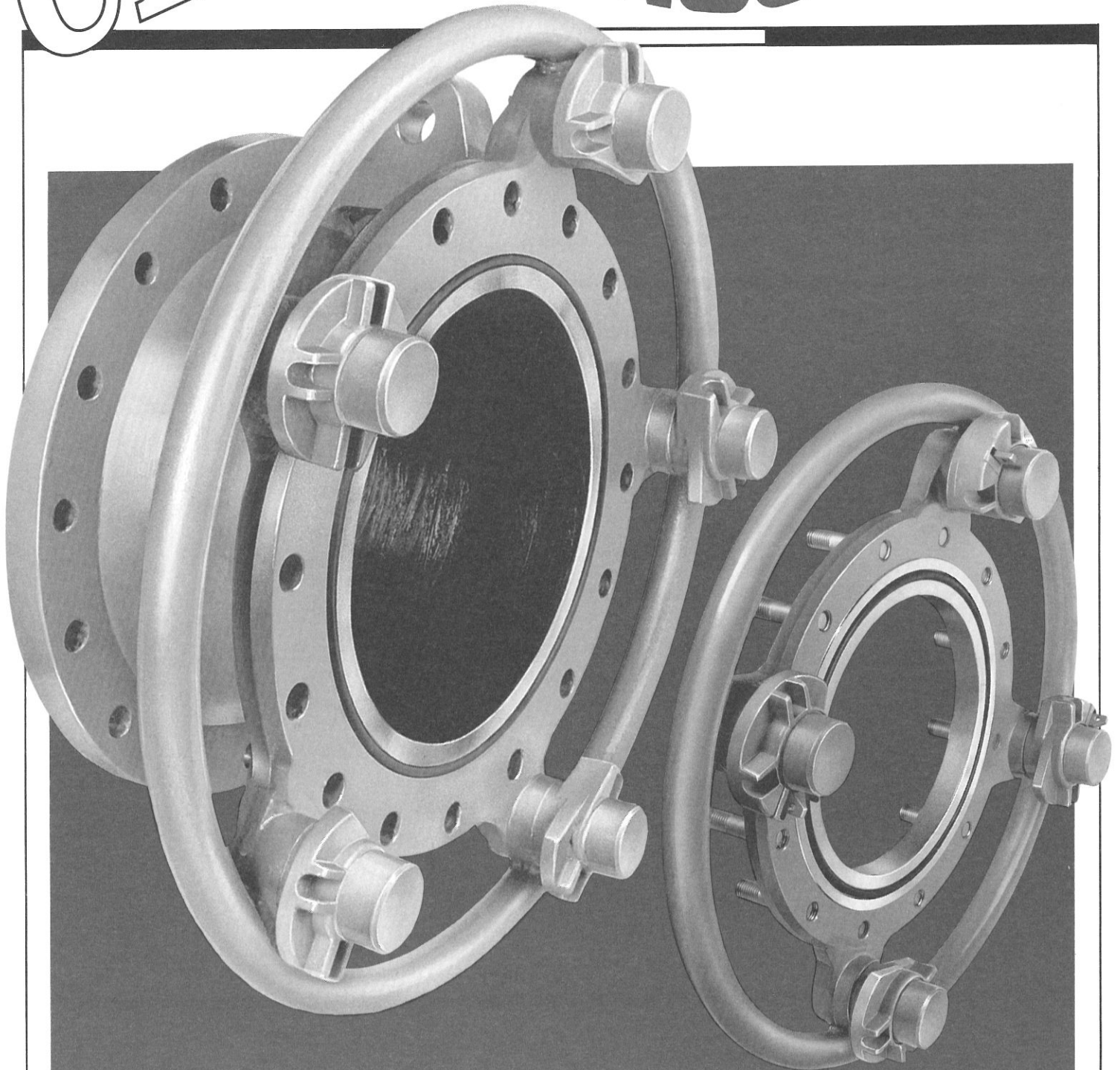


CL COUPLINGS

**For Marine Service:
Short-Spool Piece
and Studded-End**

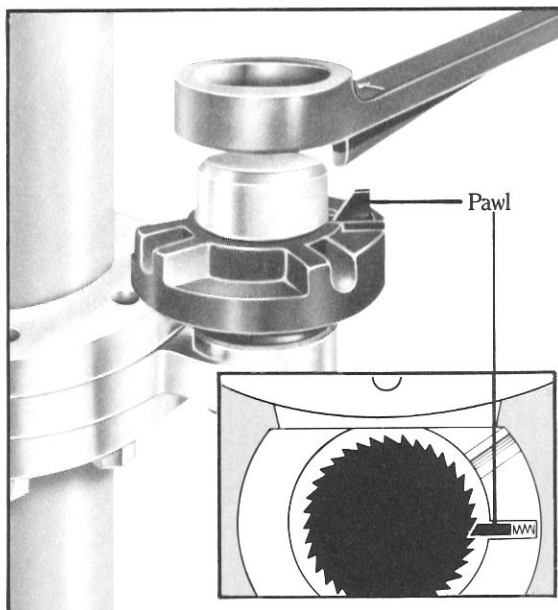


Keeping You in Control

C-L COUPLINGS

For Marine Service: Short-spool piece • Studted-end

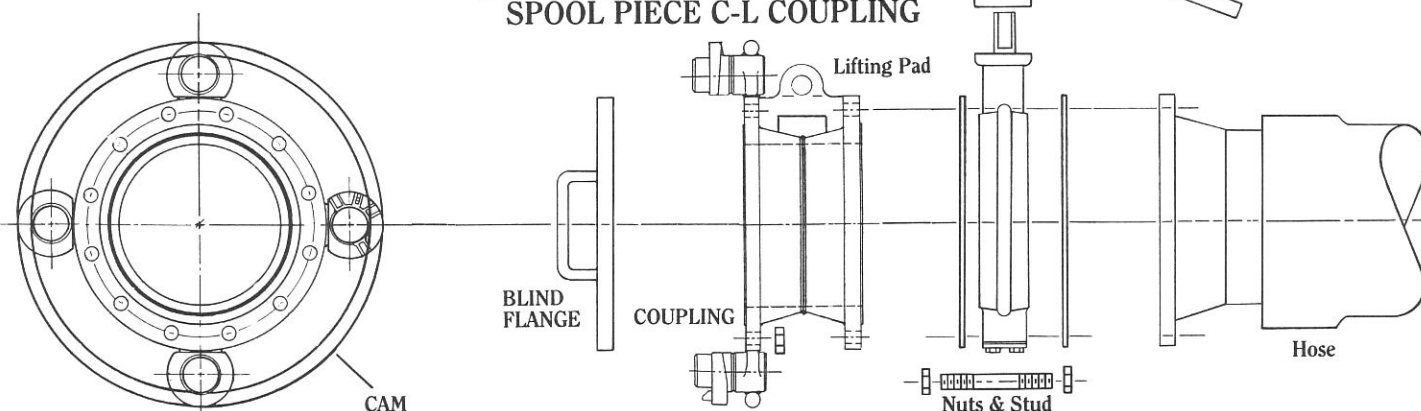
These couplings give you the quickest, safest possible flanged connections on a wide range of applications: hoses, manifolds, loading arms. The helical cams (from three to ten per coupling, depending on diameter) are easily rotated into place – the average three-cam connection is accomplished in less than a minute. And each cam is individually locked in place so that it cannot be loosened without the special wrench (see right). The result is a vibration-proof, leak-proof, twist-proof connection. These couplings are built to 150# or 300# ANSI standards, but can be configured to match any DIN, JIS or other application.



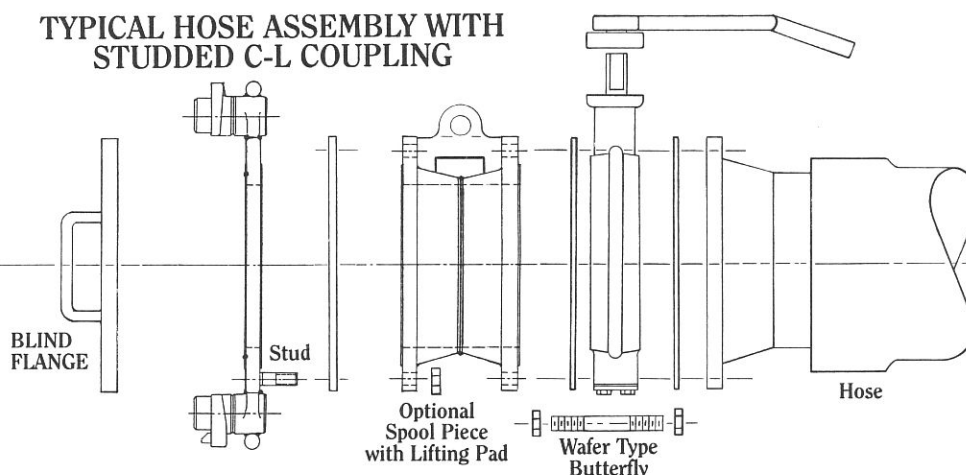
Each cam locks safely in place

When the mating flange is inserted into the coupling, each helical cam is tightened with this supplied wrench which activates a built-in ratchet lock (see inset). When the wrench is removed, the pawl grips tightly against the ratchet teeth, preventing the cam from turning back and loosening. To open the coupling, the collar on the wrench disengages the pawl from the ratchet, which then allows the cam to rotate counter-clockwise, releasing the flange.

TYPICAL HOSE ASSEMBLY WITH SPOOL PIECE C-L COUPLING



TYPICAL HOSE ASSEMBLY WITH STUDDED C-L COUPLING



Web Site: <http://www.oettco.com/mmc.html>

MMC International Corp.

MMC International Corp.

60 Inip Drive
Inwood, NY 11096-0664 U.S.A.
Phone: 1-800-645-7339
Fax: 1-516-371-3134

MMC (Europe) Ltd.

South Nelson Road
South Nelson Industrial Estate
Cramlington
Northumberland, NE23 9HL UK
Phone: (01670) 738111
Telex: 537005 MARINE G
Fax: (01670) 738789

Keeping You in Control

MMC (Asia) Ltd.

7-7, 2-Chome, Kotonoo-Cho
Chuo-ku, Kobe 651
Japan
Phone: (078) 251-1033
Telex: 5624163 OPECK J
Fax: (078) 252-0265

