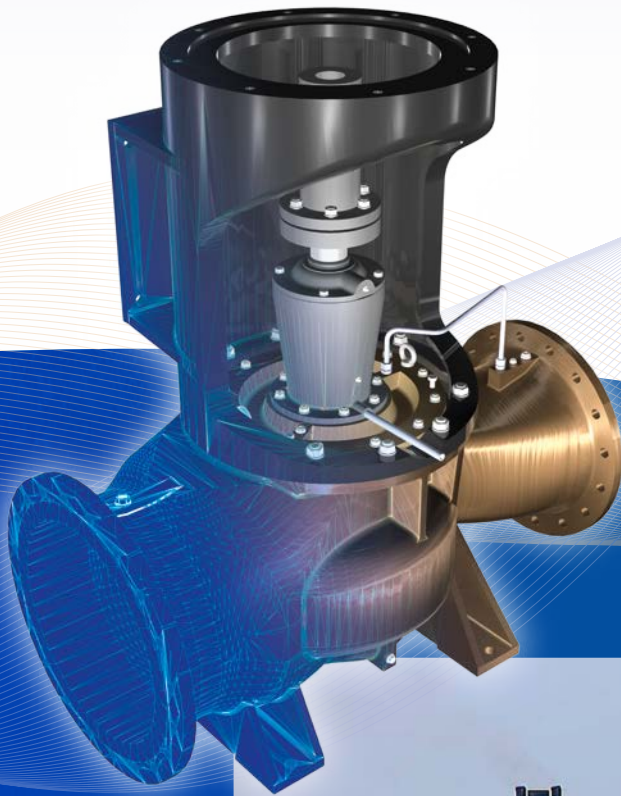
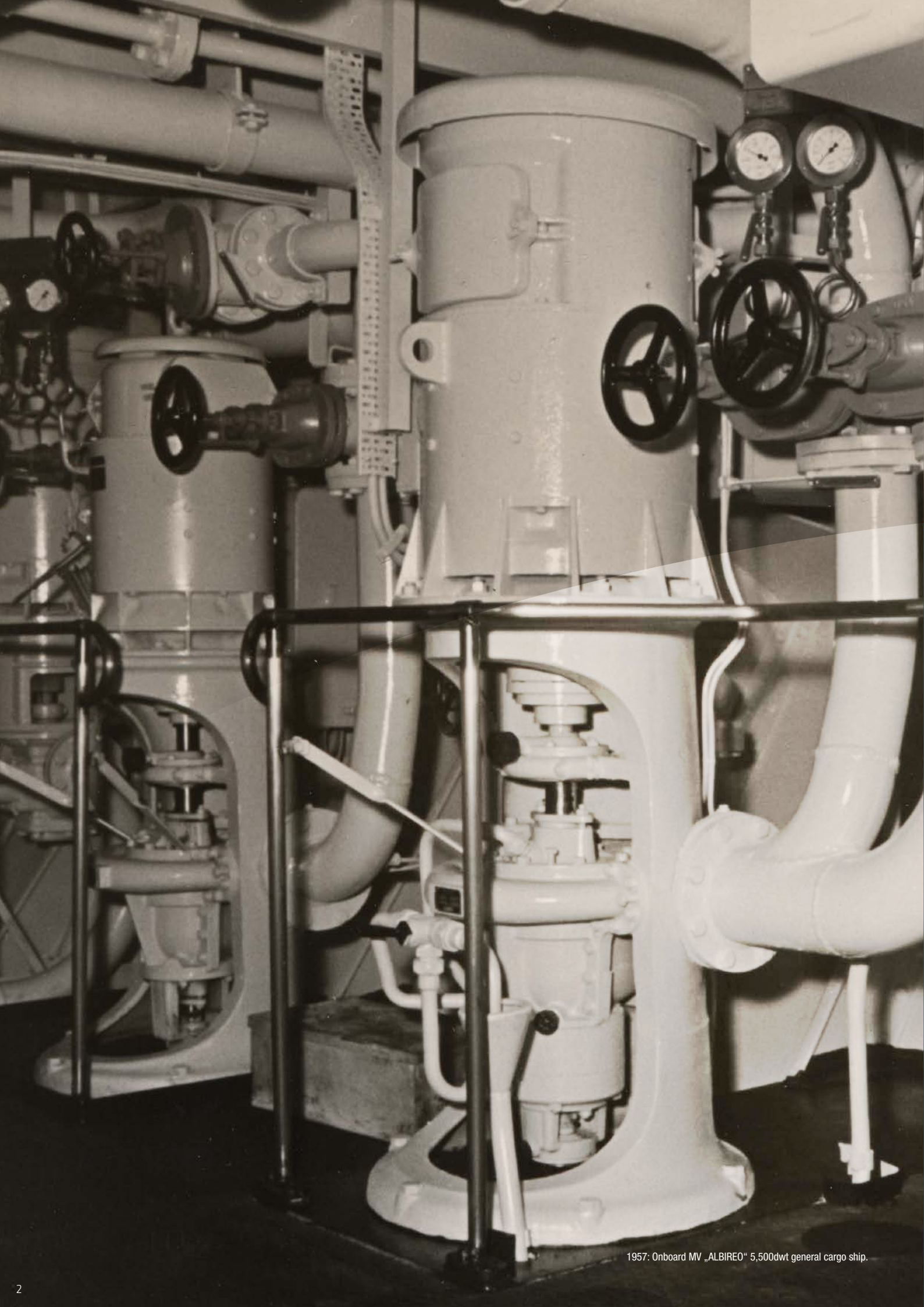


We move water in perfection.



Behrens Pumpen



1957: Onboard MV „ALBIREO“ 5,500dwt general cargo ship.

A view astern – Continuous development

Behrens Pumpen was founded in 1948 by Heinrich Behrens. Through his expert knowledge, the company became a specialist in centrifugal pumps for ships and we continue to maintain our reputation for quality with our own machining and manufacturing.

As a family owned company in Bremen, we are strongly connected to these roots and proud of our modern factory. We are committed to accurate inspection and testing and our cooperation with all classification societies is an assurance of our continued quality.



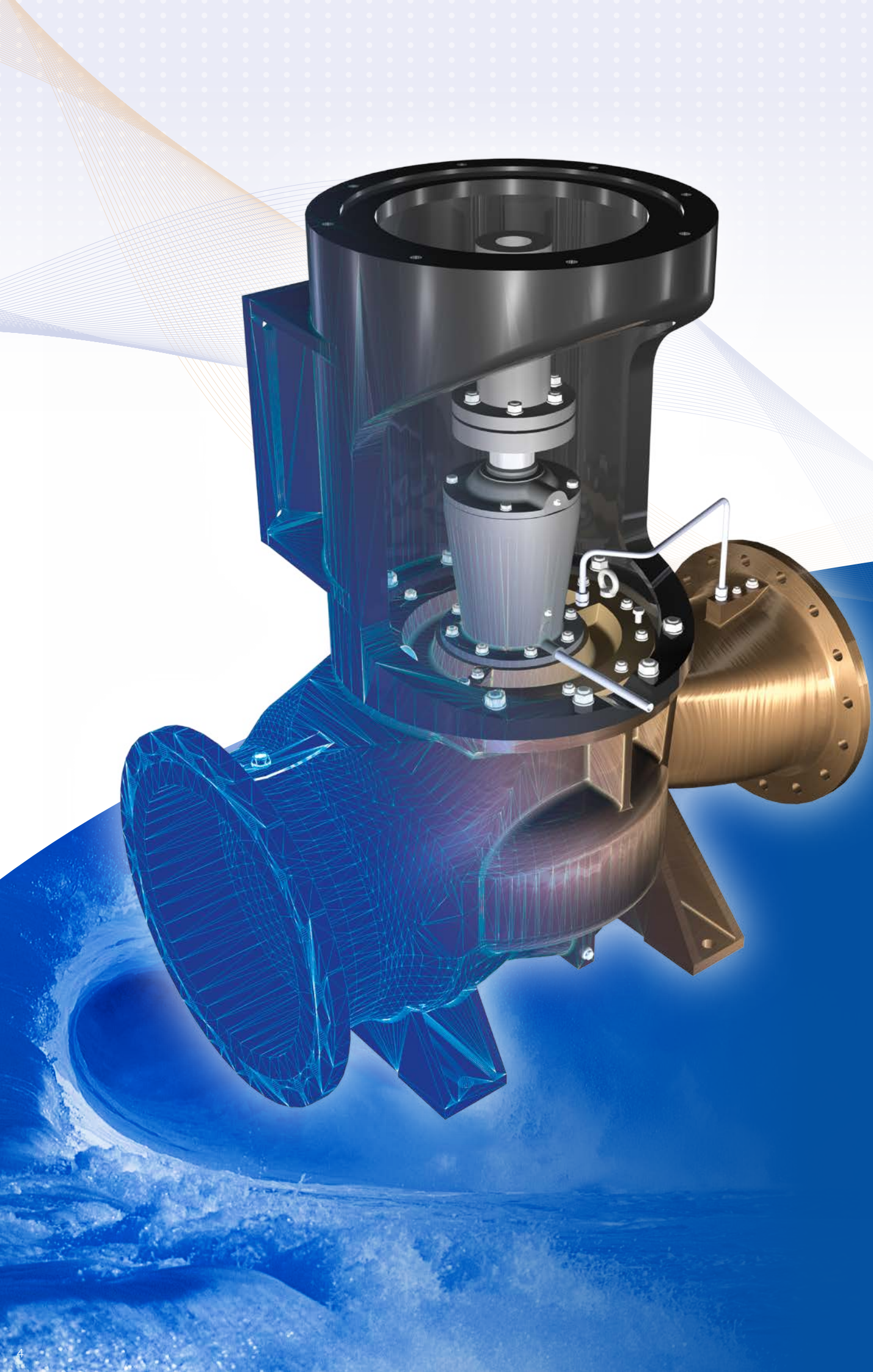
1952: Turning Lathe in the first factory



1970: The third factory

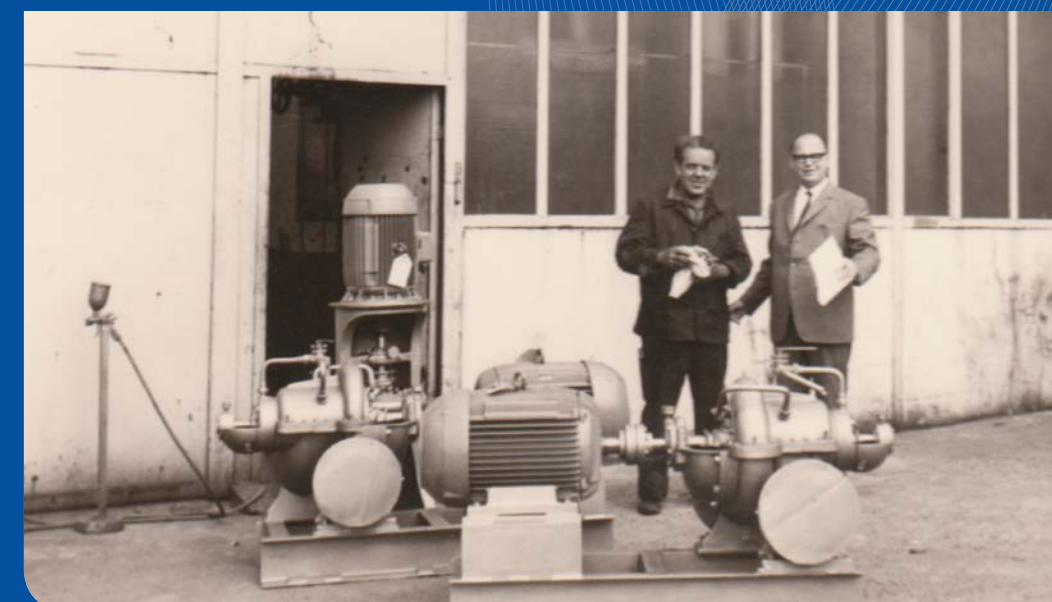
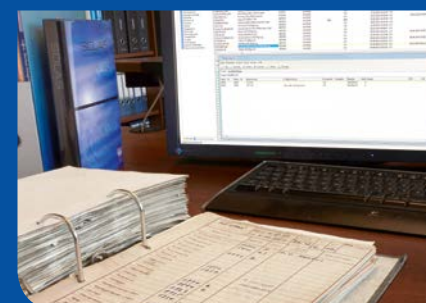


1958: Pumps for a general cargo ship on the testbed



At the helm – Responsible ownership

Responsible action with an eye towards the future. That is our legacy, carried from generation to generation at Behrens. We build long term relationships with our employees, customers and suppliers. The responsibilities, goals and values of the maritime industry are an essential part of our corporate identity in which the ship is always at the heart of what we do.

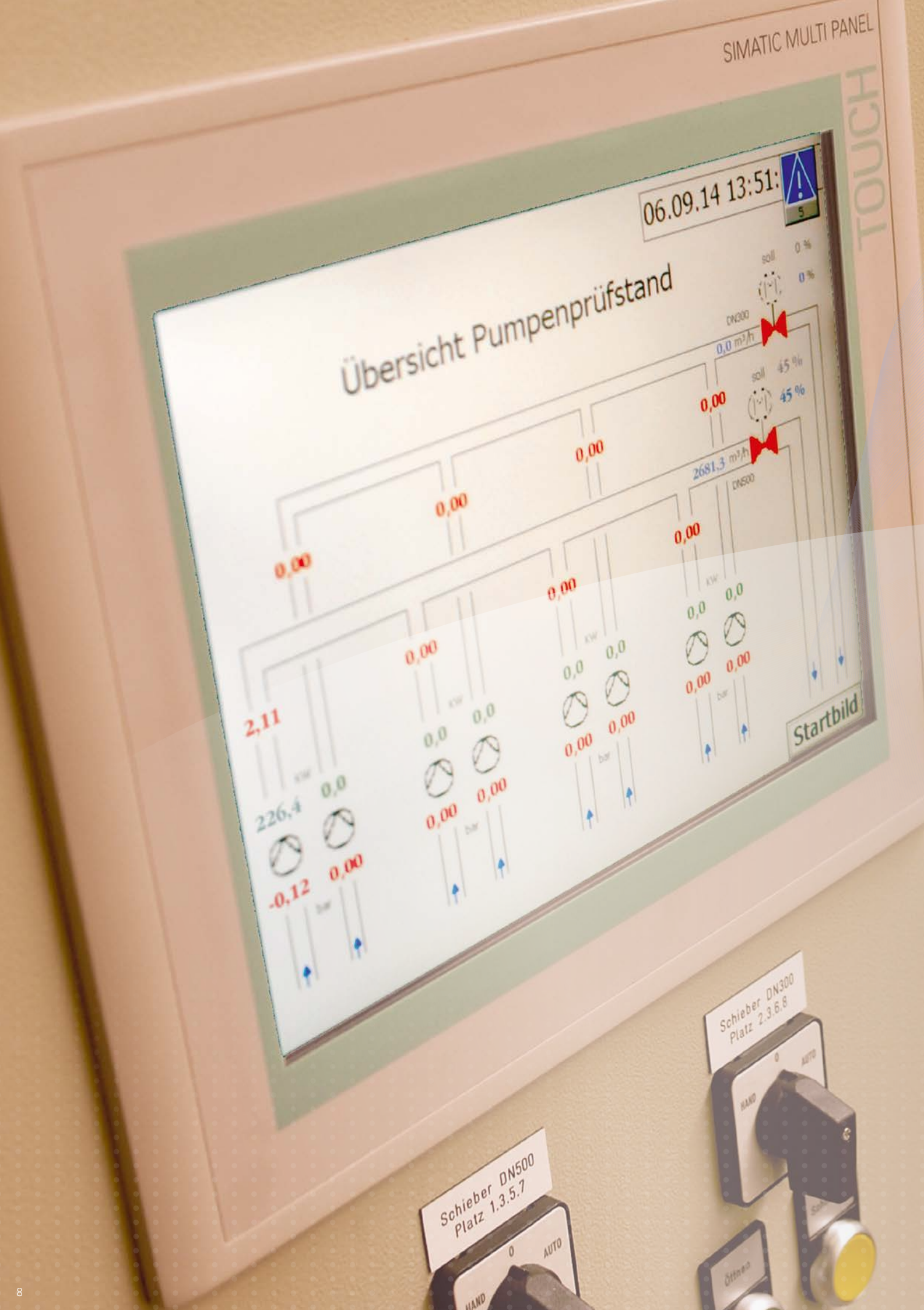




Full speed ahead – For you

As specialists in the shipping industry, with our vertical range of manufacture, we are in perfect position to deliver high end, customer orientated products. Single ships or a large series can all be served from our factory. Our individualized, comprehensive service comes as standard.





Log: everything checked and approved.

The flawless operation of all our systems is imperative when your ships are at sea. In this environment, our pumps combine excellent reliability and serviceability. More than 60 years experience on over 3000 ships has gone into the selection of our materials and construction of our products. Meticulously produced with the best materials under stringent quality control measures, our pumps are of the highest standard. Even the smallest details are given our fullest attention and that is why a growing number of customers rely on Behrens original products.





Propulsion – Manufactured for motion

From research and development through to the delivery - Behrens provides you with premium quality, one-stop shopping. With modern manufacturing processes and EDP based production control, we are able to realize our ideas under one roof. Before embarking on their voyage, all of our products must complete extensive trials at our in-house testbay, as only meticulous testing provides flawless performance. Quality. Reliability. Our guarantee for satisfied customers around the world.





On course – Towards the Future

Early Platon concluded: “everything flows”. This dynamic philosophy also describes the global maritime markets of today. That is why we always provide more than the specification demands. Together with our customers – shipping companies, shipyards and engine manufacturers – we develop the right solution for every project.

Our double suction series up to DN 600 answers the ever growing demand for higher pumping output.





Our fleet – For your fleet

Whether cooling-water or general service pump, ballast or fire fighting pump – with our products everything functions as intended. Every pump system is customized for the designated operation environment and the materials are optimized for the pumped medium. A pumping capacity of more than 4000 m³/h is possible.

Next to the proven centrifugal pumps VRF, VRW, VDF and VNF other series can be provided on demand.





Keeping watch – Night and day

Everything runs efficiently. This is also true for the delivery of original or spare parts. With Behrens you are in safe hands - and we are quickly on site. Our modern EDP-system is specially designed for the maritime requirements. This provides a quick overview of the ships name, IMO-number und all data regarding the pumps on board.

Our service team is available for you around the clock. An extensive stock allows for the dispatch of virtually any spare part within 24 hours. You can rely on this service, in every port and every sea around the world.





References

Our trade lies mainly in Europe, China and Korea, we are on hand all over the world. Wherever ships are built, we welcome shipyards amongst our customers.

DSME: over 100 ships
GWS: over 45 ships
HHI: over 100 ships
HHIC: over 75 ships
Meyer: over 50 ships
Yangfan: over 100 ships





Heinrich Behrens Pumpenfabrik GmbH & Co. | Von-Thünen-Straße 7 | 28307 Bremen | Germany
Fon +49 (421) 4 86 81-0 | Fax +49 (421) 4 86 81-11 | www.behrenspumpen.de | info@behrenspumpen.de