

Intercept 8500 LPP

TBT free, low friction, linear polishing polymer antifouling

An ultra-high performance, low friction, linear polishing polymer (LPP) antifouling incorporating unique patented Lubyon and silyl methacrylate technology.

For vessel owners/operators, who require consistent hull performance throughout the docking cycle, Intercept® 8500 LPP provides the highest biocidal antifouling performance compared to other SPC/ Biocidal Contact Leaching Silicone coatings.

Intercept 8500 LPP is particularly suitable for the demanding fouling conditions typically found in coastal waters and is suitable for application at newbuilding or maintenance and repair.

Key features

- Linear polishing rate which produces consistent in-service performance by delivering controlled biocide release during the full dry-dock cycle
- A faster polishing rate compared to other Intercept products, combined with an optimized biocide package delivers highest performance fouling control for a biocidal system
- Particularly suitable for the most challenging fouling conditions such as those found in coastal waters.
- High volume solids (56%) & low VOC (378g/l) for faster application, reduced waste and less paint requirement.
- Single coat schemes for most short drydock intervals saving time and money.
- Can be applied by airless spray, brush and roller down to -5°C and up to 35°C.

Product information

Colour	LPP854 - Brown LPP857 - Red
Surface preparation	Intercept 8500 LPP should always be applied over a recommended primer coating scheme
Volume solids	56% ± 2% (ISO 3233:1998)
Typical film thickness	125 microns dry (223 microns wet)
VOC	378g/l EPA Method 24
Method of application	Airless spray, Brush, Roller

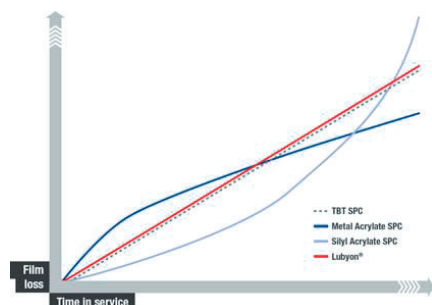
LUBYON®



Intercept 8500 LPP

TBT free, low friction, linear polishing polymer antifouling

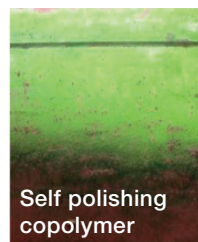
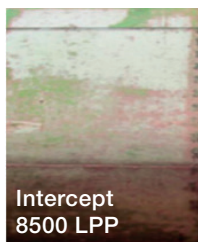
Linear polishing



Unlike typical silyl and metal acrylate biocidal antifoulings, Intercept 8500 LPP replicates the linear polishing behavior of previous tributyltin based antifoulings. Typical silyl acrylate based products polish slowly initially, thereafter the rate of polishing steadily increases.

Whereas typical metal acrylate systems polish fast initially before reaching a steady state.

Performance case study



Performance on a 6,400 DWT Product Tanker after 21 months.

Trading route and fouling risk exposure indicated via Intertrac.

Excellent performance after trading 95% of time in high/very high fouling challenge location

Low cost coastal schemes - e.g. 36 months drydock cycle

Number of coats*

Sea miles per month	Repair		New build - Short fitting out period		New build - Long fitting out period	
	Vertical sides	Flat bottoms	Vertical sides	Flat bottoms	Vertical sides	Flat bottoms
4000	1	1	1	1	1	1
5000	1	1	1	1	1	1
6000	1	1	1	1	1	1
7000	1	1	1	1	2	1
8000	1	1	1	1	2	1

*Consult local International Representative for film thicknesses

For each of our products the relevant Product Data Sheet, Material Safety Data Sheet and package labelling comprise an integral information system about the product in question. Copies of our Product Data Sheets and Material Safety Data Sheets are available on request or from our website. Unless otherwise agreed in writing, all products supplied and technical advice or recommendations given are subject to the Conditions of Sale of our supplying company and the provisions of the relevant product data sheet.

international-marine.com

Registered trademark of AkzoNobel in one or more countries. © 2019 Akzo Nobel N.V.

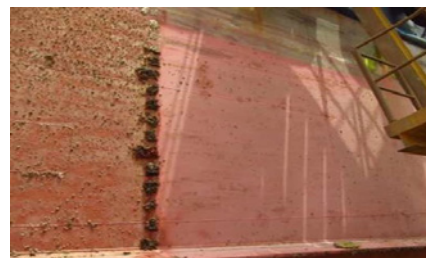
In service performance



Performance on 3,000 DWT Platform Supply Vessel after 21 months trading in Arabian Gulf.

Excellent performance compared to other high performance Self Polishing Copolymer products.

7% activity >3 knots



Performance after 12 months on Platform Supply Ship trading in Arabian Gulf.

9% activity >3knots

"The performance of the test patch of Intercept 8500 LPP on the KMB 4 was excellent, considering the extreme fouling challenge encountered in the Gulf and low activity of this vessel.

For future dockings on vessels with similar trading profile my preference would be to use Intercept 8500 LPP."

Sujith Menon Technical Manager,
Sea Light Shipping & Offshore Co.Inc.
Noor Al Bahar Ship Charter LLC