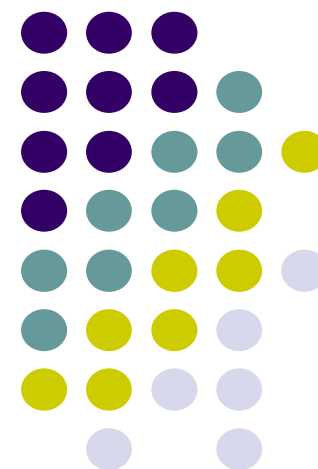




Company profile



R10(1. Feb. 2022)

I. Company history

- 1966 Yokohama Denko Electric Co., Ltd. Established at Yokohama
- 1957 Daito Marine Engineering Co., Ltd. Established at Kobe
- 1972 Toyo Reefer Maintenance Co., Ltd. Established at Kawasaki
- 2001 Acquired "ISO9001"
- 2008 Yokohama Denko Electric Co., Ltd merged with
Daito Marine Engineering Co., Ltd and
Toyo Reefer Maintenance Co., Ltd.

Registered name changed to "**BOLTECH Co., Ltd.**"

- 2016 BOLTECH celebrates its 50th anniversary

Electrical Division: Composed by Yokohama Denko Electric

Machinery Division: Composed by Daito Marine Engineering

Refrigeration Division: Composed by Toyo Reefer Maintenance



II. Company overview

1. Location



Office Name	Address	Tel No.
Head Quarters / Electrical div.	220-0073 2-8-13 Okano, Nishi-ku Yokohama	+81-45-290-6085
Solution Engineering div. Yokohama branch	221-0022 1-2-2 Moriya-cho, Kanagawa-ku, Yokohama	+81-78-461-6971
Electrical div. Kobe branch	652-0822 1-2-3 Nishide-machi, Hyogo-ku Kobe	+81-78-651-6031
Machinery div. Kobe branch	652-0822 1-2-3 Nishide-machi, Hyogo-ku Kobe	+81-78-651-2727

II. Company overview

2. Number of employees

Total Number of employees : 140 (as of Dec. 2021)

Head Office / Electrical div. : 47

Solution Engineering div. : 39

Electrical div. Kobe : 33

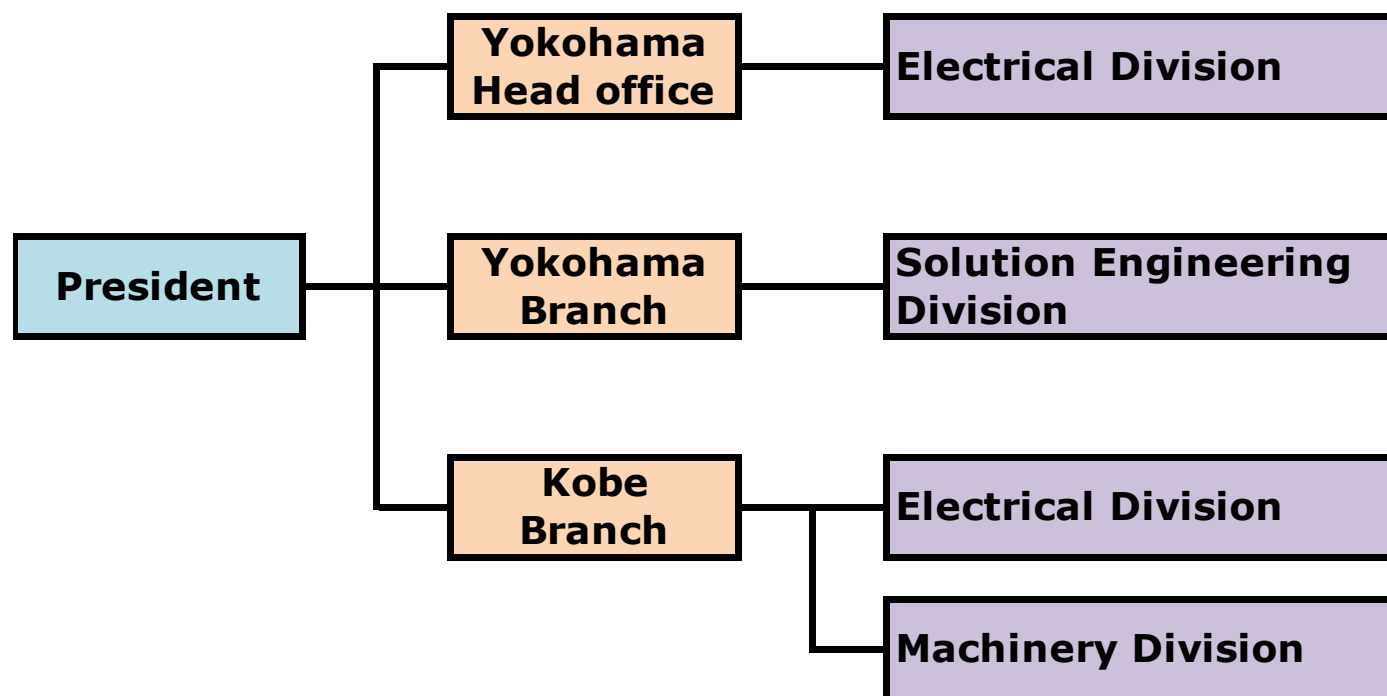
Machinery div. Kobe : 21



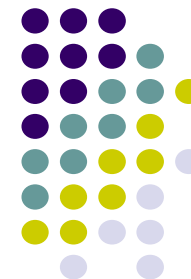
II. Company overview



3. Structure



III. Our business



Products & Service

1. Marine business

<Products>

Marine Growth Preventing Device(MGPD)/ Ferrous Ion Generating Device
Portable Emergency DC source / Battery charger (& dis-charger)
Main switch board / Emergency switch board / Local starter panel / etc.

<Maintenance / Repair Service>

Marine loading equipment / Main switch board / Emergency switch board
Battery charger / Local starter panel / Generator / Governor system
Main engine Remote control / Thruster / Azimuth thruster(Z-peller)

<Construction>

Install & wiring work for general marine equipment

<Coordination of retrofit project>

Ballast water management system (BWMS) / Low sulfur M. G. O. system
Retrofit engineering, supervision, electrical wiring, commissioning

2. Shore business

<Products>

General electric equipment for shore plant

<Commissioning / Maintenance / Repair Service>

Co-generation plant / Gas-turbine generator / Gas-engine generator
Emergency generator / Electric distribution equipment

III. Our business



Products & Services

【If you encounter these situations : 】

- “The general purpose product is insufficient with your requirement.”
- “Want to renew an equipment with same dimension as the old one, but of different specification.”
- “Want to renew an equipment, but vessel has no schedule for dry dock.”
- “Want to install additional(wiring) work while vessel is in operation.”
- “Want to inspect an equipment, but don't have an instruction manual, and cannot arrange maker's service engineer.”
- “Want to replace an equipment that has many troubles with another maker's equipment.”

PLEASE CALL US.

IV. Our business details

1. Electrical division

Our Products

- | | |
|-------------------------------------|--|
| 1. [Chlorine Attacker](MGPD) | 4. Battery charger |
| 2. [Ferrous Protector](Fe-Ion Gen.) | 5. Marine manufacture of control panel |
| 3. Regulated DC power supply unit | 6. OEM products |



Technical service & Parts distribution

Nabtesco

 Nunotani Nautical Instruments Mfg Co., Ltd.



 **TERASAKI**
Innovators in Protection Technology

BEMAC
UZUSHIO ELECTRIC

 **SINFONIA TECHNOLOGY**

NOHMI
NOHMI BOSAI LTD.

 **MITSUBISHI ELECTRIC**

EXIDE
BATTERIES

 **Sonnenschein**

 **SANSHIN ELECTRIC CORPORATION**

Raychem
Tyco Electronics

 **MOTOROLA SOLUTIONS**

 明陽電機株式会社
MEIYO ELECTRIC Co., Ltd.

NZK

JRCS JRCS MFG. CO., LTD.

FAN & ELECTRIC
ONISHI ELECTRIC INDUSTRY CO., LTD.

NISHISHIBA
NSDK

NHE
NIPPON HAKUYO
electronics, Ltd.

 **Consilium** **NITTAN**

tyco
Fire Protection
Products

 **THORN**
SECURITY

 **NEI**
NIPPON ELECTRIC INSTRUMENT, INC.

IKNOW
IKNOW MACHINERY

 **Fuji Electric**

OMRON

 **TDK**

 **GS YUASA**

 **FURUKAWA BATTERY**
INDONESIA

IV. Our business details

1. Electrical division

Agent's contract for Commissioning service & After sales service

Kawasaki Heavy Industries, Ltd.

Gas Turbine Generator

Gas Engine Generator

Kawasaki Machine Systems, Ltd.

Gas Turbine Generator

JFE Engineering Corporation

Ballast Water Management System

Gas Engine Generator

Nabtesco Corporation

Marine Equipment Controls

Nunotani Nautical Instruments Mfg Co., Ltd.

Nunotani Keiki Seisakusho Co., Ltd.

Marine Equipment Controls

Nakashima Propeller Co., Ltd.

Propulsion System

Taiyo Electric Co., Ltd.

Marine Electric Equipment Controls

Nohmi Bosai Ltd.

Fire Alarm Systems

Optimarin AS (Norway)

Ballast Water Treatment System

CMR (France)

Engine Monitoring System, Wiring System

SunRui Marine Environment Engineering Co. Ltd (China)

Ballast Water Management System



IV. Our business details

2. Machinery division

Plant machinery

Maintenance / Installation / Repair / Supervision

of Diesel / Gas generation plant, Co-generation plant, other power distribution plant

Maintenance of Emergency generation plant (installed in atomic power generating plants)

Maintenance / Installation / Repair of Air conditioning equipment

Manufacture / Installation of order-made machinery

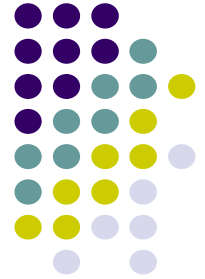
Container repair / Maintenance / Inspection

Technical service





IV. Our business details



3. Reefer Group

Marine reefer container & freezer equipment

Maintenance / Inspection / Repair of marine reefer container.

(Reefer unit and control equipment)

Maintenance / Repair of marine use refrigerator, air conditioner.

Remodeling work for marine reefer container. (power-saving, silencer, etc.)

Sales of new & used reefer containers for shore use.

Technical service & Parts distribution





V. Contact details



H.Q. / Sales division

Tel : +81-45-290-6085

Fax : +81-45-290-3317

E-mail : **sales@boltech.co.jp**

★★ Thank you for your time and attention. ★★