



Plastic Pipe Transits

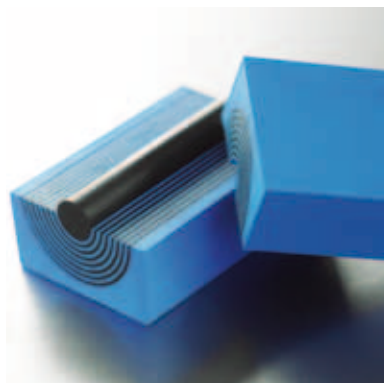


We Seal Your World™



Stopping both fire and water

Roxtec provides flexible sealing solutions for plastic pipes. With our plastic pipe transits, you ensure safety, operational reliability and a good return on your investment.



Certified safety

Our sealing system for thermo-plastic piping is developed for constructions, such as decks and bulkheads. It ensures certified protection against risks caused by fire, smoke, gas or water pressure in accordance with official regulations and safety demands.

Reducing costs

Ship owners, ship builders and other contractors who want to

use plastic pipes appreciate the excellent fire protection and unique fire-stopping feature of our system. It facilitates the option to use plastic pipes, meaning lighter vessels, fuel-savings, less corrosion and reduced need for maintenance. Choosing Roxtec plastic pipe transits is a safe way of reducing the total cost.

- Flexible solutions
- Certified protection
- Developed for plastic pipes

Easy installation

Roxtec seals are extremely safe and easy to use. Thanks to the smart adaptability to different sizes of pipes, you can speed up installation.



Multidiameter™ by Roxtec

Our unique technology, based on seals with removable layers, allows adaptability to a wide range of different sizes of plastic pipes. You just peel off layers until the seal fits.

Efficient fire-stopper

Our seals are equipped with a fire-stopping material. In case of fire and melting pipes, it expands and makes sure that the fire does not spread

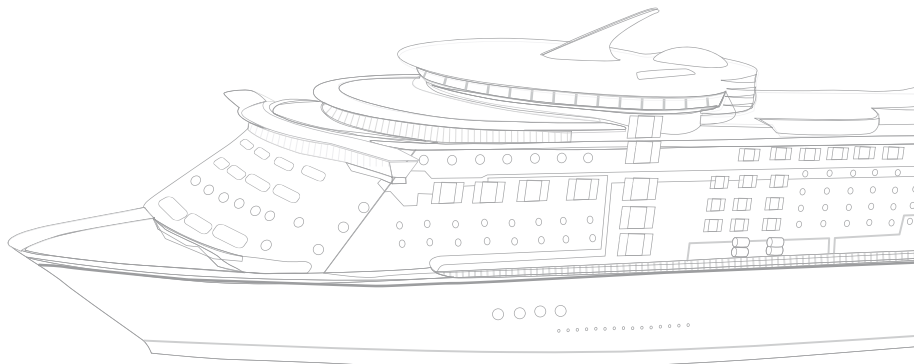
through the opening. Our solution makes it safe to choose plastic pipes.

Approved protection

Roxtec transits are approved for fire protection in A-class bulkhead and deck divisions. The sealing capacity is approved for 4 bar water pressure and 2 bar helium gas pressure. The transits are certified for use with thermoplastic pipes of a variety of materials and sizes.

Features

- Fire-stopper
- Watertight and gas-tight
- Easy to inspect on site
- Multidiameter™



Roxtec RS PPS/S

Single-side seal



Installation from one side

The Roxtec RS PPS/S is a single-side seal for various thermoplastic pipes for openings in constructions like decks and bulkheads. The seal provides protection against fire, smoke and water. In case of fire, the penetration is blocked.

Compact and light weight

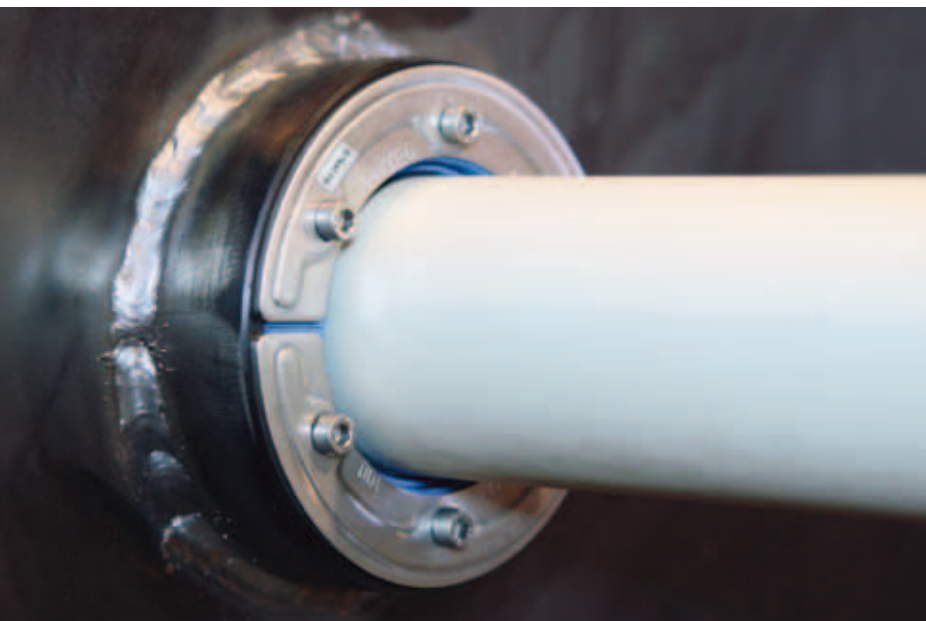
The small size of the seal and the short sleeve make the solution very compact and help minimizing the weight of the construction. The sleeve is welded or bolted to the steel division. The RS PPS/S is then inserted into the sleeve around the pipe.

RS PPS/S seal, with core, acid proof stainless steel fittings

Seal	Art. No.	For plastic pipe		For use with following sleeve:
		(mm)	(in)	
RS PPS/S 31 AISI 316	PPSS000003121	0+4-17	0+0.157-0.669	SLRS 31
RS PPS/S 43 AISI 316	PPSS000004321	0+4-23	0+0.157-0.906	SLRS 43
RS PPS/S 50 AISI 316	PPSS000005021	0+8-30	0+0.315-1.181	SLRS 50
RS PPS/S 68 AISI 316	PPSS000006821	0+26-48	0+1.024-1.890	SLRS 68
RS PPS/S 75 AISI 316	PPSS000007521	0+26-48	0+1.024-1.890	SLRS 75

RS PPS/S seal, without core, acid proof stainless steel fittings

Seal	Art. No.	For plastic pipe		For use with following sleeve:
		(mm)	(in)	
RS PPS/S 100 woc AISI 316	PPSS000010021	48-70	1.890-2.756	SLRS 100
RS PPS/S 125 woc AISI 316	PPSS000012521	66-98	2.598-3.858	SLRS 125
RS PPS/S 150 woc AISI 316	PPSS000015021	93-119	3.661-4.685	SLRS 150



Saving time

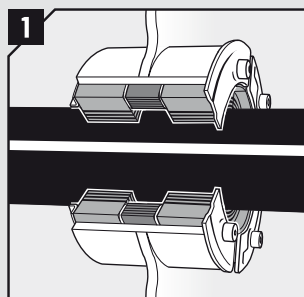
Plastic pipes are easy to handle, and transits like the Roxtec RS PPS/S are developed to simplify and speed up the installation phase even more.

User-friendly

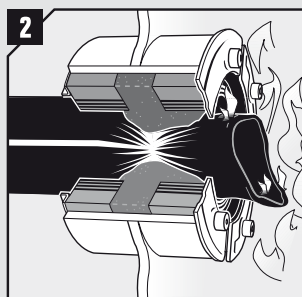
All parts are integrated, and in most cases there is no need for additional insulation. This enables trouble-free installations, and ensures that the special fire-stopping material is properly installed. You eliminate the risk of errors, and the product marking facilitates verification.

How it works

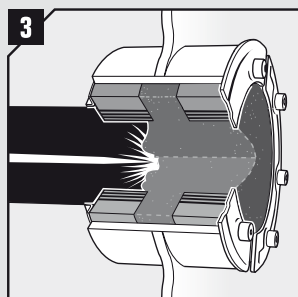
The example shows the RS PPS/S in action. The functionality of the RS PPS and SE PPS seals is fundamentally the same.



The Roxtec RS PPS/S seals around the thermoplastic pipe against leakage of water and gas through the steel division. Inside the seal, we have added a special fire-stopping material.



This material will expand and close the middle void of the pipe whenever exposed to high temperatures, such as during a fire.



Should a fire occur and the plastic pipe start to burn and melt, the opening will close completely to prevent fire and smoke from spreading through the bulkhead or deck.

Roxtec RS PPS

Back-to-back seal



Blocking flames

The Roxtec RS PPS is a back-to-back sealing solution for use with thermoplastic pipes in constructions, such as decks and bulkheads. The seal ensures complete blocking of smoke, flames and water through the opening of the pipe in case of fire.

All in one kit

The Roxtec RS PPS kit consists of two RS seals and one intumescent sealing strip. The seal is approved for a wide range of thermoplastic pipes and intended for use with Roxtec SL PPS sleeves.

RS PPS seal, with core, acid proof stainless steel fittings

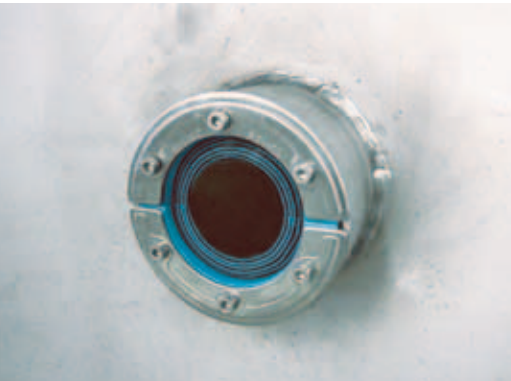
Seal	Art. No.	For plastic pipe		For use with following sleeve:
		(mm)	(in)	
RS PPS 31 AISI 316	PPS0000031021	0+4-17	0+0.157-0.669	SLPPS 31
RS PPS 43 AISI 316	PPS0000043021	0+4-23	0+0.157-0.906	SLPPS 43
RS PPS 50 AISI 316	PPS0000050021	0+8-30	0+0.315-1.181	SLPPS 50
RS PPS 68 AISI 316	PPS0000068021	0+26-48	0+1.024-1.890	SLPPS 68
RS PPS 75 AISI 316	PPS0000075021	0+26-48	0+1.024-1.890	SLPPS 75

RS PPS seal, without core, acid proof stainless steel fittings

Seal	Art. No.	For plastic pipe		For use with following sleeve:
		(mm)	(in)	
RS PPS 100 AISI 316 woc	PPS0000100021	48-70	1.890-2.756	SLPPS 100
RS PPS 125 AISI 316 woc	PPS0000125021	66-98	2.598-3.858	SLPPS 125
RS PPS 150 AISI 316 woc	PPS0000150021	93-119	3.661-4.331	SLPPS 150
RS PPS 175 AISI 316 woc	PPS0000175021	119-147	4.685-5.787	SLPPS 175
RS PPS 200 AISI 316 woc	PPS0000200021	138-170	5.433-6.693	SLPPS 200

RS PPS is available in sizes up to RS PPS 400 for plastic pipes up to 315 mm.

Roxtec sleeves



For a complete solution

The Roxtec plastic pipe seals are to be installed in Roxtec sleeves. The sleeves are developed and designed to make the round Roxtec seal complete and geometrically correct. The shorter sleeves fit the RS PPS/S, while the longer ones are used with the RS PPS back-to-back seal.

The sleeves are also available with a pre-holed flange for attachment by bolting, for example where hot-work is not allowed, or by casting. For information about sleeves with flange, please visit www.roxtec.com

Sleeve	External dimensions		Length		Art. No	
	Ø (mm)	Ø (in)	mm	in		
for RS PPS/S						
SLRS 31	40	1.575	35	1.378	ASL1000310012	ASL1000310021
SLRS 43	52	2.047	65	2.559	ASL1000430012	ASL1000430021
SLRS 50	63	2.480	65	2.559	ASL1000500012	ASL1000500021
SLRS 68	83	3.268	65	2.559	ASL1000680012	ASL1000680021
SLRS 75	89	3.504	65	2.559	ASL1000750012	ASL1000750021
SLRS 100	114	4.488	65	2.559	ASL1001000012	ASL1001000021
SLRS 125	140	5.512	65	2.559	ASL1001250012	ASL1001250021
SLRS 150	164	6.457	65	2.559	ASL1001500012	ASL1001500021
for RS PPS						
SLPPS 31	42	1.654	156	6.142	5ASL000005820	
SLPPS 43	52	2.047	156	6.142	5ASL000005500	
SLPPS 50	60	2.362	156	6.142	5ASL000003416	
SLPPS 68	75	2.953	156	6.142	5ASL000004742	
SLPPS 75	89	3.500	156	6.142	5ASL000003445	
SLPPS 100	114	4.488	156	6.142	5ASL000003519	
SLPPS 125	140	5.512	156	6.142	5ASL000003446	
SLPPS 150	168	6.614	156	6.142	5ASL000003417	
SLPPS 175	185	7.283	156	6.142	5ASL000003769	
SLPPS 200	219	8.622	156	6.142	5ASL000005458	

Roxtec SE PPS

Extension frame

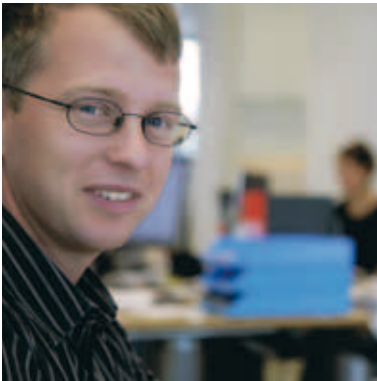


Multi-pipe sealing

The Roxtec SE PPS is an accessory for fire-proof installation of several plastic pipes through Roxtec S/SF type frames. The frames allow several pipes in the same opening and are approved for different plastic materials. S/SF type frames and accessories are ordered separately.

Frame	External dimensions (D=100 mm)		Weight		Art. No.
	HxW (mm)	HxW (in)	(kg)	(lb)	
SE PPS 2x1 galv	195 x 215	7.677 x 8.465	0.8	1.653	5PPSE00003323
SE PPS 2x2 galv	195 x 345	7.677 x 13.583	1.2	2.668	5PPSE00003324
SE PPS 2x3 galv	195 x 476	7.677 x 18.740	1.7	3.704	5PPSE00005088
SE PPS 2x4 galv	195 x 606	7.677 x 23.858	2.1	4.718	5PPSE00005089
SE PPS 3x1 galv	254 x 155	9.999 x 6.102	0.7	1.543	5PPSE00003320
SE PPS 4x1 galv	254 x 215	9.999 x 8.465	0.9	1.984	5PPSE00003325
SE PPS 4x2 galv	254 x 345	9.999 x 13.583	1.5	3.197	5PPSE00003326
SE PPS 4x3 galv	254 x 476	9.999 x 18.740	2.0	4.431	5PPSE00003327
SE PPS 4x4 galv	254 x 606	9.999 x 23.858	2.6	5.644	5PPSE00005090
SE PPS 5x1 galv	312 x 155	12.283 x 6.102	1.0	2.094	5PPSE00003321
SE PPS 6x1 galv	312 x 215	12.283 x 8.465	1.1	2.315	5PPSE00003328
SE PPS 6x2 galv	312 x 345	12.283 x 13.583	1.7	3.748	5PPSE00003329
SE PPS 6x3 galv	312 x 476	12.283 x 18.740	2.4	5.181	5PPSE00003330
SE PPS 6x4 galv	312 x 606	12.283 x 23.858	3.0	6.614	5PPSE00003331

We support you globally



Sharing our knowledge

Roxtec is more than a supplier. Our sales and support staff around the world help customers find their optimal solution. Our knowledge, acquired through years of work in the field, enables us to guide you to a solution that suits your needs.

We help ensure quality

Our extensive R&D resources, with design and engineering departments as well as labs for advanced tests, give us the opportunity to continuously develop and improve our products, services and solutions. We provide tests, certificates and documentation for transferring knowledge within your organization.



Installation training

To ensure the correct use of our system, we also provide product installation training on site. At our website, www.roxtec.com, we have collected useful information for staff involved in the assembly and installation of the Roxtec sealing system. Instructions and videos can be viewed or downloaded for free.

The world's most available modular seal

Roxtec solutions are available worldwide through our network of local suppliers. This means fast deliveries from local stocks in more than 70 markets. It also means direct support from local staff on site.



Among our customers are:

Aker Yards, Benetti, Carnival Cruise Corporation, Daewoo Heavy Industries, Dalian Shipyard, Fincantieri, HDW, Hyundai Heavy Industries, Jinling Shipyard, Mitsubishi Heavy Industries, Perini Navi, Royal Caribbean Cruise Line, Samsung Heavy Industries, UK Navy, US Navy.

Let us be your supplier



Sweden, Roxtec International AB, HQ
Phone +46 455 36 67 00

**Argentina, INGIAR
Representaciones SRL**
Phone +54 11 4772 7262

Australia, Macwil Roxtec Pty. Ltd
Phone +61 2 9708 0055

Belgium, Roxtec b.v.b.a/s.p.r.l
Phone +32 9281 1233

Brazil, Roxtec Latin-America Ltda
Phone +55 11 3032 3198

Chile, FACOR Ltda
Phone +56 2 7179480

**China, Roxtec International Trading
(Shanghai) Co. Ltd**
Phone +86 21 6841 9977

Czech Republic, Roxtec CZ s.r.o
Phone +420 284 821 420

Denmark, Roxtec ApS
Phone +45 4918 4747

Finland, Roxtec Finland Oy
Phone +358 9 565 5090

France, Roxtec France
Phone +33 1 45 61 08 30

Germany, Roxtec GmbH
Phone +49 40 657 398 0

**Hungary, Glob-Prot Trade and
Service Ltd**
Phone +361 339 8604

India, Roxtec India Pvt Ltd
Phone +91 12 44 006 141

Italy, Roxtec Italia S.r.l
Phone +39 029590121

Japan, Roxtec Japan K.K.
Phone +81 3 4550 0730

Lithuania, SWELBALT
Phone +370 46 300 100

Mexico, MEXIROX, S.A. de CV
Phone +52 58 818863

the Netherlands, Roxtec BV
Phone +31 341 426395

**Nigeria, Structured Resource
Business Ltd**
Phone +234 1 724 5276

Norway, Roxtec AS
Phone +47 6787 0850

Poland, Pionet Sp. z o.o
Phone +48 58 622 02 08

Portugal, Glacis, LDA
Phone +351 21 297 36 37

Russia, Roxtec RU
Phone +7 495 221 62 20

**Singapore, Finessco Engineering
PTE Ltd**
Phone +65 6862 3200

**South Africa, Roxtec Africa
(PTY) Ltd**
Phone +27 11 482 0088

South Korea, Roxtec Korea
Phone +82 51 314 9787

**Spain, Roxtec Sistemas
Pasamuros S.L.**
Phone +34 916 882 178

Switzerland, Agro AG
Phone +41 62 889 47 47

UAE, Roxtec Middle East F.Z.E
Phone +971 4 8839655

UK, Ireland, Roxtec Ltd
Phone +44 161 7615280

USA, Canada, Roxtec Inc
Phone 800 520 4769,
+1 918 254 9872

For markets in Algeria, Croatia, Egypt, Greece, Iran, Israel, Kazakhstan, Oman, Pakistan, Peru, Qatar, Saudi Arabia, Taiwan and Turkey, please find contact information at www.roxtec.com



Roxtec International AB
Box 540, 371 23 Karlskrona, SWEDEN
PHONE +46 455 36 67 00, FAX +46 455 820 12
EMAIL info@roxtec.com, www.roxtec.com