



**antti**

# DOORS FOR THE FINEST SHIPS IN THE WORLD

You'll  
see the  
difference



**Ehinge**

*Shift your doors to the digital era*



## **YOUR ENTRY INTO THE WORLD OF DETAILED DOOR QUALITY**

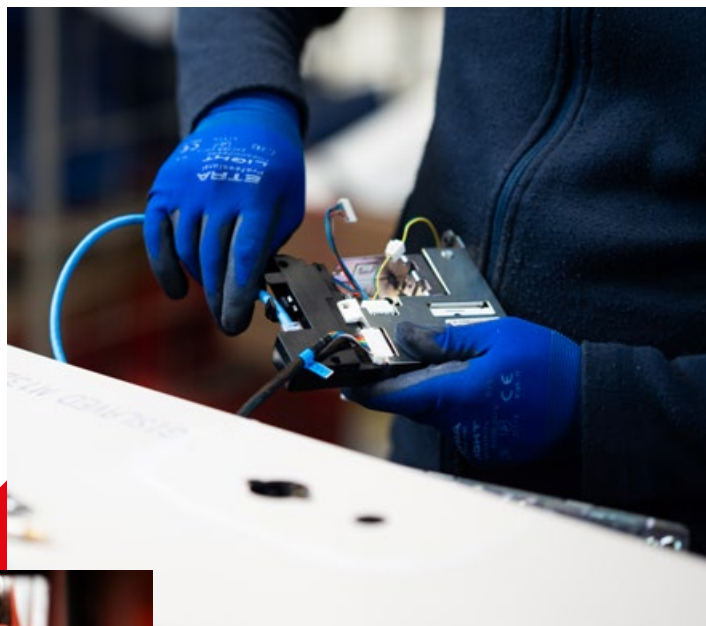
**Antti knows, designs, and manufactures steel ship doors better and more comprehensively than anyone else. During over 30 years in business, we have supplied about half a million ship doors for over 360 different ships. Our clientele includes some of the biggest shipping companies in the world.**

**What's behind our success? The right attitude and professionalism. Our services are based on understanding and listening to the customer's requests, a skilful production process, a delivery chain that is reliable and works smoothly and the ability to work quickly and on the customer's terms.**



## YES, WE'LL HANDLE IT!

Antti has been designing and manufacturing high quality metal products in Finland from the early 1950s and ship doors from the early 1990s. All this knowhow facilitates the delivery of **fire safe, soundproof, easy to install, functional, durable, and stylish** steel ship doors – all within budget and schedule.



## DONT WORRY, IT'S AN ANTTI DOOR

For a passenger, a door creates impressions even before entering the cabin. For a ship, a quality door means a smooth flow of daily operations. For a shipbuilder, a lousy unsuitable door can be a huge issue. Antti handles all sides of ship door manufacturing – classy outlook, efficient operation and superb installability.

When you are starting a new project, contact us at the very beginning. Together we can develop the cost-effectiveness, design, sustainability, and connectivity of your doors.



Antti door onboard **P&O Iona**

# ANTTI'S CUSTOMERS TEND TO SLEEP WELL

**A cruise ship, or even a smaller ship, needs a surprisingly large number of doors. Our deliveries typically consist of thousands of tailor-made door solutions. We manufacture cabin, suite, interior, connecting, bathroom, pantry, and maintenance doors for all kinds of vessels.**

Low maintenance needs and high-quality component materials ensure that our doors are durable, practical, and reliable. Our completely lubrication-free hinges, which can be adjusted in two dimensions, are a good example of our own innovations.

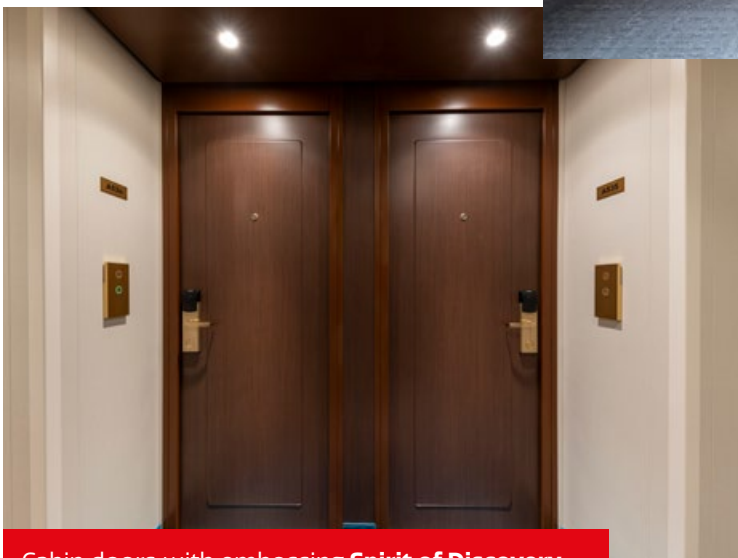
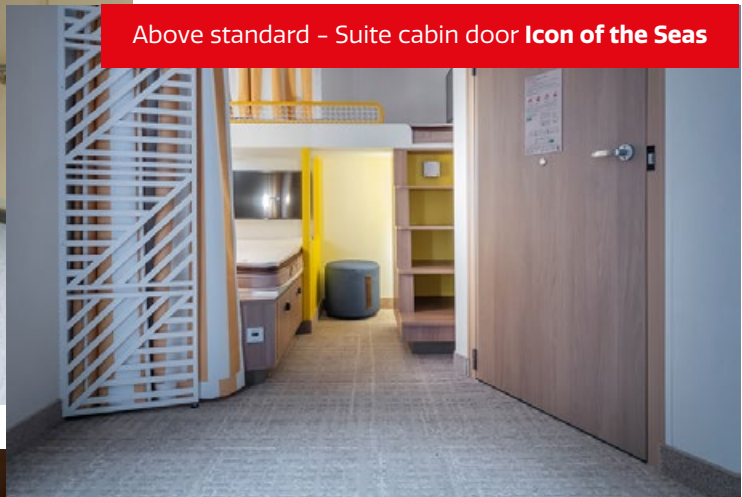
Antti is a reliable choice for the customer, and a partner that will always find the best solution and make deliveries on time. We do not guess – we find out. And we always keep our promises. The doors will arrive to the shipyard or cabin manufacturer exactly on the agreed date.

Interior fire door with ventilation **Carnival Jubilee**



**We manufacture cabin, suite, interior, connecting, bathroom, pantry, and maintenance doors for all kinds of vessels.**

Above standard – Suite cabin door **Icon of the Seas**



Cabin doors with embossing **Spirit of Discovery**

Communication door  
**Carnival Jubilee**





SUITE  
HARALD ULRIK  
SVERDRUP

9  
0  
2





## We proudly present OUR REFERENCES

See more: [anttimarine.fi/references](https://anttimarine.fi/references)



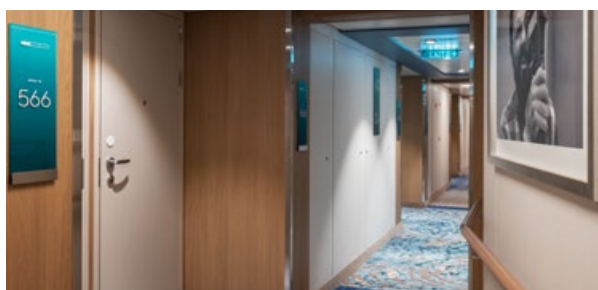
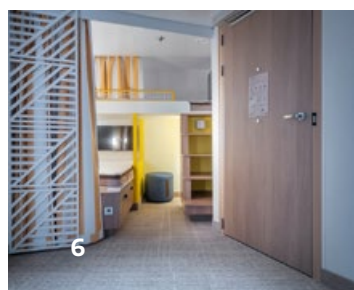
**Icon of the Seas** bidding farewell to the yard.

## ICON OF THE SEAS

Icon is the biggest cruise ship ever built

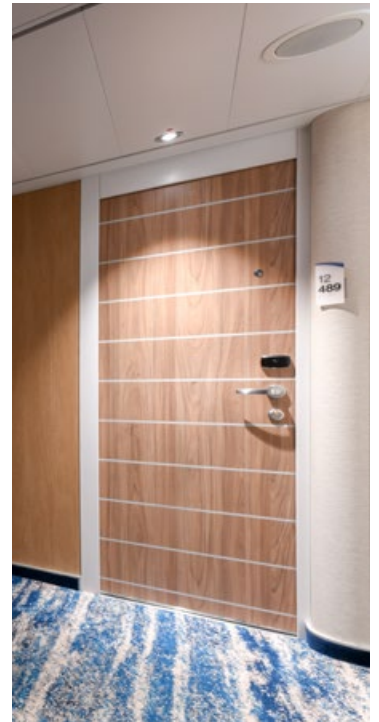
The first ship in the world equipped with **online cabin doors featuring e-hinges**

Total amount of delivered doors was almost 5,000





**Carnival Marde Gras** navigating through the Finnish archipelago



## MARDI GRAS

Mardi Gras is the largest ship in Carnival Cruise Line's fleet

Suite doors, passenger cabin doors and crew cabin doors

Total amount of delivered doors was 4,250



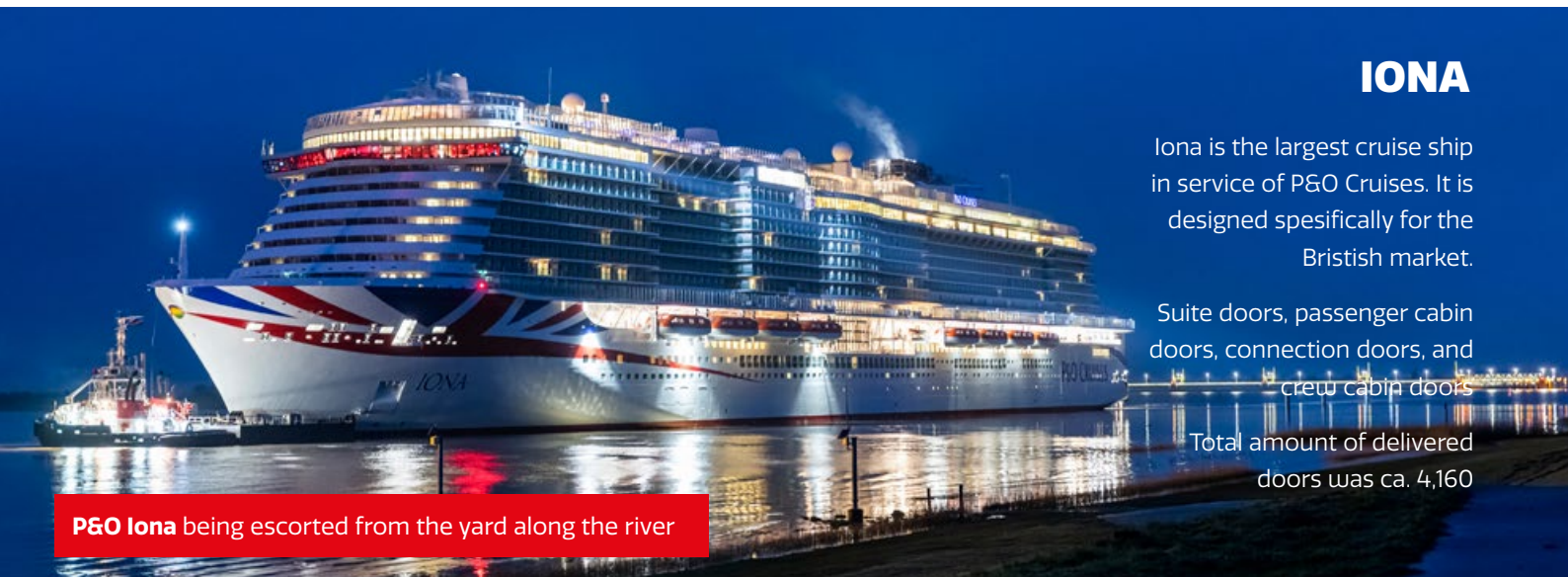
## IONA

Iona is the largest cruise ship in service of P&O Cruises. It is designed specifically for the British market.

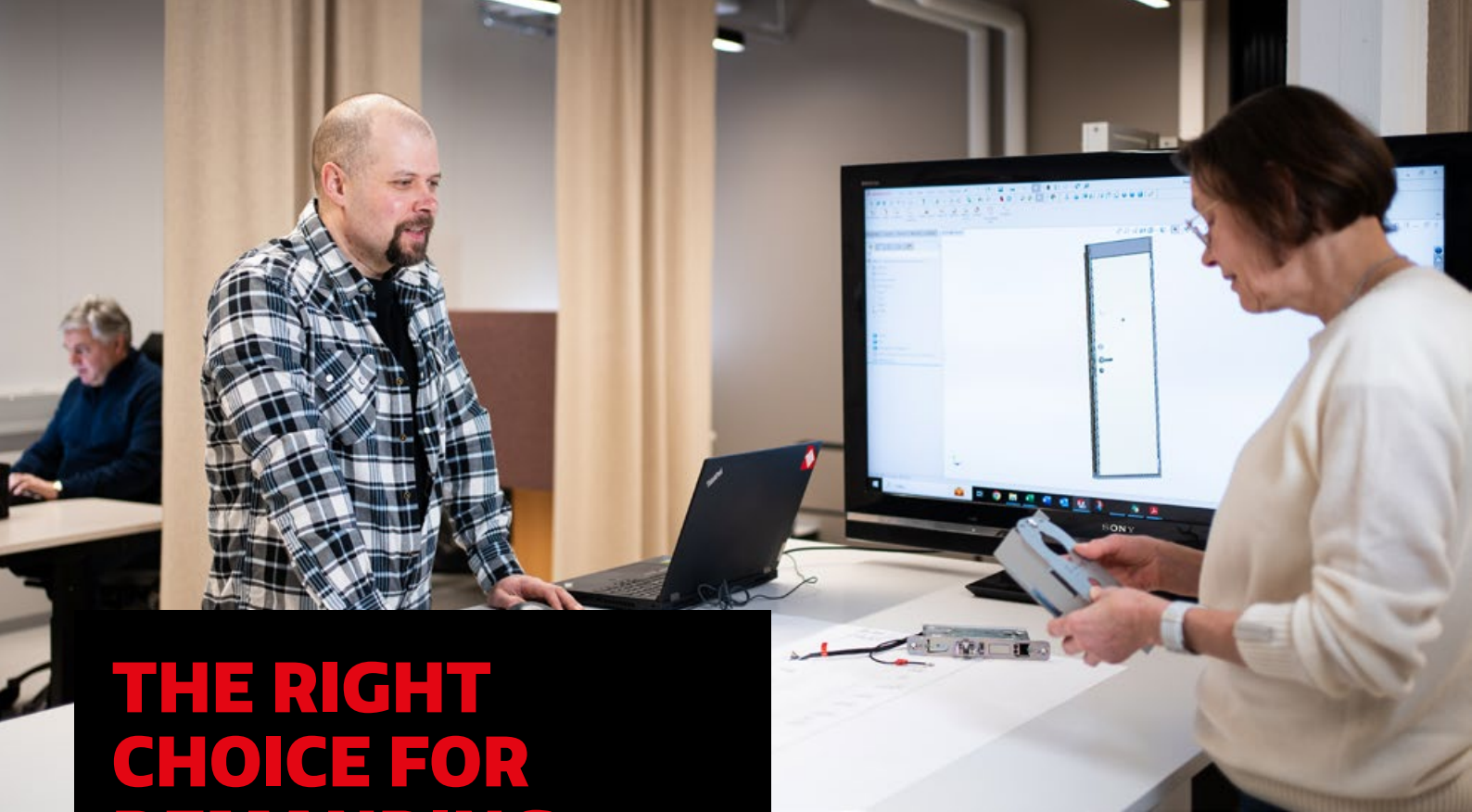
Suite doors, passenger cabin doors, connection doors, and crew cabin doors

Total amount of delivered doors was ca. 4,160

**P&O Iona** being escorted from the yard along the river



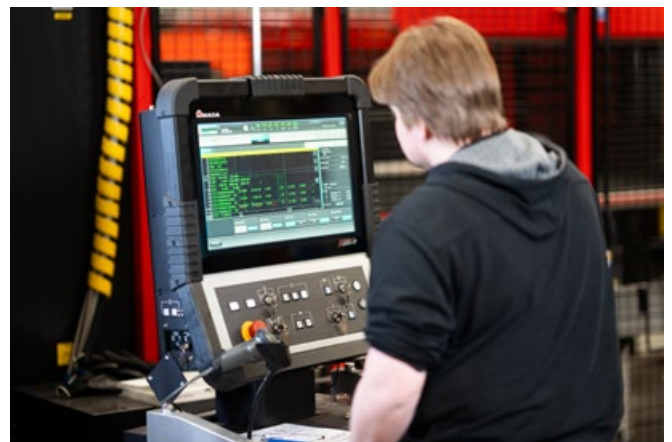




## THE RIGHT CHOICE FOR DEMANDING CUSTOMERS

Antti ship doors are used on the one hand by passengers looking for luxurious and memorable experiences, and on the other hand by inhabitants of LQ modules working in the middle of storms on the northern seas. The doors are always tailor-made and designed to meet the requirements of extremely challenging customers and environments.

Our doors work just as well in the cold of the North and the heat of the Tropics. They fit tightly. They protect, insulate, and increase comfort. All insulations and seals we make meet high quality standards. **Our experience, best materials and dedicated design services guarantee well-fitting doors with excellent sound insulation properties.**



Craftsmanship and the latest technology work closely together in Antti Marine's production.





## THE KEY FACTORS THAT IMPACT THE SUCCESS OF DOOR DELIVERIES

Placing an order for ship doors may seem like a simple matter at first, but a **door delivery can include dozens of little details, like for example the handing of the doors** (left-hand or right-hand). All these details must be specified so that you get exactly the doors you want and to ensure that the delivery and installation go as planned.

What are the nine key factors in door delivery planning?

[anttimarine.fi/why-antti/tips-for-offer-request/](https://anttimarine.fi/why-antti/tips-for-offer-request/)

## KEEP YOUR DOORS ORIGINAL WITH ANTTI SPARE PARTS

To keep your used ship doors functioning as designed, Antti Marine offers a large variety of spare parts. To make ordering easier we have listed the most common ones on our website.

[anttimarine.fi/products/spare-parts/](https://anttimarine.fi/products/spare-parts/)



# Ehinge

**REPLACES  
LOOSE DOOR  
CABLES**



e-hinges onboard **Icon of the Seas**  
on all guestroom entrance doors



The e-hinge is an invisible ethernet cable system at sea. Traditional systems leave the online cabling exposed when the door is open, making it vulnerable to damage.

**Antti's innovation means the cabling between the door leaf and the door frame is implemented with an e-hinge. Smart, functional, and safe.**

**Watch the video:**

[anttimarine.fi/products/e-hinge](https://anttimarine.fi/products/e-hinge)



# LAST BUT NOT LEAST, SAFETY

Safety, in its broadest sense, is a ship door's most important attribute. Safety is achieved by choosing the correct materials and details and adding a little ingenuity. All doors made by Antti are tested according to IMO's FTPC protocol. They are also certified according to Marine Equipment Directive modules. Our doors are naturally rated in fire-proofing classes B and C.

## *Approved quality*

### **MARINE EQUIPMENT DIRECTIVE (MED)**

- Regulation (EU) 2023/1667
- item No. MED/3.16. SOLAS 74 as amended, Regulation II-2/9, IMO 2010 FTP Code and IMO MSC.1/Circ.1511, IMO MSC.1/Circ.1319 and following the provisions of Directive 2014/90/EU

### **TYPE APPROVALS**

- IMO 2010 FTP Code Part 3
- Notified Body DNV-GL 0575

### **USCG APPROVAL**

- agreement between the United States of America and EEA EFTA states on the Mutual Recognition Agreement (MRA) of certificates of conformity for marine equipment

### **SOUND INSULATION**

- ISO 10140-2:2010, ISO 717-1:2013





Antti-Teollisuus Oy, established in 1952, is a family-owned engineering company with about 130 employees.

Alongside ship doors, Antti also develops and manufactures grain processing technology.

Antti Marine provides 40% of the doors for the large ocean liners of the world.

**If there is a company dedicated to ship doors, that company is Antti.** Our doors are always open to you: contact us and see how well and quickly we fulfil our promises in practice. Let's find solutions together.

# LET'S OPEN THE DOORS FOR CO-OPERATION

## **ANTTI-TEOLLISUUS OY**

### **Antti Marine, Sales and production**

Koskentie 89,  
FI-25340 KANUNKI  
Finland

### **Markko Takkinen**

Commercial Director, Sales

[markko.takkinen@antti.fi](mailto:markko.takkinen@antti.fi)

**Tel.** +358 44 774 4735



**anttimarine.fi**