

# **MEASUREMENT TOOLS**

**SOUNDING TAPES**

PH: 954-641-7840 FAX: 954-641-7850

**STAINLESS STEEL SOUNDING TAPE**

High quality oil gauging tapes.  
All tapes have dual graduation and comes complete with flat bottom brass bob.

<u>PART #</u>	<u>SIZE</u>	<u>ISSA #</u>
<b>60 032</b>	15 mtr/50 ft.	65 08 76
<b>60 033</b>	20 mtr/66 ft.	65 08 77
<b>60 034</b>	30 mtr/100 ft.	65 08 78

**BLACK STEEL SOUNDING TAPE**

High quality oil gauging tapes.  
All tapes have dual graduation and comes complete with flat bottom brass bob.

<u>PART #</u>	<u>SIZE</u>	<u>ISSA #</u>
<b>60 035</b>	15 mtr/50 ft.	65 08 66
<b>60 036</b>	20 mtr/66 ft.	65 08 67
<b>60 037</b>	30 mtr/100 ft.	65 08 68

**WHITE STEEL SOUNDING TAPE**

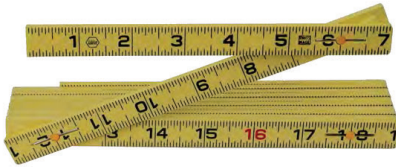
High quality oil gauging tapes.  
All tapes have dual graduation and comes complete with flat bottom brass bob.

<u>PART #</u>	<u>SIZE</u>	<u>ISSA #</u>
<b>60 038</b>	20 mtr/66 ft.	65 08 57
<b>60 039</b>	30 mtr/100 ft.	65 08 58

**RULES****BRASS SOUNDING ROD**

A graduated square jointed folding brass rod with attached ring.

<u>PART #</u>	<u>SIZE</u>	<u>ISSA #</u>
60 025	1 mtr/39"	37 03 09

**FOLDING RULES**

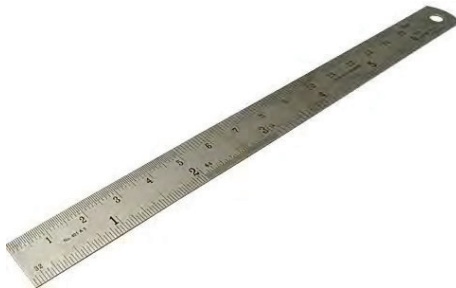
Brass springs, dual graduation.

<u>PART #</u>	<u>SIZE</u>	<u>ISSA #</u>
60 263	1 mtr Aluminum	65 08 11
60 264	2 mtr Aluminum	
60 265	1 mtr Fiberglass	65 08 12
60 266	2 mtr Fiberglass	

**BRASS SLIDE CALIPER**

Engraved graduation. Dual scale mm/inch.

<u>PART #</u>	<u>SIZE</u>
60 212	0-100mm/0-4"

**STAINLESS STEEL RULES**

Flexible steel, dual graduation.

<u>PART #</u>	<u>SIZE</u>	<u>ISSA #</u>
60 267	150mm/6"	65 08 01
60 268	300mm/12"	65 08 02
60 269	600mm/24"	65 08 03
60 270	1000mm/39"	65 08 04

**TAPE MEASURES**

PH: 954-641-7840 FAX: 954-641-7850

**TAPE MEASURES**

ABS case with lock, clip and strap.  
Dual graduation.

<u>PART #</u>	<u>LENGTH</u>	<u>WIDTH</u>	<u>ISSA #</u>
<b>60 226</b>	3.5 mtr./12 ft.	13mm	65 08 27
<b>60 227</b>	5 mtr./16 ft.	16mm	65 08 28
<b>60 224</b>	7 mtr./25 ft.	19mm	
<b>60 223</b>	10 mtr./33 ft.	25mm	

**STEEL TAPE MEASURES**

Enamel yellow steel tape  
ABS case with strap, plastic lever for rewind

<u>PART #</u>	<u>SIZE</u>	<u>ISSA #</u>
<b>60 228</b>	10 mtr./33 ft.	65 08 36
<b>60 229</b>	20 mtr./66 ft.	65 08 37
<b>60 230</b>	30 mtr./100 ft.	65 08 38

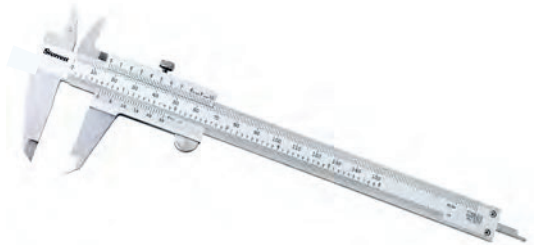
**FIBERGLASS LINEN TAPE MEASURES**

Linen tape in ABS case, dual graduation.

<u>PART #</u>	<u>SIZE</u>	<u>ISSA #</u>
<b>60 237</b>	20 mtr./66 ft.	65 08 32
<b>60 239</b>	30 mtr./100 ft.	65 08 33
<b>60 240</b>	50 mtr./165 ft.	65 08 34

## CALIPERS

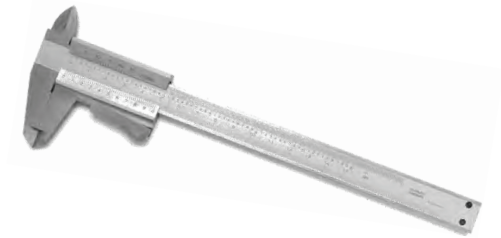
PH: 954-641-7840 FAX: 954-641-7850



### VERNIER CALIPERS

Stainless Steel Vernier calipers with fine adjustment.  
Hardened steel, complete with case.  
Measures inside, outside, and depth.  
Guaranteed accurate. With satin chrome scale.

<u>PART #</u>	<u>SIZE</u>	<u>ISSA #</u>
60 210	0-100mm/4"	65 05 01
60 200	0-160mm/6"	65 05 11
60 201	0-200mm/8"	65 05 12



### VERNIER CALIPERS W/THUMB LOCK

Fully hardened stainless steel construction.  
Satin chrome finish. Micro-fine black graduations.  
Direct reading for inside, outside and depth.  
All measuring surfaces are precision ground and lapped.

<u>PART #</u>	<u>SIZE</u>
60 202	0-150MM/6" with thumb lock



### H.D. VERNIER CALIPERS

Stainless steel vernier caliper with fine adjustment & locking screw. Satin chrome finish.  
All calipers read .001 inch and 1/50mm.  
Longer jaws permit greater accessibility of larger work pieces.  
Accuracy meets U.S. Federal specifications

<u>PART #</u>	<u>SIZE</u>	<u>ISSA #</u>
60 203	0-300mm/0-12"	65 05 13
60 204	0-600mm/0-24"	65 05 17
60 205	0-1000mm/0-40"	65 05 08



### DIAL CALIPERS

Stainless steel Precision caliper.  
Covered rack for longer life and chip free operation.  
4-way measurement for outside, inside, depth and step.  
Adjustable dial for easy reading. One revolution.  
Positive lock. Fitted case. Meets DIN 862

<u>PART #</u>	<u>SIZE</u>
60 211	0-100mm/4"
60 208	0-150mm/6"
60 209	0-200mm/8"
60 216	0-300mm/12"

## **CALIPERS**

PH: 954-641-7840 FAX: 954-641-7850



### **ELECTRONIC DIGITAL CALIPERS**

Four-key type: Hold-key, On/Off key, Inch/mm key & Zero key.

Body is hardened stainless steel.

4-way measurement for outside, inside, depth and step.

Thumb roller for moving the slider in smooth increments.

Hold-key can be used for data hold at any position.

Standard SR 44, 1.55V battery included. With fitted case.

Meets DIN 862

<u>PART #</u>	<u>SIZE</u>	<u>ACCURACY</u>
<b>60 206</b>	0-150mm/6"	± 0.001"/ 0,02mm
<b>60 207</b>	0-200mm/8"	± 0.001"/ 0,03mm
<b>60 215</b>	0-300mm/12"	± 0.0015"/ 0,04mm



### **ULTRA SERIES ELECTRONIC DIGITAL CALIPERS**

Three-key Model: Inch/MM, On/Off & Zero

Last measuring position retained when shut off

4-way measurements: Outside, Inside, Depth & Step

Body is hardened stainless steel. With thumb roller. With fitted case.

Automatic shut-off after 5 minutes of non-use

Standard CR-2032(3V) battery included. Meets DIN 86

<u>PART #</u>	<u>SIZE</u>	<u>ACCURACY</u>
<b>60 217</b>	0-150mm/6"	± 0.001"/ 0,01mm
<b>60 218</b>	0-200mm/8"	± 0.001"/ 0,01mm
<b>60 219</b>	0-300mm/12"	± 0.001"/ 0,01mm



### **SPLASH PROOF ELECTRONIC DIGITAL CALIPERS**

Coolant splash-proof, dust-proof and chip-proof

Switch power on/off key. With thumb roller. With fitted case.

Body and measuring is hardened stainless steel. Meets DIN862

Switchable inch/mm. Floating zero. Battery included.

<u>PART #</u>	<u>SIZE</u>	<u>ACCURACY</u>	<u>BATTERY</u>
<b>60 220</b>	0-150mm/6"	± 0.001"/ 0,02mm	SR44/1.55V
<b>60 221</b>	0-200mm/8"	± 0.001"/ 0,02mm	SR44/1.55V
<b>60 222</b>	0-300mm/12"	± 0.001"/ 0,02mm	CR2032/3V



### **VERNIER DEPTH CALIPER**

All **stainless steel** vernier caliper with locking screw

<u>PART #</u>	<u>SIZE</u>	<u>ISSA #</u>
<b>60 231</b>	150mm	
<b>60 213</b>	200mm	65 05 37
<b>60 214</b>	300mm	65 05 39
<b>60 232</b>	1000mm	



## MEASURING GAUGES

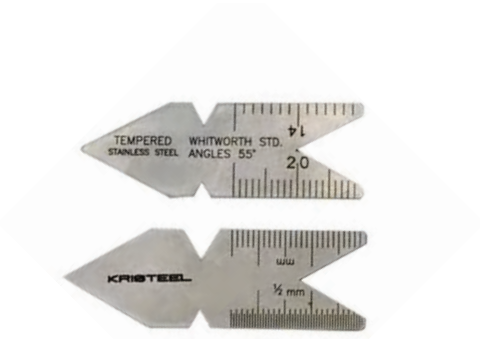
PH: 954-641-7840 FAX: 954-641-7850



### TELESCOPING GAUGE SET

Satin chrome finish, double action for quick checking of inside measurements. Vinyl pouch included.

PART #	RANGE:	O.L.
60 233	5/16-1/2"	4"
	1/2"-3/4"	4-1/2"
	3/4"-1-1/4"	4-1/2"
	1-1/4"-2-1/8"	6"
	2-1/8"-3-1/2"	6"
	3-1/2"-6"	6"



### CENTER THREAD GAUGES

Graduated in 14ths and 20ths on one side and 24ths and 32nds on the other. Micro-fine graduations Whitworth or English Standard 55 Degrees

PART #	RANGE	ISSA #
60 259	Whitworth 55 deg.	65 06 31
60 260	Metric 60 deg.	65 06 33



### SCREW PITCH GAUGES

Correct pitch is determined by matching blade teeth with threaders. Blades protected in sturdy steel case. Each blade clearly marked with proper thread size. Narrow designed blade permits use for internal and external screw threads.

PART #	RANGE	DEGR.	LEAVES
60 085	0.5-1.00mm	60	18
60 089	0.25-2.5mm	60	28
60 090	0.5-7.0mm	60	17
60 086	4-62 TPI/.25-6.0mm	55/60	52
60 087	4-62 TPI BSW	55	28
60 088	8-28 TPI BSP	55	6
60 084	4-84 TPI UNC/UNF	60	51



### FEELER GAUGES

Range: 0.05 - 1.00mm

PART #	LENGTH	ISSA #
60 105	4"	65 05 63
60 106	6"	65 05 64
60 107	8"	
60 108	12"	

**MICROMETERS**

PH: 954-641-7840 FAX: 954-641-7850

**OUTSIDE MICROMETERS**

<u>PART #</u>	<u>RANGE</u>	<u>ISSA #</u>
60 245	0-25mm	65 03 01
60 246	25-50mm	65 03 02
60 247	50-75mm	65 03 03
60 244	75-100mm	65 03 04
60 243	100-125mm	65 03 05
60 242	125-150mm	65 03 06
60 241	150-175mm	65 03 07
60 254	175-200mm	65 03 08
60 248	200-225mm	65 03 09
60 261	225-250mm	65 03 10
60 249	250-275mm	65 03 11
60 262	275-300mm	65 03 12
60 275	300-400mm	65 03 84
60 250	400-500mm	65 03 85

**OUTSIDE MICROMETER SETS**

All sets in wooden case.

<u>PART #</u>	<u>RANGE</u>	<u>SET</u>	<u>ISSA #</u>
60 271	0-100mm	4-pc	65 03 81
60 272	0-150mm	6-pc	65 03 82
60 274	0-300mm	10-pc	
60 273	150-300mm	6-pc	65 03 83

**INSIDE MICROMETER SET**Accuracy DIN 963, reading 0,01mm  
with extension rods in wooden case.

<u>PART #</u>	<u>RANGE</u>	<u>ISSA #</u>
60 251	50-175mm	65 04 41
60 253	50-250mm	65 04 42
60 252	50-600mm	65 04 43



**INDICATORS/ TESTERS**

PH: 954-641-7840 FAX: 954-641-7850



**PRECISION DIAL INDICATOR**

Rack & contact point made of hardened stainless steel. Jeweled movement.  
Lug back. Stem dia. 8mm  
50mm diameter dial face. 0.01mm graduation.

<u>PART #</u>	<u>RANGE</u>	<u>ISSA #</u>
<b>60 276</b>	0-5mm	
<b>60 255</b>	0-10mm	65 14 03
<b>60 257</b>	0-20mm	
<b>60 256</b>	0-30mm	



**UNIVERSAL DIAL INDICATOR STAND**

Universal magnetic base with 3-D rigid steel arm movement. Unique central locking mechanism.  
Fine adjustable. On/Off switch.  
Super power pull 130 lbs.  
Base Dimension: 2" (Width) x 2-1/2" (Depth)  
Supplied without dial indicator.

<u>PART#</u>	<u>ARM</u>	<u>BASE</u>
<b>60 258</b>	9"/230mm	2 x 2-1/2"
<b>60 083</b>	7.5"/190mm, Mini	1.2 x 1.5"



**FLEXIBLE ARM MAGNETIC STAND**

Permanent magnet with On/ Off switch control.  
Cam lever operates cable. Locks it rigid at any desired position. Cable tension adjustable. 12" Stem flexes full 360°, Power Pull: 130 lbs.

<u>PART#</u>	<u>ARM</u>	<u>BASE</u>
<b>60 082</b>	12"/300mm	2 x 2-1/2"



**CRANKSHAFT DISTORTION DIAL GAUGE**

An inside gauge for checking the distortion of webs on crankshafts. With these gauges it is possible to check bearing alignments or deflections of the shaft without having to dismantle the engine. Indicator; 0.01mm graduation

<u>PART#</u>	<u>SIZE</u>
<b>60 081</b>	100 to 500mm, 85 to 300mm ISSA 652670



**MAGNETIC STICK TESTER**

For testing solenoid valves, relay coils and hydraulic or pneumatic systems without having to shut them down.  
Suitable for AC and DC current.

<u>PART#</u>	<u>DESCRIPTION</u>
<b>60 010</b>	150 mm

**CALIPERS**

PH: 954-641-7840 FAX: 954-641-7850

**INSIDE SPRING CALIPER**

<u>PART #</u>	<u>SIZE</u>	<u>ISSA #</u>
60 059	4"	65 01 71
60 060	6"	65 01 73
60 061	8"	65 01 74
60 055	10"	65 01 75
60 062	12"	65 01 76
60 057	18"	
60 049	24"	
60 050	36"	

**OUTSIDE CALIPER**

<u>PART #</u>	<u>SIZE</u>	<u>ISSA #</u>
60 063	6"	65 01 03
60 064	8"	65 01 04
60 076	10"	65 01 05
60 065	12"	65 01 06
60 066	18"	65 01 08

**OUTSIDE SPRING CALIPER**

<u>PART #</u>	<u>SIZE</u>	<u>ISSA #</u>
60 067	4"	65 01 21
60 068	6"	65 01 23
60 069	8"	65 01 24
60 056	10"	65 01 25
60 070	12"	65 01 26
60 054	18"	
60 047	24"	
60 046	36"	

**SPRING DIVIDER**

Made of hardened steel with points that are extra tempered for scriping on iron surfaces.

Has a rigid spring and adjustable, quick setting screw.

<u>PART #</u>	<u>SIZE</u>	<u>ISSA #</u>
60 071	4"	65 02 32
60 072	6"	65 02 34
60 073	8"	65 02 35
60 075	10"	65 02 36
60 074	12"	65 02 37
60 053	18"	
60 058	24"	
60 045	36"	

**SQUARES**

PH: 954-641-7840 FAX: 954-641-7850



**T-BEVEL 8"**

Rust Proof Stainless Steel blade 8", high impact Handle

**60 001** 8" (20 cm) O.L.



**TRI & MITRE SQUARE 8"**

Rust Proof Stainless Steel blade 8", black precision etched scales

**60 002** 8" (20 cm) O.L. blade  
5 1/2" plastic handle with level



**COMBINATION SQUARE 12"**

Rust Proof Stainless Steel blade 12"  
Black precision etched scales  
Durable cast zinc body

**60 003** 12" (30 cm) O.L. blade  
5" cast zinc handle with level



**60 006** 4-Pc set include square head, center head, protractor and blade  
12" blade



**ALUMINUM FRAMING SQUARE 16X24"**

Multiple scales, permanent deep stampings for durability

**60 004** 16" x 24" aluminum blade  
1/8", 1/10", 1/12" and 1/16" scales