



MARINE TECHNICAL SERVICE
ALL OVER MAINLAND OF CHINA
船舶技术服务



青岛龙港船舶工程有限公司
LongKong Marine Engineering Co.,Ltd.

Closer to global owners, Closer to China shipyards, Wherever you are.

公司简介 PROFILE

青岛龙港船舶工程有限公司成立于1998年，总部位于北方重要港口城市青岛，是一家为中外船舶和海洋工程提供各种技术服务和物资供应的综合性公司。公司奉行“诚信经营、标准管理”的经营理念，推行质量、环境、职业健康安全管理体系标准，已取得了挪威船级(DNV)质量管理体系(ISO9001:2008)、环境管理体系(ISO14001:2004)和职业健康安全管理体系(OHSAS 18001:2007)认证证书。

公司拥有正式员工126名，其中本专科以上学历人员100多人，各类专业技术人员占50多名，拥有一批在船舶技术领域经验丰富的船、机、电工程师和管理人才，为六大船舶技术项目提供服务：钢质工程、机械工程、自动化、海事安全、水下工程、计量检测。目前海事安全部取得了LR、DNV、NK等10家船级社消防认可证书；水下工程部取得了LR、DNV、NK等9家船级社水下检验认可证书；计量检测部取得了地方政府授权从事电类、温度、力学类、气体类仪器仪表检验的资质证书；测厚检测服务取得了NK船级社的认可证书，其他船级社的认可工作也正在进行中。公司还成立了独立的物资供应部，为船舶及海洋工程提供物料、备件供应，备件转关，一般贸易等服务。

经过多年的发展，公司服务网络覆盖全国所有港口和船厂，从北到南设有服务站11个：秦皇岛地区、青岛开发区、江苏地区、上海地区、舟山地区、广东地区、广西地区等，各港口都能在接到订单6小时内开展工作。公司为全球数百家船东提供服务，已与国内很多修造船厂建立了合作关系，为其提供技术支持和售后服务。目前年修船量已突破一千艘次。

着眼未来，公司积极夯实船舶技术服务，不断探索公司新兴项目发展。全体龙港人正不断追求卓越，依靠技术进步、创新发展努力打造集团化企业，竭诚为国内外客户提供优质服务。

Longkong Marine Engineering Co., Ltd (LKM) was established in 1998, the head office locates in Qingdao, the very important port city in north China. LKM is a comprehensive company that provides various technical services for marine and offshore engineering, has been accredited and certified by DNV in ISO9001:2008 QMS, ISO14001:2004 EMS and OHSAS 18001:2007.

There are 126 employees in the company including more than 100 high educated persons and more than 50 of whom are professionals. The company owns dozens of engineers and managers skilled in marine Hull, Machinery and Electrical & Electronics. Based on our technology, we provide six types of service as follow: Steel Works, Machinery Works, Automation Service, Marine Safety Service, Underwater Engineering and Gauging & Calibration. The Marine Safety Service has been accredited by 10 Classification societies in Fire Fighting annual service, the Underwater Engineering Service has been accredited by 9 Classification societies for I.W.S service, the Gauging and Calibration Service is authorized the qualification certificate by local Government in Electrical & Electronics, Temperature, Pressure and Gas detection device testing and calibration, Thickness Gauging service has been accredited by NK, other classification accreditation is in progress also. LKM have an independent Supply Division that engages in marine stores and spares supply, marine spare transit and other general trading.

The company's service network covers all the Chinese Mainland ports and Shipyards, we own 11 service stations from north China to south China, such as Qinhuangdao area, Qingdao Development zone, Jiangsu area, Shanghai area, Zhoushan area, Guangdong area, Guangxi area etc, we are able to attend on board in six hours in any port. We service for hundreds of Global ship owners /managers and also cooperate with many New Shipbuilding Yards and Dock Yards in China for technical supports and after service. The company's yearly repairing capacity has already broken through 1000 ships now.

LKM will be in pursuit of excellence to provide excellent service for clients.

青岛龙港船舶工程有限公司

QINGDAO LONGKONG MARINE ENGINEERING CO.,LTD.

主要服务项目 MAIN SERVICE SCOPE

1、钢质工程服务 Steel Works

1) 船舶钢质、铝质工程制造、修理,如: 舱盖、船体、克令吊吊臂、舷梯、管系工程等;

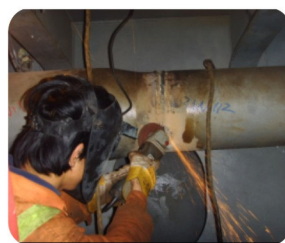
Steel, aluminum material fabricating, repair, such as: hatch cover, hull, crane jib, gangway, various pipes.

2) 拥有经验丰富的船体工艺师、舱盖结构工艺师及多名船级社认证焊工;

With experienced hull technologist, hatch cover structure technologist and plusieurs class accredited welders.

3) 取得船级社钢质和铝质焊接工艺认可: EH36钢板焊接工艺 (LR); DH36钢板焊接工艺(DNV); 铝质和不锈钢管焊接工艺(DNV)。

Class approved welding procedure specification (WPS) for steel and aluminum welding: LR accredited steel WPS (EH36), DNV accredited steel WPS (DH36) and aluminum, S. S pipe WPS.



2、机械工程服务 Mechanical & Hydraulic Service

1) 拥有经验丰富的工程师和技师队伍从事甲板机械、机舱设备修理, 如: 主辅机、泵阀、增压器等;

With practiced engineers and technicians for deck machinery, engine equipments repair/overhauling, such as: windlass, mooring winch, M/E, A/E, pump, valve, Turbocharger.



2) 液压系统及设备检修,如克令吊、锚缆机、舱盖、舵机等; 液压马达、泵、油缸等翻新 (IHI、REXROTH 等品牌均有库存备件, 青岛车间拥有固定式液压试验台); 拥有45吨容量吊重水袋, 提供各类吊车载重试验。

Hydraulic system/equipment repair/overhauling, such as: deck crane, windlass, mooring winch, hatch cover, steering gear control system; hydraulic motor, pump, cylinder overhauling (with IHI/REXROTH spares in stock, fixed hydraulic test platform in Qingdao workshop); loading test for various cargo lift equipments with our water bag (45T).



Closer to global owners, Closer to China shipyards, Wherever you are.

3、自动化工程服务 Automation Service

拥有多名经验丰富的电气工程师从事强电、弱电、气控、液控等设备和系统检修、保养，如主辅机监控报警，主机NABCO气控系统，NAKAKITA控制系统，火警系统，各种液位报警系统，空调冷库系统等（库存REXROTH，NAKAKITA原厂备件）

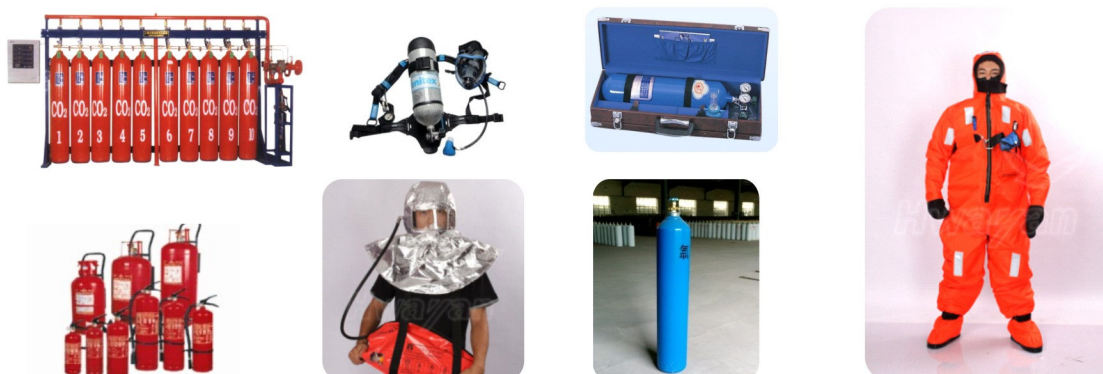
Multiple experienced engineer for electrical/electronic/pneumatic/hydraulic system/equipment repair and maintenance, such as: M/E, A/E monitoring alarm system, M/E pneumatic control system, NAKAKITA control equipments, fire alarm system, various level alarm system, A/C refrigeration system etc. REXROTH/ NAKAKITA genuine repair kits in stock.



4、海事安全服务 Marine Safety Service

消防系统和设备的检验维修服务（已取得DNV、GL、BV、KR、RINA、ABS、NK、LR、RS、IRS共10家船级社认证，青岛和江阴设有船级社认可工作站）及救生艇、救生筏检验协助服务。

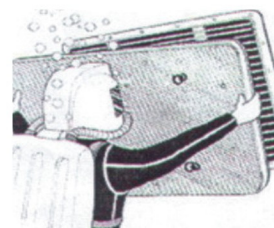
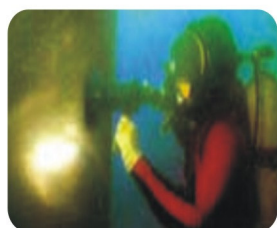
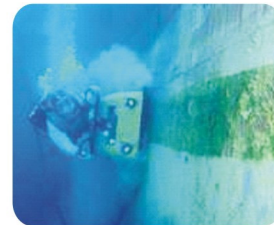
Firefighting system and equipment inspection/ repair (approved by DNV, GL, BV, KR, RINA, ABS, NK, LR, RS, IRS, with DNV approved W/S at Qingdao and Jiangyin) and life boat, life raft inspection assistant service.



5、水下工程服务 Underwater Engineering Service

拥有经验丰富的潜水员队伍，取得DNV、GL、BV、KR、RINA、ABS、NK、LR、RS共9家船级社水下检验证书，拥有各种专业设备，如：液压动力源驱动刮船器、抛光器等，目前主要提供各类船舶水下检验、船体清洁、推进器抛光、水下应急修理等。

With veteran diving team and all kinds of specialty equipments, such as: scraper/ polisher with hydraulic power, waterproofed camera, etc. Service approved by DNV、GL、BV、KR、RINA、ABS、NK、LR、RS for underwater inspection, hull clean, propeller polishing and emergency repair, etc.



6、计量检测服务 Gauging & Calibration Service

1) 从事电类、温度、力学、气体等检测设备校验, 取得青岛质量技术监督局授权;

Calibration for various gauges/meters/calibrators in the range of electrical, temperature, dynamic and gas detecting, service approved by Qingdao Bureau of Quality and Testing Supervision.

2) 舱盖密性检测服务: 拥有SDT密性检测设备2台, 厂家培训的技术员;

Hatch cover UT tightness test, with SDT Sherlog UT device (LR approved) and maker trained technicians.

3) 船体测厚, 获得NK认可, 其它船级社认可正在陆续申请之中;

Thickness gauging service, with experienced technicians and class NK approved, other class approval is in progress.

4) 15PPM 校验协助服务。

15PP calibration assistant service



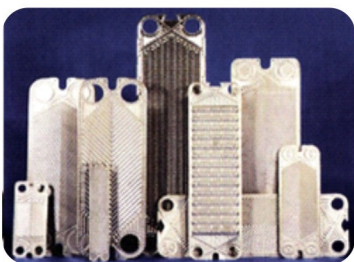
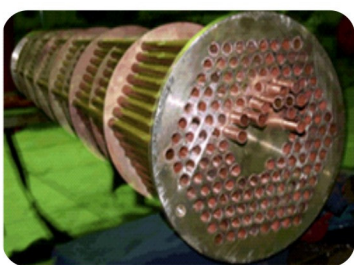
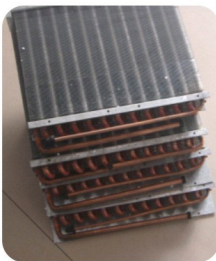
Closer to global owners, Closer to China shipyards, Wherever you are.

7、物资供应服务 Store & Spare Supply Service

IMPA 和 SHIPSERV 会员，提供船舶物料、备件、药品供应，备件转关服务。
目前拥有27名员工，在青岛拥有1500平米仓库，目前主要在北方港口提供服务。



Member of IMPA and SHIPSERV, we can provide store/spare/ medicine supply, spare in transit for clients. Now we own 27 employee, 1500m² warehouse in Qingdao, service scope covers most of the ports/shipyards in north of China.



国内外合作

GLOBAL SERVICE COOPERATION

1、为国内各大船厂提供技术支持及新造船保修服务

Technical support and Guarantee repair for Shipyards in China



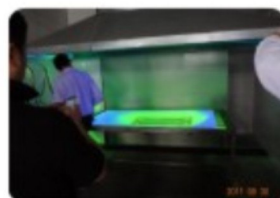
2、代理韩国B-I公司自动化产品，提供销售、安装及维修服务

B-I automatic products sales, installation and after sale service



3、为阿法拉伐提供板式换热器工程业务提供协助服务

Assistant service for ALFA LAVAL PHE business





青岛龙港船舶工程有限公司

LONGKONG MARINE ENGINEERING CO.,LTD.

BUSINESS HEADQUARTERS

地址：青岛市香港中路63号,绿岛花园3-6C 邮编：266071

ADD: 3-6C, Leader Garden, No.63, Hongkong Middle Road, 266071, Qingdao, China

TEL : +86 532 8571 8791/7835 8597 0025/3850

FAX : +86 532 8571 8790

E-mail: info@longkongmarine.com

Url : <http://www.longkongmarine.com>