



Scan Parts trades in spare parts for large seagoing vessels - specialized in parts for the engine room, but also deck parts such as pumps etc.

## Compressor parts

This is one of our strongest areas of supply, where we are able to offer almost any brand at very competitive prices. Our supply will be OEM or high quality replacement parts, where suitable. Please send us your inquiries for spares for:

\* Atlas Copco

\* Hamworthy

\* Carrier

\* Bitzer

\* Hatlapa

\* Sperre

\* Daikin

\* Stal

\* Bock

\* York

\* Sauer

\* Yanmar

\* Tanabe

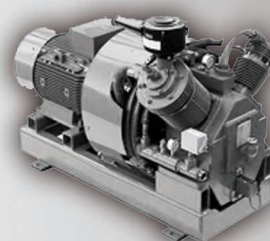
\* Sabroe

\* Zwickauer

\* Cegielski



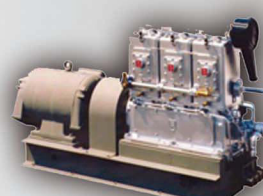
Sperre compressor



Sabroe compressor



Hatlapa compressor



## Pump Parts

We have specialized ourselves in high quality replacement parts in mainly European pump makes, but can also deliver Japanese, Chinese and Korean pumps and parts. Please send us your inquiries for spares for:

\* Alfa Laval Nirex

\* Thune Eureka

\* Houttuin

\* Grundfos

\* Desmi

\* Merser

\* KSB

\* ABS

\* IMO

\* Iron

\* Gothia

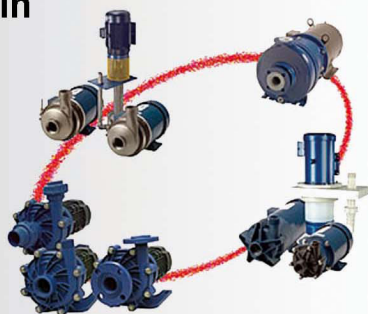
\* Speck

\* Allweiler

\* Taiko Kikai

\* Svanehøj

\* Bornemann



CN - pump



Iron pump



## Engine parts

We cooperate with most European and Japanese engine makers and licensee holders, as well as many high quality replacement engine part dealers around the world. We choose our suppliers from a strict demand for quality products. Major components will always be supplied with class certificates - if required. To mention a few, please send us spare parts inquiries for the following makes:

\* Stork Werkspoor

\* Lister Petter

\* Akasaka

\* Baudouin

\* Bergen

\* Scania

\* Deutz

\* Sulzer

\* Iveco

\* B&W

\* MAN

\* DAF

\* Pielstick

\* MaK

\* Yanmar

\* MTU

\* Cummins

\* SKL

\* Mercedes

\* Hanshin

\* Gotaverken

\* Volvo Penta



Auxiliary engine



Main engine

