



A DNV ISO 9001 : 2015 Certified Company



"A Ship is safe in harbor, but that's not what ships are for"
- William Shedd.





OWS / STP / FWG

- SASAKURA, TAIKO KIKAI, HEISHIN, MIURA, TEIKOKU, ISHII
- JOWA, ILSEUNG, JONGHAP, DONGHWA ENTEC, SHINSHIN
- BLOHM VOSS, DVZ, DECKMA, RWO, OCEAN CLEAN, ALFA LAVAL, EVAC, HAMWORTHY, BECKER, JETS, GERTSEN & OLUFSSEN A/S, SPX FLOW TECHNOLOGY, GEA WESTFALIA
- JIANGSU NANJING, CSSC NANJING LUZHOU MACHINE, NANTONG SHENTONG, HANSUN



AIR STARTER / MOTOR

- UZUSHIO ELECTRIC, JRCS, TERSAKI, NISHISHIBA YANMAR, LINE SEIKI, IPU WORKS, TOYO KEIKI
- SAMGONG, KUH HUNG, KTE, ORIENTAL PRECISION
- AUTONICS, GALI INTERNATIONAL SA, SCHENIDER, INGERSOLL RAND, TDI, BUKH,
- WARTSILA, NORGREN, STARTWELL
- NINGBO HUBAI, HENAN DIESEL, ZJMD MAN B&W



BOILER / IGS / INCINERATOR

- MHI, MIURA, OSAKA BOILER, VOLCANO, TORTOISE, SUNFLAME, NIPPON OIL PUMP, NISHISHIBA, AZBIL-YAMATAKE, SAWADA SEISHAKUSHO
- KANGRIM, GREENS SHAZHOU, ABB GADELIOUS,
- AALBORG, IRON PUMP, SIEMENS, SAACKE, KRAL, WEISHAUPT, IGEMA, OILON
- KASHIWA, MISUZU, HITECH INSTRUEMNTS, NGK INSULATORS
- HYUNDAI HEAVY IND
- ALFA LAVAL, HAMWORTHY, INGERSOLL RAND, BARKER JORGENSEN, ATLAS COPCO, TAMROTOR, SMIT OVENS
- SMC ASIA GAS SYSTEM
- FUJI ELECTRIC
- HMMCO, HYUNWOO, YOUNG, GREEN & CLEAN TECHNOLOGY CO LTD, SUNTEC
- TEAM TEC, ATLAS INCINERATORS, SUNSET, VESTAS A/S, DETEGASA
- ISSC NANJING LUZHOU MACHINE LTD, WUXI LANHAI ELECTRIC, HANSUN



FIRE DETECTION SYSTEM / SPRINKLER SYSTEM

- NIPPON HAKUYO ELECTRONICS, NITTAN COMPANY, NOHMI BOSAI, OKI DENKI BOHSAI, TYCO
- NK CO LTD, SARACOM, SEAPLUS
- AUTRONICA, COONSILIUM SALWICO, TYCO, THORN SECURITY LTD, KIDDE, JOHNSON CONTROLS, SAFETEC



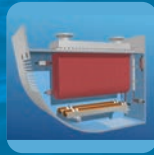
PURIFIERS

- MITSUBISHI KAKOKI KASHIHA
- SAMGONG -MITSUBISHI
- WESTFALIA, ALFALAVAL



GALLEY EQUIPMENTS

- MITSUBISHI CHUKI, SANWA CHURI, WASHIO CHURI KOGYO
- KANGLI FAR EAST PTE LTD, SAMJOO
- ALUMINOX, ECO MARINE, ELECTROLUX, WESCO, METOS MARINE



MGPS / ICCP / ICAF

- NIPPON CORROSION, YOKOHAMA, HIKARI SANGYO, CHUO - KOSAN, CONHIRA
- KC, WILSON WALTON, CRRROTECH KOREA
- CATHELCO, AEGION & CORRPRO, AZIENDA CHIMICA GENOVESE, SAACKE
- SEALANTERN, CATHODIC PROTECTION



CRANES / HATCH COVER / WINCHES / ANCHORS AND CHAINS / HYDRAULIC PUMP AND MOTOR

- NIPPON PUSNES, FUKUSHIMA, MHI, TSUJI, IHI, KAWASAKI, KYORITSU KIKAI, MANABE ZOKI, MACGERGOR, NIKKURA KOGYO, I KNOW, KOEI SANGYO, MANSEI INDUSTRY, SEIGERHARA SEIKAKUSHO, TOBU JUKOGYO
- DONGNAM, ORIENTAL CRANE, TAEKWANG
- DENJET, HATLAPA, LIEBHERR, TTS, HUGGLANDS, SMAG, DENSION HYDRAULIC, DREGGEN CRANE A/S, HS MARINE A/S
- CSSC ZHENJIANG, JIANGYIN XINGCHENG, NANJING WUHAN



PUMPS

- SASAKURA, TAIKO KIKAI, ISHII, NANIWA, TEIKOKU, SHINKO, HEISHIN, TACMINA, EBARA
- SHIN SHIN
- IMO, KRAL, AZCUE, ALLWEILLER, IRON, DESMI, BEHRENS, GRUNDFOS, GARBARANO, TTK, CROTIA PUMP, DBR
- TIANJIN



FILTERS / STRAINERS

- FUJIFILTER, UZUSHIO, KANAGAWA KIKI, MIZUNO, NIKKURA KOGYO
- SAMKUN CENTURY, JOWA AB
- BOLL & KIRCH, FILTREX, DONALDSON, TWIN FILTER, STAY FLOW STRAINER, AURA MARINE, SPX
- ZIBO YONGHUA



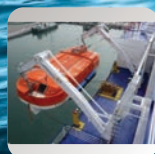
COMPLETE NAVIGATION / COMMUNICATION EQUIPMENT

- OSAKA NUNOTANI, TOKIMEC, YOKOGAWA DENSHIKI, FURUNO, JAPAN RADIO (JRC), TOKYO KEIKI, SANYO DENKI, JRCS, KODEN
- C.PLATH, KOREA MARINE TECHNOLOGY, SARACOM, KOC, SAMYUNG
- CASSENS & PLATH, JOHN LILLEY & GILLIE, RAY MARINE, SIMRAD, SPERRYMARINE, KELVIN HUGHES, RAYTHEON, THALES, SAILOR COBHAM, SAAB, ENRAF, LYNCSO



BWTS

- HITACHI
- PANASIA, TECHCROSS INC, HANLAENS
- DESMI, ALFA LAVAL, GEA, WARTSILA, ECOCHLOR, ERMA FIRST S.A.



LIFEBOAT / RESCUE BOAT / DAVIT / WINCHES

- DAIHATSU, JAPANMARINE UNITED, SEKIGAHARA, NISHI-F CO LTD, TSUNEISHI FORESTRY, IHI MARINE UNITED, TOHATSU, SHIGI
- DONGWOO, HYUNDAI, DAESUNG, ORIENTAL
- BUKH, FASSMER, DAVIT INTERNATIONAL, NORSAFE, SABB, SCHENIDER
- JIANGYIN XINJIANG, QINGDAO BEIHAI, WUXI HAI HONG, ZHENJIANG SIYANG



STEERING GEAR / RUDDER STOCK

- KAWASAKI HEAVY INDUSTRIES, MITSUBISHI, NAGANO KEIKI, TOKYO KEIKI
- YOOWON INDUSTRIES, TONG MYUNG, FLUTEK MARINE
- ROLLS ROYCE, ABB, TENFJORD, HAMWORTHY, HATLAPA, FRYDEN BO, HYDROSTER
- WUHAN MARINE, NANJING HANGZHUAUNG



ELECTRIC MOTOR

- TAIYO, NISHISHIBA, MITSUBISHI ELECTRIC, KYORITSU KIKAI, ONISHI ELECTRIC, YOKOGAWA DENKI
- SAMGONG, HYOSUNG, HYUNDAI
- ABB MOTORS



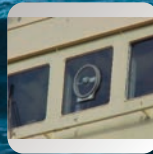
BLOWERS & FAN

- OSAKA, MISUZU
- HYUNDAI, HMMCO, TAE-LI, IL SEUNG, HYOSUNG
- BECKER
- HUDONG, QIYAO POWER SYSTEM, JIANGSU NANJING



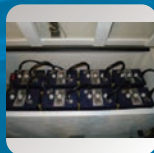
OMD / VISCOSITY CONTROL / FLOW METER / LEVEL SENSORS & THERMOMETER

- DAIHATSU, MEIYO ELECTRIC
- SPECVISION
- SCHALLER AUTOMATION, GRAVINER KIDDE, DECKMA
- AKATUKI SEIKI, AZBIL, NITTO SEIKO, YOKOGAWA, TOKICO
- DAEHO FLOW INSTRUMENTS
- AQUAMETERO, ALFALVAL, AURMARINE, KRAL, VAF INSTRUMENTS
- MUSASINO, SEAMTE, YAMAMOTO, NOHKEN, HYODA INSTRUMENTS, NAKAKITA, NAGANO KEIKI, SAGINOMIYA
- IL SEUNG, PANASIA, JOWA
- ENDRESS & HAUSER, TRAFAG AG
- SHANGAI RONGDE



WINDOW WIPERS & MOTORS

- NIPPON ELECTRIC, HAKUYO KEIKI, OSAKA NUNOTANI
- JUNG -A MARINE
- WYNN MARINE



BATTERIES

- AKATUKI SEIKI, AMCO, JRC, FURUKAWA, TOKICO, FUKUDA, PANASONIC, TOSHIBA, GS-YUASA
- SEUN ELECTRIC
- SCHNEIDER
- JIANGHAI, SIMBO MARINE, WUHAN



HEAT EXCHANGER / PLATE TYPE / SHELL & TUBE TYPE

- YAMASHINA SEIKI, HISAKA WORKS, SHOWA INDUSTRIAL, HARISON SANGYO, OSAKA DENNETSU, KAJIWARA IRON WORKS
- DONGHWA, LHE CO LTD
- SPERRE, ALFALAVAL, SONDENX A/S, SPX FLOW, SWEP, GEA WESTFALIA, APV
- CUMMINS



ENGINES / TURBO CHARGERS / FUEL INJECTION / GOVERNORS / SHAFT GENERATOR

- IHI, MHI, MITSUI ENGINEERING
- STX, DOOSAN
- ABB, MAN DIESEL, KBB
- AKASAKA MITSUBISHI, HITACHI ZOSEN, MAKITA, KAWASAKI MAN B&W, MITSUBISHI HEAVY INDUSTRIES, KOBE DIESEL.
- HYUNDAI MAN B&W
- SULZER, MAN DIESEL TURBO, DEUTZ, CUMMINS, HCP-CEGIEISKI.
- HUDONG, YMD MAN B&W, CSCC-MES DIESEL, CMD MAN B&W.
- DAIHATSU, HANSHIN DIESEL, NIIGATA, DIESEL UNITED
- CATERPILLAR, VOLVO PENTA
- ZJMD MAN CSSC, ANQING DAIHATSU, YICHANG MARINE, SHAANXI DIESEL
- YANMAR, KOBE DIESEL
- SSANGYONG
- MAK



COMPRESSOR (MAIN AIR / BREATHING / DECK AIR / REFRIGERATION)

- TANABE, SUCTION GAS, MATSURBARA, YANMAR, TEIKOKU, AIRMAN, HITACHI, NAMIREI SHOWA, DAIKIN, USHIOREINETSU, SANWA, MITSUBISHI, NISSIN
- JONGHAP-TANABE, HI-AIR KOREA, BUMHAN, MYCOM,
- ATLAS COPCO, SPERRE, SABROE, BAUER, HAMWORTHY, HATLAPA, YORK, BOCK, CARRIER, TAMROTOR, BITZER, GEA, JP SAUER, ALUP, INGERSOLL RAND, COLTRI, DENAIR, DENO, GARDNER DENVER, KAISER, STROMME, ALMIG, H.CEGISLSKI, NEUENHAUSER, JOHNSON CONTROLS
- NANJING



VALVES / PRESSURE CONTROL VALVES

- MISUZU, OKUMURA ENGINEERING, NIKKURA KOGYO, MITSUMOTO VALVE, WADATOKU CORPORATION, NAKAKITA, YUKEN KOGYO, TOMOE VALVE
- ACE VALVE, KEYSTONE, TYCO VALVE, HALLA AUTO VALVE, HANLA IMS, SCAN KOREA, HAE JO INDUSTRIAL, BY CONTROL
- LK VALVES, WORLD VALVES, PLEIGER, BAC VALVES, REXROTH, DAMCOS, DANFOSS, SPIRAX SARCO, SPX FLOW, MM CONTROL
- XIAMEN, NORDIC FLOW



Japan Marine (JMS Group) a Japanese company with a global presence, Now with its offices located in Japan, Korea, Singapore, China, Philippines, India, Bangladesh, UAE, Germany, Turkey & Greece it covers most of the major shipping sectors.

Quality and commitment is a way of life at JMS.

We are DNV ISO 9001: 2015 certified organization. An ISO 9001 :2015 certificate proves that our Quality Management System has been certified against a best practice standard and found compliant. Issued by a third party certification body/registrar, the certificate lets customers know they can trust us and we have implemented the necessary internal processes to meet obligations.

The entry of China and South Korea into Marine Spares trading (traditionally dominated by huge Japanese trading houses) has invigorated the market. With competition now at their heels, the Japanese companies are rapidly adopting to the evolving market changes with innovative strategies, tie-ups and competitive pricing.

JMS focuses on marketing, supplying and distribution of OEM marine spares outside Japan after sourcing them from leading Japanese manufacturers. The manufacturers specialize in fabrication/manufactures/sub-contract spares for various Japanese Marine Equipments. JMS has entered into an exclusive agreement with them to distribute these products as well as the products of other network makers to the worldwide market.

JMS group is managed by professionals with over 30 years of expert experience in the marine industry. With excellent technical, production and sourcing knowledge, Relationships are established over the years with primary manufacturers of components that gives us the edge to deliver value for money to our customers.

With the dedicated back office in Chennai, India which is one of the modern Indian Metro city on coromandal coast, we are able to cut down the operation cost, which eventually is passed on to our clients.

So for us when it comes to Sea, Sky is the limit.



When it comes to the Sea,
Sky is the limit.



Company Overview

No technology in the world can ever replace genuine knowledge and know-how experience and expertise, not to mention energy and enthusiasm. We, Japan Marine Group is an international supplier and exporter of ship equipment & spare parts. We are a customer centric company, committed towards total client satisfaction and constantly monitoring and striving for better client satisfaction. We are not just open around the clock, but we are open to new ways and views of doing business. With JMS Group, you can be sure of getting your spares at it's worth price, with no compromise on quality.

Each member of JMS Group has the experience and expertise to plan, coordinate and ensure the proper handling of your Enquiries, Requests, Orders and Dispatches. We are equipped to instantly and accurately respond to inquiries and provide competitive solutions with the resources to bring real results. Right from enquiry to delivery, our staff are trained to ensure the best of service and conditions for your requirements. Our prompt and personal attention is one of the reasons for sustained partnership with our clients for decades.



Strengths

The commitment guarantee we offer our clients is based on the strength of our company. A strength which is rooted in our structure, in our significant geographic and personalized presence, in our specialization and in our proven independence and loyalty as professionals. Without mentioning, the core strength of JMS Group is its network of joint partnership and partners with special expertise in particular equipment. These joint partnerships assure the customers of qualified and reliable services on a worldwide basis. The joint partnerships supplement us to achieve the primary mission of offering competitive, flexible and reliable international maritime spares supply services that meet the needs of our customers



Vision

Vision achieves extraordinary results.
By expanding and pursuing opportunities whenever we find the right balance between risk and reward. By continuously seeking to improve and differentiate our services to our customers. At JMS Group, we see change not as a threat, but as an opportunity.

We leave no stones unturned in our effort to be customers' preferred partner. To this end, we insist on high ethical standards. We are quick to respond to changes in our customers' needs. Our investment in people, technology and vendors attest to our long-term commitment to our customers. We strive to provide reliable quality services at competitive prices together with a highly qualified and motivated staff to deliver on our promise.



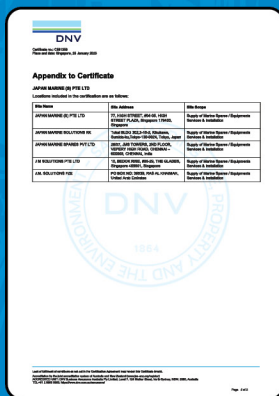
Services

JMS is a one-stop shop for our customers for all their purchase needs for Japanese, Korean & European spare parts. This saves valuable time of our customers & they end up getting a better deal in terms of price with superior quality. Additionally, we have a good logistics set-up & supply chain by which we will be able to supply the goods to any part of the globe within a short notice time.



Network

We have offices strategically located in Japan, Korea, Singapore, China, Philippines, India, Bangladesh, UAE, Germany, Turkey & Greece to co-ordinate & speedup the delivery & to cater various time zones.



Japan : Tokai BLDG 302,3-15-2, Kikukawa, Sumida-ku, Tokyo -130-0024
Tel : +81-3-6801-6785 Fax : +81-3-6801-6786
E-mail : sales@jmsgroup.jp

Korea : 398-4, Gyeongri, Beomseo-eup, Ulju-gun, Ulsan, Korea, 689-852
Tel : +82 52 232 7684 Fax.: +82 52 247 1162
E-mail : spares@jmsgroup.kr

Singapore : 77, High Street, # 04-05, High Street Plaza, Singapore - 179433.
Tel : +65-6338-5938, 6338-5954, Fax : +65-6338-5560 , Mobile : +65-9029-2404
E-mail : sales@jmsgroup.jp

China : 15/F,NO.12 Zhujiang East Rd, Zhujiang New Town, Guangzhou, China
H.P : +86-15915854640 , Email : jms-china@jmsgroup.jp

Philippines : Manila , Email : jms-manila@jmsgroup.jp, Tel : +63-9190951275

India - Mumbai : #403, 1 Aerocity, Andheri – Kurla Rd, NIBR, Andheri East, Mumbai, Maharashtra – 400072.
Tel : +91-22-62360530, Email : jms-mumbai@jmsgroup.jp

India - Chennai : JMS TOWERS, 28/57 Vepery High Road, Chennai - 600 007. India
Phone : +91-44-4210 6185 to 6188, Mobile : +91-94440-13604
E-mail : backoffice@jmsgroup.jp

India - Salem : No : 23, Ram nagar, Kumarsamy patti, Salem - 636007
Tel : +91-427-4517366, E-mail : sales@jmsgroup.jp

Bangladesh : 5c 4th Floor, 158 Lake Circus, Kalabagan, Mirpur Road, Dhaka 1205, Bangladesh
Tel : +88-01926999919, Mobile : +880 1715-028220 E-mail : jmsbd@jmsgroup.jp

UAE : Post Box No. 16134, Dubai, United Arab Emirates.
E-mail : sales@jmsgroup.jp

Germany : E-mail : jms-germany@jmsgroup.jp, H.P : +49 176 28840689

Turkey : Evliya Çelebi Mh. Genç Osman Cad. No:58 Ak İş Merkezi Ofis:12 Tuzla, ISTANBUL / TURKIYE
Tel : +90 216 392 0082 Mobile : +90 537 236 29 28
E-mail : jms-turkiye@jmsgroup.jp / tech@jms-turkiye.com

Greece : 27 Vas Tsitsani Str, 12462 Haidari Athens, Greece.
Tel : +30-2105819454 Mobile : +30-89378 20050
E-mail : sales@jmsgroup.jp / jmsgreece@jmsgroup.co.jp

Website : www.jmsgroup.jp