



---

Around the World  
Around the Clock  
**Maritime Service**

---

# COMPANY OVERVIEW



**is the premier distributor of marine engine spares and ship operation equipment and machinery. We operate out of Fair Lawn, New Jersey with sales, technical purchasing, warehouse, and logistical operations in Houston, Florida, Rotterdam, and Shanghai.**

With over 25 years of experience in the international maritime industry, we have developed superior expertise and a reputation as a best in class, first-tier spare parts supplier. We consistently deliver prompt and reliable service for our customers. The key to our success and strength is that we are truly global, handling a highly diversified range of products catering to every aspect of sea-going vessel operation. More importantly, we manage to maintain a competitive edge without compromising product quality and service.

With our superior genuine and non-genuine products and options, we can meet any technical, safety, and budgetary requirement. At Kyodo USA, we only offer our customers the top tier products in the industry. This is evident in our list of manufacturers, which includes brands such as **Cummins, Ingersoll Rand, MAN B&W, Wartsila, ABB, Mitsubishi, Daihatsu, Yanmar, Kawasaki, Hamworthy, Alfa Laval**, and more.

With our in-house technical support marine engineering team, and our fully owned freight forwarding and logistics operation, we are well positioned to guarantee our customers end-to-end, trouble free service, as well as reliable quality products.

---

## PRODUCT QUALITY

As a DNV ISO-9001 certified supplier, we guarantee full compliance with all customer requirements, manufacturer technical specifications, models, part numbers, serial numbers, and technical drawings.

We guarantee full compliance with all international and state regulatory standards such as IMO and USCG. We conform to all the main industry code systems such as IMPA and ISSA. Whenever required, we also arrange and issue class society approval certification from DNV, ABS, Lloyds, and other regulatory bodies. Our customers are assured that all parts we deliver have full traceability to the original maker, and are shipped with the original manufacturers' warranty.

## COMPETITIVE PRICING

We endeavor to offer a balance of the highest quality service with the lowest possible price. We are well connected through long-term relationships with leading marine equipment suppliers worldwide. Given our unmatched purchasing power with supply sources, we are able to pass significant savings on to our customers.





# PRODUCT CATEGORIES

## SCOPE OF SUPPLY

### MARINE ENGINES AND SHIP PROPULSION

- Cylinder liners, Cylinder heads and covers
- Piston crowns, skirts, rings, connecting rods and crankshafts,
- Fuel injectors, fuel pumps, nozzles, plungers and barrels
- Turbocharger bearings, rotors, blades, shafts, inlet/outlet castings
- Valves, rotor drives, guides, seats, spindles and cages
- Governors, manifolds, air coolers, heat exchangers
- Engine starters



### AUXILIARY MACHINERY AND EQUIPMENT

- Pumps, compressors, generators and electric motors
- Purification and filtration systems, separators and strainers
- Hydraulic packs, winches, windless and cargo handling systems
- Air conditioning, refrigeration and ventilation systems
- Marine electronics, radio, navigation and communications
- Electric motors



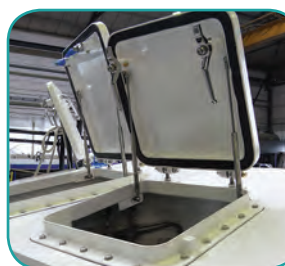
### MARINE ENVIRONMENTAL SYSTEMS

- Oily water separators and oil in water monitors
- Sewage treatment plants and vacuumed toilet systems
- Incinerators, boilers, burners, and combustion systems
- Ballast water management systems



### MOORING SYSTEMS, ANCHORS CHAINS, WATER TIGHT DOORS

- General marine purpose mooring ropes, tails and steel wire ropes
- Polypropylene, fiber composite and nylon construction
- Special purpose lifting, loading, towing and tag ropes
- Anchors, chains, chain components hardware and accessories
- Sling lines and lashing systems
- Water tight doors, Watertight hatches, Baier low profile hatches
- Windows, manholes, vent grills



### GALLEY EQUIPMENT

- Cooking ranges, food slicers and peelers, fryers, cold/hot counters, dishwashers, laundry washers and dryers, freezers, refrigerators,
- Food waste disposers, glass crushers, waste compactors



### OTHER PRODUCTS



**Helukabel**  
Power and Data Cables



**Scotload**  
Load measuring & monitoring devices



**Tempress**  
Pressure gauges, transmitters, temperature gauges



**Everlux**  
Safety Signs





# Marine Engines & Ship Propulsion

**Kyodo USA is a leading supplier of marine diesel engine machinery, propulsion systems and power generation spare parts, servicing the shipping industry for over twenty years.**

We supply spares from highly regarded Japanese and European manufacturers, offering complete supply-chain solutions from overhauling and retrofit projects, to fleet maintenance supply programs and emergency repairs.

## Spare Parts Scope of Supply:

- |                                     |                       |
|-------------------------------------|-----------------------|
| • Cylinder liners, heads and covers | • Manifolds           |
| • Piston crowns, skirts and rings   | • Combustion chambers |
| • Connecting rods                   | • Gear boxes          |
| • Crank shafts                      | • Stuffing boxes      |
| • Bearings                          | • Couplings           |
| • Valves                            |                       |
| • Nozzles                           |                       |
| • Gaskets                           |                       |
| • Fuel injection systems            |                       |
| • Fuel oil pumps                    |                       |
| • Lubricating oil systems           |                       |
| • Air coolers                       |                       |
| • Governors                         |                       |
| • Auxiliary drives                  |                       |
| • Control systems                   |                       |

## Key Customers:

- Container ships
- Tankers
- Cruise ships
- Bulk carriers
- Ferries
- Tug boats
- Naval vessels
- Off-shore

## Quality Assurance:

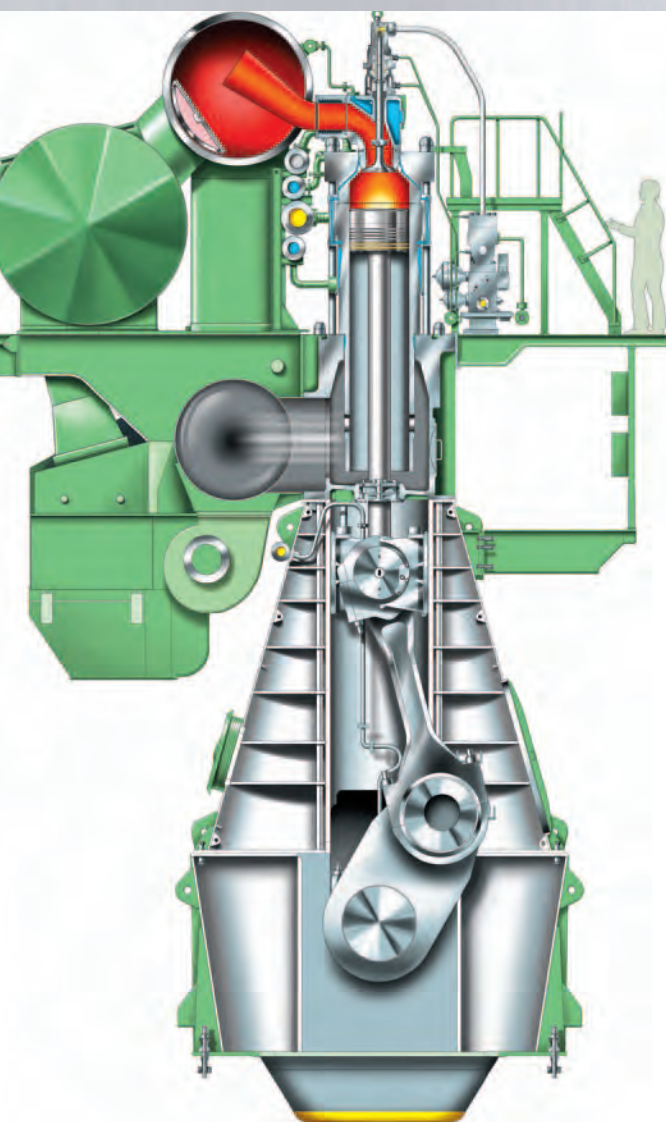
- Full manufacturer warrantee
- ISO 9001
- Traceability
- Material certificate
- Class certificates whenever required

QUALITY MANAGEMENT SYSTEM  
CERTIFIED BY DNV

== **ISO 9001:2008** ==

**In addition to our direct relationships with original manufacturers, we also work very closely with hundreds of OEM's and quality after-market spare parts suppliers around the world offering our customers a wide range of spare parts at highly competitive prices.**





## About Our Global Fleet Maintenance Program

For customers with repeated orders and projected purchasing requirements, we offer:

- Warehousing and guaranteed stock positions of critical spares
- Dynamic fleet maintenance and supply management program
- Volume discount to meet any budget, technical and safety requirement
- Reconditioning and exchange programs

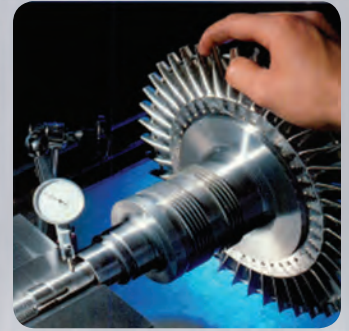


17-01 Pollitt Drive, Fair Lawn, NJ 07410  
Tel: 201.703.1400 / Fax: 201.703.1454

Email: [sales@kyodousa.com](mailto:sales@kyodousa.com)  
Web: [www.kyodousa.com](http://www.kyodousa.com)

## MARINE ENGINES AND SHIP PROPULSION SPARES

MAKER	MODEL	NUMBER
MAN B&W	L	35, 42, 50, 60, 70, 80, 90 // MC, MC-C*, ME-C* 45, 55, 67, 80, 90 // GA, GB, GBE, GF, GFA, GFC, GFCA 16/24, 20/27, 21/31, 23/30, 23/40, 27/38, 28/32, 32/40, 48/60 // A, B, CR, DF, H, LH, GO
	S	26, 35, 42, 46, 50, 60, 65, 70, 80, 90 // MC, MC-C*, ME-B*, ME-C*, ME-GI*
	V	21/31, 27/38, 28/33, 32/40, 32/44, 48/60, 51/60, 52/55, // A, B, D, DE, CR, S
	K	42, 45, 60, 62, 67, 70, 74, 80, 84, 90, 98, 108 // EF, GF, GFC, GFCA, MC, MC-C*, ME, ME-C*
SULZER	RTA	38, 48, 50, 52, 58, 62, 68, 72, 76, 82, 84, 96 // B, C, CU, D, M, UB, U, T, TB, TD,
	RD/RND	68, 76, 90, 105 // M
	AL	20, 25, 30
	RL/RLA/ RLB	56, 66, 76, 90
WARTSILA	L/V	20, 26, 32, 34, 38, 46, 50, 64, // B, C, D, DF, F
	R	22, 32, 46, 61 // D, E, HF
	TM	410, 620,
	RT-FLEX	35, 40, 48, 50, 58, 60, 68, 82, 84, 96 // C, T
DAIHATSU	DK	16, 20, 26, 28, 32, 36 // B, C, e
	PSHT	26D, 26H, 28D, B26H, C26, C26D, C26H
	DL/DS	16, 18, 19, 20, 22, 24, 26, 28, 32, 40 // A, D, F
	DE	18, 23
	DKM	20, 26, 28, 36 // e
YANMAR	S	165(L), 185(A, AL, L) // EN, ET, DN, HN, ST, SN, UT, T
	M	200(AL, D, L), 220(AL, L) // DN, DT, EM, EN, ET, EX, GN, SD, SN, ST, UN, UT
	N	18(A, AL, L), 165(L), 21(A, AL, L), 260(L), 280(L), 330L // DN, EN, GN, SN, UN
	T	220, 240(L), 260(L) // ET, EX, GT, ST SX, UT
KAWASAKI	S/L	50, 60, 70, 80, 90 // MC, MC-C*, ME-C*
	L/V	32/44, 40/54, 52/55 // CR
	K	80, 90, 98 // MC, MC-C*, ME, ME-C*
HANSHIN	LF	46, 50, 54, 58
	LH	24, 26, 30, 32, 34, 36, 38, 41, 46 // A, AG, ARG, G, K, L, LG, LGR, RG
MITSUBISHI	UET/UEC	SERIES
SEMT PIELSTICK	PC/PC2 PC4	2, 3, 4, 5, 6 // L, V SERIES
BERGEN	KRG(B) KVG(B) LDG	SERIES
CATERPILLAR/ MAK	C/M	SERIES
MWM/ DEUTZ	TBD / SBV	SERIES



## **Turbocharger Spares and Repair Services**

**Kyodo USA is a leading supplier of marine diesel engine  
and turbocharger spares servicing the shipping industry  
for over twenty years.**

We supply spares from highly regarded Japanese and European manufacturers offering complete main and auxiliary ship engine solutions from overhauling and retrofit projects, to fleet maintenance supply programs and emergency repairs.

### **Spare Parts Scope of Supply:**

- Complete bearing assemblies
- Rotors
- Blades
- Vanes
- Shafts
- Silencers
- Inlet and outlet casting
- Lubricating oil pumps
- Compressor wheels
- Nozzles
- Cover rings
- Sealing bushes

### **Quality Assurance:**

- Full manufacturer warrantee
- ISO 9001
- Traceability
- Material certificate
- Class certificates whenever required

QUALITY MANAGEMENT SYSTEM  
CERTIFIED BY DNV

== **ISO 9001:2008** ==

---

**We stock and have access to critical inventories worldwide, offering  
both genuine and private label turbocharger spare parts  
catering to any budget requirement.**

---





## About Our Global Fleet Maintenance Program

Customers with repeated orders and projected purchasing requirements are welcome to take advantage of our Global Fleet Maintenance Program.

This program is highly customized and designed to meet your specific technical and logistical spare parts supply requirements, which will include:

- Warehousing and guaranteed stock position of critical spares
- Dynamic fleet maintenance and supply management program
- Volume discount to meet any budget and safety requirement
- Reconditioning and exchange programs



17-01 Pollitt, Drive Fair Lawn, NJ 07410  
Tel: 201.703.1400 / Fax: 201.703.1454

Email: [sales@kyodousa.com](mailto:sales@kyodousa.com)  
Web: [www.kyodousa.com](http://www.kyodousa.com)

## TURBOCHARGERS, MAKERS and TYPES

MAKER	TYPE	MODEL
ABB/BBC		
	VTR	160, 200, 214, 250, 254, 304, 320, 354, 400, 454, 500, 564, 630, 714, 750
	VTC	214, 254, 304
	TPL	61, 65, 67, 69, 71, 73, 76, 77, 79, 80, 85, 91
	TPS	44, 48, 52, 57, 61
	RR	131, 151, 181, 221
	TPR	61
MAN		
	NA	20, 24, 26, 29, 34, 40, 48, 57, 70, 79
	NR	12, 14, 15, 17, 20, 24, 26, 29, 34
	TCA	33, 44, 55, 66, 77, 88
	TCR	12, 14, 16, 18, 20, 22
MITSUBISHI		
	MET/SD	33SD, 42SD, 53SD, 66SD, 83SD
	MET/SE	33SE, 42SE, 53SE, 66SE, 71SE, 83SE, 90SE
NAPIER		
	NA	295, 297, 355, 357, 395, 397, 455, 457
	SA	84, 85, 105,
	MS	90, 100, 200
	HP	90, 100, 200, 210





## Compressed Air Systems

**Kyodo USA is a leading supplier of compressed air systems and spares to the shipping industry, covering a wide range of compressors for major marine applications and vessel operation requirements.**

We supply complete compressor units, replacement kits and individual spares from highly regarded manufacturers offering complete supply chain solutions for on-going fleet maintenance programs and spares for emergency repairs.

### **Spare Parts Scope of Supply:**

- Complete unit replacement
- Spare kits
- Emergency repair kits
- Fleet maintenance programs
- Fleet replacement programs

### **Key Customers:**

- Container ships
- Tankers
- Cruise ships
- Bulk carriers
- Ferries
- Tug boats
- Naval vessels
- Off-shore

### **Quality Assurance:**

- Full manufacturer warrantee
- ISO 9001
- Traceability
- Material certificate
- Class certificates whenever required

QUALITY MANAGEMENT SYSTEM  
CERTIFIED BY DNV

== **ISO 9001:2008** ==

**In addition to our direct relationships with original manufacturers, we also work closely with hundreds of OEM and quality spare parts suppliers around the world, offering our customers access to the widest selection of spare parts at highly competitive prices.**

17-01 Pollitt Drive, Fair Lawn, NJ 07410 / Tel: 201.703.1400 / Fax: 201.703.1454  
**Email: [sales@kyodousa.com](mailto:sales@kyodousa.com) / Web: [www.kyodousa.com](http://www.kyodousa.com)**





## About Our Global Fleet Maintenance Program

Customers with repeat orders and projected purchasing requirements are welcome to take advantage of our Global Fleet Maintenance Program, which will include:

- Warehousing and guaranteed stock position of critical spares
- Dynamic fleet maintenance spares and supply management program
- Volume discount to meet any budget and safety requirement



17-01 Pollitt Drive, Fair Lawn, NJ 07410  
Tel: 201.703.1400 / Fax: 201.703.1454

Email: [sales@kyodousa.com](mailto:sales@kyodousa.com)  
Web: [www.kyodousa.com](http://www.kyodousa.com)

## COMPRESSED AIR SYSTEMS

COMPRESSOR	MANUFACTURER
<b>POSITIVE DISPLACEMENT</b> <b>Reciprocating Compressors</b> <ul style="list-style-type: none"> <li>• Single acting</li> <li>• Double acting</li> <li>• Diaphragms</li> </ul> <b>Rotary Compressors</b> <ul style="list-style-type: none"> <li>• Lobes</li> <li>• Liquid rings</li> <li>• Rotary screws</li> <li>• Scrolls</li> <li>• Sliding vanes</li> </ul>	<ul style="list-style-type: none"> <li>• ALUP COMPRESSORS</li> <li>• ATLAS COPCO</li> <li>• BAUER COMPRESSORS</li> <li>• BITZER</li> <li>• BLISSFIELD</li> <li>• BOCK</li> <li>• BRISTOL COMPRESSORS</li> <li>• BROOMWADE</li> <li>• BURCKHARDT</li> <li>• CAMPBELL HAUSFELD</li> <li>• CARLYLE COMPRESSORS</li> </ul>
<b>DYNAMIC COMPRESSORS</b> <b>Centrifugal compressors</b> <b>Axial compressors</b>	<ul style="list-style-type: none"> <li>• CARRIER</li> <li>• COMPAIR</li> <li>• COPELAND</li> <li>• CURTIS-TOLEDO</li> <li>• DAIKIN</li> <li>• DANFOSS</li> <li>• DWM COPELAND</li> <li>• GARDNER DENVER</li> <li>• HAMWORTHY</li> <li>• HANKINSON</li> <li>• HATLAPA</li> <li>• HOWDEN THOMSEN</li> <li>• INGERSOLL RAND</li> <li>• JOY</li> <li>• KAESER</li> <li>• KEUM SUNG</li> <li>• KOBELCO</li> <li>• NAMIREI SHOWA</li> <li>• QUINCY</li> <li>• RIX INDUSTRIES</li> <li>• SABROE</li> <li>• SAUER COMPRESSORS</li> <li>• SPERRE</li> <li>• STAL REFRIDGERATION</li> <li>• SUCTION GAS ENGINES</li> <li>• SULLAIR</li> <li>• SULLIVEN PALATEK</li> <li>• TAMROTOR</li> <li>• TANABE</li> <li>• TECUMSEH</li> <li>• WORTHINGTON COMPRESSORS</li> <li>• YANMAR</li> <li>• YORK</li> <li>• SULZER COMPRESSORS</li> </ul>
<b>AIR DRYERS</b> <b>Refridgerated air dryers</b> <b>Compressed air dryers</b>	
<b>APPLICATIONS</b> Air conditioning Refridgeration Reefer compressors Air compressors Starting air compressors Emergency air compressors Breathing air compressors SCBA air compressors ECR A/C compressors	
<b>SPARE PARTS</b> Air filters Air recievers Fans Inlet valves Discharge valves Check valves Safety valves Regulators Regulators Gauges Pistons Shafts Impellers Desiccants Oil filters Adsorbers Lubricants Complete kits Gaskets G-Rings	



## Marine Pumps

**Kyodo USA is a leading supplier and distributor of marine pumps and spares covering all major marine applications and vessel operation requirements.**

We supply complete units, replacement kits or individual spares from highly regarded manufacturers offering supply chain solutions for on-going fleet maintenance programs, complete unit replacements, and emergency repairs.

### **Spare Parts Scope of Supply:**

- Complete unit replacement
- Spares kits
- Emergency repair kits
- Fleet maintenance programs
- Fleet replacement programs

### **Key Customers:**

- Container ships
- Tankers
- Cruise ships
- Bulk carriers
- Ferries
- Tug boats
- Naval vessels
- Off-Shore

### **Quality Assurance:**

- Full manufacturer warrantee
- ISO 9001
- Traceability
- Material certificate
- Conform with all leading marine classification societies

QUALITY MANAGEMENT SYSTEM  
CERTIFIED BY DNV

== **ISO 9001:2008** ==

**In addition to our direct relationships with original manufacturers, we also work very closely with hundreds of OEM's and quality after-market spare parts suppliers around the world offering our customers a wide range of spare parts at highly competitive prices.**





## About Our Global Fleet Maintenance Program

Customers with repeated orders and projected purchasing requirements are welcome to take advantage of our Global Fleet Maintenance Program.

This program is highly customized and designed to meet your specific technical and logistical spare parts supply requirements, which will include:

- Warehousing and guaranteed stock positions of critical spares
- Dynamic fleet maintenance and spares supply management program
- Volume discount to meet any budget and safety requirement

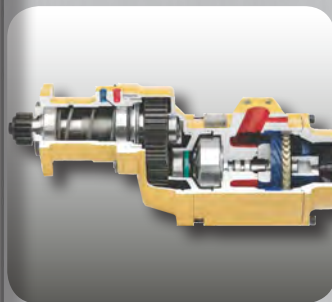


17-01 Pollitt Drive, Fair Lawn, NJ 07410  
Tel: 201.703.1400 / Fax: 201.703.1454

Email: [sales@kyodousa.com](mailto:sales@kyodousa.com)  
Web: [www.kyodousa.com](http://www.kyodousa.com)

## MARINE PUMPS

PUMP TYPES	MARINE APPLICATIONS	MAKERS	
<b>Centrifugal Pumps</b>	<ul style="list-style-type: none"><li>• Bilge pumps</li><li>• Ballast pumps</li><li>• Fuel pumps</li><li>• Cargo pumps</li><li>• Sewage treatment pumps</li><li>• Sea water cooling / circulation pumps</li><li>• Fresh water cooling / circulation pumps</li><li>• Hot water pumps</li><li>• Drinking water pumps</li><li>• Sludge pumps</li><li>• Liquid mud pumps</li></ul>	<ul style="list-style-type: none"><li>• Allweiler</li><li>• APV</li><li>• Azcue</li><li>• Bornemann</li><li>• Coffin</li><li>• Coratia pumps</li><li>• Danfoss</li><li>• Desmi</li><li>• Eureka</li><li>• Frank Mohn</li><li>• Flowserv</li><li>• Grundfos</li><li>• Hamworthy</li><li>• Heishin</li><li>• IMO</li><li>• Ingersoll Rand</li><li>• Iron</li><li>• ITT</li><li>• Ishii</li><li>• Kawasaki</li><li>• KRAL</li><li>• KSB</li><li>• Leistritz Janney</li><li>• Naniwa</li><li>• Shinko</li><li>• Taiko Kikai</li><li>• Teikoku Kikai</li><li>• Wilden</li></ul>	
<ul style="list-style-type: none"><li>• Radial flow pumps</li><li>• Axial pumps</li><li>• Self priming pumps</li><li>• Single suction pumps</li><li>• Double suction pumps</li><li>• Single stage pumps</li><li>• Double stage pumps</li></ul>	<ul style="list-style-type: none"><li>• Emergency/fire fighting pumps</li><li>• Fuel/Oil injection pumps</li><li>• Fuel/Oil transfer pumps</li><li>• Fuel/Oil booster pumps</li><li>• Fuel/Oil circulation pumps</li><li>• Fuel/Oil lubrication pumps</li><li>• Oil burner pumps</li><li>• Boiler feed pumps</li><li>• Boiler water circulation pumps</li><li>• Boiler exhaust circulation pumps</li><li>• Chemical pumps</li><li>• LNG / LPG pumps</li></ul>		
<b>Progressive Cavity Pumps</b>	<ul style="list-style-type: none"><li>• Rotor pumps</li><li>• Vane pumps</li><li>• Diaphragm pumps</li><li>• Gear pumps</li><li>• Reciprocating pumps</li><li>• Piston pump</li><li>• Screw pumps</li><li>• Eccentric screw pumps</li><li>• Two-spindle screw pumps</li><li>• Three screw pumps</li><li>• Hydraulic pumps</li><li>• Vacuum pumps</li></ul>		<ul style="list-style-type: none"><li>• Diverter pumps</li><li>• Heating pumps</li><li>• Stripping pumps</li><li>• Sanitary pumps</li><li>• Oily/dirty water treatment pumps</li><li>• Heat transfer pumps</li><li>• Tank cleaning pumps</li></ul>
<b>General Types Pumps</b>			
<ul style="list-style-type: none"><li>• Propeller pumps</li><li>• Diaphragm blower pumps</li><li>• Rotary blower pumps</li><li>• Dry vacuum pumps</li><li>• Side channel pumps</li><li>• Magnetic drive pumps</li><li>• Motor pumps</li><li>• Condensate pumps</li><li>• Hand held pumps</li></ul>			
<b>Ejector Pumps</b>			
<ul style="list-style-type: none"><li>• Water powered pumps</li><li>• Steam powered pumps</li></ul>			



**Kyodo USA is a leading supplier and distributor of Ingersoll Rand compressed air solutions to the marine and offshore sectors, offering a complete range of air motors, starters, hoists, pneumatic tools and compressors.**

We offer world class reliability with well-known Ingersoll Rand quality and performance for a wide range of compressed air solutions onboard sea-going vessels and off-shore rigs.

**Scope of Supply:**

- Starters
- Hoists
- Pneumatic Tools
- Compressors
- Air Motors

**Quality Assurance:**

- Full manufacturer warrantee
- Factory original works certificate
- Certified ISO 9001 Quality Management System
- Conform to IMPA and ISSA codes
- Class certificates whenever required

**Key Customers:**

- |                   |                  |
|-------------------|------------------|
| • Container Ships | • Ferries        |
| • Tankers         | • Tug Boats      |
| • Cruise Ships    | • Naval Vessels  |
| • Bulk Carriers   | • Off-Shore Rigs |

**QUALITY MANAGEMENT SYSTEM  
CERTIFIED BY DNV**

**ISO 9001:2008**

**Starter Key Features**

- No internal lubrication necessary
- Sealing option for air and gas applications
- Left and right-handed rotation available
- 30–150 psi operation

**Hoist Key Features**

- Capacities ranging from 1/8 to 100 tons
- Meets ASME B30.16 specifications
- Spark resistant models available
- Wear tested to over 1 million cycles before replacement

**Compressor Key Features**

- Ranges between 90–160 kW
- Small footprint (95cm x 295cm)
- Easy and limited maintenance

**Pneumatic Tools Key Features**

- Safe operating in hazardous conditions
- 150 degree to 300 degree temperature rate
- 0.10 to 30 horsepower

**Pneumatic Tools Key Features**

- Diversified product line from grinders to sprayers and sanders
- HVLP (High volume low pressure) technology





## About Our Global Fleet Maintenance Program

Customers with repeat orders and projected purchasing requirements are welcome to take advantage of our Global Fleet Maintenance Program. This program is highly customized and designed to meet your specific technical and logistical requirements which will include:

- Warehousing and guaranteed stock position of critical spares
- Dynamic fleet maintenance spares and supply management program
- Volume discount to meet any budget and safety requirements
- Reconditioning and exchange programs

### AIR STARTERS

Model	Pressure	Break Away Torque	Speed at Max HP	Max Power
150TMPF	60-120 PSI	74-147 ft-lb	1296-1620 RPM	9-22 HP
ST544	60-150 PSI	74-182 ft-lb	1296-1620 RPM	9-28 HP
ST599	30-120 PSI	72-295 ft-lb	1185-1560 RPM	8-44 HP
ST650	90-150 PSI	155-260 ft-lb	1950-2400 RPM	20-67 HP
ST699	30-90 PSI	110-290 ft-lb	1950-2400 RPM	20-67 HP
ST799/999	30-90 PSI	110-310 ft-lb	1750-2250 RPM	18-66 HP
ST1099	30-90 PSI	82-347 ft-lb	1425-2060 RPM	13-68 HP

### HOISTS

Model	Capacity	Loaded Lifting/Lowering Speed	Headroom	Weight
CLK 125-500	125-500 kg	13.1-4.6 m/min / 11.3-6.7 m/min	358.1-389.9 mm	15.4-17.2 kg
ML250KS-ML1000K	250-1000 kg	12.2-8.5 m/min / 27.4-14.9 m/min	457.2 mm	21.8-27.7 kg
7770E-7792A	125-2000 kg	33.5-3.7 m/min / 83.8-7.3 m/min	431.8-569 mm	18.6-36.7 kg
HE1005H-HE2050M	0.5-50 tons	5.2-1.1 m/min / 5.8-1.3 m/min	875-1480 mm	211-2120 kg
LC2A015S-LCA1000Q	1.5-100 tons	6.2-0.3 m/min / 8.5-0.5 m/min	409-2455 mm	38-2200 kg
HA2-012-HA3-100	12.5-100 tons	2.4-0.46 m/min / 3.7-0.61 m/min	978-2432 mm	552-4021 kg
BHS50M-BHS200LCA4P	50-200 tons	1.2-0.3 m/min / 1.8-0.35 m/min	1040-1901 mm	2616-9990 kg

### COMPRESSORS

Model	Rated Pressure	Flow	Nominal Power	Dimensions (LxWxH)
R90	6 bar	18.7 m3/min	90 kW	2950x950x1800 mm
R10	6 bar	23 m3/min	110 kW	2950x950x1800 mm
R132	6 bar	27 m3/min	132 kW	2950x950x1800 mm
R160	6 bar	29.2 m3/min	160 kW	2950x950x1800 mm

### AIR MOTORS

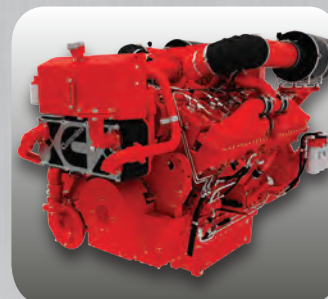
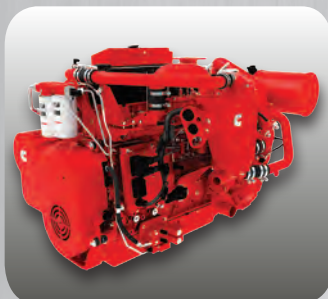
Model	Max Power	Speed at Max Power	Starting Torque	Stall Torque
CCM-EE59G	1.53-4.85 kW	1075-100 RPM	17.9-610 Nm	25.5-814 Nm
KK5B546-KK5B550	21.6-22.3 kW	900-880 RPM	248-274 Nm	407-441 Nm
MMP150	11.9 kW	1800 RPM	82.7 Nm	105.8 Nm
SM1AM-SM8AM	0.25-3.6 kW	7600-2500 RPM	0.39-13.6 Nm	0.52-19 Nm
MVA017A-MOV075AA	1.44-7.8 kW	2800-2600 RPM	6.1-30.5 Nm	9.5-40.7 Nm

### TOOLS

Model	Application	Technical Details
3101G Angle Grinder	20000 RPM Finishing Grinder	0.25 kW Rated Power, 1/4" Collet Output, 0.58 kg
422G Wheel Grinder	5" Finishing Angle Grinder	1 kW Rated Power, 5" Wheel Size, 4.1 kg
3107G 1/4" Die Grinder	27000 RPM Finishing Grinder	0.25 kW Rated Power, 1/4" Collet Output, 168 mm
1, Q2, 5, 6, 7 Series Drill	6000-600 RPM Drill	1.1-28.8 Nm stall torque, 0.54-1.90 kg weight
1,41 Series Screwdriver	Air Screwdriver	0.30-100 Nm Torque, 0.68-1.4 kg
Impactool Wrenches	3/8"-2 1/2" Drive, 355-10000 RPM	1500-550 impacts per min, 27-33900 NM Torque Range



17-01 Pollitt Drive, Fair Lawn, NJ 07410 Tel: 201.703.1400 / Fax: 201.703.1454  
Email: [sales@kyodousa.com](mailto:sales@kyodousa.com) / Web: [www.kyodousa.com](http://www.kyodousa.com)



**Kyodo USA has partnered with Cummins Power Systems to supply Genuine Cummins parts for a wide range of Engines, Generators, and Auxiliaries specific to the marine and offshore industries.**

Kyodo USA provides Cummins quality parts and a partnership with Cummins Power Systems for product support throughout the Mid-Atlantic Region of the United States.

**Scope of Supply:**

- Propulsion
- Auxiliary
- Gensets
- Premium Options
- Filters

**Quality Assurance:**

- Full manufacturer warranty
- Factory original works certificate
- Certified ISO 9001 Quality Management System
- Conform to IMPA and ISSA codes
- Traceability
- Class certificates whenever required

**Key Customers**

- Container ships
- Tankers
- Cruise ships
- Bulk carriers
- Mega yachts
- Tug boats
- Naval vessels
- Off-shore / Rigs

QUALITY MANAGEMENT SYSTEM  
CERTIFIED BY DNV

== **ISO 9001:2008** ==

**Marine Propulsion**

- Propulsion solutions from 230 - 2700 hp
- Reliable and durable
- Certified to EPA, IMO and EU regulations

**Marine Auxiliaries**

- Auxiliary power solutions from 104 - 2547 hp
- Can be cross-matched with STAMFORD AvK and MARKON alternators
- High fuel efficiency

**Marine Gensets**

- Optimum durability and functionality
- Reliability and low cost of operation
- Digital monitor with ship central data and alarm system
- Conform to SOLAS. Classifiable for UMS applications
- Certificate available for major Classification Societies

**Marine Alternators**

- Range from 0.6 to 21000 kVA
- MARKON, STAMFORD and AvK product brands
- Diverse range of application environments

**Premium Options**

- Effectively monitor the cost of operation
- Increase the life span of engine
- Reduce components wear
- Reduce maintenance and tailor the engine for a specific application





## About Our Global Fleet Maintenance Program

Customers with repeated orders and projected purchasing requirements are welcome to take advantage of our Global Fleet Maintenance Program. This program is highly customized and designed to meet your specific technical and logistical spare parts supply requirements which will include:

- Warehousing and guaranteed stock position of critical spares
- Dynamic fleet maintenance spares supply management program
- Volume discount to meet any budget and safety requirements
- Reconditioning and exchange programs

Technical & Distribution Partner

**Klattenberg Marine**  
Mobile: (561) 302-5090  
Email: shipfix@aol.com

### MARINE PROPULSION ENGINES

MODEL	KW	BHP	RPM	FUEL CONSUMPTION (L/HR)
QSK60	1491-2013	2000-2700	1600-1900	361.2-521.9
QSK50	1268-1641	1700-2200	1600-2000	311.5-353.3
KTA50	1044-1398	1400-1875	1600-1950	261.3-348.0
QSK38	746-1044	1000-1400	1600-1900	185.6-257.7
KTA38	559-1119	750-1500	1600-2050	145.4-279.0
QSK19	373-597	500-800	1800-2100	95.3-149.0
KTA19	373-522	500-700	1800-2100	96-136.5
NTA855	242-298	325-400	1800	61-79
QSM11	220-526	295-705	1800-2500	55.2-139.2
QSL9	213-302	286-404	1800-2100	53.4-82
QSB8.3	368-441	493-592	2600-2800	96.2-122.7
QSB6.7	169-404	227-542	2600-3300	46.9-110.2

### MARINE AUXILIARY ENGINES FOR DIESEL ELECTRIC / MARINE GENERATOR

MODEL	KW	BHP	CONFIGURATION	FUEL CONSUMPTION (L/HR)
QSK60	1563-1900	2095-2547	V-16 cylinder, 4 stroke diesel	378.1-494.9
QSK50	1290-1628	1730-2183	V-16 cylinder, 4 stroke diesel	308.8-332.3
KTA50	880-129	1180-1730	V-16 cylinder, 4 stroke diesel	217.3-314.6
QSK38	984-1044	1320-1400	V-12 cylinder, 4 stroke diesel	234.3-262.6
KTA38	634-1007	850-135	V-12 cylinder, 4 stroke diesel	160-244.5
V28	421-608	565-815	V-12 cylinder, 4 stroke diesel	104.3-154.0
QSK19	433-563	580-755	In-Line, 6 cylinder, 4 stroke diesel	111.1-148.5
KTA19	336-507	450-680	In-Line, 6 cylinder, 4 stroke diesel	82.5-122.3
N855	209-358	280-480	In-Line, 6 cylinder	N/A
QSM11	265-317	355-425	In-Line, 6 cylinder	65-82.9
6CT	122-201	164-270	In-Line, 6 cylinder	30.3-56.6
QSB7	98-210	132-282	In-Line, 6 cylinder, 4 stroke diesel	28.1-58.1
6BT	78-112	104-150	In-Line, 6 cylinder	19.8-27.1

### C POWER GENSETS

MODEL	KWE	KVA	VOLTAGE	FUEL CONSUMPTION (L/HR)
QSK60-CP	1440-1825	1800-2281	440-690	N/A
K50-CP	1050-1240	1313-1550	380-480	244.5-290.7
K38-CP	764-920	955-1150	380-480	206-226.7
K19-CP	335-460	419-575	380-480	91.1-120.8
QSM11-CP	250-300	313-375	380-480	65-78.6
6C-CP	136-170	170-213	380-480	41.3-46.6
6B-CP	84-99	93-124	380-480	22.4-27.1

### PREMIUM OPTIONS

OPTIONS	AVAILABLE MODEL
C Command	All
Centinel	K Series engines
Eliminator	KTA38, KTA50, all QSK MCRC engines
Pre-Lube with Quik Evac	QSK38, QSK50

### MARINE ALTERNATORS

MODEL	MAKER	MAX. CONTINUOUS RATING AT 50Hz/60Hz (kVA)
P80	STAMFORD	3875/5190
P6/P7	STAMFORD	1250/1513 - 2200/2750
HC	STAMFORD	1135/1438
UC	STAMFORD	85/103.8 - 250/312.5
P0/P1	STAMFORD	20/22 - 45/55
DIG 163/167	AvK	17500/17000 - 17600/21000
DIG 140/142/150/156	AvK	4050/5050 - 10000/11000
DIG 110/120/130	AvK	1080/1300 - 3850/4000
DSG 114/125/144	AvK	5000/5940 - 7000/6300
DSG 86/99	AvK	2990/3408 - 4700/5300
DSG 62/74	AvK	1100/1320 - 2000/2400
SL105	MARKON	7/8.8
BL105	MARKON	6.5/7.5

### FLEETGUARD FILTERS FOR ENGINE AND GENERATOR

AIR FILTRATION	Direct Flow	Opti Air
	NanoForce Filters	Magnum RS
FUEL FILTRATION	Nano Net Fuel Filtration System	
FUEL PROCESS	Fuel Pro	Diesel Pro®
	Industrial Pro™	



17-01 Pollitt Drive, Fair Lawn, NJ 07410 / Tel: 201.703.1400 / Fax: 201.703.1454  
Email: sales@kyodousa.com / Web: www.kyodousa.com



**Kyodo USA is a leading supplier and authorized distributor of Fleetguard filtration systems for the marine and offshore sectors.**

We offer world class reliability with well-known Fleetguard quality and performance for a wide range of filters for on-board sea going vessels and off-shore rigs.

**Scope of Supply**

- Air filtration & Intake Systems
- Crankcase Ventilation & Filtration Systems
- Fuel Filtration & Water Separation
- Lube Filtration & Systems
- Coolant/Antifreeze Products Fuel Additives
- Fluid Analysis

**Quality Assurance**

- Manufacturers Non-prorated Warranty
- Certificated of Conformity
- Six Sigma Tools for Continuous Improvement
- Manufacturing Certificates: ISO901, ISO/TS/6949 ISO/IEC 17025, ISO 14001, OSHA 18001
- Conform to IMPA and ISSA codes

**Fuel Filtration**

- Specialized media for specialized environments.
- Higher air flow, lower restriction, and greater capacity designed filters.
- Primary and secondary elements, pre-cleaners, and accessories.
- Highly evolved Stratapore® & Nanonet® media.

**Crankcase Ventilation & Filtration Systems**

- Open and closed crankcase ventilation systems.
- High efficiency coalescing filters.
- Eliminate mist, aerosol vapors, and oil drip in engine compartments.
- Emissions compliance and a cleaner environment.

**Fuel Filtration & Water Separation**

- Quality fuel filtration, maximize fuel system performance and longevity.
- Reduce costly repairs and engine downtime.
- Best-in-class fuel filtration/water separation and particle removal.
- Remove harmful contaminants; ensures optimal fuel system protection per OEM specifications.

**Hydraulic Filtration**

- Extensive line of mobile and industrial hydraulic filters.
- Filters can be selected for petroleum and water base fluid compatibility.
- Filters covering different flow and pressure requirements.
- Filter heads are also available in multiple inlet/outlet port sizes and by-pass valve settings.

**Lube Filtration & Systems**

- Capture and retain contaminants that can damage the engine.
- High efficiency throughout the life of the filter.
- Best cold-flow vs restriction available.
- High contaminant Capacity.

**Coolants/Antifreeze Products**

- Extended Life / Extended Service (OAT's, Hybrids & Standard formulations).
- Protects against liner pitting, provides corrosion protection, proprietary scale inhibitors.
- Formulations available in Ethylene and Propylene glycol; 50/50 or 60/50, premix or concentrate
- ASTM D6210/RMC RP 329; compatible with gaskets, elastomers, & non-metallics.

**Fuel Additive**

- Improve fuel economy, longer service intervals, and increase combustion and power.
- Clean and prevent fuel deposits.
- Stabilize diesel fuel, prevent plugging, and extend fuel filter life.
- Easy cold weather start-up. Prevent cold weather freeze-up and gelation.
- Best biocide available.

QUALITY MANAGEMENT SYSTEM  
CERTIFIED BY DNV

ISO 9001:2008

17-01 Pollitt Drive, Fair Lawn, NJ 07410 / Tel: 201.703.1400 / Fax: 201.703.1454

Email: [sales@kyodousa.com](mailto:sales@kyodousa.com) / Web: [www.kyodousa.com](http://www.kyodousa.com)



# Fleetguard®



## About Our Global Fleet Maintenance Program

Customers with repeated orders and projected purchasing requirements are welcome to take advantage of our Global Fleet Maintenance Program. This program is highly customized and designed to meet your specific technical and logistical spare parts supply requirements which will include:

- Warehousing and guaranteed stock position of critical spares
- Dynamic fleet maintenance spares supply management program
- Volume discount to meet any budget and safety requirements

## OFFERED MARINE FILTRATION SOLUTIONS

MAKER	MODEL
AKASAKA DIESEL	L,M802 / L6108 / M20C / M30C / M36 / M40C / M4219
	M4239D / M4276 / M6076 / M60C / M6125A / M6125QA
	M6140A / M6170A / M6414 / M643 / M753,G / M843 / M843N
ALCO	M854A / M854B / M892 / M964
	251-12 / 251-16 / 251-18 / 251-6 / 251-8
	3034 / 3056 / 3116 / 3126 / 3145 / 3150 / 3160 / 3176
CAT	3208 / 3304 / 3306 / 3406 / 3408 / 3412 / 3500 / 3508
	3512 / 3516 / 3608 / 3612 / 40B / 40J / 42B / 43B / 46B / 47B/
	D311 / D315 / D318 / D320 / D324 / D326 / D330 / D333
CUMMINS	D334 / D336 / D337 / D339 / D342 / D343 / D346 / D348 / D349
	D353 / D364 / D375 / D379 / D386 / D397 / D398 / D399
	ALL CUMMINS ENGINE MODELS
MAN B&W	D0226 / D2840 / D2842 / D2866
MITSUBISHI	6D22TC / MD50 / MD7500 / MD950 / MPTK
	S12R / S16R / S6
	L317D / L423D / L634D / L634T
ONAN	AD / IH / M / MO / P / PBD / PB / PD / PH / PW / RND
PALMER	SPACEMAKER / V / Y
PERKINS	4 / 4.107M / 4.108M / 4.154 / 4.236M / 4.270M / 6.305M
	6.354M / BARRACUDA / FORCE 2 / HT6.354M / M80T
	MARLIN / MK2 / P3.144M / P3.152M / PENGUIN / PEREGRINE
VOLVO PENTA	PIKE / PORBEAGLE / T6.354 / V8.510M
	1113BR / 1114BR / 1MD / 2001 / 2002 / 2003 / 6D / 7D / AD
	AQ / B170B / BB / D1 / D2 / D3 / D30 / D300 / D31
	D3 / D4 / D40A / D41 / D42 / D43 / D44 / D45 / D5A / D6
	D71 / D73 / D7C / D9A / DP / HS1A / KAD / KAMD / MB
	MD / TAMD / TMD

## FILTRATION SOLUTIONS FOR OTHER MAKERS

ALLIS-CHALMERS	ALSTHOM	B&W LATHROP	BARR	BAUDOUIN	BEDFORD
CERLIST DIESEL	CHRIS-CRAFT	CHRYSLER	CRUSADER MARINE	DAYTONA	DETRIOT DIESEL
DEITZAG	EMG/GM	EVINRUDE	FARYMANN	FLAGSHIP	FORD
GARY MARINE	GUASCOR	HERCULES	HINO	INTERCEPTOR MARINE	ISUZU
IVECO	JOHN DEERE	JOHNSON	KELVIN	KERMATH	KHD
LEYLAND	LISTER PETTER	LOMNARDINI	LUGGER	M.T.U.	MACK
MEADOWS	MERCURISER	NANNIDIESEL	NORTHERN LIGHTS	OMC	OWENS
P&H CO	PACEMAKER	RED WING	RENAULT V.I.	REVLEY	ROLLS ROYCE
SAAB MOTOR	SABRE	SCRIPPS	STRATO	SUPERIOR	SUZUKI
UNIVERSAL	VOLKSWAGEN	VW MARINE	WARTSILA DIESEL	WESTERBEKE	YANMAR
YORKSHIRE					

## INDUSTRY APPLICATIONS

Technical & Distribution Partner



MARINE



OIL & GAS



OFF-HIGHWAY



TRANSPORTATION



POWER GENERATOR



17-01 Pollitt Drive, Fair Lawn, NJ 07410 / Tel: 201.703.1400 / Fax: 201.703.1454

Email: [sales@kyodousa.com](mailto:sales@kyodousa.com) / Web: [www.kyodousa.com](http://www.kyodousa.com)



**Kyodo USA is a leading supplier and distributor of DVZ® Water Treatment Systems and spares to marine and offshore sectors, offering a complete range of oily water separators, biological sewage treatment plants, grease traps and oil-in-water monitors.**

We offer the leading water treatment systems and the genuine spare parts from DVZ, with full compliance to all technical and regulatory requirements. We have a superior record in managing complete installations and upgrade projects to ensure that the technical, environment and budget requirements are fully met.

#### **Scope of Supply**

- Oily Water Separator
- Grease Trap
- Biological Sewer Treatment System
- Oil-in-Water Monitor
- Reverse Osmosis

#### **Quality Assurance**

- Full manufacturer warrantee
- Certified ISO 9001 Quality Management System
- Traceability
- Material Certificates
- Class certificates whenever required

#### **Key Customers:**

- |                   |                  |
|-------------------|------------------|
| • Container Ships | • Ferries        |
| • Tankers         | • Tug Boats      |
| • Cruise Ships    | • Naval Vessels  |
| • Bulk Carriers   | • Off-Shore Rigs |

**QUALITY MANAGEMENT SYSTEM  
CERTIFIED BY DNV**

**ISO 9001:2008**

#### **DVZ-JZR Biomaster Key Features**

- Type approved and type tested
- 75% more compact compared to conventional systems
- High purification effect
- Stainless steel

#### **DVZ-SKA Biomaster Key Features**

- USCG acceptance
- Stainless steel
- Low operating costs
- Not sensitive to long shutdown periods

#### **DVZ-FSU Oilchief key features**

- Type approved
- Jet-wash oil drainage
- Compact design
- Easy installation

#### **DVZ-OMD Key Features**

- Type Approved
- Robust construction
- 0-30 ppm range
- User friendly interface





## About Our Global Fleet Maintenance Program

Customers with repeated orders and projected purchasing requirements are welcome to take advantage of our Global Fleet Maintenance Program. This program is highly customized and designed to meet your specific technical and logistical requirements which will include:

- Warehousing and guaranteed stock position of critical spares
- Dynamic fleet maintenance spares and supply management program
- Volume discount to meet any budget and safety requirements
- Reconditioning and exchange programs

### OILY WATER SEPARATOR FSU OILCHIEF

Type	Capacity	Empty Weight	Operation Weight
FSU 250	250 l/h	360 kg	490 kg
FSU 500	500 l/h	460 kg	684 kg
FSU 1000	1000 l/h	480 kg	728 kg
FSU 2500	2500 l/h	840 kg	1700 kg
FSU 5000	5000 l/h	1120 kg	2500 kg
FSU 10000	10000 l/h	2260 kg	5460 kg

### BIOLOGIACL SEWAGE TREATMENT SYSTEM

Type	Passenger Capacity	Total Capacity	Dimensions (LxWxH)
JZR 25-1-1	25	4.63 m <sup>3</sup> /d	1300x1080x1800 mm
JZR 50-1-1	50	9.25 m <sup>3</sup> /d	1440x1040x2000 mm
JZR 50Y-1-1	50	9.25 m <sup>3</sup> /d	1440x1040x1800 mm
JZR 100-1-2	100	18.5 m <sup>3</sup> /d	1680x1540x2000 mm
JZR 150-1-2	150	27.75 m <sup>3</sup> /d	1680x1540x2000 mm
JZR 200-2-4	200	37 m <sup>3</sup> /d	2080x1950x2000 mm
JZR 250-2-4	250	46.25 m <sup>3</sup> /d	2080x1950x2000 mm
JZR 300-2-4	300	55.5 m <sup>3</sup> /d	2080x1950x2000 mm
JZR 400-2-6	400	74 m <sup>3</sup> /d	3080x2040x2000 mm
JZR 500-3-6	500	92.5 m <sup>3</sup> /d	3830x2040x2000 mm

Type	Passenger Capacity	Empty/Operation Weight	Dimensions (LxWxH)
SKA 10	10	480/1080 kg	1030x1050x1490 mm
SKA 20	20	550/1500 kg	1410x1050x1490 mm
SKA 30	30	650/2300 kg	1600x1350x1490 mm
SKA 40	40	940/3110 kg	1660x1680x1490 mm
SKA 50	50	1040/3700 kg	2032x1680x1490 mm
SKA 10 Plus	10	740/1300 kg	1815x1210x1625 mm
SKA 20 Plus	20	950/1750 kg	2255x1210x1625 mm
SKA 30 Plus	30	1035/3500 kg	2345x1465x1625 mm
SKA 40 Plus	40	1187/3100 kg	2510x1770x1625 mm
SKA 50 Plus	50	1304/3700 kg	2885x1770x1625 mm
SKA 800-800 Plus	800	Production on Request	

### OIL-IN-WATER MONITOR OMD

Type	Range	Power Supply	Dimensions (LxWxH)
2005	0-30 ppm, trend up to 50 ppm	24V-240V AC or DC	360x240x100 mm

### REVERSE OSMOSIS

Type	Specifications
Matrix Silver	5 micron cartridge filtration, Ni Al Cu high pressure pump, vibration absorbtion mounts



**Kyodo USA is a leading supplier and distributor of environmental recycling products to the marine and off-shore sectors offering a complete range of food waste disposers, compactors and glass crushers**

We bring world class reliability, quality and performance, servicing all food waste disposals and recycling requirements on board sea-going vessels and off-shore rigs. Our products conform to all **IMO MARPOL** environmental regulations and **IMPA** codes system to ensure full compliance with industry safety and environmental standards.

**Scope of Supply:**

- Food waste disposers
- Compactors
- Glass crushers
- New building projects
- Complete unit replacement
- Fleet retrofit programs

**Quality Assurance:**

- Full manufacturer warrantee
- Factory original works certificate
- Conform to all IMO MARPOL regulations
- Conform to IMPA and ISSA codes
- Class certificates whenever required

**Key Customers:**

- Container ships
- Tankers
- Cruise ships
- Bulk carriers
- Off-Shore Rigs

**QUALITY MANAGEMENT SYSTEM  
CERTIFIED BY DNV**

**ISO 9001:2008**

**Food Waste Disposers Key Features**

- Can be mounted into existing working top sink unit, washing line or free standing installation
- Special cast steel alloys
- Approved IMO MARPOL 73/78 ANNEX V for disposal of food waste into open seas
- Compact design requiring minimal space and footprint

**Compactors Features**

- Can be mounted as a free standing or built-in unit under worktop
- Designed to handle packing waste, boxes, cartons, tins, and plastic cans
- Compresses up to 1/6 of original size
- Lock / start key to prevent unauthorized use
- Open door cut-off safety switch to disable use when door is open
- Drop down door for easy bag removal

**Glass Crusher Features**

- Can be mounted in a stainless steel cabinet
- Handles empty bottles, jars and glass containers.
- Effective grinding to small particles the size of sand
- No sharp edged particles
- Particles are automatically collected into a plastic bag for efficient storage and easy removal





#### VARIOUS INSTALLATION OPTIONS

ATF-sink bolted



ATV - sink welded



BS-sink threaded



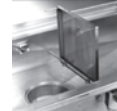
HK-continue



MI-periodic



DRRK - wash line



### FOOD WASTE DISPOSERS - 500 EXCELLENT SERIES

Technical Specifications	510	515	520	530	550	575
Normal capacity, kg/hr	300	400	500	700	850	1000
Electrical power, kW	0,75	1,1	1,5	2,2	4,0	5,5
<i>Rated Current, A for:</i>						
230 V / 3ph. / 50 Hz	3,7	4,6	5,9	9,0	14,4	19,7
400 V / 3 ph. / 50 Hz	2,1	2,6	3,4	5,2	9,0	11,5
440 V / 3ph. / 60Hz	2,1	2,4	3,5	5,2	7,5	11,6
Other 3-ph voltages available	1-ph 220-240V,50 / 60Hz also available for models 510 and 515					
Control Voltage	For marine installation the same as motor voltage. For land installation 230V / 50Hz					
Fuse rating slow	10A	10A	10A	16A	16A	25A



### WASTE COMPACTOR MODEL 8075

Technical Specifications	Model 8075-E	Model 8075-L
Voltage	1-phase 220-240V/50,60Hz	1-phase 115-120V/60Hz
Fuse rating	10A	15A
Continual compaction force:	1360kg (13.300N)	
Compaction ratio	6 to 1	
Rated power	0,75hp = 570W	
Rated current	3A	5A
Volume of compacted waste	0,044 m <sup>3</sup>	
Inside dimension waste container DxWxH	440 x 290 x 340 mm	
Machine weight	71,2 kg	
Gross weight (incl pallet)	84 kg	
Shipping volume	0,5 m <sup>3</sup>	



### GLASS CRUSHER MODEL GKF 550

Technical Specifications	GKF 550
Normal capacity	600-1200 bottles per hour depending on bottle size
Electrical power, kW	1,25
<i>Rated current, A for:</i>	
230V / 3ph / 50Hz	6,4
400V / 3ph / 50Hz	3,7
415V / 3ph / 60Hz	3,7
440V / 3ph / 60Hz	3,2
Control voltage	Marine installation the same as motor voltage. Land installation 230V / 50Hz
Fuse rating, slow	16 A
Gross / net weight kg	138 / 102
Transport volume, m <sup>3</sup>	0,9



17-01 Pollitt Drive, Fair Lawn, NJ 07410  
Tel: 201.703.1400 / Fax: 201.703.1454

Email: sales@kyodousa.com  
Web: www.kyodousa.com



**Kyodo USA is a leading supplier and distributor of Beha Hedo galley equipment to marine and offshore sectors, offering a complete range of cooking equipment, ovens, dishwashers, catering equipment, coolers and laundry equipment.**

We offer highly reliable and durable Beha Hedo galley and accommodation equipment for sea going vessels with very competitive prices. With Beha Hedo, we ensure that we will always be in a position to provide our customers the best products and services possible.

#### **Scope of Supply:**

- Cooking Tables
- Hot Counters
- Frying Pans
- Ovens
- Refrigerators - Freezers
- Dishwashers
- Saws - Slicers- Peelers
- Boilers and Coffee Machines
- Catering Equipment
- Laundry Equipment
- Shelving Systems

#### **Quality Assurance:**

- Full manufacturer warranty
- Factory original works certificate
- Certified ISO 9001 Quality Management System
- Conform to IMPA and ISSA codes
- Traceability
- Class certificates whenever required

#### **Key Customers**

- Container ships
- Tankers
- Cruise ships
- Bulk carriers
- Mega yachts
- Tug boats
- Naval vessels
- Off-shore / Rigs

#### **Cooking Ranges Key Features**

- Stainless steel construction
- Mounting available for every system
- Easy cleaning
- Capacity from 10 to 60 persons

#### **Cold Counters and Refrigerators Key Features**

- Ambient temperature variance from +5° to 32° C
- High capacity
- Built-in microprocessor controller
- High efficiency

#### **Dishwashers Key Features**

- Variable washing cycles
- Front or top loading options
- Filter operating hours counter
- Thermal disinfection available

#### **Peelers and Slicers Key Features**

- Safe operation
- Energy efficiency
- Stainless steel and aluminum construction

#### **Laundry Systems Key Features**

- Stainless steel construction
- Washers and dryers for various capacity demands
- Splash proof design

**QUALITY MANAGEMENT SYSTEM**

**CERTIFIED BY DNV**

**ISO 9001:2008**

17-01 Pollitt Drive, Fair Lawn, NJ 07410 / Tel: 201.703.1400 / Fax: 201.703.1454

**Email: sales@kyodousa.com / Web: www.kyodousa.com**





## About Our Global Fleet Maintenance Program

Customers with repeated orders and projected purchasing requirements are welcome to take advantage of our Global Fleet Maintenance Program. This program is highly customized and designed to meet your specific technical and logistical spare parts supply requirements which will include:

- Warehousing and guaranteed stock position of critical spares
- Dynamic fleet maintenance spares supply management program
- Volume discount to meet any budget and safety requirements

Technical & Distribution Partner

**Klattenberg Marine**  
Mobile: (561) 302-5090  
Email: shipfix@aol.com

### COOKING RANGES

Model	Rated Power	Power Supply	Dimensions (LxWxD)mm	Capacity
15	8.5 kW	110/220/380/440V 1 or 3ph	600 x 650 x 850	10 Persons
M15E	12.5 kW	230/400/440V 3ph 60hz	600 x 650 x 930	10 Persons
M31AA	13.4 kW	230/400/440V 3ph 60hz	860 x 860 x 855	20-30 Persons
M31AB	13.4 kW	230/400/440V 3ph 60hz	860 x 860 x 855	20-30 Persons
M31AD	14.9 kW	230/400/440V 3ph 60hz	860 x 860 x 855	20-30 Persons
M31AD+A	19.4 kW	230/400/440V 3ph 60hz	860 x 860 x 855	20-30 Persons
M2.61AA	9 kW	230/400/440V 3ph 60hz	860 x 860 x 850	10-60 Persons
M2.61AB	9 kW	230/400/440V 3ph 60hz	860 x 860 x 850	10-60 Persons
M2.61AD	10.5 kW	230/400/440V 3ph 60hz	860 x 860 x 850	10-60 Persons

### REFRIGERATORS

CK-A300	0.28kW	220/240V 1ph 50/60 Hz	610 x 645 x 1472	280 ltr
CK-A400	0.2kW	220/240V 1ph 50/60 Hz	610 x 720 x 1800	410 ltr
CK-A500	0.3kW	220/240V 1ph 50/60 Hz	610 x 720 x 1960	470 ltr
CK-A550	0.36kW	220/240V 1ph 50/60 Hz	725 x 810 x 1800	570 ltr
CF-A300	0.32kW	220/240V 1ph 50/60 Hz	610 x 645 x 1472	280 ltr
CF-A400	0.4kW	220/240V 1ph 50/60 Hz	610 x 750 x 1800	410 ltr
CF-A500	0.5kW	220/240V 1ph 50/60 Hz	610 x 750 x 1960	470 ltr
CF-A550	0.56kW	220/240V 1ph 50/60 Hz	810 x 750 x 1935	470 ltr

### COLD COUNTERS

CLMGNH 86-126-166	0.3-0.4 kW	220/240V 1ph 50/60 Hz	650 x 860-1260-1660 x 900	2, 3 or 4 GN
CLMGNS 86-126-166	0.3-0.4 kW	220/240V 1ph 50/60 Hz	650 x 860-1260-1660 x 900	2, 3 or 4 GN

### DISHWASHERS

ML25-ek	10.1 kW	230/400/440V 3ph 60hz	670 x 765 x 1475	1200 dishes/hr
MF92-ek	6.7 kW	230/400/440V 3ph 60hz	600 x 650 x 820	600 dishes/hr
G7860	9.7 kW	230/400/440V 3ph 60hz	598 x 600 x 850	100 plates/hr

### FAT FRYERS

F19/1	9 kW	230/400/440V 3ph 60hz	600 x 434 x 1010	19 ltr
EVO2200	14.4 kW	230/400/440V 3ph 60hz	372 x 580 x 850	2 x 7-9 ltr
EVO250	7.2 kW	230/400/440V 3ph 60hz	372 x 580 x 850	8-10 ltr

### PEELERS

MF5	0.25 kW	220/240V 1ph 50/60 Hz	355 x 515 x 632	25 - 50
MF10	0.37 kW	220/240V 1ph 50/60 Hz	481 x 630 x 1130	>50

### SLICERS

L220	0.14 kW	230V 1ph 50/60 Hz	450 x 400 x 370	5 - 20
L250	0.17 kW	230V 1ph 50/60 Hz	520 x 420 x 370	20 - 40
L300	0.17 kW	230V 1ph 50/60 Hz	520 x 490 x 400	40 - 60



**R. SCHEINERT & SON, INC.**

**BALDOR**  
A MEMBER OF THE ABB GROUP

**LÖNNE**  
A SPANISH COMPANY

**KYODO**  
USA



## **ELECTRIC MOTORS - SERVICE AND SALES**

**Kyodo USA is a leading provider of electric motors for marine and off-shore applications. We supply a complete range of marine quality motors, spare parts and repair kits, offering a comprehensive selection of all major manufacturers and types of marine motors.**

All marine grade motors that we supply specifically meet the highly demanding marine and off-shore requirements. Capitalizing on our extensive and diversified product line, product sourcing capabilities and access to major electric motor manufacturers worldwide, we provide reliable, professional and timely service catering to any marine related requirement.

### **Scope of Supply:**

- All AC and DC types
- Low, medium and high voltage motors
- All marine grade sizes, speeds and power output
- Full range of components and spares
- Repair services

### **Quality Assurance:**

- Marine grade enclosure from IP23 to IP55/56
- IK code protection
- EX explosion, flame and temperature proof
- All B, F, and H class insulation
- IEC, VDE, DIN, DFS, SEN, EN, and CENELEC standards
- All major marine classifications.

**QUALITY MANAGEMENT SYSTEM**

**CERTIFIED BY DNV**

**ISO 9001:2008**

### **Services We Offer**

- Rewinding, Rebuilding
- Large AC & DC motors
- Generator repair
- Pump repair: centrifugal positive displacement
- Gear reducers
- Fans and Blowers

### **Mechanical Repairs**

- Machine shop capabilities
- Dynamic balancing
- Generator repair
- Hermetic rewinding and Mechanical repairs
- Laser alignment
- Sales and service of variable frequency drives AC & DC

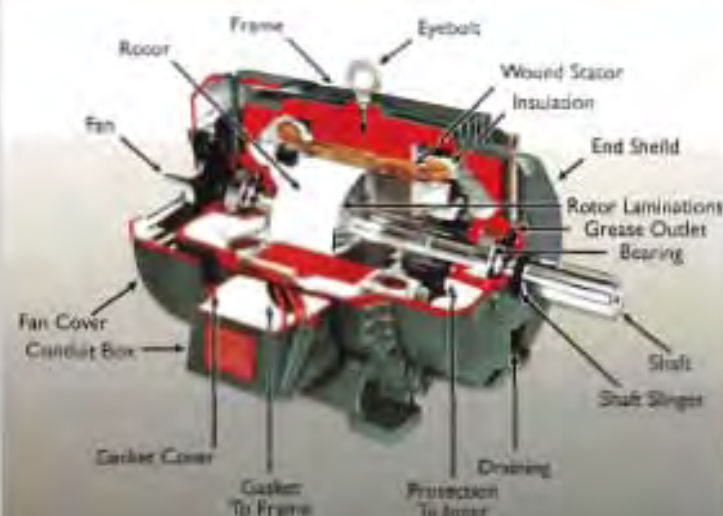
### **On Site Services**

- Line boring
- Portable shaft turning to 8" dia. portable milling
- Portable welding - Mig - Tig - Stick - all alloys
- Flame cutting
- On site balancing - portable machining
- Optical & laser alignment

17-01 Pollitt Drive, Fair Lawn, NJ 07410 / Tel: 201.703.1400 / Fax: 201.703.1454

Email: [sales@kyodousa.com](mailto:sales@kyodousa.com) / Web: [www.kyodousa.com](http://www.kyodousa.com)





#### Motor Test center

- Input 480 volt, 400 amp
- Output 380KVA, 1750HP, 0 to 4160 volt AC, 0 to 700 volt DC
- American HV with temperature monitoring, vibration analyzation and computerized test reports.
- Surge testing to 12,000 volts
- Polarization index testing
- Core testing

#### Certification - Member and/or Affiliation

- U.L. authorized recertification of explosion proof motors
- Electrical Apparatus Services Association (EASA)

MANUFACTURERS	ELECTRIC MOTOR TYPE	APPLICATION AND REQUIREMENT	PLANT CAPABILITIES
ABB	DC type	Critical service	<b>Rewinding and Repair</b> <ul style="list-style-type: none"> <li>• Rewinding – Max. 3000 HP</li> <li>• Bridge cranes – 15 ton</li> <li>• Balancer – 4000 lbs</li> <li>• Largest lathe turning capacity 68" x 312"</li> <li>• Dipping and baking</li> <li>• HLM 126</li> <li>• HLM 166</li> <li>• Hermetic motor rebuilding</li> <li>• Metal spray</li> <li>• Shaft grinding</li> <li>• Arc welding – Mig – Tig</li> </ul> <b>Dipping and Baking</b> <ul style="list-style-type: none"> <li>• Resins used - epoxy</li> <li>• Dip tank size 5' x 5' x 5'</li> <li>• Baking oven 6' x 6' x 7' 8" x 10' x 16'</li> </ul>
ASEA	AC type	Non-essential service	
Baldor Electric	Mechanically commutated	Electric propulsion	
Brook Crompton	Electronically commutated	Deck machinery	
Emerson	Synchronous type	Engine room pumps	
General Electric	Asynchronous type	Slewing pumps	
Grundfos	Three phase induction	Cranes	
Hyosung	Single phase induction	Cargo systems	
Hyundai	Rib cooled design	Compressor centrifugals	
Leeson	Tube cooled design	Oil separators	
Koncar-Mes	Corrosion resistance	Winch drives	
Leroy Sommers	Thruster drives	Thruster drives	
Lonne	Special coating	Fans / Blowers	
Marathon Electric	Variable speeds	Hydraulic power packs	
Nebb			
Nishishiba	Components and Spares		
Rotor	Bearings		
Siemens	Frequency inverters		
Sumitomo	Gears		
Tamagawa Seiki	Belts		
Vem Motors	Pulley		
Yokogawa	Servo controls		
	Couplings		
	Disc Breaks		

#### INDUSTRY APPLICATIONS

Technical & Distribution Partner

**Klattenberg Marine**  
 Mobile: (561) 302-5090  
 Email: shipfix@aol.com



17-01 Pollitt Drive, Fair Lawn, NJ 07410 Tel: 201.703.1400 / Fax: 201.703.1454  
 Email: sales@kyodousa.com / Web: www.kyodousa.com



**Kyodo USA is a leading supplier and distributor of HELUKABEL® Ship Wiring and Marine Cables to marine and offshore sectors, offering a complete range of power, telephone, telecommunications, wiring and drag chain cables.**

We offer GL, LR, ABS, DNV, BV, USSR Register of Shipping and Verband Deutscher Elektrotechniker approved ship wiring and marine cables, with the availability of cutting lengths and production certificate.

#### **Scope of Supply**

- Marine Power Cables
- Ship Telecommunications Cables
- Ship Wiring Cables
- Ship Power Cables
- Shipflex Drag Chain Cables

#### **Quality Assurance**

- Full manufacturer warrantee
- Factory original works certificate
- Certified ISO 9001 Quality Management System
- Conformation to IMPA and ISSA codes
- Traceability
- Class certificates whenever required

#### **Key Customers:**

- |                   |                  |
|-------------------|------------------|
| • Container Ships | • Ferries        |
| • Tankers         | • Tug Boats      |
| • Cruise Ships    | • Naval Vessels  |
| • Bulk Carriers   | • Off-Shore Rigs |

**QUALITY MANAGEMENT SYSTEM**

**CERTIFIED BY DNV**

**ISO 9002:2008**

#### **Marine Power Cables**

- Heat resistant EPR insulation
- Halogen-free and flame retardant
- Max. conductor operating temperature of 85°C

#### **Ship Telecommunications Cables**

- Stranded bare copper conductor
- Cross-linked polyolefin insulation
- Oil resistant and flame retardant

#### **Ship Wiring Cables**

- GL approved
- Nominal voltage 250 V, tested to 1500-3000 V
- PVC inner sheath and core insulation

#### **Ship Power Cables**

- GL, LR, ABS, DNV, BV, Russian Maritime Register of Shipping and RIN approval
- Core insulation of cross-linked polyethylene
- Copper screened braiding

#### **Shipflex Drag Chain Cables**

- Non-adhesive
- Electromagnetic compatibility preferred type
- Weather, ozone and UV resistant





### About Our Global Fleet Maintenance Program

Customers with repeat orders and projected purchasing requirements are welcome to take advantage of our Global Fleet Maintenance Program. This program is highly customized and designed to meet your specific technical and logistical requirements which will include:

- Warehousing and guaranteed stock position of critical spares
- Dynamic fleet maintenance spares and supply management program
- Volume discount to meet any budget and safety requirements
- Reconditioning and exchange programs

#### MARINE POWER CABLES

Part No.	No. Cores x Cross-sec.	Outer Diameter	Cop. Weight	Weight Approx.
59270-59283	1x4- x300 mm <sup>2</sup>	7.5-31.5 mm	81-3345 kg/km	170-3600 kg/km
59284-59290	2x1.5-2x25 mm <sup>2</sup>	11.5-22.5 mm	105-670 kg/km	340-1300 kg/km
59291-59302	3x1.5-3x120 mm <sup>2</sup>	12-43 mm	125-3975 kg/km	380-5680 kg/km
59303-59311	4x4-4x95 mm <sup>2</sup>	15.2-44.2 mm	384-4110 kg/km	620-5930 kg/km
59336-59338	2x2x0.75-11x2x0.75 mm <sup>2</sup>	16-26.2 mm	160-658 kg/km	370-1080 kg/km
59360-59372	2x1.5-33x1.5 mm <sup>2</sup>	7-17.5 mm	89-633 kg/km	110-810 kg/km
59373-59377	2x2.5-7x2.5 mm <sup>2</sup>	7.7-10.3 mm	114-266 kg/km	160-320 kg/km

#### SHIP TELECOMMUNICATION CABLES

Part No.	No. Cores x Cross-sec.	Outer Diameter	Cop. Weight	Weight Approx.
59380-59383	2x2x0.75-8x2x0.75 mm <sup>2</sup>	6.7-11.9 mm	89-225 kg/km	110-310 kg/km
59384-59386	10x2x0.75-16x2x0.75 mm <sup>2</sup>	13.7-16.1 mm	272-323 kg/km	380-520 kg/km
59150-59153	2x2x0.75-11x2x0.75 mm <sup>2</sup>	11.1-19.6 mm	149-658 kg/km	220-780 kg/km
59154-59156	14x2x0.75-24x2x0.75 mm <sup>2</sup>	20.8-25.3 mm	731-1181 kg/km	950-1600 kg/km
59390-59392	2x2x0.4-7x2x0.4 mm <sup>2</sup>	8-12.5 mm	60-146 kg/km	95-220 kg/km
59393-59395	12x2x0.4-27x2x0.4 mm <sup>2</sup>	15.5-20 mm	235-414 kg/km	320-540 kg/km
59396-59397	5x3x0.4-12x3x0.4 mm <sup>2</sup>	16-23 mm	248-500 kg/km	320-540 kg/km

#### SHIP WIRING CABLES

Part No.	No. Cores x Cross-sec.	Outer Diameter	Cop. Weight	Weight Approx.
59450-59453	1x6-1x25 mm <sup>2</sup>	8.3-13.7 mm	57.4-239.5 kg/km	148-447 kg/km
59454-59457	1x35-1x95 mm <sup>2</sup>	1x35-1x95 mm <sup>2</sup>	335-910 kg/km	565-1355 kg/km
59460-59465	2x1.5-7x1.5 mm <sup>2</sup>	9.7-13.3 mm	28.7-100.6 kg/km	146-299 kg/km
59470-59471	4x6-5x6 mm <sup>2</sup>	18.4-19.7 mm	230.3-288 kg/km	595-714 kg/km

#### SHIP POWER CABLES

Part No.	No. Cores x Cross-sec.	Outer Diameter	Cop. Weight	Weight Approx.
59654-59667	1x4- 1x300 mm <sup>2</sup>	2.75-15.5 mm	38-2880 kg/km	70-3200 kg/km
59668-59674	2x1.5-2x25 mm <sup>2</sup>	19-8.5 mm	29-480 kg/km	80-680 kg/km
59675-59686	3x1.5-3x120 mm <sup>2</sup>	10-35.5 mm	43-3456 kg/km	100-4140 kg/km
59687-59697	4x1.5-4x95 mm <sup>2</sup>	10.5-36.1 mm	58-3648 kg/km	130-4445 kg/km
59698-59706	5x1.5-24x1.5 mm <sup>2</sup>	10.2-20.5 mm	72-346 kg/km	165-630 kg/km

#### SHIFFLEX DRAG CHAIN CABLES

Part No	No. Cores x Cross-sec.	Outer Diameter	Cop. Weight	Weight Approx.
Shifflex 512	2x0.5-5x16 mm <sup>2</sup>	6.3-24 mm	35-1050 kg/km	50-1658 kg/km
Shifflex 330	2x0.25-36x0.34 mm <sup>2</sup>	5-13 mm	14.9-188 kg/km	38-340 kg/km
Shifflex 340	2x2x0.25-12x2x1 mm <sup>2</sup>	6.8-18 mm	32-324 kg/km	60-602 kg/km
Shifflex 109 C	1x6-1x240 mm <sup>2</sup>	6.9-28.2 mm	58-2304 kg/km	108-2895 kg/km
Shifflex 109	4x1-4x16 mm <sup>2</sup>	9-48 mm	84-4606 kg/km	124-5350 kg/km







## Mooring Ropes

**Kyodo USA is a distributor of quality mooring ropes for marine and offshore applications and is one of the leading suppliers in the USA.**

We cover the entire spectrum of marine ropes supply from polypropylene and fiber composite ropes to specialized high end and off shore ropes such as HMPE base, polyethylene, polyester, polyamide (nylon) and single point mooring systems.

### Key Customers:

- Bulk carriers
- Container ships
- Oil tankers
- LNG's, VLCC's
- Cruise Ships
- Car carries
- Ferries
- Fishing vessels
- Navy
- Tug boats
- Leisure Yachts
- Off-shore

### Quality Assurance:

- Full manufacturer warrantee
- Factory original works certificate
- Latest EN, ASTM, ISO 2307 and ISO 9001
- OCIMF regulatory compliance
- Intertanko regulatory compliance
- Conform to all leading marine classification societies
- Conform to IMPA and ISSA codes

QUALITY MANAGEMENT SYSTEM  
CERTIFIED BY DNV

== **ISO 9001:2008** ==

**Our general marine purpose and special purpose ropes are available in sizes ranging from 40 to 120 MM with MBL tolerance up to 250 tons in both floating and non floating types.**





## About Our Global Fleet Maintenance Program

Customers with repeated orders and projected purchasing requirements are welcome to take advantage of our Global Fleet Maintenance Program.

This program is highly customized and designed to meet your specific technical and logistic supply requirements to include:

- Warehousing and guaranteed stock position
- Dynamic fleet maintenance and rope supply management program
- Volume discount to meet any budget and safety requirement



17-01 Pollitt Drive Fair Lawn, NJ 07410  
Tel: 201.703.1400 / Fax: 201.703.1454

Email: [sales@kyodousa.com](mailto:sales@kyodousa.com)  
Web: [www.kyodousa.com](http://www.kyodousa.com)

## MOORING ROPES

MARINE ROPES TYPES	CONSTRUCTION AND CHARACTERISTICS	APPLICATIONS
<ul style="list-style-type: none"> <li>• Polypropylene (PP)</li> <li>• Polyester (PES)</li> <li>• Polyamide (PA)</li> <li>• Natural and synthetic fibers</li> <li>• Composite (PES and PP)</li> <li>• High modulus polyethylene (HMPE)</li> <li>• Single point mooring (SPM)</li> </ul>	<ul style="list-style-type: none"> <li>• Floating / non-floating types</li> <li>• 8 and 12 strand plaited</li> <li>• Double and single braided</li> <li>• High strength / low weight ration</li> <li>• UV resistance</li> <li>• Abrasion resistance</li> <li>• Chemical resistance</li> <li>• Heat resistance</li> <li>• High elongation performance</li> <li>• With / without protective covers</li> <li>• Special marine finish</li> <li>• Supplied in variety of colors</li> </ul>	<ul style="list-style-type: none"> <li>• Mooring lines</li> <li>• Nylon tails</li> <li>• Fiber composite tails</li> <li>• Anchor lines</li> <li>• Towing ropes</li> <li>• Tag ropes</li> <li>• Lifting and loading</li> <li>• Salvage</li> <li>• Heavy winching</li> <li>• Commercial fishing</li> <li>• Deep sea anchoring</li> <li>• Offshore installations</li> </ul>

## Scope of Supply-Rope sizes available:

DIAM.		CIRC.	
(MM)	(INCH)	(MM)	(INCH)
40	1-5/8	120	5
44	1-3/4	132	5-1/2
48	2	144	6
52	2-1/8	156	6-1/2
56	2-1/4	168	7
60	2-1/2	180	7-1/2
64	2-5/8	192	8
68	2-3/4	204	8-1/2
72	3	216	9
80	3-1/4	240	10
88	3-5/8	264	11
96	4	288	12
104	4-1/4	312	13
112	4-5/8	336	14
120	5	360	15



## Marine Bearings

**Kyodo USA is a leading supplier of marine bearings, bringing world class quality, reliability, and performance to the marine and off-shore industries.**

We maintain stock and manage active points of supply in the U.S. covering a comprehensive range of ball and roller bearing units from highly regarded manufacturers. We offer complete supply chain solutions from individual supply to on-going fleet maintenance programs.

### Scope of Supply:

- Marine standard bearings
- Customized on-board spares kits
- Emergency repair kits
- Fleet wide planned bearings supply programs

### Key Customers:

- Container ships
- Tankers
- Cruise ships
- Bulk carriers
- Ferries
- Tug boats
- Naval vessels
- Off-shore

### Quality Assurance:

- Full manufacturer warrantee
- Factory test certificate
- ISO 9001
- ISO 14001
- Traceability
- Material certificate
- Conform to all leading marine classification societies.

QUALITY MANAGEMENT SYSTEM  
CERTIFIED BY DNV

== **ISO 9001:2008** ==

**We cover the entire spectrum of marine and off-shore applications to include marine engines, pumps, motors, hydraulic systems and all above deck and below deck mechanical machinery.**

17-01 Pollitt Drive, Fair Lawn, NJ 07410 / Tel: 201.703.1400 / Fax: 201.703.1454  
Email: [sales@kyodousa.com](mailto:sales@kyodousa.com) / Web: [www.kyodousa.com](http://www.kyodousa.com)





## About Our Global Fleet Maintenance Program

Customers with repeated orders and projected purchasing requirements are welcome to take advantage of our Global Fleet Maintenance Program.

This program is highly customized and designed to meet your specific technical and spare parts requirements, which will include:

- Warehousing and guaranteed stock position of critical spares
- Dynamic fleet maintenance and supply management program
- Volume discount to meet any budget and safety requirement



17-01 Pollitt Drive, Fair Lawn, NJ 07410  
Tel: 201.703.1400 / Fax: 201.703.1454

Email: [sales@kyodousa.com](mailto:sales@kyodousa.com)  
Web: [www.kyodousa.com](http://www.kyodousa.com)

## MARINE BEARINGS

BEARINGS TYPES	MARINE & OFF-SHORE APPLICATIONS	MANUFACTURERS
<ul style="list-style-type: none"> <li>• Deep groove bearings</li> <li>• Angular contact ball bearings</li> <li>• Self aligning ball bearings</li> <li>• Cylindrical roller bearings</li> <li>• Cylindrical roller thrust bearings</li> <li>• Tapper roller bearings</li> <li>• Spherical roller bearings</li> <li>• Spherical roller thrust bearings</li> <li>• Thrust ball bearings</li> <li>• Contact bearings</li> <li>• Ceramic Bearings</li> <li>• Shielded / sealed Bearings</li> <li>• High temperature bearings</li> <li>• Needle roller bearings</li> <li>• Slewing bearings</li> <li>• Magnetic bearings</li> <li>• Miniature precision bearings</li> <li>• Y-bearings</li> <li>• Single/double/multi-row bearings</li> <li>• Bearing housing and seals</li> </ul>	<ul style="list-style-type: none"> <li>• Main engines</li> <li>• Auxiliary engines</li> <li>• Turbo chargers</li> <li>• Transmission systems</li> <li>• Hydraulic systems</li> <li>• Gear units</li> <li>• Mooring systems</li> <li>• Cargo handling systems</li> <li>• Compressors</li> <li>• Generators</li> <li>• Pumps</li> <li>• Purifiers</li> <li>• Pulleys</li> <li>• Cranes</li> <li>• Motors</li> <li>• Fans</li> <li>• Winches</li> <li>• Steering gears</li> </ul>	<ul style="list-style-type: none"> <li>• FAG</li> <li>• HARBIN</li> <li>• HRB</li> <li>• MPB</li> <li>• NSK</li> <li>• INA</li> <li>• KOYO</li> <li>• KSB</li> <li>• MCGILL</li> <li>• NTN</li> <li>• RBC</li> <li>• SKF</li> <li>• STC – STEYR</li> <li>• TIMKEN</li> <li>• TORRINGTON</li> <li>• TSB</li> <li>• TSUBAKI</li> </ul>



**Kyodo USA is a leading supplier and distributor of air and electric power tools to the marine and off shore industry bringing world class quality, reliability and performance.**

We maintain stock and manage complete supply chain solutions to ship chandlers and ship owners world-wide. As an approved ISO-9002 quality supplier, our system is in full compliance and up to date with the IMPA and ISSA codes system.

Among the wide range of our power tools products, we are currently featuring the powerful JEX-24 and the JEX-28 multi needle Jet Chisel Needle Scaler.

- Ideal for heavy duty marine, off-shore and industrial applications.
- Effective for de-scaling, cleaning, rust removal, paint and weld slag from hard surfaces.

**JEX -24 JET CHISEL NEEDLE SCALER**



**SPECIFICATIONS:**

Model: JEX-24  
 Air Pressure: 85 PSI  
 Air Consumption: 9.5 CFM  
 Strokes Per minute: 4,000 SPM  
 Standard Needles With Machine: 3 X 180mm  
 Optional Needle Size: 2 or 4 X 180mm  
 Hose Size Requirement: 3/8" ID  
 Dimension (Length): 7-1/2  
 Weight: 6.1 LBS

**Accessories:** 6mm allen wrench, hose nipple PT3/8" X 3/8", threaded adapter PT3/8" X NPT3/8"

**JEX -28 JET CHISEL NEEDLE SCALER**



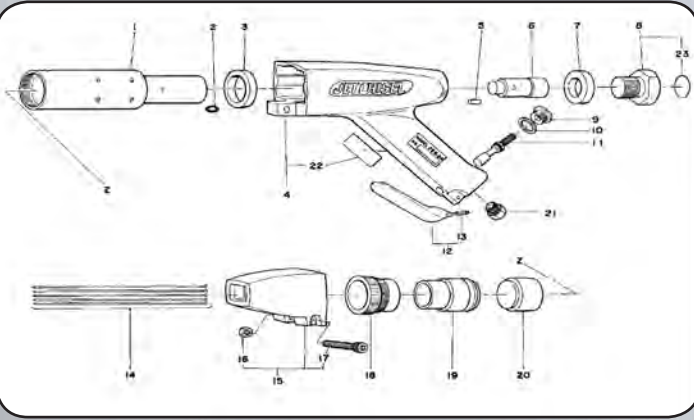
**SPECIFICATIONS:**

Model: JEX-28  
 Air Pressure: 85 PSI  
 Air Consumption: 12.4 CFM  
 Strokes Per minute: 4,500 SPM  
 Standard Needles With Machine: 3 X 180mm  
 Optional Needle Size: 2 or 4 X 180mm  
 Hose Size Requirement: 3/8" ID  
 Dimension (Length): 9-1/2  
 Weight: 7.7 LBS

**Accessories:** 6mm allen wrench, threaded adapter PT3/8" X NPT3/8", hose nipple PT3/8" X 3/8", 4mm needle supporter and needles.



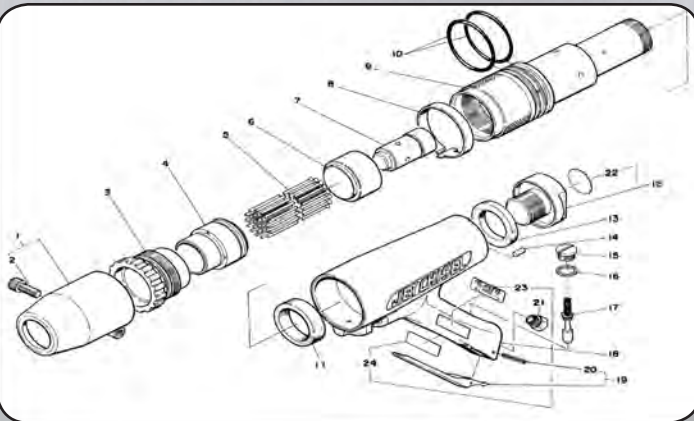
## JET CHISEL JEX-24 ASSEMBLY AND PARTS LIST



### Accessories - JEX 24

TO02350	Bushing PT3/8 X NPT3/8	1
TP00402	Needles-4 X 180mm	12
TPI4992	Needle Supporter - 4mm	1

## JET CHISEL JEX-28 ASSEMBLY AND PARTS LIST



### Accessories - JEX 28

TP01462	Needle Supporter - 4mm	1
TP00402	Needles-4 X 180mm	14
TO02350	Bushing PT3/8 X NPT3/8	1



17-01 Pollitt Drive, Fair Lawn, NJ 07410  
Tel: 201.703.1400 / Fax: 201.703.1454

Email: [sales@kyodousa.com](mailto:sales@kyodousa.com)  
Web: [www.kyodousa.com](http://www.kyodousa.com)

No.	Part No.	Part Name	Quantity
1	TP02241	Cylinder	1
2	TPI1992	O-Ring KS-9	1 set
3	TP02250	Front Washer 34X46X7	1
4	TA90904	Housing Sub Ass'y	1
5	TP01478	Cylinder Lock Pin	1
6	TP02242	Piston	1
7	TP02249	Rear Washer	1
8	TA93278	Rear Plug Ass'y	1
9	TP00389	Valve Cap	1
10	TP00388	Valve Packing	1
11	TA90037	Throttle Valve Ass'y	1 set
12	TP01557	Throttle Lever	1
13	(TQ00563)	Spring Pin 3 X 20	1
14	TP00341	Needles-3 X 180mm	23
15	TA93189	Needle Guide Ass'y	1
16	(TQ01484)	Hex. Nut M8	1
17	(TPI6284)	Hex. Bolt 8 X 45	1
18	TP02246	Lock Ring	1
19	TP02245	Needle Supporter - 3mm	1
20	TP02243	Throttle Anvil	1
21	TQ02349	Reducer M16 XPT3/8	1

No.	Part No.	Part Name	Quantity
1	TA93365	Round Needle Guide Ass'y	1 set
2	(TP00045)	Hex. Bolt 8 X 25	1
3	TP01464	Stop Ring	1
4	TP01461	Needle Supporter - 3mm	1
5	TP00341	Needles - 3X 180mm	1 set
6	TP00399	Throttle Anvil	1
7	TP00395	Piston	1
8	TP01466	Safety Band	1
9	TP01463	Cylinder	1
10	TP01474	O-Ring W-4	2
11	TA90037	Front Washer	1
12	TA90452	Rear Bolt Ass'y	1 set
13	TP01475	Rear Washer	1
14	TP01478	Cylinder Lock Pin	1
15	TP00389	Valve Cap	1
16	TP00388	Valve Packing	1
17	TA90037	Throttle Valve Ass'y	1 set
18	TA90410	Housing Sub Ass'y	1 set
19	TP01557	Throttle Lever	1
20	(TQ00563)	Spring Pin 3 X 20	1
21	TQ02349	Reducer M16 XPT3/8	1