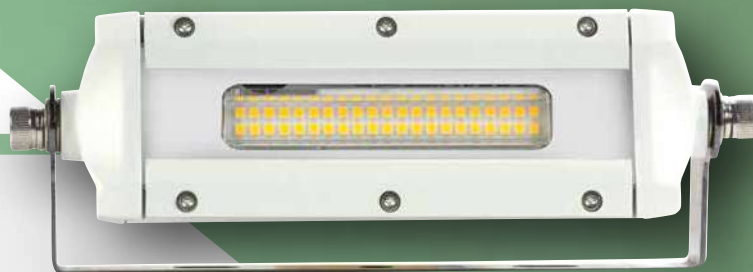




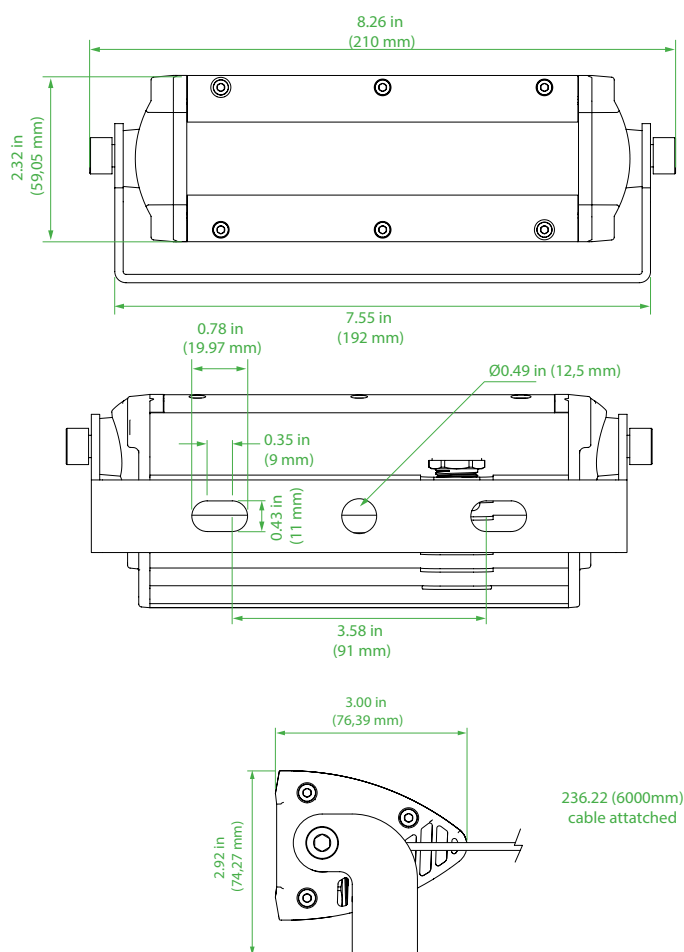
FLLB Series

Flood LED Light Bar 10Watt 1.400Lumens

LED flood lights applicable for decks and technical in- and outdoor applications. Supplied with an external dimmable driver. Available with 360° rotatable bracket or stacking brackets.



Dimensions



Technical Information

Material:	Powder coated anodized seawater resistant aluminium White Trim Ring (optional colours on request *1)
Finish:	White
Hardware:	Marine grade A4 316 stainless steel
Lens:	100°
IP Rating:	IP67
Light Source:	10Watt 140Lumens per Watt Natural White 3900K CRI > 85
Power Source:	85-265Vac 50~60Hz (10-30Vdc optional) Potted driver
Ambient Temperature:	Operating Temperature -40°C ~ +55°
Cable :	Supplied with 6mtr 2 x 1.0mm power cable
Mounting:	Adjustable A4 316 Stainless Steel bracket 4mm thickness (optional 360° rotatable bracket available *1) (optional stacking brackets available *2)
Fixture weight:	3.19 lbs (1,45 kg)

Compliances

In compliance with rules of maritime classification societies, additional VDE and IEC 60092-306.
(Equipment luminaires and lighting accessories for use on vessels)

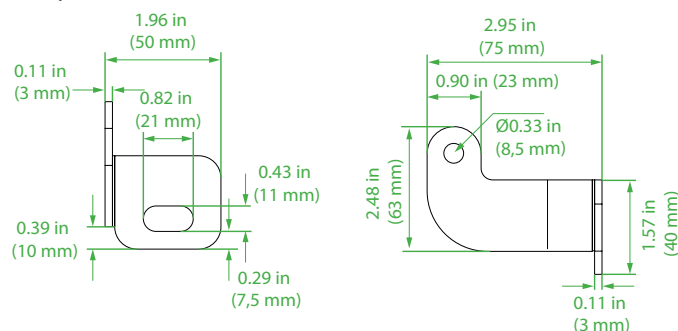
FLLB Series

Flood LED Light Bar 10Watt 1.400Lumens

Ordering information

Article No.:	Beam Angle	Light Colour	Voltage	Finish	Specialties
FLLB-010-39WH-HV	Wide Beam 100°	3900K Natural White	85-265Vac 50~60Hz	White	Standard 6mtr power cable
FLLB-010-39WH-LV	Wide Beam 100°	3900K Natural White	10-30Vdc	White	Standard 6mtr power cable
FLLB-010-39WH-RT-HV	Wide Beam 100°	3900K Natural White	85-265Vac 50~60Hz	White	Standard 6mtr power cable
FLLB-010-39WH-RT-LV	Wide Beam 100°	3900K Natural White	10-30Vdc	White	Standard 6mtr power cable

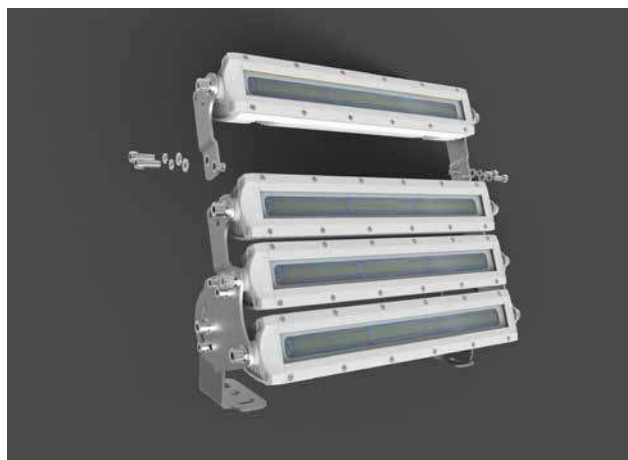
*1 Optional 360° rotatable bracket:



*2 Optional stacking brackets:

For stacking two lights you need a FLLB-SB-BASE Set

For stacking three lights you need a FLLB-SB-TOP Set, for extra lights an extra FLLB-SB-TOP Set is required



Special Projects

We may be able to accommodate your special projects, so please don't hesitate to ask about additional options. Minimum order quantities and/or extended lead times will apply. Contact your E-LED Lighting representative with specific inquiries.

Product design and specifications are subject to change without notice. The most current specification sheets can be found at www.E-LEDLighting.com

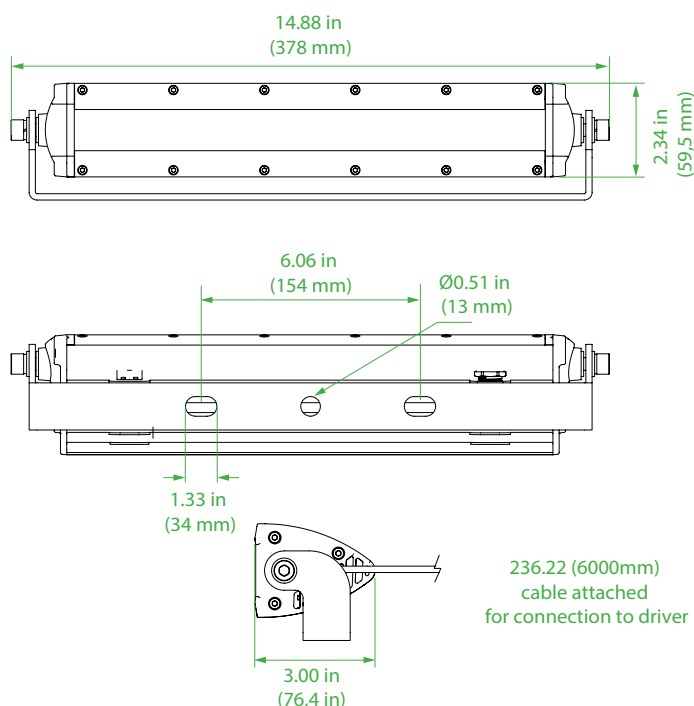


FLLB Series

Flood LED Light Bar 30Watt 4.200Lumens

*LED flood lights applicable for decks and technical in- and outdoor applications. Supplied with an external dimmable driver.
Available with 360° rotatable bracket or stacking brackets.*

Dimensions



Technical Information

Material:	Powder coated anodized seawater resistant aluminium
	White Trim Ring (optional colours on request *1)
Finish:	White
Hardware:	
Lens:	100°
IP Rating:	IP67
Light Source:	30Watt
	140Lumens per Watt
	Natural White 3900K
	CRI > 85
Power Source:	External driver
	100-305Vac 50 ~60Hz (10-30Vdc optional)
	Meanwell HLG-40H-48B
	Dimmable driver (0-10Vdc – PWM – resistance)
	Potted driver
Ambient Temperature:	Operating Temperature -40°C ~ +55°
Cable :	Supplied with 6mtr 2 x 1.5mm power cable to external driver
Mounting:	Adjustable A4 316 Stainless Steel bracket
	thickness (optional 360° rotatable bracket available *1)
	(optional stacking brackets available *2)
Fixture weight:	7.05 lbs (3,2 kg)

Compliances

In compliance with rules of maritime classification societies, additional VDE and IEC 60092-306.
(Equipment luminaires and lighting accessories for use on vessels)

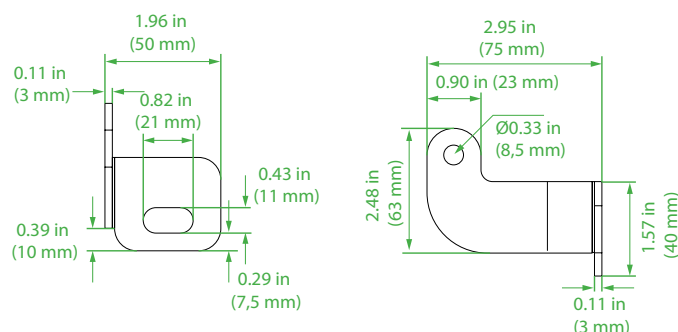
FLLB Series

Flood LED Light Bar 30Watt 4.200Lumens

Ordering information

Article No.:	Beam Angle	Light Colour	Voltage	Finish	Specialties
FLLB-030-39WH-HV	Wide Beam 100°	3900K Natural White	100-305Vac 50 ~60Hz	White	Supplied with dimmable external driver
FLLB-030-39WH-LV	Wide Beam 100°	3900K Natural White	10-30Vdc	White	Supplied with dimmable external driver
FLLB-030-39WH-RT-HV	Wide Beam 100°	3900K Natural White	100-305Vac 50 ~60Hz	White	Supplied with dimmable external driver
FLLB-030-39WH-RT-LV	Wide Beam 100°	3900K Natural White	10-30Vdc	White	Supplied with dimmable external driver

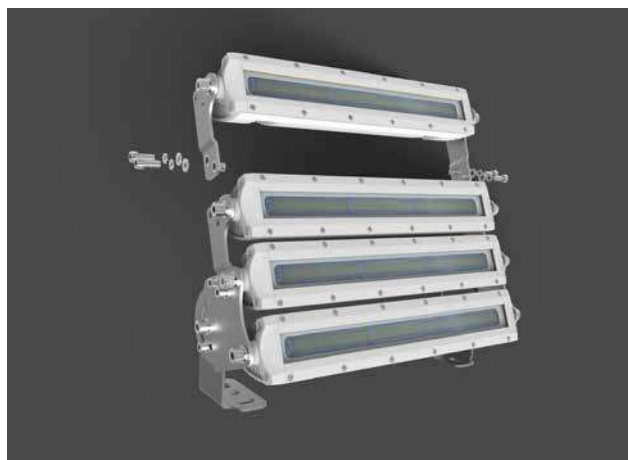
*1 Optional 360° rotatable bracket:



*2 Optional stacking brackets:

For stacking two lights you need a FLLB-SB-BASE Set

For stacking three lights you need a FLLB-SB-TOP Set, for extra lights an extra FLLB-SB-TOP Set is required



Special Projects

We may be able to accommodate your special projects, so please don't hesitate to ask about additional options. Minimum order quantities and/or extended lead times will apply. Contact your E-LED Lighting representative with specific inquiries.

Product design and specifications are subject to change without notice. The most current specification sheets can be found at www.E-LEDLighting.com

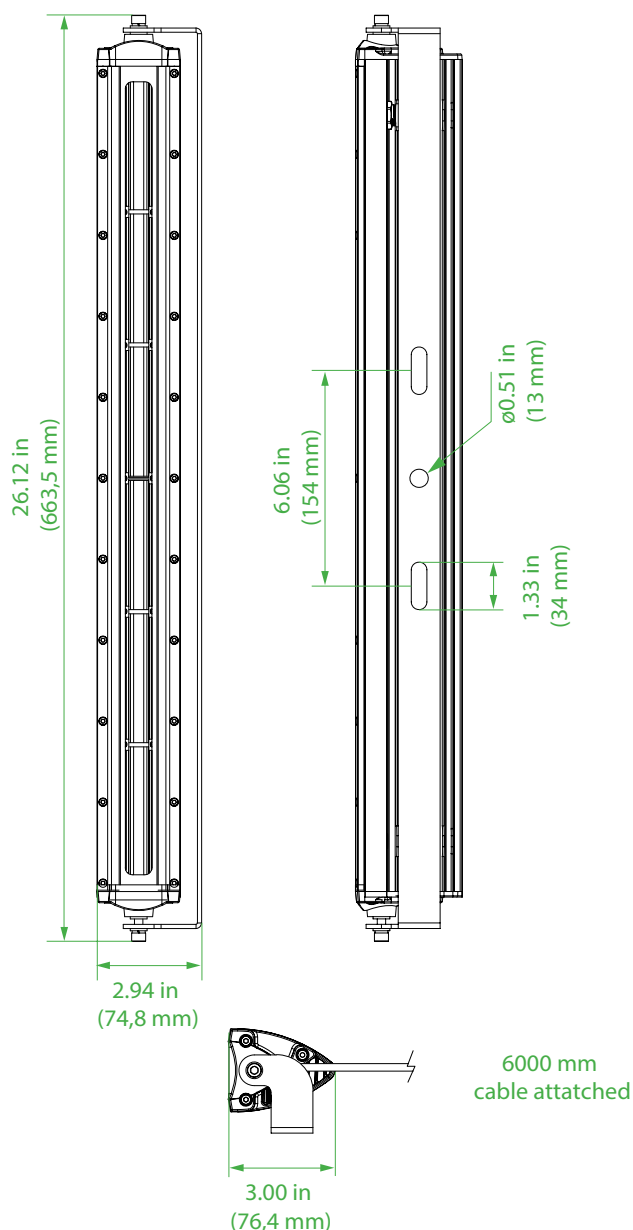
FLLB Series

Flood LED Light Bar 60Watt 8.400Lumens

*LED flood lights applicable for decks and technical in- and outdoor applications. Supplied with an external dimmable driver.
Available with 360° rotatable bracket or stacking brackets.*



Dimensions



Technical Information

Material:	Powder coated anodized seawater resistant aluminium
	White Trim Ring (optional colours on request *1)
Finish:	White
Hardware:	Marine grade A4 316 stainless steel
Lens:	100°
IP Rating:	IP67
Light Source:	60Watt
	140Lumens per Watt
	Natural White 3900K
	CRI > 85
Power Source:	External driver
	100-305Vac 50 ~60Hz (10-30Vdc optional)
	Meanwell HLG-60H-42B
	Dimmable driver (0-10Vdc – PWM – resistance)
	Potted driver
Ambient Temperature:	Operating Temperature -40°C ~ +55°
Cable :	Supplied with 6mtr 2 x 1.5mm power cable to external driver
Mounting:	Adjustable A4 316 Stainless Steel bracket
	4mm thickness (optional 360° rotatable bracket available *1)
	(optional stacking brackets available *2)
Fixture weight:	10.03 lbs (4,55 kg)

Compliances

In compliance with rules of maritime classification societies, additional VDE and IEC 60092-306.
(Equipment luminaires and lighting accessories for use on vessels)

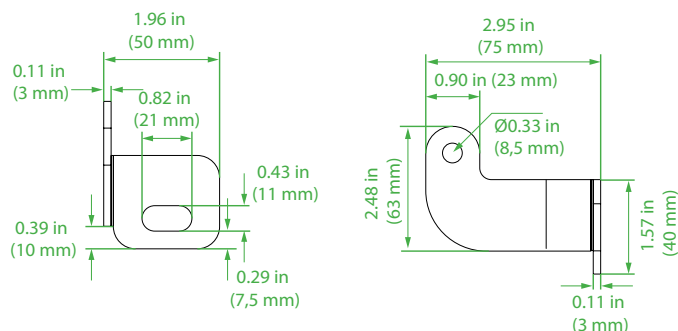
FLLB Series

Flood LED Light Bar 60Watt 8.400Lumens

Ordering information

Article No.:	Beam Angle	Light Colour	Voltage	Finish	Specialties
FLLB-060-39WH-HV	Wide Beam 100°	3900K Natural White	100-305Vac 50 ~60Hz	White	Supplied with external dimmable driver
FLLB-060-39WH-LV	Wide Beam 100°	3900K Natural White	10-30Vdc	White	Supplied with external dimmable driver
FLLB-060-39WH-RT-HV	Wide Beam 100°	3900K Natural White	100-305Vac 50 ~60Hz	White	Supplied with external dimmable driver
FLLB-060-39WH-RT-LV	Wide Beam 100°	3900K Natural White	10-30Vdc	White	Supplied with external dimmable driver

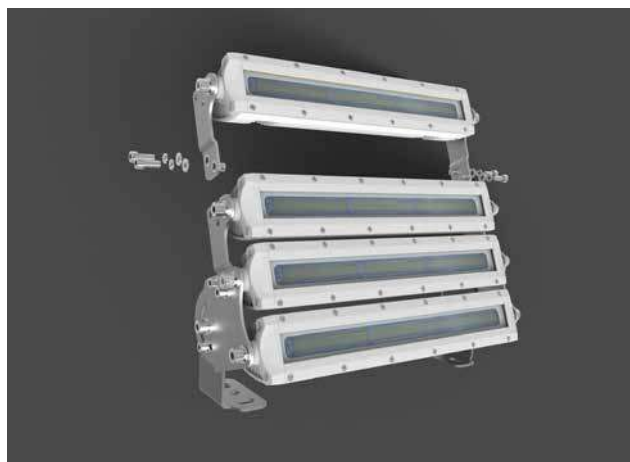
*1 Optional 360° rotatable bracket:



*2 Optional stacking brackets:

For stacking two lights you need a FLLB-SB-BASE Set

For stacking three lights you need a FLLB-SB-TOP Set, for extra lights an extra FLLB-SB-TOP Set is required



Special Projects

We may be able to accommodate your special projects, so please don't hesitate to ask about additional options. Minimum order quantities and/or extended lead times will apply. Contact your E-LED Lighting representative with specific inquiries.

Product design and specifications are subject to change without notice. The most current specification sheets can be found at www.E-LEDLighting.com

E-LED Lighting BV & Inc.

European Office: Tel: +31 (0)346 28 62 62, E-mail Info@E-LEDLighting.com

United States Office: Tel: +1 (561) 776-1702, E-mail Info@E-LEDLighting.com

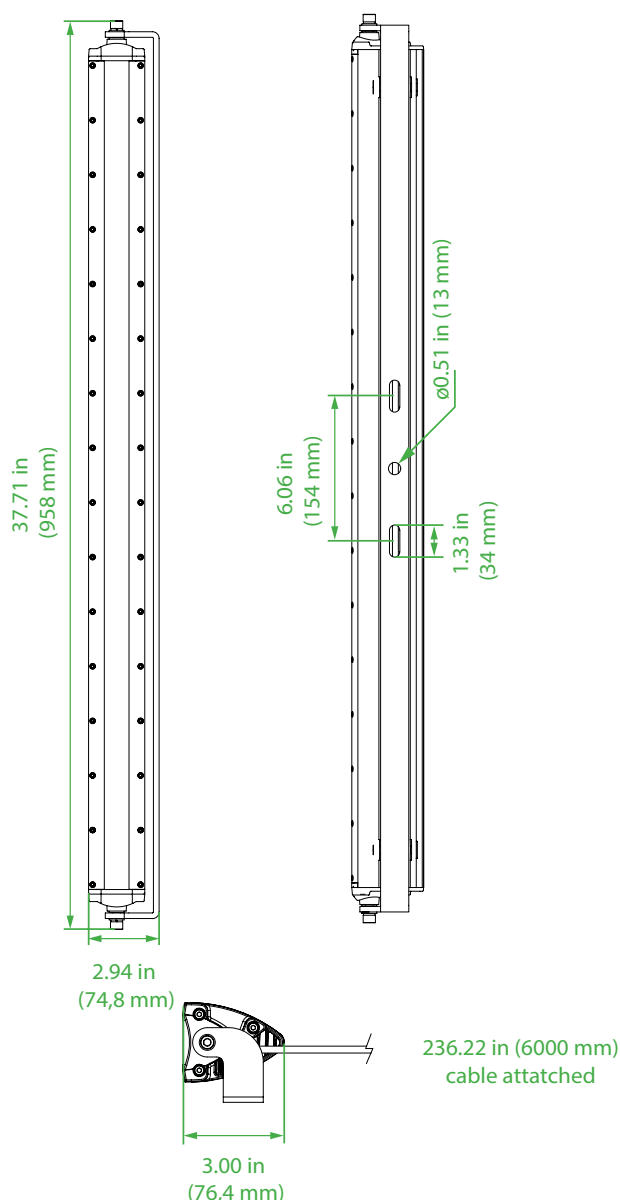
FLLB Series

Flood LED Light Bar 90Watt 12.600Lumens

*LED flood lights applicable for decks and technical in- and outdoor applications. Supplied with an external dimmable driver.
Available with 360° rotatable bracket or stacking brackets.*



Dimensions



Technical Information

Material:	Powder coated anodized seawater resistant aluminium
	White Trim Ring (optional colours on request *1)
Finish:	White
Hardware:	Marine grade A4 316 stainless steel
Lens:	100°
IP Rating:	IP67
Light Source:	90Watt
	140Lumens per Watt
	Natural White 3900K
	CRI > 85
Power Source:	External driver
	100-305Vac 50 ~60Hz
	Meanwell HLG-100H-42B
	Dimmable driver
	Potted driver
Ambient Temperature:	Operating Temperature -40°C ~ +55°
Cable :	Supplied with 6mtr 2 x 1.5mm power cable to external driver
Mounting:	Adjustable A4 316 Stainless Steel bracket
	4mm thickness (optional 360° rotatable bracket available *1)
	(optional stacking brackets available *2)
Fixture weight:	14.88 lbs (6,75 kg)

Compliances

In compliance with rules of maritime classification societies, additional VDE and IEC 60092-306.
(Equipment luminaires and lighting accessories for use on vessels)

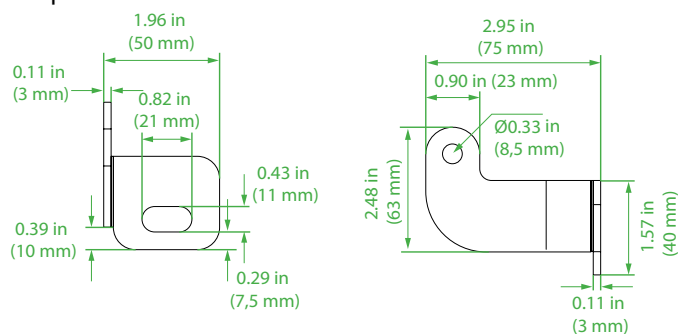
FLLB Series

Flood LED Light Bar 90Watt 12.600Lumens

Ordering information

Article No.:	Beam Angle	Light Colour	Voltage	Finish	Specialties
FLLB-090-39WH-HV	Wide Beam 100°	3900K Natural White	100-305Vac 50 ~60Hz	White	Supplied with external dimmable driver
FLLB-090-39WH-RT-HV	Wide Beam 100°	3900K Natural White	100-305Vac 50 ~60Hz	White	Supplied with external dimmable driver

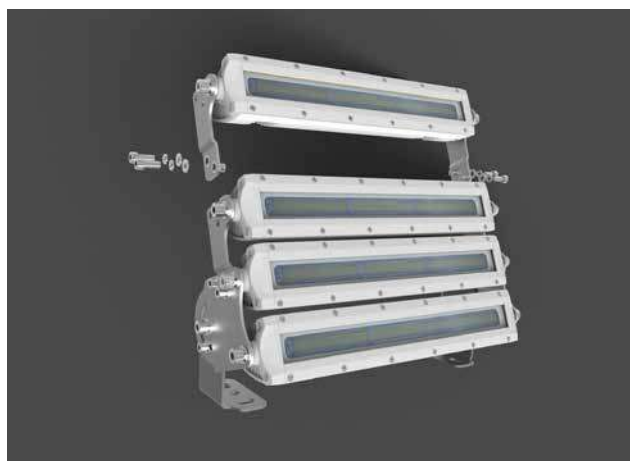
*1 Optional 360° rotatable bracket:



*2 Optional stacking brackets:

For stacking two lights you need a FLLB-SB-BASE Set

For stacking three lights you need a FLLB-SB-TOP Set, for extra lights an extra FLLB-SB-TOP Set is required



Special Projects

We may be able to accommodate your special projects, so please don't hesitate to ask about additional options. Minimum order quantities and/or extended lead times will apply. Contact your E-LED Lighting representative with specific inquiries.

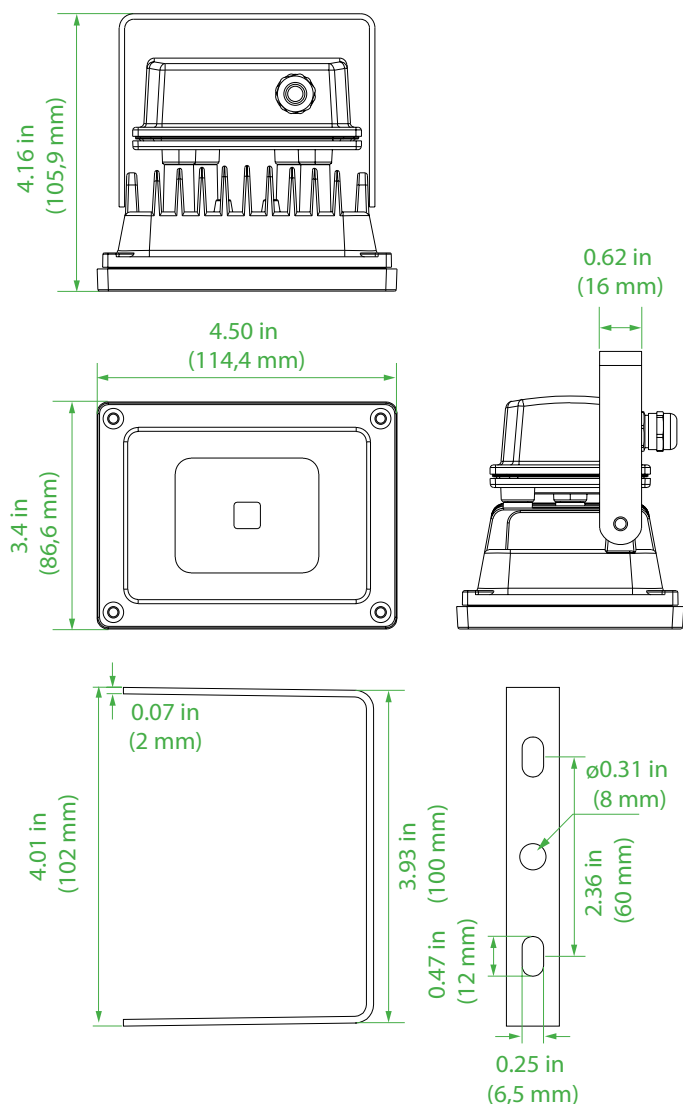
FL Series

Marine LED Floodlight 10Watt 1.200Lumens

LED flood lights applicable for decks and technical in- and outdoor applications.



Dimensions



Technical Information

Material:	Powder coated anodized seawater resistant aluminium
Finish:	White
Hardware:	Marine grade A4 316 stainless steel
Lens:	80°
IP Rating:	IP67
Light Source:	10Watt
	120Lumens per Watt
	Natural White 3900K
	CRI > 85
Power Source:	85-265Vac 50 ~60Hz (10-30Vdc optional)
	Overload, over-voltage, over-temperature and short circuit protection.
	Potted driver
Ambient Temperature:	Operating temperature -40°C ~ +55°
Cable Entry:	1 x M20 Cable Gland Polyamide (PA)
Mounting:	Adjustable A4 316 Stainless Steel bracket
	0.11 in (3 mm) thickness
Fixture weight:	1.43 lbs (0,65 kg)

Compliances

In compliance with rules of maritime classification societies,
additional VDE and IEC 60092-306.
(Equipment luminaires and lighting accessories for use on vessels)

FL Series

Marine LED Floodlight 10Watt 1.200Lumens

Ordering information

Article No.:	Beam Angle	Light Colour	Voltage	Finish	Specialties
FL020212-HV	Wide Beam 80°	3900K Natural White	85-265Vac 50 ~60Hz	White	
FL020212-LV	Wide Beam 80°	3900K Natural White	10-30Vdc	White	

Special Projects

We may be able to accommodate your special projects, so please don't hesitate to ask about additional options. Minimum order quantities and/or extended lead times will apply. Contact your E-LED Lighting representative with specific inquiries.

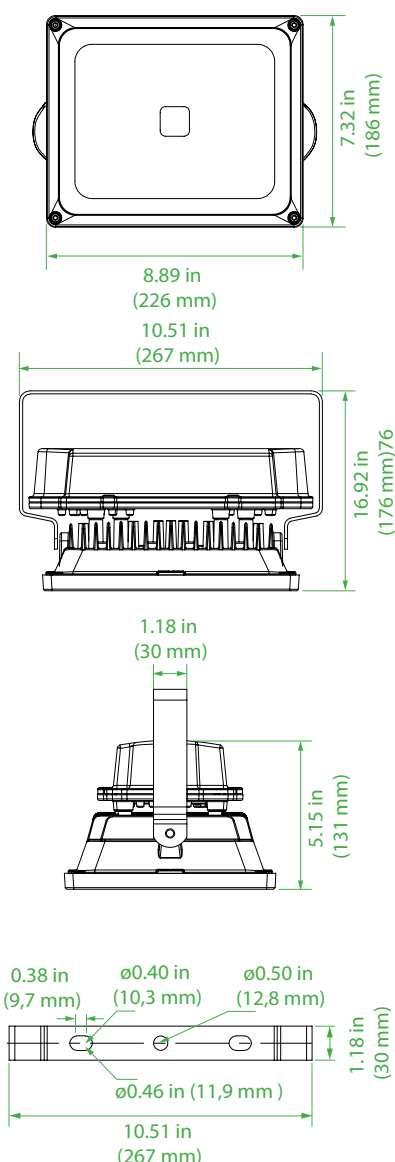
FL Series

Marine LED Floodlight 30Watt 3.600Lumens

LED flood lights applicable for decks and technical in- and outdoor applications.



Dimensions



Technical Information

Material:	Powder coated anodized seawater resistant aluminium
Finish:	White
Hardware:	Marine grade A4 316 stainless steel
Lens:	100°
IP Rating:	IP67
Light Source:	30Watt 120Lumens per Watt Natural White 3900K CRI > 85
Power Source:	100-305Vac 50 ~60Hz (10-30Vdc optional) Meanwell LPF-40-36 Overload, over-voltage, over-temperature and short circuit protection. Potted driver
Ambient Temperature:	Operating temperature -40°C ~ +55°
Cable Entry:	1 x M20 Cable Gland Polyamide (PA)
Mounting:	Adjustable A4 316 Stainless Steel bracket 0.15 in (4 mm) thickness
Fixture weight:	7.38 lbs (3,35 kg)

Compliances

In compliance with rules of maritime classification societies, additional VDE and IEC 60092-306.
(Equipment luminaires and lighting accessories for use on vessels)

FL Series

Marine LED Floodlight 30Watt 3.600Lumens

Ordering information

Article No.:	Beam Angle	Light Colour	Voltage	Finish	Specialties
FL030314-HV	Wide Beam 100°	3900K Natural White	100-305Vac 50 ~60Hz	White	
FL030314-LV	Wide Beam 100°	3900K Natural White	100-305Vac 50 ~60Hz	White	

Special Projects

We may be able to accommodate your special projects, so please don't hesitate to ask about additional options. Minimum order quantities and/or extended lead times will apply. Contact your E-LED Lighting representative with specific inquiries.

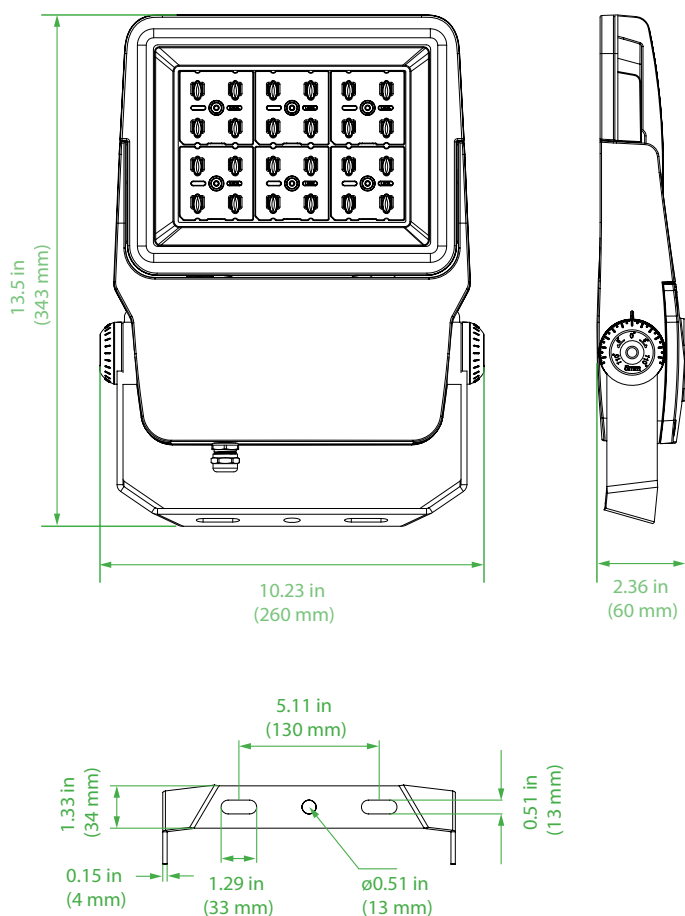
FLNG Series

Marine LED Floodlight 50Watt 8.000Lumens

LED flood lights applicable for decks and technical in- and outdoor applications.



Dimensions



Technical Information

Material:	Powder coated anodized seawater resistant aluminium
Finish:	White
Hardware:	Marine grade A4 316 stainless steel
Lens:	90° standard, 30°- and 60° optional
IP Rating:	IP67
Light Source:	50Watt 160Lumens per Watt Natural White 3900K CRI > 85
Power Source:	90-305Vac 50-60Hz (10-30Vdc optional) Meanwell HLG-60H-48B Dimmable driver (0-10Vdc – PWM – resistance) Overload, over-voltage, over-temperature and short circuit protection. Potted driver
Ambient Temperature:	Operating Temperature -40°C ~ +55°C
Cable Entry:	1 x M20 Cable Gland Nickel plated brass
Mounting:	Adjustable A4 316 Stainless Steel bracket 0.15 in (4 mm) thickness
Fixture weight:	7.49 lbs (3,4 kg)

Compliances

In compliance with rules of maritime classification societies, additional VDE and IEC 60092-306.
(Equipment luminaires and lighting accessories for use on vessels)

FLNG Series

Marine LED Floodlight 50Watt 8.000Lumens

Ordering information

Article No.:	Beam Angle	Light Colour	Voltage	Finish	Specialties
FLNG-050-39WH-03HV	Small beam 30°	3900K Natural White	100-305Vac 50 ~60Hz	White	Supplied with dimmable driver
FLNG-050-39WH-06HV	Medium beam 60°	3900K Natural White	100-305Vac 50 ~60Hz	White	Supplied with dimmable driver
FLNG-050-39WH-09HV (standard)	Wide beam 90°	3900K Natural White	100-305Vac 50 ~60Hz	White	Supplied with dimmable driver
FLNG-050-39WH-03LV	Small beam 30°	3900K Natural White	10-30Vdc	White	
FLNG-050-39WH-06LV	Medium beam 60°	3900K Natural White	10-30Vdc	White	
FLNG-050-39WH-09LV (standard)	Wide beam 90°	3900K Natural White	10-30Vdc	White	

Special Projects

We may be able to accommodate your special projects, so please don't hesitate to ask about additional options. Minimum order quantities and/or extended lead times will apply. Contact your E-LED Lighting representative with specific inquiries.

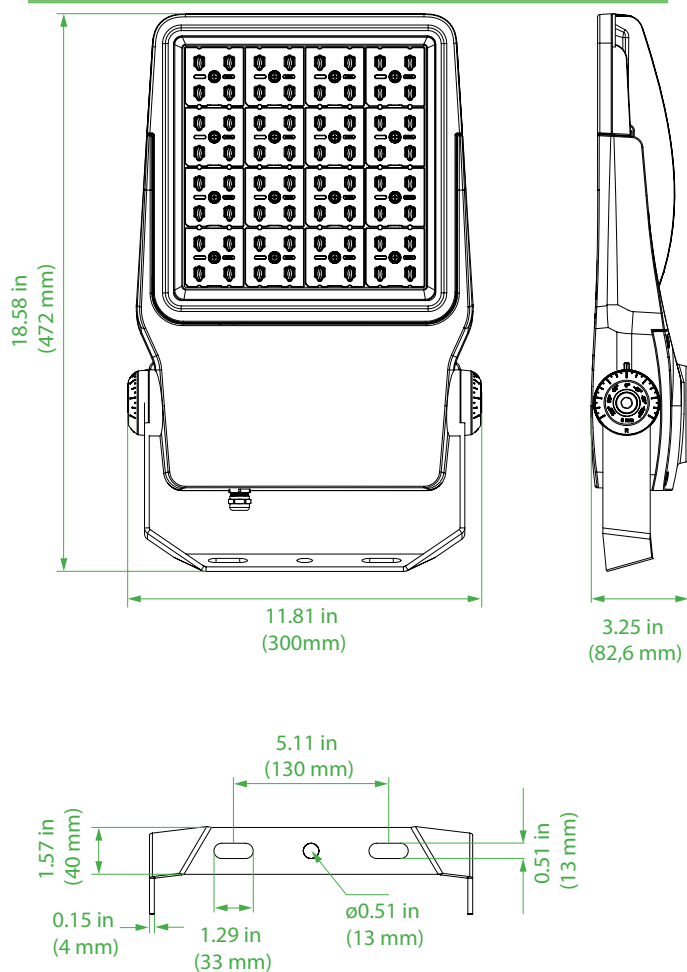
FLNG Series

Marine LED Floodlight 100Watt 100-305Vac 16.000Lumens

LED flood lights applicable for decks and technical in- and outdoor applications.



Dimensions



Technical Information

Material:	Powder coated anodized seawater resistant aluminium
Finish:	White
Hardware:	Marine grade A4 316 stainless steel
Lens:	90° standard, 30°- and 60° optional
IP Rating:	IP67
Light Source:	100Watt 160Lumens per Watt Natural White 3900K CRI > 85
Power Source:	Meanwell HLG-120H-C500B 90-305Vac 50~60Hz Dimmable driver (0-10Vdc – PWM – resistance) Overload, over-voltage, over-temperature and short circuit protection. Potted driver
Ambient Temperature:	Operating Temperature -40°C ~ +55°C
Cable Entry:	1 x M20 Cable Gland Nickel plated brass
Mounting:	Adjustable A4 316 Stainless Steel bracket 0.23 in (6 mm) thickness
Fixture weight:	15.21 lbs (6,9 kg)

Compliances

In compliance with rules of maritime classification societies, additional VDE and IEC 60092-306.
(Equipment luminaires and lighting accessories for use on vessels)

FLNG Series

Marine LED Floodlight 100Watt 100-305Vac 16.000Lumens

Ordering information

Article No.:	Beam Angle	Light Colour	Voltage	Finish	Specialties
FLNG-100-39WH-03HV	Small beam 30°	3900K Natural White	90-305Vac 50 ~60Hz	White	Supplied with dimmable driver
FLNG-100-39WH-06HV	Medium beam 60°	3900K Natural White	90-305Vac 50 ~60Hz	White	Supplied with dimmable driver
FLNG-100-39WH-09HV (standard)	Wide beam 90°	3900K Natural White	90-305Vac 50 ~60Hz	White	Supplied with dimmable driver

Special Projects

We may be able to accommodate your special projects, so please don't hesitate to ask about additional options. Minimum order quantities and/or extended lead times will apply. Contact your E-LED Lighting representative with specific inquiries.

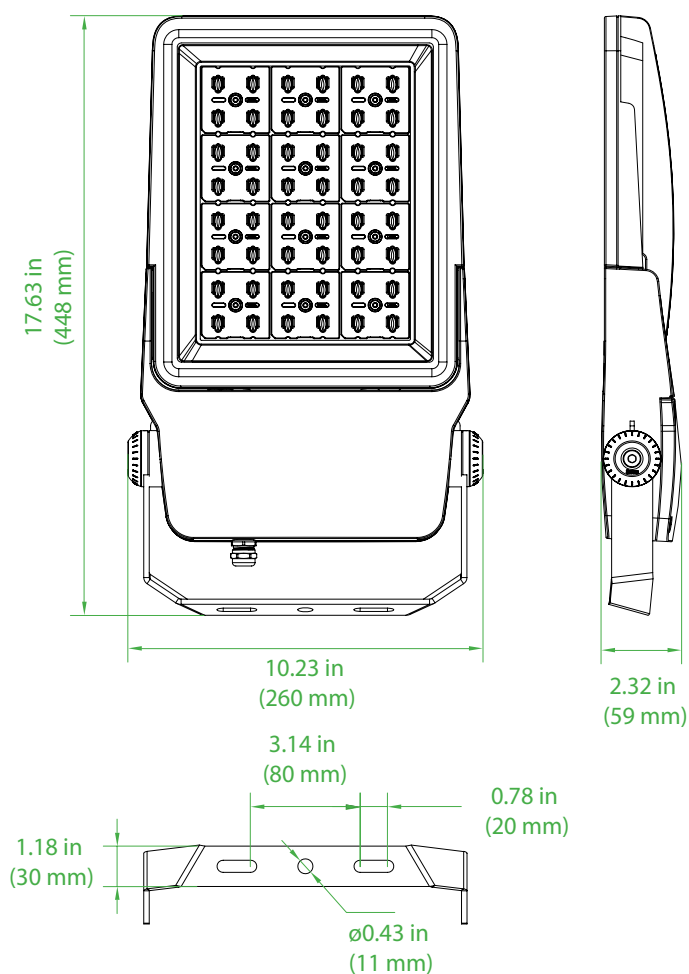
FLNG Series

Marine LED Floodlight 100Watt 24Vdc 15.000Lumens

LED flood lights applicable for decks and technical in- and outdoor applications.



Dimensions



Technical Information

Material:	Powder coated anodized seawater resistant aluminium
Finish:	White
Hardware:	Marine grade A4 316 stainless steel
Lens:	90° standard, 30°- and 60° optional
IP Rating:	IP67
Light Source:	100Watt 150Lumens per Watt Natural White 3900K CRI > 85
Power Source:	Epever LS102460LPLI 20-30Vdc Potted driver
Ambient Temperature:	Operating Temperature -40°C ~ +55°C
Cable Entry:	1 x M20 Cable Gland Nickel plated brass
Mounting:	Adjustable A4 316 Stainless Steel bracket 0.23 in (6 mm) thickness
Fixture weight:	9.25 lbs (4,2 kg)

Compliances

In compliance with rules of maritime classification societies, additional VDE and IEC 60092-306.
(Equipment luminaires and lighting accessories for use on vessels)

FLNG Series

Marine LED Floodlight 100Watt 24Vdc 15.000Lumens

Ordering information

Article No.:	Beam Angle	Light Colour	Voltage	Finish	Specialties
FLNG-100-39WH-03LV	Small beam 30°	3900K Natural White	20-30Vdc	White	
FLNG-100-39WH-06LV	Medium beam 60°	3900K Natural White	20-30Vdc	White	
FLNG-100-39WH-09LV (standard)	Wide beam 90°	3900K Natural White	20-30Vdc	White	

Special Projects

We may be able to accommodate your special projects, so please don't hesitate to ask about additional options. Minimum order quantities and/or extended lead times will apply. Contact your E-LED Lighting representative with specific inquiries.

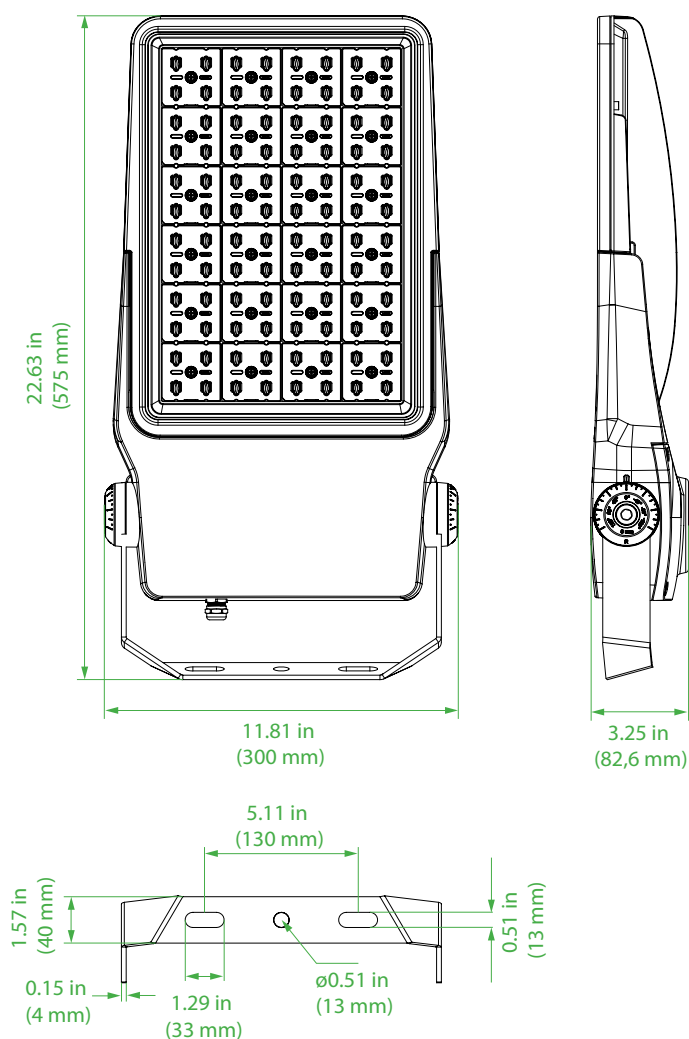
FLNG Series

Marine LED Floodlight 150Watt 24.000Lumens

LED flood lights applicable for decks and technical in- and outdoor applications.



Dimensions



Technical Information

Material:	Powder coated anodized seawater resistant aluminium
Finish:	White
Hardware:	Marine grade A4 316 stainless steel
Lens:	90° standard, 30°- and 60° optional
IP Rating:	IP67
Light Source:	150Watt 160Lumens per Watt Natural White 3900K CRI > 85
Power Source:	Meanwell HLG-185H-C1050B 90-305Vac 50~60Hz Dimmable driver (0-10Vdc – PWM – resistance) Overload, over-voltage, over-temperature and short circuit protection. Potted driver
Ambient Temperature:	Operating Temperature -40°C ~ +55°C
Cable Entry:	1 x M20 Cable Gland Nickel plated brass
Mounting:	Adjustable A4 316 Stainless Steel bracket 0.23 in (6 mm) thickness
Fixture weight:	18.29 lbs (8,3 kg)

Compliances

In compliance with rules of maritime classification societies, additional VDE and IEC 60092-306.
(Equipment luminaires and lighting accessories for use on vessels)

FLNG Series

Marine LED Floodlight 150Watt 24.000Lumens

Ordering information

Article No.:	Beam Angle	Light Colour	Voltage	Finish	Specialties
FLNG-150-39WH-03HV	Small beam 30°	3900K Natural White	90-305Vac 50 ~60Hz	White	Supplied with dimmable driver
FLNG-150-39WH-06HV	Medium beam 60°	3900K Natural White	90-305Vac 50 ~60Hz	White	Supplied with dimmable driver
FLNG-150-39WH-09HV (standard)	Wide beam 90°	3900K Natural White	90-305Vac 50 ~60Hz	White	Supplied with dimmable driver

Special Projects

We may be able to accommodate your special projects, so please don't hesitate to ask about additional options. Minimum order quantities and/or extended lead times will apply. Contact your E-LED Lighting representative with specific inquiries.

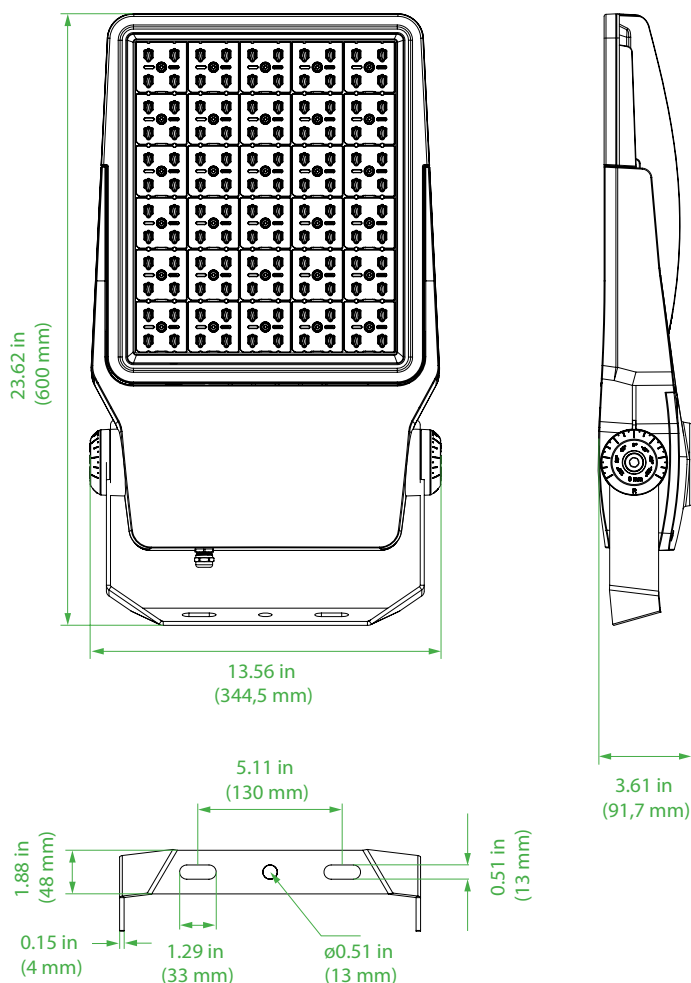
FLNG Series

Marine LED Floodlight 200Watt 32.000Lumens

LED flood lights applicable for decks and technical in- and outdoor applications.



Dimensions



Technical Information

Material:	Powder coated anodized seawater resistant aluminium
Finish:	White
Hardware:	Marine grade A4 316 stainless steel
Lens:	60° standard, 30°- and 90° optional
IP Rating:	IP67
Light Source:	200Watt 160Lumens per Watt Natural White 3900K CRI > 85
Power Source:	Meanwell HLG-240H-C1050B 90-305Vac 50~60Hz Dimmable driver (0-10Vdc – PWM – resistance) Overload, over-voltage, over-temperature and short circuit protection. Potted driver
Ambient Temperature:	Operating Temperature -40°C ~ +55°C
Cable Entry:	1 x M20 Cable Gland Nickel plated brass
Mounting:	Adjustable A4 316 Stainless Steel bracket 0.23 in (6 mm) thickness
Fixture weight:	24.25 lbs (11 kg)

Compliances

In compliance with rules of maritime classification societies, additional VDE and IEC 60092-306.
(Equipment luminaires and lighting accessories for use on vessels)

FLNG Series

Marine LED Floodlight 200Watt 32.000Lumens

Ordering information

Article No.:	Beam Angle	Light Colour	Voltage	Finish	Specialties
FLNG-200-39WH-03HV	Small beam 30°	3900K Natural White	90-305Vac 50 ~60Hz	White	Supplied with dimmable driver
FLNG-200-39WH-06HV (standard)	Medium beam 30°	3900K Natural White	90-305Vac 50 ~60Hz	White	Supplied with dimmable driver
FLNG-200-39WH-09HV	Wide beam 30°	3900K Natural White	90-305Vac 50 ~60Hz	White	Supplied with dimmable driver

Special Projects

We may be able to accommodate your special projects, so please don't hesitate to ask about additional options. Minimum order quantities and/or extended lead times will apply. Contact your E-LED Lighting representative with specific inquiries.

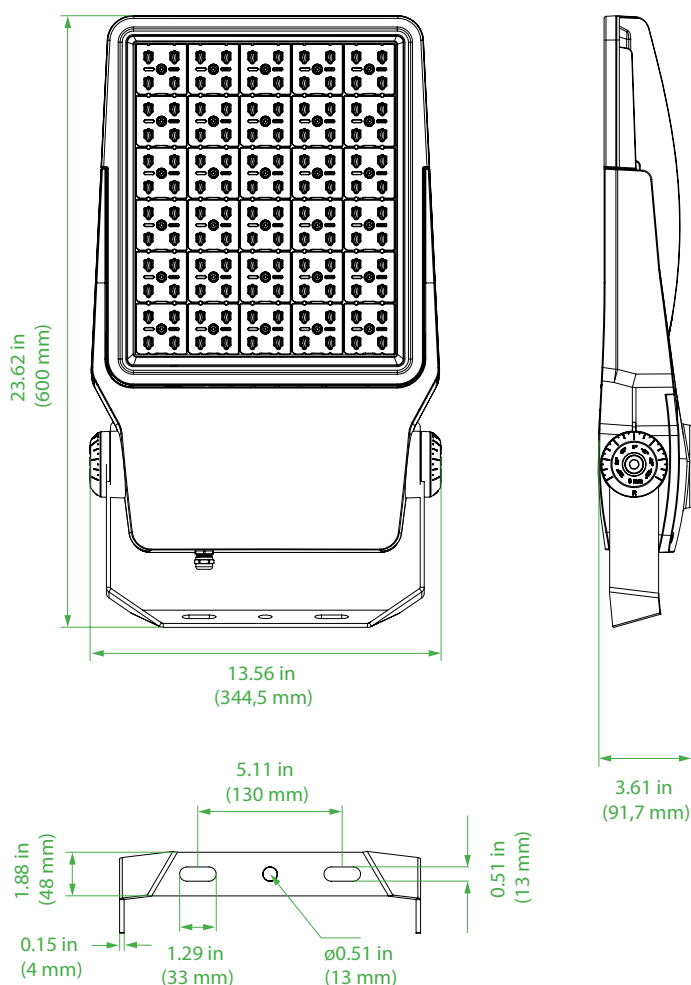
FLNG Series

Marine LED Floodlight 300Watt 48.000Lumens

LED flood lights applicable for decks and technical in- and outdoor applications.



Dimensions



Technical Information

Material:	Powder coated anodized seawater resistant aluminium
Finish:	White
Hardware:	Marine grade A4 316 stainless steel
Lens:	60° standard, 30°- and 90° optional
IP Rating:	IP67
Light Source:	300Watt 160Lumens per Watt Natural White 3900K CRI > 85
Power Source:	Meanwell HLG-320H-C1050B 90-305Vac 50-60Hz Dimmable driver (0-10Vdc – PWM – resistance) Overload, over-voltage, over-temperature and short circuit protection. Potted driver
Ambient Temperature:	Operating Temperature -40°C ~ +55°C
Cable Entry:	1 x M20 Cable Gland Nickel plated brass
Mounting:	Adjustable A4 316 Stainless Steel bracket 0.23 in (6 mm) thickness
Fixture weight:	25.46 lbs (11,55 kg)

Compliances

In compliance with rules of maritime classification societies, additional VDE and IEC 60092-306.
(Equipment luminaires and lighting accessories for use on vessels)

FLNG Series

Marine LED Floodlight 300Watt 48.000Lumens

Ordering information

Article No.:	Beam Angle	Light Colour	Voltage	Finish	Specialties
FLNG-300-39WH-03HV	Small Beam 30°	3900K Natural White	100-305Vac 50~60Hz	White	Standard supplied with dimmable driver
FLNG-300-39WH-06HV (standard)	Medium Beam 60°	3900K Natural White	100-305Vac 50~60Hz	White	Standard supplied with dimmable driver
FLNG-300-39WH-09HV	Wide Beam 90°	3900K Natural White	100-305Vac 50~60Hz	White	Standard supplied with dimmable driver

Special Projects

We may be able to accommodate your special projects, so please don't hesitate to ask about additional options. Minimum order quantities and/or extended lead times will apply. Contact your E-LED Lighting representative with specific inquiries.

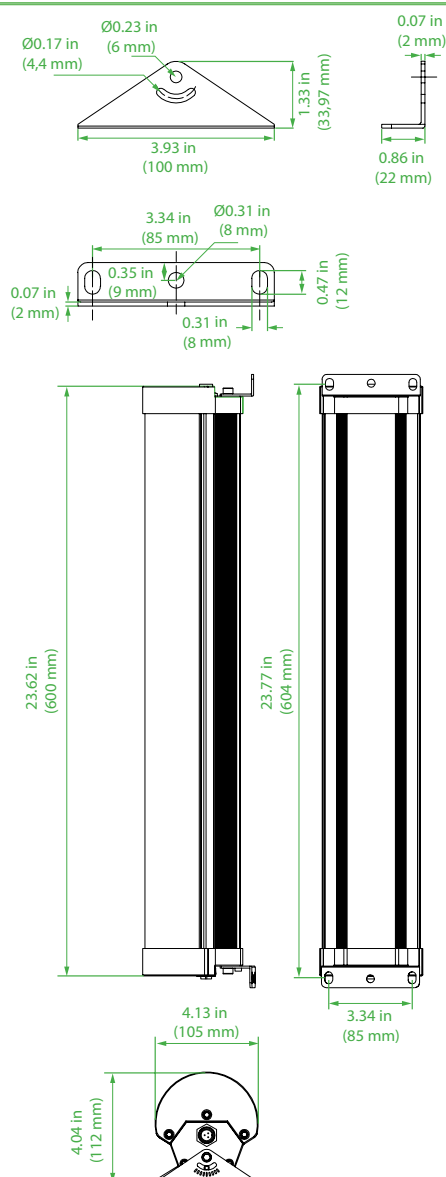
RTPL Series

Robust LED Tri-Proof Light 30Watt 3.900Lumens

Robust LED Tri-Proof Light applicable for a wide range of interior- and exterior applications such as engine rooms, technical areas, work-shops, stores, passage way, decks, etc. Available with 5Watt 20-30Vdc emergency circuit.



Dimensions



Technical Information

Material:	Anodized seawater resistant aluminium and polycarbonate cover
Hardware:	Marine grade A4 316 stainless steel
Lens:	230°
IP Rating:	IP66
Light Source:	30Watt 130Lumens per Watt Natural White 3900K CRI > 85
Power Source:	90-305Vac 50-60Hz (10-30Vdc or 20-30Vdc emergency circuit optional) Meanwell LPF-40-48 Overload, over-voltage, over-temperature and short circuit protection. Potted driver
Ambient Temperature:	Operating temperature -40°C ~ +55°
Cable Entry:	2 x M20 fast connecting glands with internal 3-pole terminal block Max. 4pcs fast connecting glands can be installed) *1
Mounting:	Adjustable A4 316 Stainless Steel brackets (optional A4 316 Stainless Steel re-fit brackets available *2)
Fixture weight:	5.95 lbs (2,7kg)

Compliances

ETL certified

In compliance with rules of maritime classification societies, additional VDE and IEC 60092-306.

(Equipment luminaires and lighting accessories for use on vessels)

RTPL Series

Robust LED Tri-Proof Light 30Watt 3.900Lumens

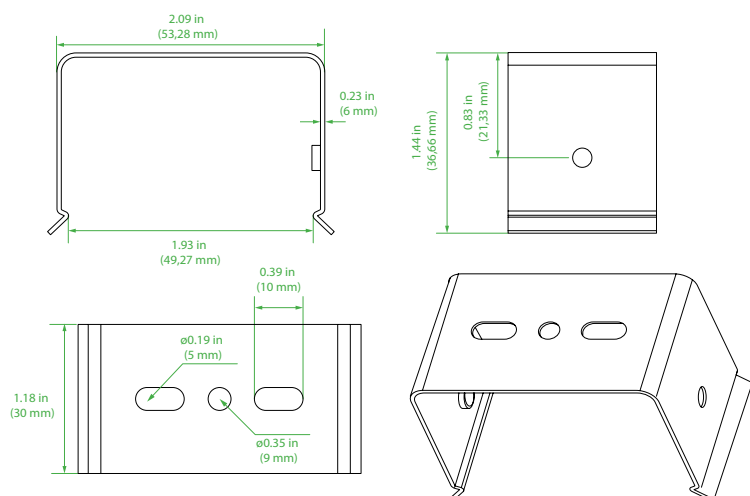
Ordering information

Article No.:	Beam Angle	Light Colour	Voltage	Finish	Specialties
RTPL-30W-39-60-HV	Wide beam 230°	3900K Natural White	100-305Vac 50~60Hz	Transparent white + Black	Standard supplied with M20 fast connecting glands
RTPL-30W-39-60-HV+E	Wide beam 230°	3900K Natural White	100-305Vac 50~60Hz + 20-30Vdc	Transparent white + Black	Standard supplied with M20 fast connecting glands
RTPL-30W-39-60-LV	Wide beam 230°	3900K Natural White	10-30Vdc	Transparent white + Black	Standard supplied with M16 fast connecting glands

*1: Fast connecting glands with 3-pole terminal block:

The use of the fast connecting gland allows wiring the light without opening the fixture. The fixtures will be standard supplied with 2 x M20 fast connecting glands installed one on each end. Optional 2 x M20 fast connecting glands available on both ends.

*2: A4 316 Stainless Steel re-fit brackets available.



Special Projects

We may be able to accommodate your special projects, so please don't hesitate to ask about additional options. Minimum order quantities and/or extended lead times will apply. Contact your E-LED Lighting representative with specific inquiries.

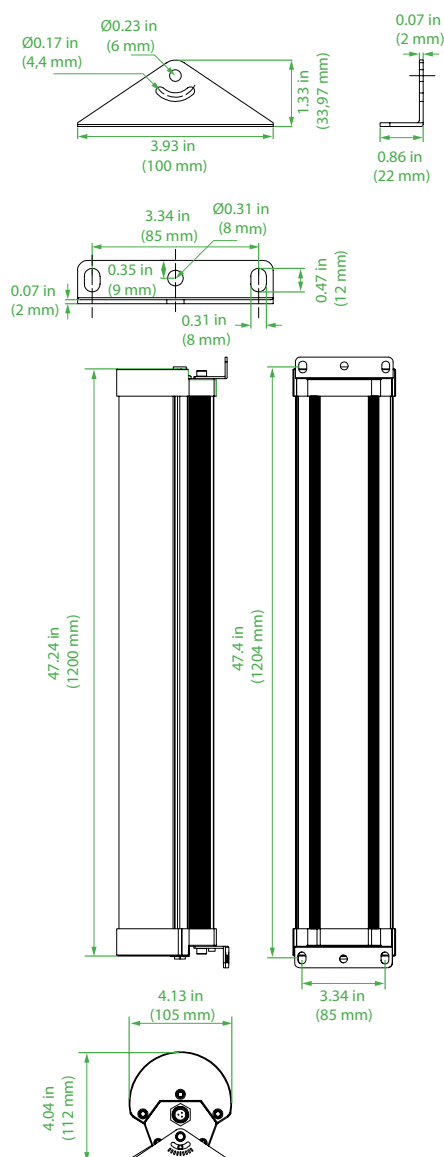
RTPL Series

Robust LED Tri-Proof Light 60Watt 7.800Lumens

Robust LED Tri-Proof Light applicable for a wide range of interior- and exterior applications such as engine rooms, technical areas, work-shops, stores, passage way, decks, etc. Available with 5Watt 20-30Vdc emergency circuit.



Dimensions



Technical Information

Material:	Anodized seawater resistant aluminium and polycarbonate cover
Hardware:	Marine grade A4 316 stainless steel
Lens:	230°
IP Rating:	IP66
Light Source:	60Watt 130Lumens per Watt Natural White 3900K CRI > 85
Power Source:	90-305Vac 50-60Hz (20-30Vdc emergency circuit optional) Meanwell LPF-60-42 Overload, over-voltage, over-temperature and short circuit protection. Potted driver
Ambient Temperature:	Operating temperature -40°C ~ +55°
Cable Entry:	2 x M20 fast connecting glands with internal 3-pole terminal block (Max. 4pcs fast connecting glands can be installed) *1
Mounting:	Adjustable A4 316 Stainless Steel brackets (optional A4 316 Stainless Steel re-fit brackets available *2)
Fixture weight:	8.81 lbs (4 kg)

Compliances

ETL certified

In compliance with rules of maritime classification societies, additional VDE and IEC 60092-306.

(Equipment luminaires and lighting accessories for use on vessels)

RTPL Series

Robust LED Tri-Proof Light 60Watt 7.800Lumens

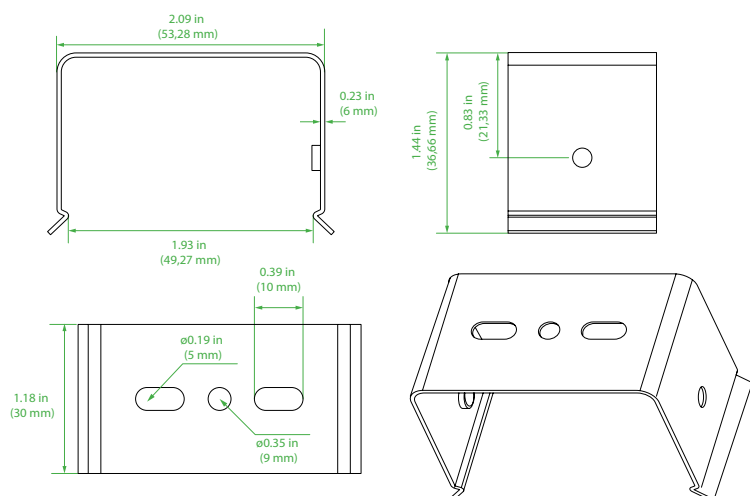
Ordering information

Article No.:	Beam Angle	Light Colour	Voltage	Finish	Specialties
RTPL-60W-39-120-HV	Wide beam 230°	3900K Natural White	100-305Vac 50~60Hz	Transparent white + Black	Standard supplied with M20 fast connecting glands
RTPL-60W-39-120-HV+E	Wide beam 230°	3900K Natural White	100-305Vac 50~60Hz + 20-30Vdc	Transparent white + Black	Standard supplied with M20 fast connecting glands

*1: Fast connecting glands with 3-pole terminal block:

The use of the fast connecting gland allows wiring the light without opening the fixture. The fixtures will be standard supplied with 2 x M20 fast connecting glands installed one on each end. Optional 2 x M20 fast connecting glands available on both ends.

*2: A4 316 Stainless Steel re-fit brackets available.



Special Projects

We may be able to accommodate your special projects, so please don't hesitate to ask about additional options. Minimum order quantities and/or extended lead times will apply. Contact your E-LED Lighting representative with specific inquiries.

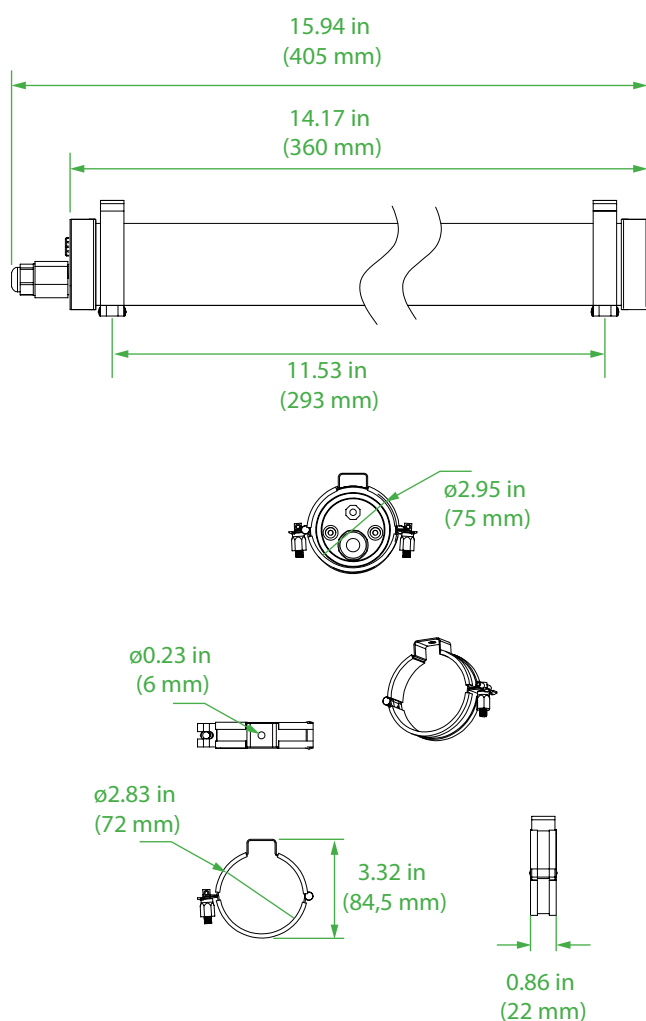
LTPT Series

LED Tube Tri-Proof Light 10Watt 1.500Lumens

LED Tube Tri-Proof Light fixtures for exterior applications such as decks and deck rails. Due the water tightness the LTPT series can be installed on the roughest areas on deck.



Dimensions



Installation brackets can be installed on side caps- or on the polycarbonate cover

Technical Information

Material:	A4 316 stainless steel end caps and polycarbonate cover
Hardware:	Marine grade A4 316 stainless steel
Lens:	180°
IP Rating:	IP69K
Light Source:	10Watt 150Lumens per Watt Natural White 3900K CRI > 85
Power Source:	100-277Vac 50~60Hz Boke BK-BHL022-0600AM Overload, over-voltage, over-temperature and short circuit protection. Potted driver
Ambient Temperature:	Operating temperature -40°C ~ +55°
Cable Entry:	1 x M25 fast connecting glands with internal 5-pole terminal block - *1
Mounting:	Movable A4 316 Stainless Steel brackets
Fixture weight:	1.98 lbs (0,9 kg)

Compliances

In compliance with rules of maritime classification societies, additional VDE and IEC 60092-306.
(Equipment luminaires and lighting accessories for use on vessels)

LTPT Series

LED Tube Tri-Proof Light 10Watt 1.500Lumens

Ordering information

Article No.:	Beam Angle	Light Colour	Voltage	Finish	Specialties
LTPT-10W-39-29-HV	Wide beam 180°	3900K Natural White	100-277Vac 50~60Hz	Transparent White	

*1: Fast connecting glands with 5-pole terminal block:

The use of the fast connecting gland allows wiring the light without opening the fixture.

Special Projects

We may be able to accommodate your special projects, so please don't hesitate to ask about additional options. Minimum order quantities and/or extended lead times will apply. Contact your E-LED Lighting representative with specific inquiries.

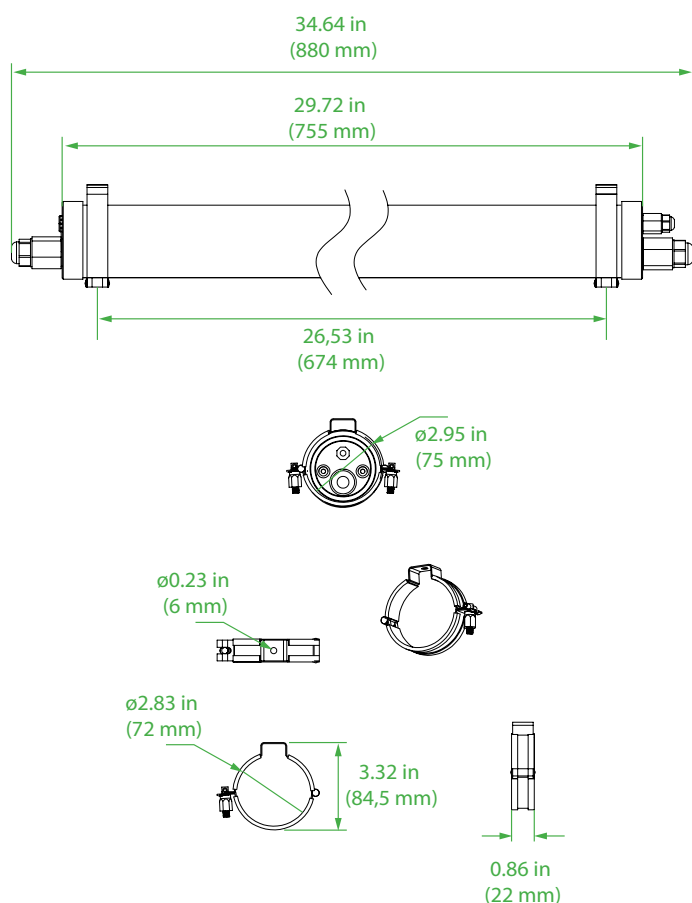
LTPT Series

LED Tube Tri-Proof Light 20Watt 3.000Lumens

LED Tube Tri-Proof Light fixtures for exterior applications such as decks and deck rails. Due the water tightness the LTPT series can be installed on the roughest areas on deck. Standard supplied with 2 x M25 fast connecting glands on both ends for connection in series. Available with 5Watt 20-30Vdc emergency circuit.



Dimensions



Installation brackets can be installed on side caps- or on the polycarbonate cover

Technical Information

Material:	A4 316 stainless steel end caps and polycarbonate cover
Hardware:	Marine grade A4 316 stainless steel
Lens:	180°
IP Rating:	IP69K
Light Source:	20Watt 150Lumens per Watt Natural White 3900K CRI > 85
Power Source:	100-277Vac 50~60Hz (20-30Vdc emergency circuit available) Boke BK-BHL042-1100AM Overload, over-voltage, over-temperature and short circuit protection. Potted driver
Ambient Temperature:	Operating temperature -40°C ~+55°
Cable Entry:	2 x M25 fast connecting glands with internal 5-pole terminal block - *1
Mounting:	Movable A4 316 Stainless Steel brackets
Fixture weight:	3.74 lbs (1,7 kg)

Compliances

In compliance with rules of maritime classification societies, additional VDE and IEC 60092-306.
(Equipment luminaires and lighting accessories for use on vessels)

LTPT Series

LED Tube Tri-Proof Light 20Watt 3.000Lumens

Ordering information

Article No.:	Beam Angle	Light Colour	Voltage	Finish	Specialties
LTPT-20W-39-77-HV	Wide beam 180°	3900K Natural White	100-277Vac 50~60Hz	Transparent White	
LTPT-20W-39-77-HV+E	Wide beam 180°	3900K Natural White	100-277Vac 50~60Hz	Transparent White	Supplied with 5Watt 20-30Vdc emergency circuit

*1: Fast connecting glands with 5-pole terminal block:

The use of the fast connecting gland allows wiring the light without opening the fixture. The fixtures will be standard supplied with 2 x M25 fast connecting glands installed one on each end.

Special Projects

We may be able to accommodate your special projects, so please don't hesitate to ask about additional options. Minimum order quantities and/or extended lead times will apply. Contact your E-LED Lighting representative with specific inquiries.

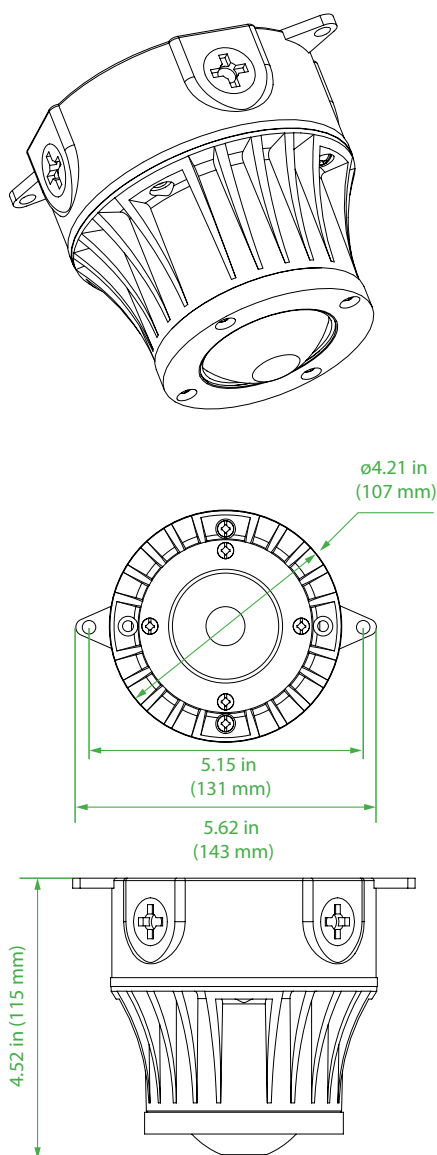
LBY Series

LED Bulleye Lamp Base Mount 12Watt 1.200Lumens

LED Bulleye lamp applicable for decks and technical in- and outdoor applications. Standard supplied with isolating pad.



Dimensions



Technical Information

Material:	Powder coated anodized seawater resistant aluminium
Finish:	White
Lens:	180°
IP Rating:	IP67
Light Source:	12Watt
	100Lumens per Watt
	Natural White 3900K
	CRI > 85
Power Source:	85-265Vac 50 ~60Hz
	Overload, over-voltage, over-temperature and short circuit protection.
	Potted driver
Ambient Temperature:	Operating temperature -40°C ~ +55°
Cable Entry:	5 x M20 Cable Gland Polyamide (PA)
Mounting:	Screw Mount
Fixture weight:	1.43 lbs (0,65 kg)

Compliances

In compliance with rules of maritime classification societies, additional VDE and IEC 60092-306.
(Equipment luminaires and lighting accessories for use on vessels)

LBY Series

LED Bulleye Lamp Base Mount 12Watt 1.200Lumens

Ordering information

Article No.:	Beam Angle	Light Colour	Voltage	Finish	Specialties
LBYB-12-39WH-HV	Wide beam 180°	3900K Natural White	85-265Vac 50~60Hz	White	Base Mount

Special Projects

We may be able to accommodate your special projects, so please don't hesitate to ask about additional options. Minimum order quantities and/or extended lead times will apply. Contact your E-LED Lighting representative with specific inquiries.

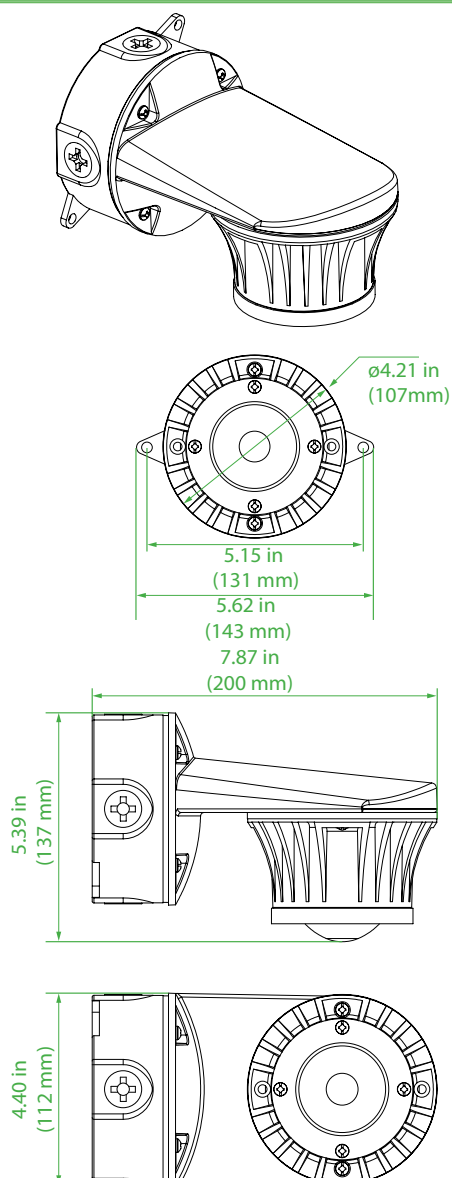
LBY Series

LED Bulleye Lamp Base Mount 12Watt 1.200Lumens

LED Bulleye lamp applicable for decks and technical in- and outdoor applications. Standard supplied with isolating pad.



Dimensions



Technical Information

Material:	Powder coated anodized seawater resistant aluminium
Finish:	White
Lens:	180°
IP Rating:	IP67
Light Source:	12Watt 100Lumens per Watt Natural White 3900K CRI > 85
Power Source:	85-265Vac 50 ~60Hz Overload, over-voltage, over-temperature and short circuit protection. Potted driver
Ambient Temperature:	Operating temperature -40°C ~ +55°
Cable Entry:	5 x M20 Cable Gland Polyamide (PA)
Mounting:	Screw Mount
Fixture weight:	1.43 lbs (0,65 kg)

Compliances

In compliance with rules of maritime classification societies, additional VDE and IEC 60092-306.
(Equipment luminaires and lighting accessories for use on vessels)

LBY Series

LED Bulleye Lamp Base Mount 12Watt 1.200Lumens

Ordering information

Article No.:	Beam Angle	Light Colour	Voltage	Finish	Specialties
LBYS-12-39WH-HV	Wide beam 180°	3900K Natural White	85-265Vac 50~60Hz	White	Side Mount

Special Projects

We may be able to accommodate your special projects, so please don't hesitate to ask about additional options. Minimum order quantities and/or extended lead times will apply. Contact your E-LED Lighting representative with specific inquiries.

FLEX Series

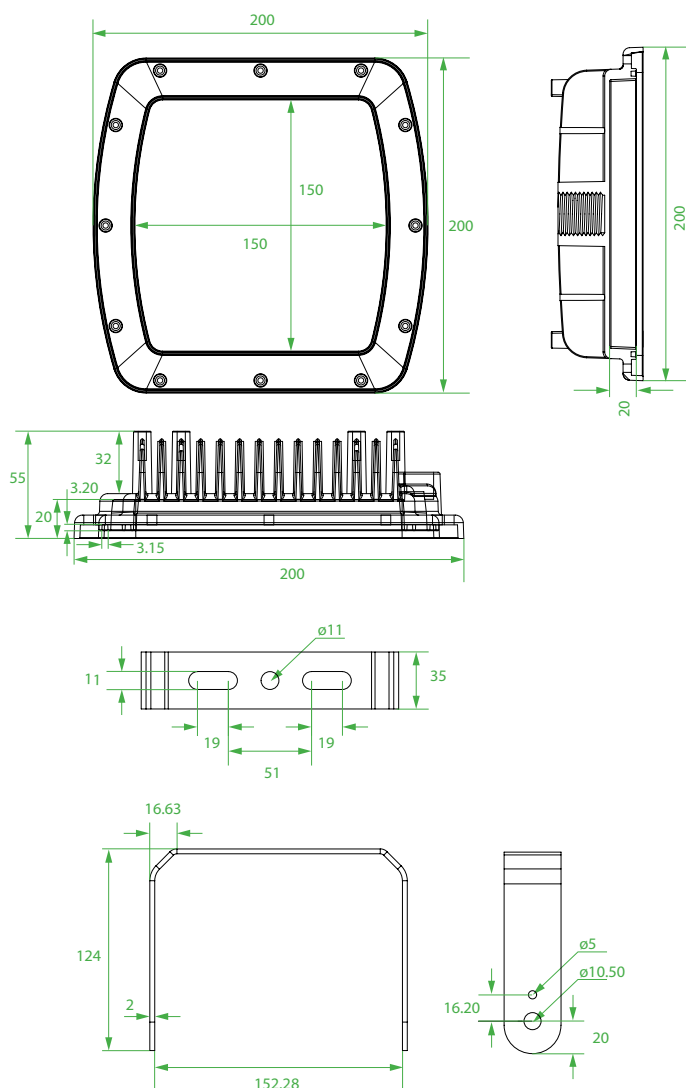
Ex. Atex Marine LED Floodlight 40Watt 5.200Lumens

Ex. Atex certified LED flood lights applicable for decks and technical in- and outdoor applications.

Ex ATEX and UL844 certified



Dimensions



Technical Information

Material:	Powder coated anodized seawater resistant aluminium
Finish:	White
Hardware:	Marine grade A4 316 stainless steel
Lens:	100°
IK Rating:	IK10
IP Rating:	IP68
Light Source:	40Watt 130Lumens per Watt Natural White 3900K CRI > 85
Power Source:	100-305Vac 50~60Hz Meanwell HLG-40H-42A Overload, over-voltage, over-temperature and short circuit protection. Potted driver
Ambient Temperature:	Operating Temperature -40°C ~ +55°
Cable Entry:	1 x M25 Cable Gland A4 316 stainless steel Ex. Atex certified
Mounting:	Supplied with knuckle bracket (additional U-shaped bracket)
Fixture weight:	9.25 lbs (4,2kg)

Compliances

ATEX certification UL844 & UL1598A (Marine)

In compliance with rules of maritime classification societies, additional VDE and IEC 60092-306.

(Equipment luminaires and lighting accessories for use on vessels)

FLEX Series

Ex. Atex Marine LED Floodlight 40Watt 5.200Lumens

Ordering information

Article No.:	Beam Angle	Light Colour	Voltage	Finish	Specialties
FLEX-040-39GR-HV	Wide beam 100°	3900K Natural White	100-305Vac 50 ~60Hz	Grey	Supplied with two sets installation brackets (knuckle- and U-shaped bracket)

Special Projects

We may be able to accommodate your special projects, so please don't hesitate to ask about additional options. Minimum order quantities and/or extended lead times will apply. Contact your E-LED Lighting representative with specific inquiries.

FLEX Series

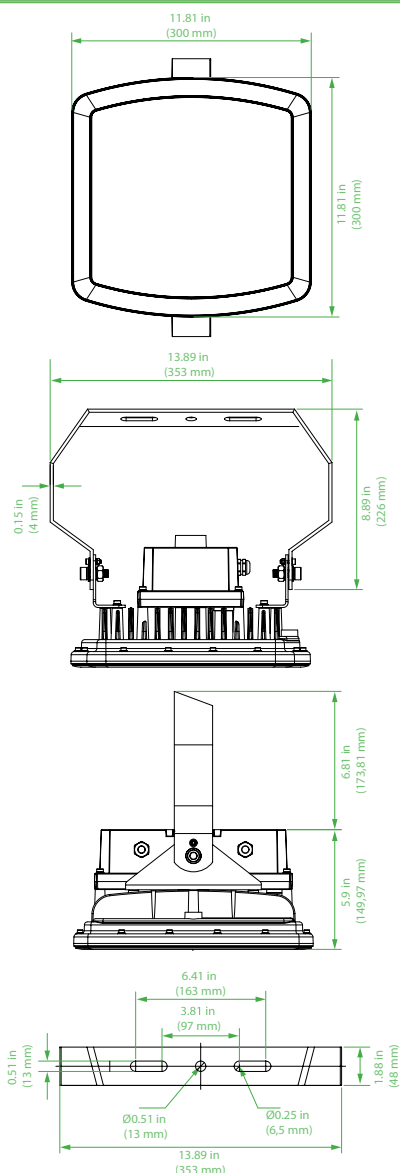
Ex. Atex Marine LED Floodlight 80Watt 10.400Lumens

Ex. Atex certified LED flood lights applicable for decks and technical in- and outdoor applications.

Ex ATEX and UL844 certified



Dimensions



Technical Information

Material:	Powder coated anodized seawater resistant aluminium
Finish:	White
Hardware:	Marine grade A4 316 stainless steel
Lens:	100°
IK Rating:	IK10
IP Rating:	IP66
Light Source:	80Watt 130Lumens per Watt Natural White 3900K CRI > 85
Power Source:	100-305Vac 50~60Hz Meanwell HLG-80H-42 Overload, over-voltage, over-temperature and short circuit protection. Potted driver
Ambient Temperature:	Operating Temperature -40°C ~ +55°
Cable Entry:	1 x M25 Cable Gland A4 316 stainless steel Ex. Atex certified
Mounting:	Adjustable A4 316 Stainless Steel bracket 0.19 in (5 mm) thickness
Fixture weight:	20.94 lbs (9,5 kg)

Compliances

ATEX certification UL844 & UL1598A (Marine)

In compliance with rules of maritime classification societies, additional VDE and IEC 60092-306.

(Equipment luminaires and lighting accessories for use on vessels)

FLEX Series

Ex. Atex Marine LED Floodlight 80Watt 10.400Lumens

Ordering information

Article No.:	Beam Angle	Light Colour	Voltage	Finish	Specialties
FLEX-080-39WH-HV	Wide beam 100°	3900K Natural White	100-305Vac 50 ~60Hz	White	

Special Projects

We may be able to accommodate your special projects, so please don't hesitate to ask about additional options. Minimum order quantities and/or extended lead times will apply. Contact your E-LED Lighting representative with specific inquiries.

FLEX Series

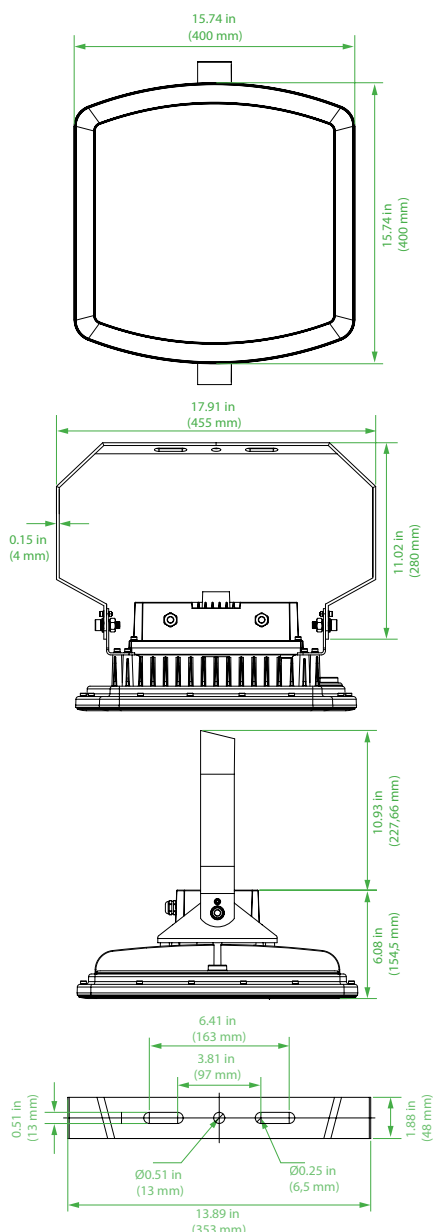
Ex. Atex Marine LED Floodlight 120Watt 15.600Lumens

Ex. Atex certified LED flood lights applicable for decks and technical in- and outdoor applications.

Ex ATEX and UL844 certified



Dimensions



Technical Information

Material:	Powder coated anodized seawater resistant aluminium
Finish:	White
Hardware:	Marine grade A4 316 stainless steel
Lens:	100°
IK Rating:	IK10
IP Rating:	IP67
Light Source:	120Watt 130Lumens per Watt Natural White 3900K CRI > 85
Power Source:	100-305Vac 50~60Hz Meanwell HLG-80H-42 Overload, over-voltage, over-temperature and short circuit protection. Potted driver
Ambient Temperature:	Operating Temperature -40°C ~ +55°
Cable Entry:	1 x M25 Cable Gland A4 316 stainless steel Ex. Atex certified
Mounting:	Adjustable A4 316 Stainless Steel bracket 0.19 in (5 mm) thickness
Fixture weight:	28.88 lbs (13,1 kg)

Compliances

ATEX certification

UL844

UL1598A

In compliance with rules of maritime classification societies, additional VDE and IEC 60092-306.

(Equipment luminaires and lighting accessories for use on vessels)

FLEX Series

Ex. Atex Marine LED Floodlight 120Watt 15.600Lumens

Ordering information

Article No.:	Beam Angle	Light Colour	Voltage	Finish	Specialties
FLEX-120-39WH-HV	Wide beam 100°	3900K Natural White	100-305Vac 50 ~60Hz	White	

Special Projects

We may be able to accommodate your special projects, so please don't hesitate to ask about additional options. Minimum order quantities and/or extended lead times will apply. Contact your E-LED Lighting representative with specific inquiries.

EXTPL Series

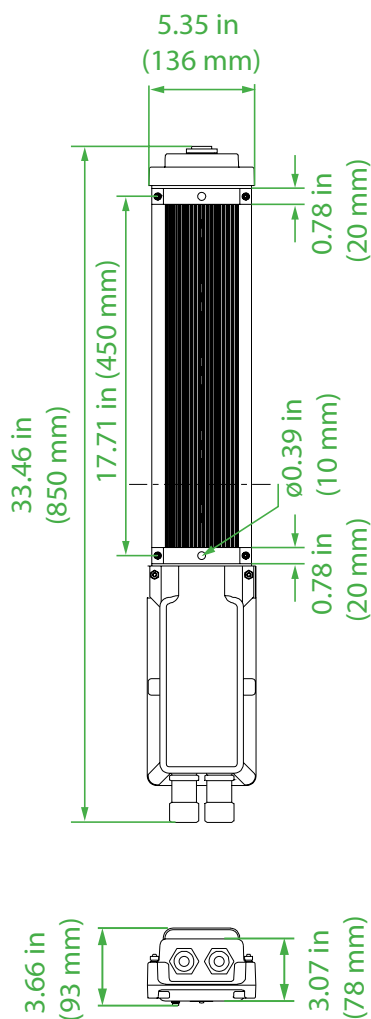
Ex. Atex LED Robust Tri-Proof Light 30Watt 3.000Lumens

Ex. Atex certified LED Tri-Proof lights for replacing TL fluorescent fixtures for various interior- and exterior applications such as stores, technical areas, decks etc. Standard supplied with 5Watt 24Vdc wired emergency circuit.

Ex ATEX certification



Dimensions



Technical Information

Material:	Powder coated anodized seawater resistant aluminium
Finish:	Black
Hardware:	Marine grade A4 316 stainless steel
Lens:	180°
IP Rating:	IP66
Light Source:	30Watt 100Lumens per Watt Natural White 3900K CRI > 85
Power Source:	100-305Vac 50~60Hz Sosen Electronics SS-35H-42 Overload, over-voltage, over-temperature and short circuit protection. Potted driver
Ambient Temperature:	Operating Temperature -40°C ~ +55°
Cable Entry:	2 x M25 Cable Gland A4 316 stainless steel Ex. Atex certified
Mounting:	A4 316 Stainless Steel bracket
Fixture weight:	10.36 lbs (4,7 kg)

Compliances

ATEX certification

In compliance with rules of maritime classification societies, additional VDE and IEC 60092-306.

(Equipment luminaires and lighting accessories for use on vessels)

EXTPL Series

Ex. Atex LED Robust Tri-Proof Light 30Watt 3.000Lumens

Ordering information

Article No.:	Beam Angle	Light Colour	Voltage	Finish	Specialties
EXTPL-30W-39-77-HVE	Wide beam 180°	3900K Natural White	100-305Vac 50~60Hz	Black	Standard supplied with 20-30Vdc 5Watt emergency circuit

Special Projects

We may be able to accommodate your special projects, so please don't hesitate to ask about additional options. Minimum order quantities and/or extended lead times will apply. Contact your E-LED Lighting representative with specific inquiries.

EXTPL Series

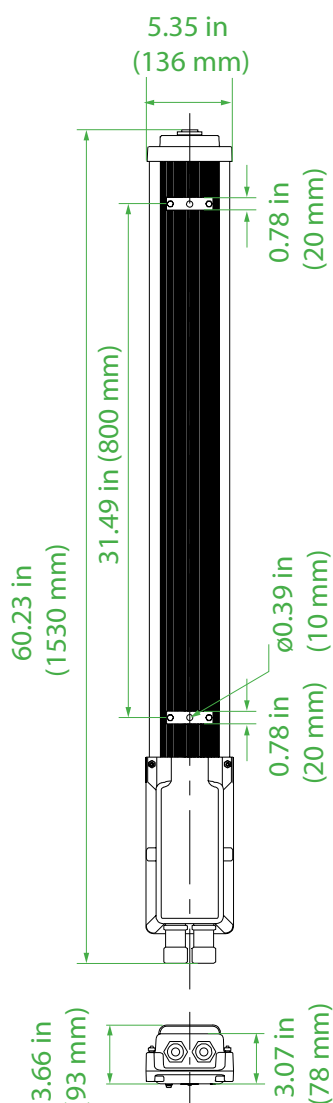
Ex. Atex LED Robust Tri-Proof Light 60Watt 6.000Lumens

Ex. Atex certified LED Tri-Proof lights for replacing TL fluorescent fixtures for various interior- and exterior applications such as stores, technical areas, decks etc. Standard supplied with 5Watt 24Vdc wired emergency circuit.

Ex ATEX certification



Dimensions



Technical Information

Material:	Powder coated anodized seawater resistant aluminium
Finish:	Black
Hardware:	Marine grade A4 316 stainless steel
Lens:	180°
IP Rating:	IP66
Light Source:	60Watt 100Lumens per Watt Natural White 3900K CRI > 85
Power Source:	100-305Vac 50~60Hz Sosen Electronics SS-60H-42 Overload, over-voltage, over-temperature and short circuit protection. Potted driver
Ambient Temperature:	Operating Temperature -40°C ~ +55°
Cable Entry:	2 x M25 Cable Gland A4 316 stainless steel Ex. Atex certified
Mounting:	A4 316 Stainless Steel bracket
Fixture weight:	14.55 lbs (6,6kg)

Compliances

ATEX certification

In compliance with rules of maritime classification societies, additional VDE and IEC 60092-306.

(Equipment luminaires and lighting accessories for use on vessels)

EXTPL Series

Ex. Atex LED Robust Tri-Proof Light 60Watt 6.000Lumens

Ordering information

Article No.:	Beam Angle	Light Colour	Voltage	Finish	Specialties
EXTPL-60W-39-137-HVE	Wide beam 180°	3900K Natural White	100-305Vac 50~60Hz	Black	Standard supplied with 20-30Vdc 5Watt emergency circuit

Special Projects

We may be able to accommodate your special projects, so please don't hesitate to ask about additional options. Minimum order quantities and/or extended lead times will apply. Contact your E-LED Lighting representative with specific inquiries.

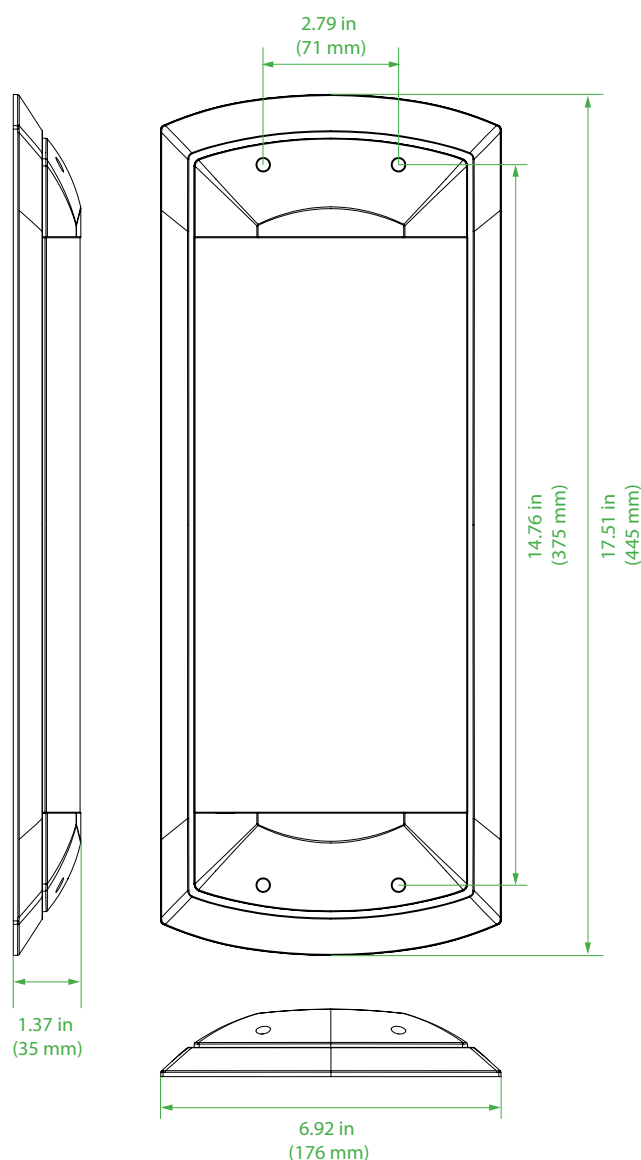
MPFL Series

Multi-Purpose LED Utility Light 18Watt 2.250Lumens

Multi-purpose LED utility lights available for various interior technical applications such as cabins, corridors, stairs, stores, galley/pantry, mess room, workshops, bridge, engine room etc.



Dimensions



Technical Information

Material:	Polyamide (PA), aluminium and polycarbonate cover
Lens:	160°
IP Rating:	IP55
Light Source:	18Watt 140Lumens per Watt 3900K Natural White (additional RED available) 3000K Warm White and 5500K Cool White available on request CRI > 85
Power Source:	85-265Vac 50~60Hz (10-30Vdc optional)
Ambient Temperature:	Operating temperature -20°C ~ +50°
Cable:	3mtr 3 x 1mm halogen free cable
Mounting:	Surface- or recessed mount - 4 x M2 screw entries
Fixture weight:	2.86 lbs (1,3 kg)

Compliances

In compliance with rules of maritime classification societies, additional VDE and IEC 60092-306.
(Equipment luminaires and lighting accessories for use on vessels)

MPFL Series

Multi-Purpose LED Utility Light 18Watt 2.250Lumens

Ordering information

Article No.:	Beam Angle	Light Colour	Voltage	Finish	Specialties
MPFL-18W-30-WH-HV	Wide beam 120°	3000K Warm White	85-265Vac 50~60Hz	White	
MPFL-18W-39+E-WH-H/L	Wide beam 120°	3900K Natural White	85-265Vac 50~60Hz + 10-30Vdc	White	Dual voltage
MPFL-18W-39+R-WH-HV	Wide beam 160°	3900K Natural White + Red	85-265Vac 50~60Hz	White	White main circuit + Red back-up circuit
MPFL-18W-39+R-WH-LV	Wide beam 160°	3900K Natural White + Red	10-30Vdc	White	White main circuit + Red back-up circuit
MPFL-18W-39-WH-HV	Wide beam 160°	3900K Natural White	85-265Vac 50~60Hz	White	
MPFL-18W-39-WH-LV	Wide beam 160°	3900K Natural White	10-30Vdc	White	
MPFL-18W-55-WH-LV	Wide beam 160°	5500K Cool White	10-30Vdc	White	

Special Projects

We may be able to accommodate your special projects, so please don't hesitate to ask about additional options. Minimum order quantities and/or extended lead times will apply. Contact your E-LED Lighting representative with specific inquiries.

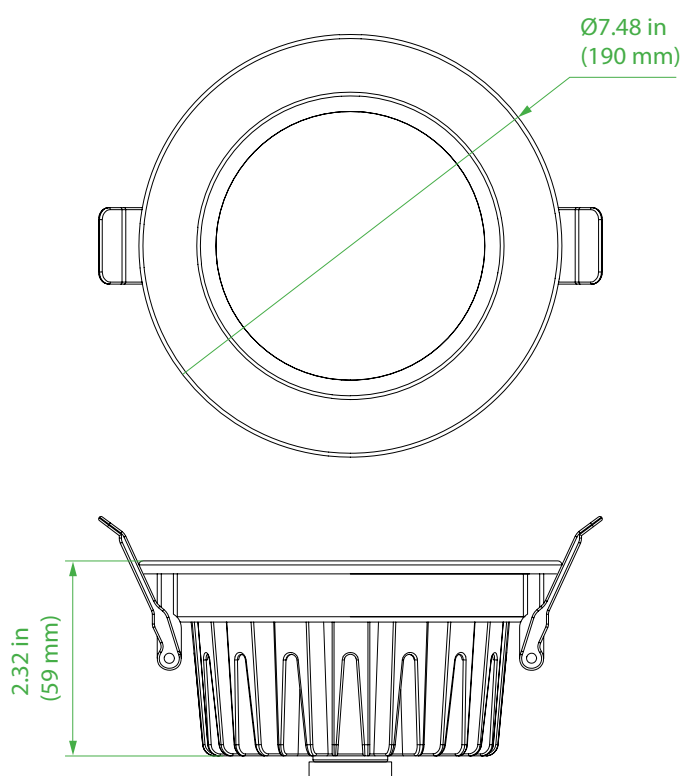
RLDL Series

LED Downlight 21Watt 2.100Lumens

LED downlight with reflector available for various interior- and technical applications such as accommodation, passengers area, bridge, corridor etc. Standard supplied with dimmable driver.



Dimensions



Technical Information

Material:	Anodized aluminium housing and trim ring
Finish:	White Trim Ring (optional colours on request *1)
Lens:	140°
IP Rating:	IP44
Light Source:	21Watt 100Lumens per Watt Natural White 3900K (optional red- or blue lens on request *2) CRI > 85
Power Source:	100-305Vac 50~60Hz LiFud LF-GDE023YF0450U Dimmable driver (0-10Vdc – PWM – resistance) Overload, over-voltage, over-temperature and short circuit protection.
Ambient Temperature:	Operating temperature -30°C ~ +50°
Mounting:	Heavy spring clips for ceilings max. 1.37 in (35 mm) (fixed driver bracket optional *3)
Fixture weight:	1.98 lbs (0,9 kg)

Compliances

In compliance with rules of maritime classification societies, additional VDE and IEC 60092-306.
(Equipment luminaires and lighting accessories for use on vessels)

RLDL Series

LED Downlight 21Watt 2.100Lumens

Ordering information

Article No.:	Beam Angle	Light Colour	Voltage	Finish	Specialties
RLDL-21-39WH-HV	Wide beam 140°	3900K Natural White	100-305Vac 50~60Hz	White	Standard supplied with dimmable driver

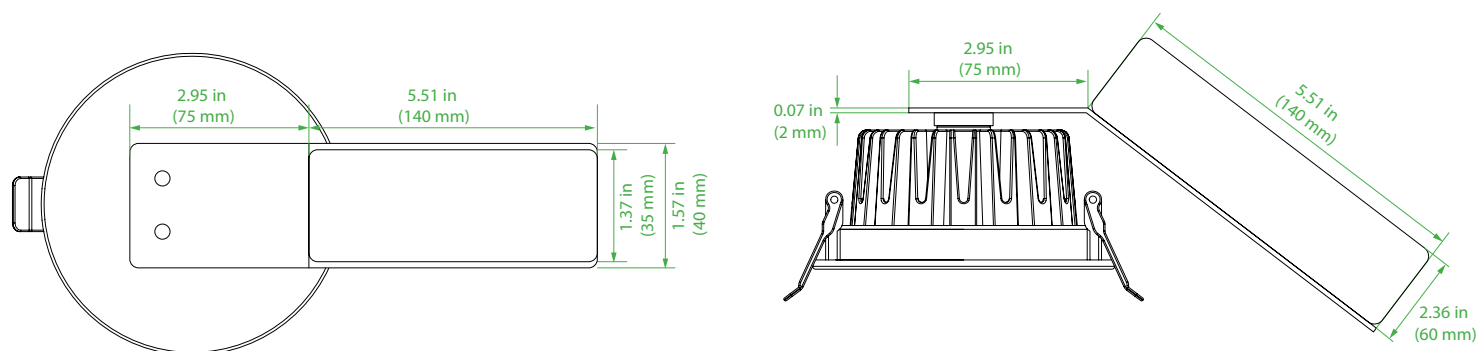
*1 Optional RAL colour available for cover ring:

Minimal order quantities and extended lead times will apply for custom colours.

*2 Optional red- or blue lenses available:

Red- or blue lenses available from stock.

*3 Optional fixed driver bracket:



Special Projects

We may be able to accommodate your special projects, so please don't hesitate to ask about additional options. Minimum order quantities and/or extended lead times will apply. Contact your E-LED Lighting representative with specific inquiries.

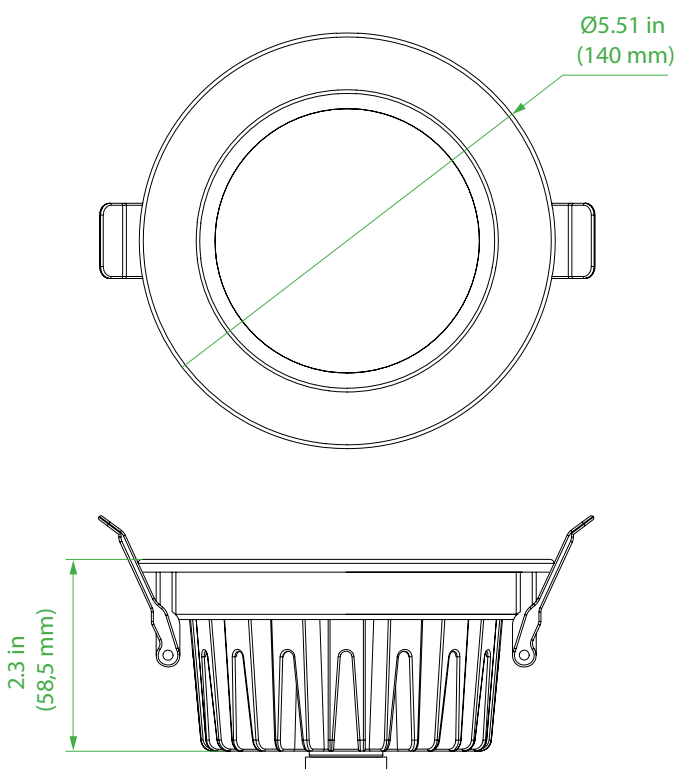
RLDL Series

LED Downlight 15Watt 1.500Lumens

LED downlight with reflector available for various interior- and technical applications such as accommodation, passengers area, bridge, corridor etc. Standard supplied with dimmable driver.



Dimensions



Technical Information

Material:	Anodized aluminium housing and trim ring
Finish:	White Trim Ring (optional colours on request *1)
Lens:	140°
IP Rating:	IP44
Light Source:	15Watt 100Lumens per Watt Natural White 3900K (optional red- or blue lens on request *2) CRI > 85
Power Source:	100-305Vac 50~60Hz (10-30Vdc optional) LiFud LF-GDE023YF0350U Dimmable driver (0-10Vdc – PWM – resistance) Overload, over-voltage, over-temperature and short circuit protection.
Ambient Temperature:	Operating temperature -30°C ~ +50°
Mounting:	Heavy spring clips for ceilings max. 1.37 in (35 mm) (fixed driver bracket optional *3)
Fixture weight:	1.54 lbs (0,7 kg)

Compliances

In compliance with rules of maritime classification societies, additional VDE and IEC 60092-306.
(Equipment luminaires and lighting accessories for use on vessels)

RLDL Series

LED Downlight 15Watt 1.500Lumens

Ordering information

Article No.:	Beam Angle	Light Colour	Voltage	Finish	Specialties
RLDL-15-39WH-HV	Wide beam 140°	3900K Natural White	100-305Vac 50~60Hz	White	Dimmable driver
RLDL-15-39WH-HVB	Wide beam 140°	Blue	100-305Vac 50~60Hz	White	Dimmable driver and blue lens
RLDL-15-39WH-HVR	Wide beam 140°	Red	100-305Vac 50~60Hz	White	Dimmable driver and red lens
RLDL-15-39WH-LV	Wide beam 140°	3900K Natural White	10-30Vdc	White	PWM dimming
RLDL-15-39WH-LVB	Wide beam 140°	Blue	10-30Vdc	White	PWM dimming and blue lens
RLDL-15-39WH-LVR	Wide beam 160°	Red	10-30Vdc	White	PWM dimming and red lens

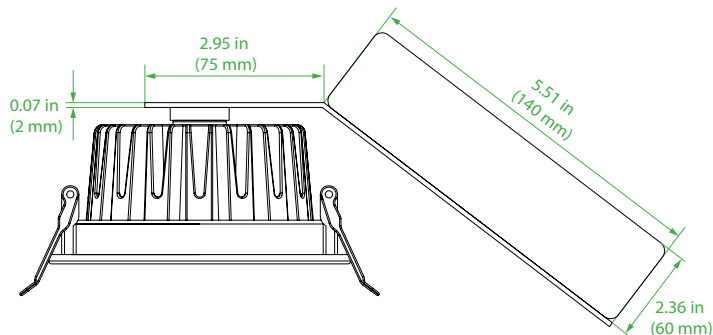
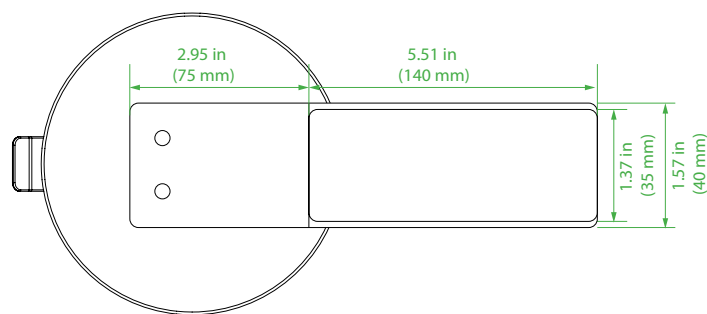
*1 Optional RAL colour available for cover ring:

Minimal order quantities and extended lead times will apply for custom colours.

*2 Optional red- or blue lenses available:

Red- or blue lenses available from stock.

*3 Optional fixed driver bracket:



Special Projects

We may be able to accommodate your special projects, so please don't hesitate to ask about additional options. Minimum order quantities and/or extended lead times will apply. Contact your E-LED Lighting representative with specific inquiries.

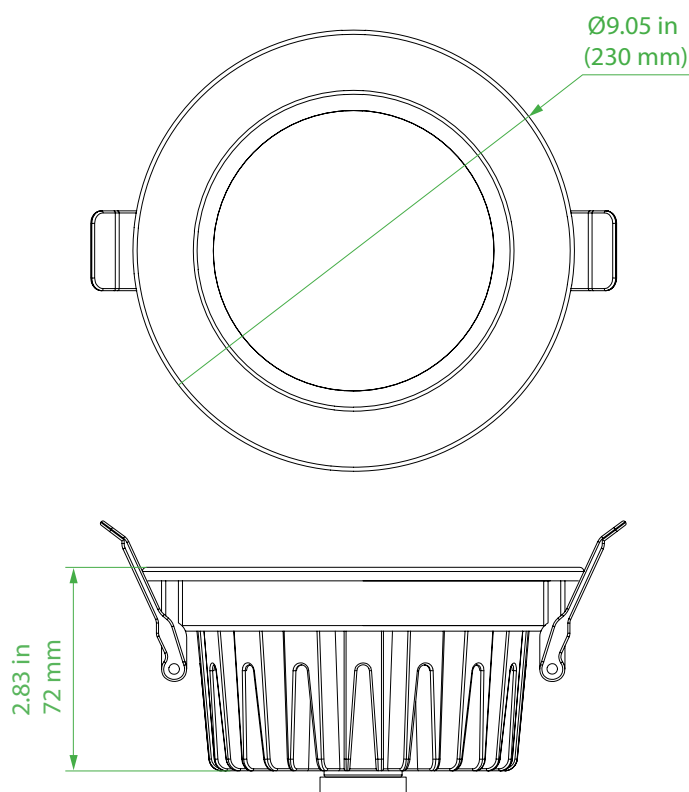
RLDL Series

LED Downlight 30Watt 3.000Lumens

LED downlight with reflector available for various interior- and technical applications such as accommodation, passengers area, bridge, corridor etc. Standard supplied with dimmable driver.



Dimensions



Technical Information

Material:	Anodized aluminium housing and trim ring
Finish:	White Trim Ring (optional colours on request *1)
Lens:	140°
IP Rating:	IP44
Light Source:	30Watt 100Lumens per Watt Natural White 3900K (optional red- or blue lens on request *2) CRI > 85
Power Source:	100-305Vac 50~60Hz LiFud LF-GDE023YF0550U Dimmable driver (0-10Vdc – PWM – resistance) Overload, over-voltage, over-temperature and short circuit protection.
Ambient Temperature:	Operating temperature -30°C ~ +50°
Mounting:	Heavy spring clips for ceilings max. 1.37 in (35 mm)
Fixture weight:	2.42 lbs (1,1 kg)

Compliances

In compliance with rules of maritime classification societies, additional VDE and IEC 60092-306.
(Equipment luminaires and lighting accessories for use on vessels)

RLDL Series

LED Downlight 30Watt 3.000Lumens

Ordering information

Article No.:	Beam Angle	Light Colour	Voltage	Finish	Specialties
RLDL-30-39WH-HV	Wide beam 140°	3900K Natural White	100-305Vac 50~60Hz	White	Standard supplied with dimmable driver

*1 Optional RAL colour available for cover ring:

Minimal order quantities and extended lead times will apply for custom colours.

*2 Optional red- or blue lenses available:

Red- or blue lenses available from stock.

Special Projects

We may be able to accommodate your special projects, so please don't hesitate to ask about additional options. Minimum order quantities and/or extended lead times will apply. Contact your E-LED Lighting representative with specific inquiries.

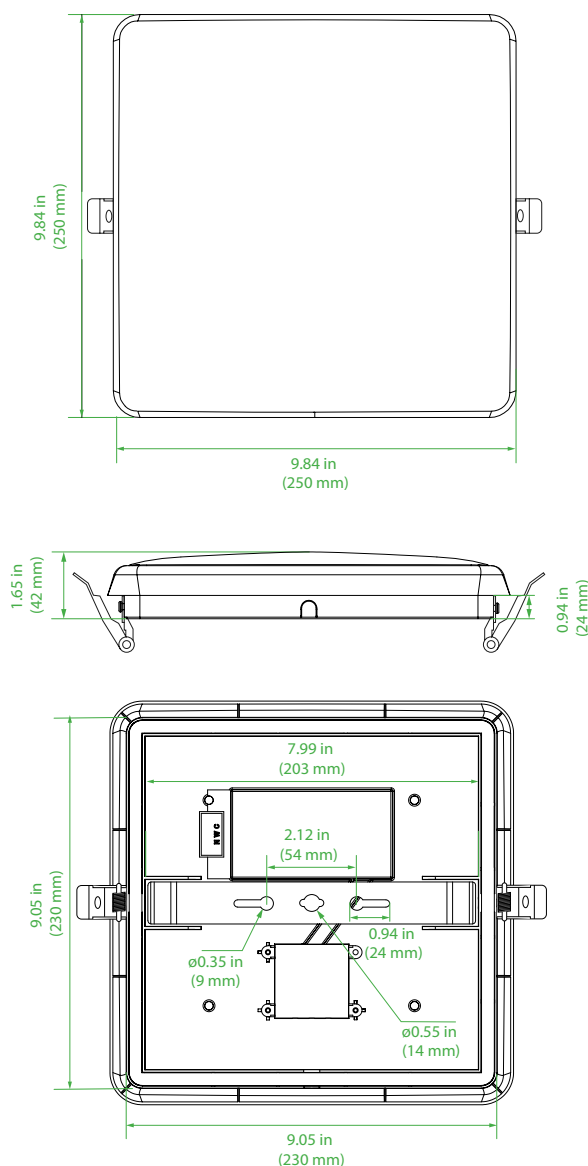


USLC Series

Ultra Slim LED Ceiling Light 12Watt 1.200Lumens

Ceiling fixtures for suitable for various interior applications such as accommodation, passengers area, corridor workshop, stairways etc. Can be installed surface- or recessed. Available with emergency circuit.

Dimensions



Technical Information

Material:	Polyamide (PA) and polycarbonate cover
Finish:	White (Silver trim ring optional)
Lens:	160°
IK Rating:	IK10
IP Rating:	IP55
Light Source:	12Watt 100Lumens per Watt 3000K Warm White CRI > 85
Power Source:	85-265Vac 50~60Hz (20-30Vdc emergency circuit optional)
Ambient Temperature:	Operating temperature -20°C ~ +50°
Cable:	
Mounting:	Surface – Fixed aluminium bracket Recessed – Heavy spring clips for ceilings max. 35mm
Fixture weight:	1.54 lbs (0,7kg)

Compliances

In compliance with rules of maritime classification societies, additional VDE and IEC 60092-306.
(Equipment luminaires and lighting accessories for use on vessels)

USLC Series

Ultra Slim LED Ceiling Light 12Watt 1.200Lumens

Ordering information

Article No.:	Beam Angle	Light Colour	Voltage	Finish	Specialties
USLC-12-30-WH-HV	Wide beam 160°	3000K Warm White	85-265Vac 50~60Hz	White	Standard supplied with fixed aluminium bracket and heavy spring clips
USLC-12-30-WH-HV+E	Wide beam 160°	3000K Warm White	85-265Vac 50~60Hz + 20-30Vdc	White	Standard supplied with fixed aluminium bracket and heavy spring clips
USLC-12-30-SL-HV	Wide beam 160°	3000K Warm White	85-265Vac 50~60Hz	Silver	Standard supplied with fixed aluminium bracket and heavy spring clips
USLC-12-30-SL-HV+E	Wide beam 160°	3000K Warm White	85-265Vac 50~60Hz + 20-30Vdc	Silver	Standard supplied with fixed aluminium bracket and heavy spring clips

Special Projects

We may be able to accommodate your special projects, so please don't hesitate to ask about additional options. Minimum order quantities and/or extended lead times will apply. Contact your E-LED Lighting representative with specific inquiries.

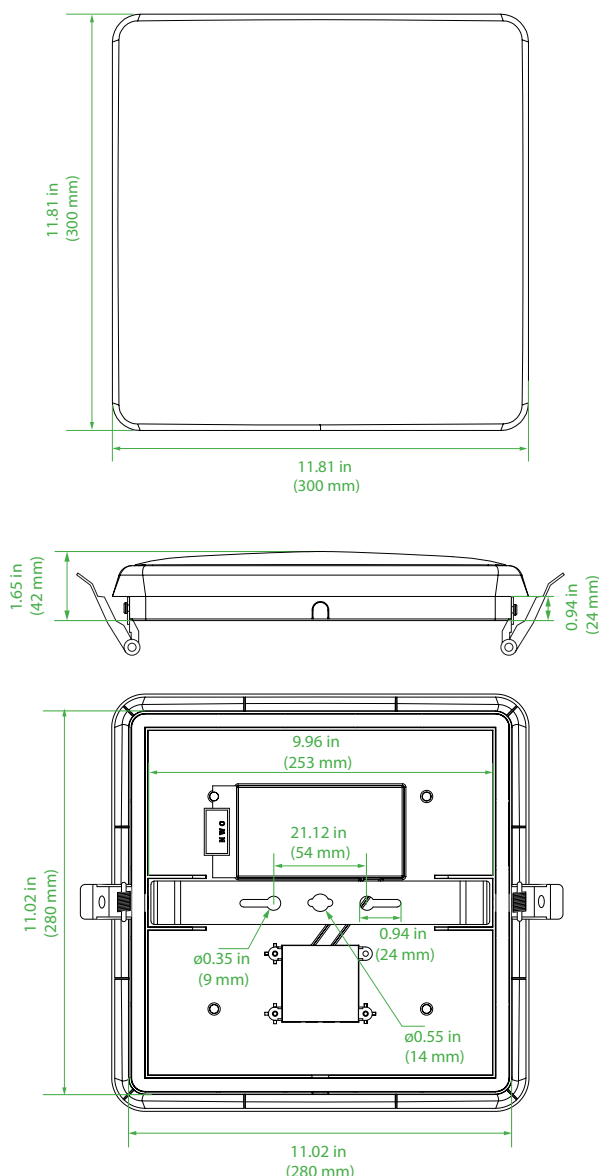


USLC Series

Ultra Slim LED Ceiling Light 18Watt 1.800Lumens

Ceiling fixtures for suitable for various interior applications such as accommodation, passengers area, corridor workshop, stairways etc. Can be installed surface- or recessed. Available with emergency circuit.

Dimensions



Technical Information

Material:	Polyamide (PA) and polycarbonate cover
Finish:	White (Silver trim ring optional)
Lens:	160°
IK Rating:	IK10
IP Rating:	IP55
Light Source:	18Watt 100Lumens per Watt 3000K Warm White CRI > 85
Power Source:	85-265Vac 50~60Hz (20-30Vdc emergency circuit optional)
Ambient Temperature:	Operating temperature -20°C ~ +50°
Cable:	
Mounting:	Surface – Fixed aluminium bracket Recessed – Heavy spring clips for ceilings max. 35mm
Fixture weight:	1.98 lbs (0,9kg)

Compliances

In compliance with rules of maritime classification societies, additional VDE and IEC 60092-306.
(Equipment luminaires and lighting accessories for use on vessels)

USLC Series

Ultra Slim LED Ceiling Light 18Watt 1.800Lumens

Ordering information

Article No.:	Beam Angle	Light Colour	Voltage	Finish	Specialties
USLC-18-30-WH-HV	Wide beam 160°	3000K Warm White	85-265Vac 50~60Hz	White	Standard supplied with fixed aluminium bracket and heavy spring clips
USLC-18-30-WH-HV+E	Wide beam 160°	3000K Warm White	85-265Vac 50~60Hz + 20-30Vdc	White	Standard supplied with fixed aluminium bracket and heavy spring clips
USLC-18-30-SL-HV	Wide beam 160°	3000K Warm White	85-265Vac 50~60Hz	Silver	Standard supplied with fixed aluminium bracket and heavy spring clips
USLC-18-30-SL-HV+E	Wide beam 160°	3000K Warm White	85-265Vac 50~60Hz + 20-30Vdc	Silver	Standard supplied with fixed aluminium bracket and heavy spring clips

Special Projects

We may be able to accommodate your special projects, so please don't hesitate to ask about additional options. Minimum order quantities and/or extended lead times will apply. Contact your E-LED Lighting representative with specific inquiries.

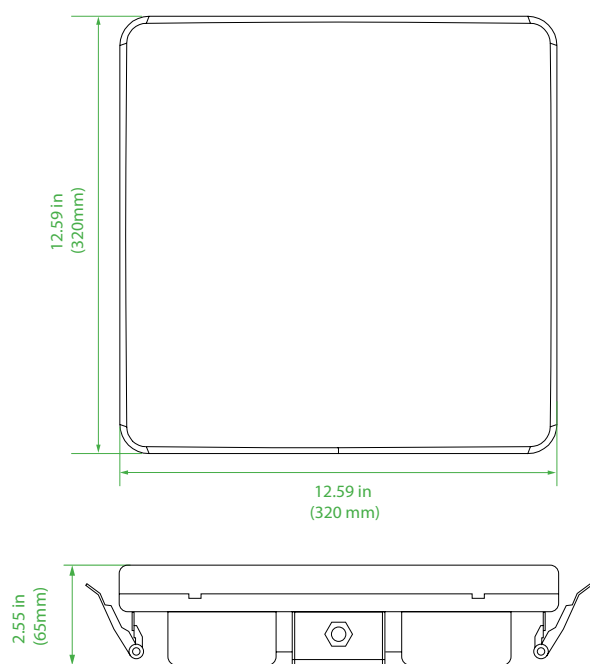
USLC Series

Ultra Slim LED Ceiling Light 20Watt 2.000Lumens

*Ceiling fixtures suitable for various interior applications such as accommodation, passengers area, corridor workshop, stairways etc.
Can be installed surface- or recessed. Standard supplied with dimmable driver and 3hours battery powered emergency circuit.*



Dimensions



Technical Information

Material:	Polyamide (PA) and polycarbonate cover
Finish:	White
Lens:	180°
IP Rating:	IP66
Light Source:	20Watt
	100Lumens per Watt
	3000K Warm White
	CRI > 85
Power Source:	85-265Vac 50~60Hz
Ambient Temperature:	Operating temperature -20°C ~ +45°
Cable:	
Mounting:	Surface – Fixed aluminium bracket
	Recessed – Heavy spring clips for ceilings max. 35mm
Fixture weight:	3.74 lbs (1,7kg)

Compliances

In compliance with rules of maritime classification societies, additional VDE and IEC 60092-306.
(Equipment luminaires and lighting accessories for use on vessels)

USLC Series

Ultra Slim LED Ceiling Light 20Watt 2.000Lumens

Ordering information

Article No.:	Beam Angle	Light Colour	Voltage	Finish	Specialties
USLC-20-30-WH-HVE	Wide beam 180°	3000K Warm White	85-265Vac 50~60Hz	White	Standard supplied with dimmable driver and 3hours battery powered emergency circuit

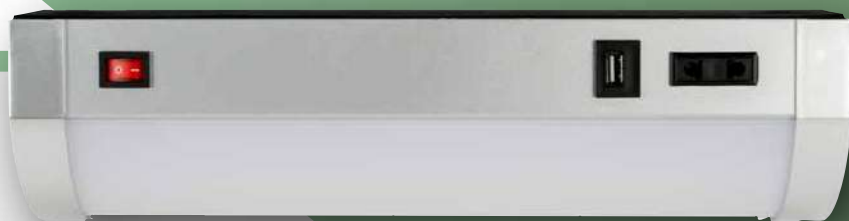
Special Projects

We may be able to accommodate your special projects, so please don't hesitate to ask about additional options. Minimum order quantities and/or extended lead times will apply. Contact your E-LED Lighting representative with specific inquiries.

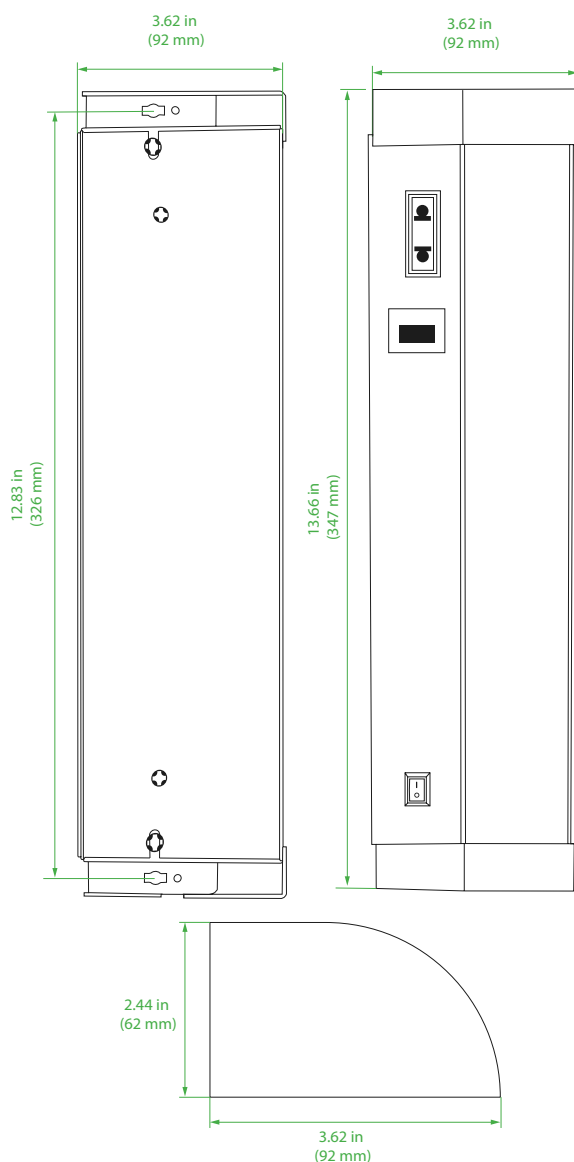
BLL Series

Bunk LED Light 10Watt 1.000Lumens

Bunk light for interior use in cabin, with standard on/off switch, USB port supplied and outlet. Available with on/off switch and USB port only.



Dimensions



Technical Information

Material:	Polyamide (PA) and polycarbonate cover
Lens:	90°
IP Rating:	IP20
Light Source:	10Watt
	100Lumens per Watt
	Warm White 3000K
	CRI > 85
Power Source:	85-265Vac 50~60Hz
USB:	1 x 5V/2A
Ambient Temperature:	Operating temperature -20°C ~ +45°
Installation:	Internal 3-pole power terminal
Mounting:	Surface mount
Fixture weight:	1.54 lbs (0,7kg)

Compliances

In compliance with rules of maritime classification societies, additional VDE and IEC 60092-306.
(Equipment luminaires and lighting accessories for use on vessels)

BLL Series

Bunk LED Light 10Watt 1.000Lumens

Ordering information

Article No.:	Beam Angle	Light Colour	Voltage	Finish	Specialties
BLL-10-30SL-HV	Wide beam 90°	3000K Warm White	85-265Vac 50~60Hz	Silver grey	Supplied with on- off switch
BLL-10-30SL-HV+0	Wide beam 90°	3000K Warm White	85-265Vac 50~60Hz	Silver grey	Supplied with on- off switch and power outlet

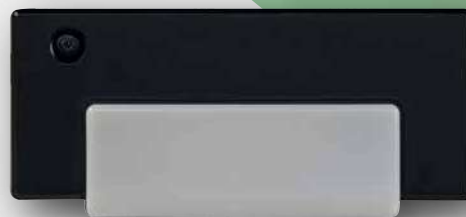
Special Projects

We may be able to accommodate your special projects, so please don't hesitate to ask about additional options. Minimum order quantities and/or extended lead times will apply. Contact your E-LED Lighting representative with specific inquiries.

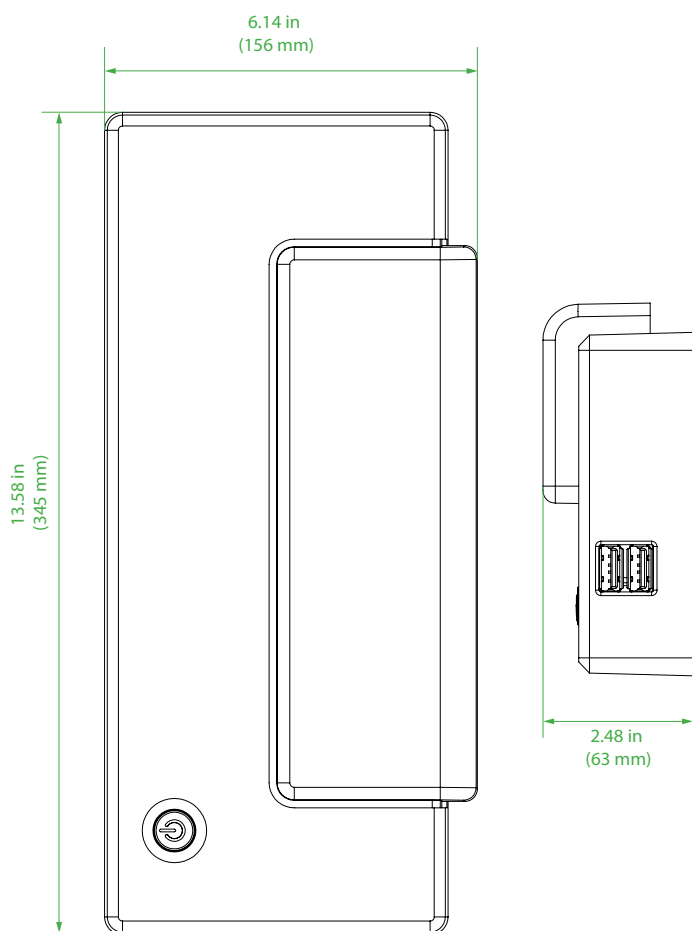
CBLL Series

Cabin Bunk LED Light 8Watt 800Lumens

Cabin bunk light is a bed- bunk light for interior use. Standard supplied with dimmable driver and double USB ports. Available in anthracite grey and white.



Dimensions



Technical Information

Material:	Polyamide (PA) and polycarbonate cover
Lens:	90°
IP Rating:	IP20
Light Source:	8Watt 100Lumens per Watt Warm White 3000K CRI > 85
Power Source:	85-265Vac 50~60Hz Ply Power LAG20-18U Short circuit protection Potted driver
USB:	2 x 5V/1A
Ambient Temperature:	Operating temperature -20°C ~ +45°
Installation:	Internal 3-pole power terminal
Mounting:	Surface mount
Fixture weight:	1.76 lbs (2,48 kg)

Compliances

In compliance with rules of maritime classification societies, additional VDE and IEC 60092-306.
(Equipment luminaires and lighting accessories for use on vessels)

CBLL Series

Cabin Bunk LED Light 8Watt 800Lumens

Ordering information

Article No.:	Beam Angle	Light Colour	Voltage	Finish	Specialties
CBLL-08-30AT-HV	Wide beam 90°	3900K Natural White	100-305Vac 50~60Hz	Anthracite Grey	Standard supplied with dimmable driver and double USB ports
CBLL-08-30WH-HV	Wide beam 90°	3900K Natural White	100-305Vac 50~60Hz	White	Standard supplied with dimmable driver and double USB ports

Special Projects

We may be able to accommodate your special projects, so please don't hesitate to ask about additional options. Minimum order quantities and/or extended lead times will apply. Contact your E-LED Lighting representative with specific inquiries.

MPCL Series

Multi-Purpose Cabinet Lights 10Watt 1.300Lumens

Ordering information

Article No.:	Beam Angle	Light Colour	Voltage	Finish	Specialties
MPCL-10-30WH-HV	Wide beam 140°	3000K Warm White	85-265Vac 50~60Hz	White	
MPCL-10-30WH-HV+S	Wide beam 140°	3000K Warm White	85-265Vac 50~60Hz	White	Supplied with on- off switch
MPCL-10-30WH-HV+S+O	Wide beam 140°	3000K Warm White	85-265Vac 50~60Hz	White	Supplied with on- off switch and outlet

Special Projects

We may be able to accommodate your special projects, so please don't hesitate to ask about additional options. Minimum order quantities and/or extended lead times will apply. Contact your E-LED Lighting representative with specific inquiries.

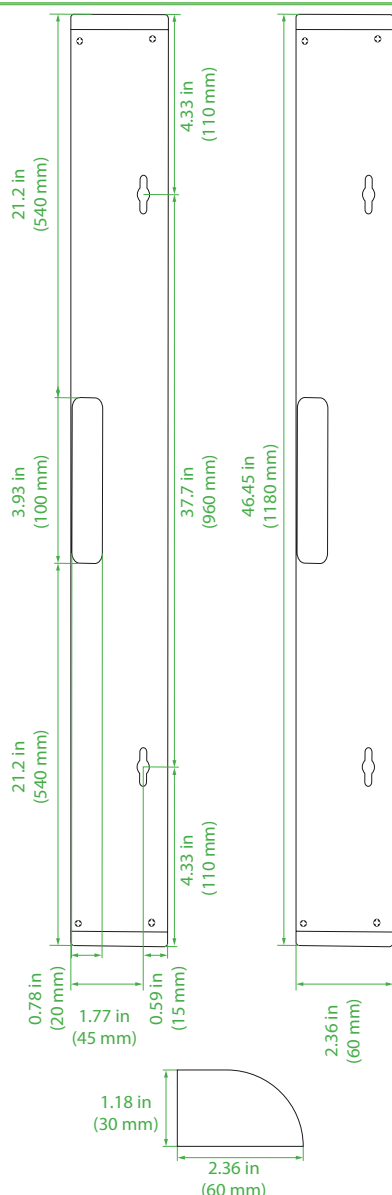


MPCL Series

Multi-Purpose Cabinet Lights 20Watt 2.600Lumens

Multi-purpose LED cabinet lights can be installed for various interior applications such as corners, mirrors, cabins, corridors, bathrooms, stairways etc. Available with on/off switch and razor sockets in different variations.

Dimensions



Technical Information

Material:	Powder coated aluminium and polycarbonate cover
Lens:	140°
IP Rating:	IP44
Light Source:	20Watt 130Lumens per Watt 3000K Warm White CRI > 85
Power Source:	85-265Vac 50~60Hz
Ambient Temperature:	Operating temperature -20°C ~ +45°
Cable:	
Mounting:	Surface mount
Fixture weight:	1.32 lbs (0,6 kg)

Compliances

ETL certified
SAA certified
In compliance with rules of maritime classification societies, additional VDE and IEC 60092-306.
(Equipment luminaires and lighting accessories for use on vessels)

MPCL Series

Multi-Purpose Cabinet Lights 20Watt 2.600Lumens

Ordering information

Article No.:	Beam Angle	Light Colour	Voltage	Finish	Specialties
MPCL-20-30WH-HV+S	Wide beam 140°	3000K Warm White	85-265Vac 50~60Hz	White	Supplied with on- off switch
MPCL-20-30WH-HV+S+O	Wide beam 140°	3000K Warm White	85-265Vac 50~60Hz	White	Supplied with on- off switch and outlet

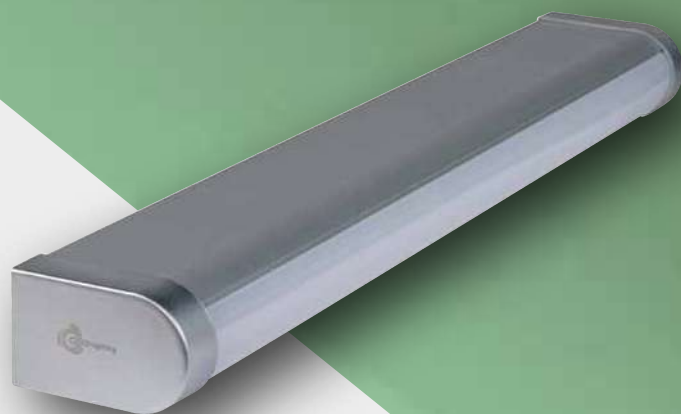
Special Projects

We may be able to accommodate your special projects, so please don't hesitate to ask about additional options. Minimum order quantities and/or extended lead times will apply. Contact your E-LED Lighting representative with specific inquiries.

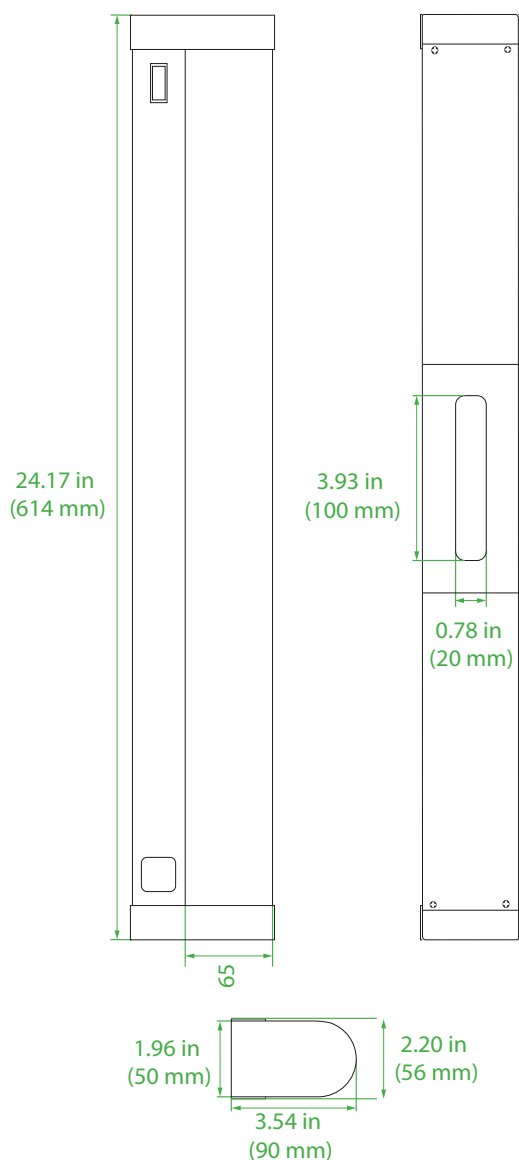
MLML Series

LED Mirror Light 10Watt 1.000Lumens

*LED mirror light fixture for installation in bathroom areas.
Standard supplied with covered outlet and on-off switch.*



Dimensions



Technical Information

Material:	Polyamide (PA) and polycarbonate cover
Lens:	90°
IP Rating:	IP44
Light Source:	10Watt
	100Lumens per Watt
	Warm White 3000K
	CRI > 85
Power Source:	85-265Vac 50~60Hz
Ambient Temperature:	Operating temperature -20°C ~ +45°
Installation:	Internal 3-pole power terminal
Mounting:	Surface mount
Fixture weight:	1.76 lbs (0,8 kg)

Compliances

In compliance with rules of maritime classification societies,
additional VDE and IEC 60092-306.
(Equipment luminaires and lighting accessories for use on vessels)

MLML Series

LED Mirror Light 10Watt 1.000Lumens

Ordering information

Article No.:	Beam Angle	Light Colour	Voltage	Finish	Specialties
MLML-10-30SL-HV+0	Wide beam 90°	3000K Warm White	85-265Vac 50~60Hz	Silver grey	Supplied with on-off switch and covered outlet

Special Projects

We may be able to accommodate your special projects, so please don't hesitate to ask about additional options. Minimum order quantities and/or extended lead times will apply. Contact your E-LED Lighting representative with specific inquiries.

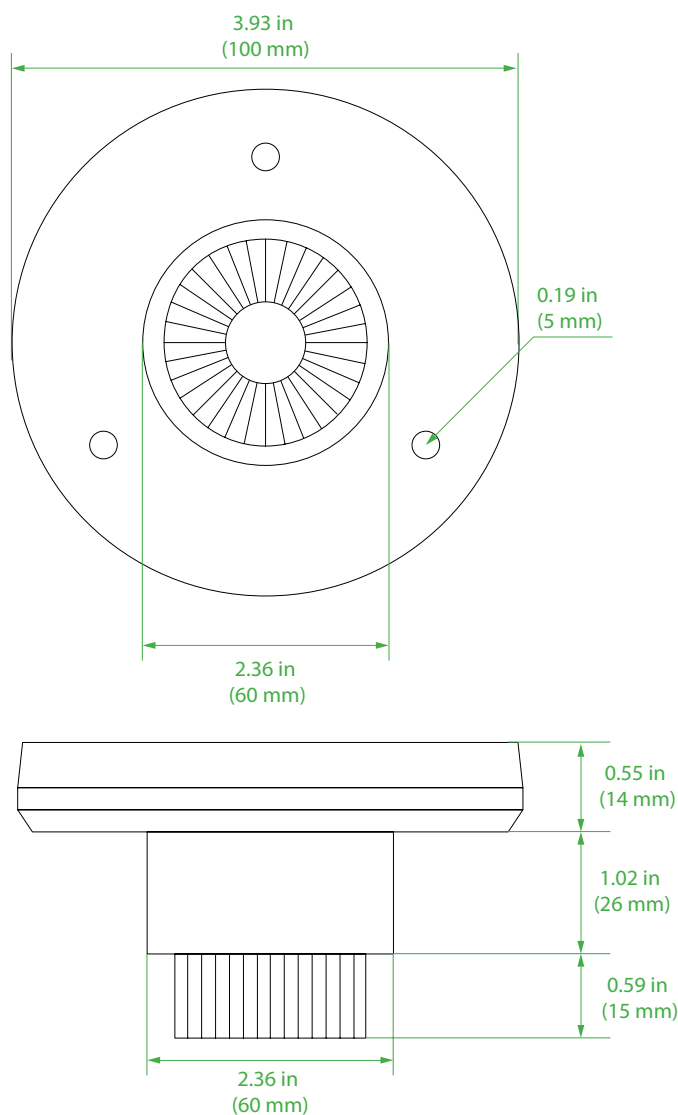
ANT Series

LED Downlight 9 Watt 900 Lumens

LED downlight supplied with robust design suitable for exterior applications. Available in 5Watt 10-30Vdc version



Dimensions



Technical Information

Material:	Glass nylon and A4 316 stainless steel trim ring
Finish:	Polished stainless
Lens:	50°
IP Rating:	IP67
Light Source:	9Watt 100Lumens per Watt Natural White 3900K CRI > 85
Power Source:	100-265Vac 50~60Hz (5Watt 10-30Vdc optional*1) Meanwell APC-8-700 Potted driver
Ambient Temperature:	Operating temperature -30°C ~ +55°
Mounting:	Screw mount
Fixture weight:	1.1 lbs (1,10 kg)

Compliances

In compliance with rules of maritime classification societies, additional VDE and IEC 60092-306.
(Equipment luminaires and lighting accessories for use on vessels)

ANT Series

LED Downlight 9 Watt 900 Lumens

Ordering information

Article No.:	Beam Angle	Light Colour	Voltage	Finish	Specialties
ANT-9-39PS-HV	Medium beam 50°	3900K Natural White	100-265Vac 50~60Hz	Polished Stainless	
ANT-9-27PS-LV (standard)	Medium beam 50°	2700K Warm White	10-30Vdc	Polished Stainless	
ANT-9-39PS-LV (standard)	Medium beam 50°	3900K Natural White	10-30Vdc	Polished Stainless	

*1 Optional 5Watt 10-30Vdc version available:

5Watt 10-30Vdc version available in 2700K Warm White and 3900K Natural White

Special Projects

We may be able to accommodate your special projects, so please don't hesitate to ask about additional options. Minimum order quantities and/or extended lead times will apply. Contact your E-LED Lighting representative with specific inquiries.

CHFL Series

LED Chart Light 3Watt 300Lumens

LED chart light supplied with white- and red circuit, both dimmable, and 50cm flexible arm for lighting out specific spots.



Dimensions

Technical Information

Material:	Coated aluminium
Lens:	120°
IP Rating:	IP44
Light Source:	3Watt
	100Lumens per Watt
	Natural White 3900K
	CRI > 75
Power Source:	10-30Vdc (85-265Vac 50~60Hz optional)
Ambient Temperature:	Operating temperature +45°
Mounting:	Surface mount
Fixture weight:	0.44 lbs (0,2 kg)

Compliances

In compliance with rules of maritime classification societies, additional VDE and IEC 60092-306.
(Equipment luminaires and lighting accessories for use on vessels)

CHFL Series

LED Chart Light 3Watt 300Lumens

Ordering information

Article No.:	Beam Angle	Light Colour	Voltage	Finish	Specialties
CHFL-3-39/R-BL-HV	Wide beam 120°	3900K Natural White + RED	85-265Vac 50~60Hz	Black	Supplied with on- off switch and dimmable driver
CHFL-3-39/R-BL-LV	Wide beam 120°	3900K Natural White + RED	10-30Vdc	Black	Supplied with on- off switch and dimmable driver

Special Projects

We may be able to accommodate your special projects, so please don't hesitate to ask about additional options. Minimum order quantities and/or extended lead times will apply. Contact your E-LED Lighting representative with specific inquiries.

CHFL Series

LED Chart Light 2Watt 150Lumens

LED chart light supplied with white- and red circuit, both dimmable, and 38cm flexible arm for lighting out specific spots.



Dimensions

Technical Information

Material:	Coated aluminium
Lens:	120°
IP Rating:	IP44
Light Source:	2Watt
	75Lumens per Watt
	Warm White 3000K
	CRI > 75
Power Source:	10-30Vdc
Ambient Temperature:	Operating temperature +45°
Mounting:	Surface mount
Fixture weight:	0.33 lbs (0,15 kg)

Compliances

In compliance with rules of maritime classification societies, additional VDE and IEC 60092-306.
(Equipment luminaires and lighting accessories for use on vessels)

CHFL Series

LED Chart Light 2Watt 150Lumens

Ordering information

Article No.:	Beam Angle	Light Colour	Voltage	Finish	Specialties
CHFL-2-30/R-CH-LV	Wide beam 120°	3000K Warm White + RED	10-30Vdc	Chrome	Changing colour- and dimming with touch

Special Projects

We may be able to accommodate your special projects, so please don't hesitate to ask about additional options. Minimum order quantities and/or extended lead times will apply. Contact your E-LED Lighting representative with specific inquiries.

WRTD Series

LED Reading Light 2Watt 150Lumens 3cm rotatable

*LED reading light with blue indicator rings for easy recognition by night, standard supplied with touch dimmer.
Blue indicator rings can be turned on- and off.*



Dimensions

Technical Information

Material:	Chrome plated aluminium
Lens:	120°
IP Rating:	IP44
Light Source:	2Watt
	75Lumens per Watt
	Warm White 3000K
	CRI > 75
Power Source:	10-30Vdc
	85-265Vac 50~60Hz (dimmable option available)
Ambient Temperature:	Operating temperature +45°
Mounting:	Surface mount
Fixture weight:	0.33 lbs (0,15 kg)

Compliances

In compliance with rules of maritime classification societies, additional VDE and IEC 60092-306.
(Equipment luminaires and lighting accessories for use on vessels)

WRTD Series

LED Reading Light 2Watt 150Lumens 3cm rotatable

Ordering information

Article No.:	Beam Angle	Light Colour	Voltage	Finish	Specialties
CHFL-2-30/B-CH03-LV	Wide beam 120°	3000K Warm White	10-30Vdc	Chrome	Standard supplied with touch dimming and blue indicator rings

Special Projects

We may be able to accommodate your special projects, so please don't hesitate to ask about additional options. Minimum order quantities and/or extended lead times will apply. Contact your E-LED Lighting representative with specific inquiries.

WRTD Series

LED Reading Light 2Watt 150Lumens 10cm rotatable

*LED reading light with blue indicator rings for easy recognition by night, standard supplied with touch dimmer.
Blue indicator rings can be turned on- and off.*



Dimensions

Technical Information

Material:	Chrome plated aluminium
Lens:	120°
IP Rating:	IP44
Light Source:	2Watt
	75Lumens per Watt
	Warm White 3000K
	CRI > 75
Power Source:	10-30Vdc
Ambient Temperature:	Operating temperature +45°
Mounting:	Surface mount
Fixture weight:	0.33 lbs (0,15 kg)

Compliances

In compliance with rules of maritime classification societies, additional VDE and IEC 60092-306.
(Equipment luminaires and lighting accessories for use on vessels)

WRTD Series

LED Reading Light 2Watt 150Lumens 10cm rotatable

Ordering information

Article No.:	Beam Angle	Light Colour	Voltage	Finish	Specialties
CHFL-2-30/B-CH10-LV	Wide beam 120°	3000K Warm White	10-30Vdc	Chrome	Standard supplied with touch dimming and blue indicator rings

Special Projects

We may be able to accommodate your special projects, so please don't hesitate to ask about additional options. Minimum order quantities and/or extended lead times will apply. Contact your E-LED Lighting representative with specific inquiries.

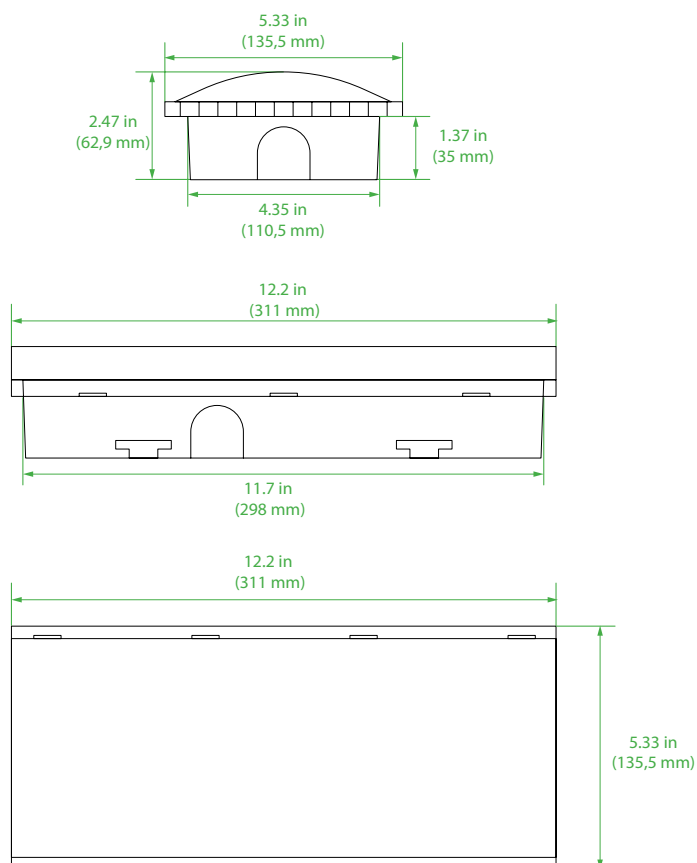


LESL Series

LED Exit Sign Light 4Watt 260Lumens

LED exit sing lights available with various pictograms available for use as lead, and emergency/exit lights. Standard supplied with 3hours battery powered emergency circuit and self-test option. Ceiling- or wall mount available.

Dimensions



Technical Information

Material:	Flame resistant ABS and poly carbonate cover
Viewing distance:	24m
IP Rating:	IP65
Light Source:	4Watt
	65Lumens per Watt
	Cool White 6000K
	CRI > 80
Power Source:	220-240Vac 50~60Hz (120Vac optional)
	3hours battery powered emergency circuit
Charge time:	24 hours
Ambient Temperature:	Operating temperature +45°
Cable Entry:	4 x M20 gland with internal 3-pole terminal block
Installation:	Screw (heavy spring clips for ceiling max. 1.37 in (35 mm))
Mounting:	Surface mount (recessed mount optional)
Fixture weight:	1.87 lbs (0,85 kg)

Compliances

ENEC certified

CB certified

SAA certified

In compliance with rules of maritime classification societies, additional VDE and IEC 60092-306.

(Equipment luminaires and lighting accessories for use on vessels)

LESL Series

LED Exit Sign Light 4Watt 260Lumens

Ordering information

Article No.:	Viewing Distance	Light Colour	Voltage	Finish	Specialties
LESL-4W-3HR-120-CM	24mtr	6000K Cool White	100-120Vac 50~60Hz	White	Ceiling Mount
LESL-4W-3HR-120-WM	24mtr	6000K Cool White	100-120Vac 50~60Hz	White	Wall Mount
LESL-4W-3HR-220-CM	24mtr	6000K Cool White	220-240Vac 50~60Hz	White	Ceiling Mount
LESL-4W-3HR-220-WM	24mtr	6000K Cool White	220-240Vac 50~60Hz	White	Wall Mount

Special Projects

We may be able to accommodate your special projects, so please don't hesitate to ask about additional options. Minimum order quantities and/or extended lead times will apply. Contact your E-LED Lighting representative with specific inquiries.

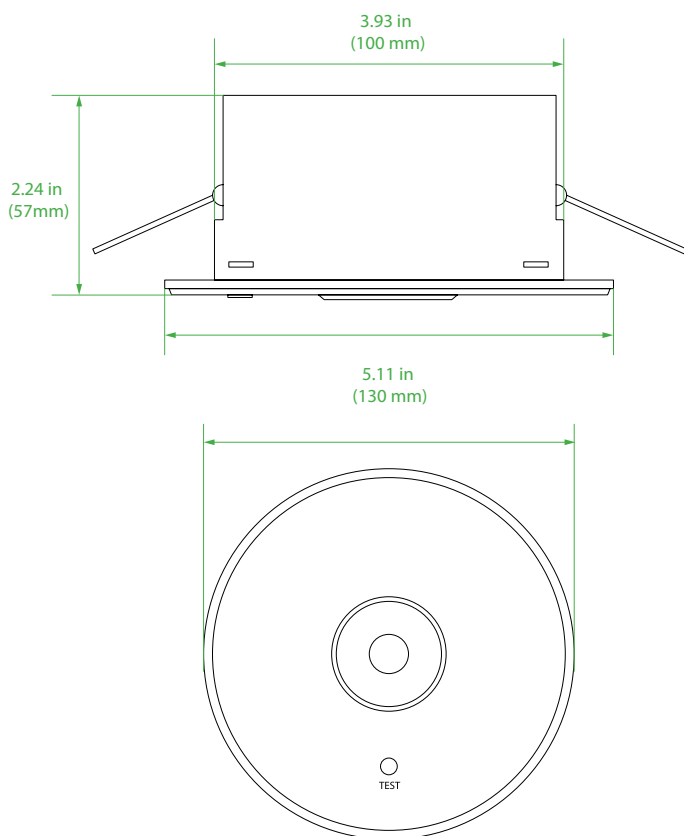
ERL Series

LED Escape Route Lighting 12Watt 800Lumens

Round, recessed mount LED escape route light. Standard supplied with 3hours battery powered emergency circuit and self-test option.



Dimensions



Technical Information

Material:	Flame resistant ABS and poly carbonate cover
IP Rating:	IP20
Light Source:	12Watt
	65Lumens per Watt
	Cool White 6000K
	CRI > 80
Power Source:	220-240Vac 50~60Hz (100-120Vac optional)
	3hours battery powered emergency circuit
Charge time:	24 hours
Ambient Temperature:	Operating temperature +45°
Cable Entry:	1 x M20 gland with internal 3-pole terminal block
Installation:	Heavy spring clips for ceilings max. 1.37 in (35 mm)
Mounting:	Recessed mount
Fixture weight:	0.66 lbs (0,3 kg)

Compliances

ENEC certified

CB certified

SAA certified

In compliance with rules of maritime classification societies, additional VDE and IEC 60092-306.

(Equipment luminaires and lighting accessories for use on vessels)

ERL Series

LED Escape Route Lighting 12Watt 800Lumens

Ordering information

Article No.:	Beam Angle	Light Colour	Voltage	Finish	Specialties
ERL-1W-3HR-220-RM	Wide narrow beam 140°	6000K Cool White	200-240Vac 50~60Hz	White	3hours battery powered emergency circuit

Special Projects

We may be able to accommodate your special projects, so please don't hesitate to ask about additional options. Minimum order quantities and/or extended lead times will apply. Contact your E-LED Lighting representative with specific inquiries.

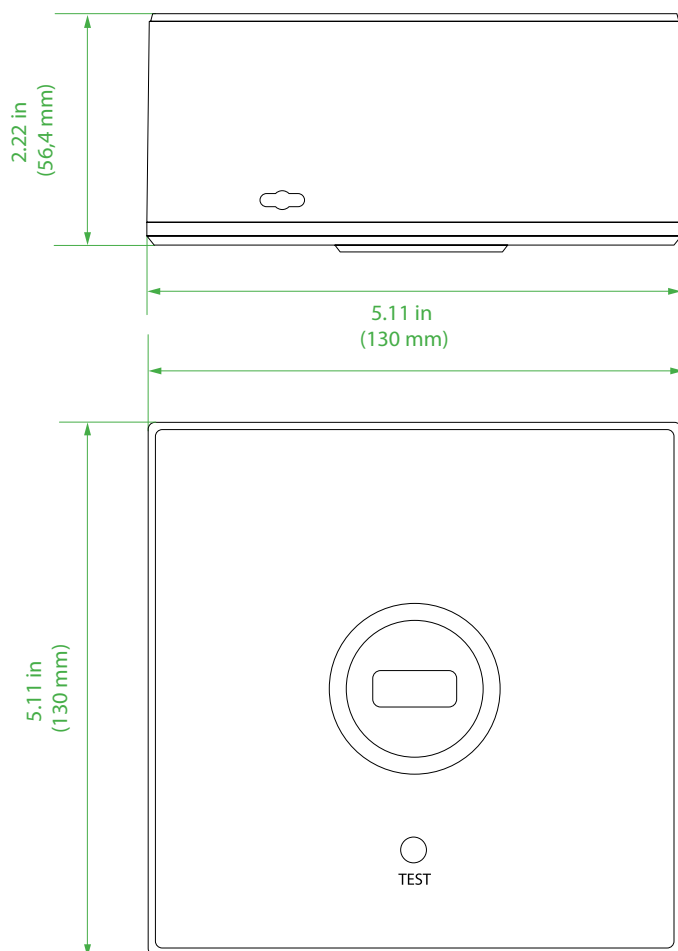
ERL Series

LED Escape Route Lighting 12Watt 800Lumens

Square, surface mount LED escape route light. Standard supplied with 3hours battery powered emergency circuit and self-test option.



Dimensions



Technical Information

Material:	Flame resistant ABS and poly carbonate cover
IP Rating:	IP20
Light Source:	12Watt
	65Lumens per Watt
	Cool White 6000K
	CRI > 80
Power Source:	220-240Vac 50~60Hz (100-120Vac optional)
	3hours battery powered emergency circuit
Charge time:	24 hours
Ambient Temperature:	Operating temperature +45°
Cable Entry:	1 x M20 gland with internal 3-pole terminal block
Installation:	Screw mount
Mounting:	Surface mount
Fixture weight:	0.66 lbs (0,3 kg)

Compliances

ENEC certified

CB certified

SAA certified

In compliance with rules of maritime classification societies, additional VDE and IEC 60092-306.

(Equipment luminaires and lighting accessories for use on vessels)

ERL Series

LED Escape Route Lighting 12Watt 800Lumens

Ordering information

Article No.:	Beam Angle	Light Colour	Voltage	Finish	Specialties
ERL-1W-3HR-220-SM	Wide narrow beam 140°	6000K Cool White	200-240Vac 50~60Hz	White	3hours battery powered emergency circuit

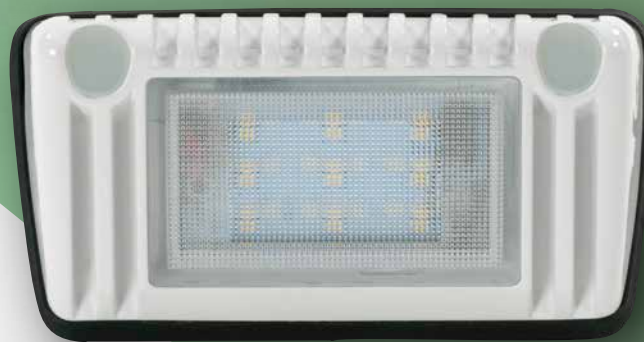
Special Projects

We may be able to accommodate your special projects, so please don't hesitate to ask about additional options. Minimum order quantities and/or extended lead times will apply. Contact your E-LED Lighting representative with specific inquiries.

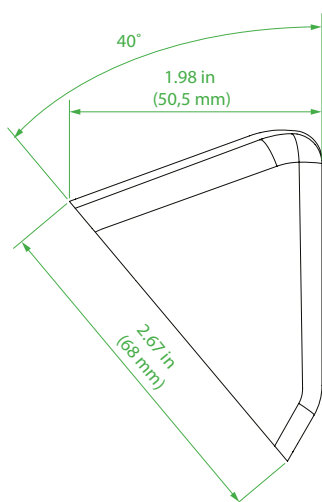
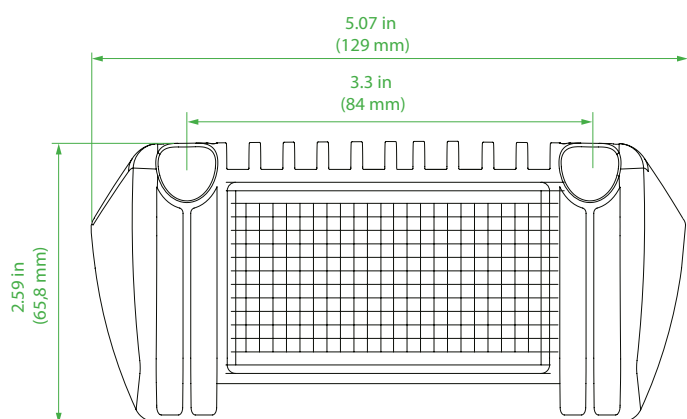
MPWL Series

Multi-Purpose Wall Light 7Watt 700Lumens

Multi-Purpose light for decks and technical in- and outdoor applications such as escape lighting, gangway lighting entrance lighting etc. Standard supplied with rubber isolating pad.



Dimensions



Technical Information

Material:	Powder coated anodized seawater resistant aluminium
Finish:	White
Lens:	120°
IP Rating:	IP67
Light Source:	10Watt 120Lumens per Watt Natural White 3900K CRI > 85
Power Source:	10-30Vdc
Ambient Temperature:	Operating temperature -20°C ~ +45°
Cable:	13.77 x (2) 0.02 in (350mm 2 x 0,75mm) (optional 30mm wiring with Bullet connectors*1)
Mounting:	Surface
Fixture weight:	0.88 lbs (0,4 kg)

Compliances

In compliance with rules of maritime classification societies, additional VDE and IEC 60092-306.
(Equipment luminaires and lighting accessories for use on vessels)

MPWL Series

Multi-Purpose Wall Light 7Watt 700Lumens

Ordering information

Article No.:	Beam Angle	Light Colour	Voltage	Finish	Specialties
MPWL-7W-39-WH-LV	Wide beam 120°	3900K Natural White	10-30Vdc	White	Supplied with isolating rubber pad

Special Projects

We may be able to accommodate your special projects, so please don't hesitate to ask about additional options. Minimum order quantities and/or extended lead times will apply. Contact your E-LED Lighting representative with specific inquiries.

LLL Series

LED Locker Light 7Watt 350Lumens

*Locker light for various interior- and exterior applications with minimal space for lighting installation but with need for lighting.
Standard supplied with dual colour white/red with both colours dimmable.*



Technical Information

Material:	Polyamide (PA) + polycarbonate cover
Finish:	White
Lens:	180°
IP Rating:	IP66
Light Source:	7Watt 50Lumens per Watt 3000K Warm White + RED circuit CRI > 80
Power Source:	10-30Vdc
Ambient Temperature:	Operating temperature -20°C ~ +45°
Cable:	
Mounting:	Surface – Fixed aluminium bracket
Fixture weight:	1.54 lbs (0,7 kg)

Compliances

In compliance with rules of maritime classification societies, additional VDE and IEC 60092-306.
(Equipment luminaires and lighting accessories for use on vessels)

LLL Series

LED Locker Light 7Watt 350Lumens

Ordering information

Article No.:	Beam Angle	Light Colour	Voltage	Finish	Specialties
LLL-7W-30WH-LV	Wide beam 180°	3000K Warm White + RED	10-30Vdc	White	White- and red lights dimmable by touch buttons

Special Projects

We may be able to accommodate your special projects, so please don't hesitate to ask about additional options. Minimum order quantities and/or extended lead times will apply. Contact your E-LED Lighting representative with specific inquiries.

WL Series

LED Wall Light 6Watt 600Lumens

Wall mount series applicable for interior areas such as cabins, offices, mess room, corridors etc. Available with a dimmable driver on request.



Dimensions

Technical Information

Material:	Powder coated anodized aluminium
Finish:	White
Lens:	120°
IP Rating:	IP44
Light Source:	6Watt
	100Lumens per Watt
	3900K Natural White
	CRI > 85
Power Source:	85-265Vac 50~60Hz (dimmable option available)
Ambient Temperature:	Operating temperature -20°C ~ +45°
Cable:	
Mounting:	Fixed aluminium bracket
Fixture weight:	0.88 lbs (0,4 kg)

Compliances

In compliance with rules of maritime classification societies, additional VDE and IEC 60092-306.
(Equipment luminaires and lighting accessories for use on vessels)

WL Series

LED Wall Light 6Watt 600Lumens

Ordering information

Article No.:	Beam Angle	Light Colour	Voltage	Finish	Specialties
WL-6W-140-30-WH-HV	Wide beam 120°	3000K Warm White	85-265Vac 50~60Hz	White	
WLD-6W-140-30-WH-HV	Wide beam 120°	3000K Warm White	220-240Vac 50~60Hz	White	Supplied with dimmable driver
WL-6W-200-30-WH-HV	Wide beam 120°	3000K Warm White	85-265Vac 50~60Hz	White	
WLD-6W-200-30-WH-HV	Wide beam 120°	3000K Warm White	220-240Vac 50~60Hz	White	Supplied with dimmable driver

Special Projects

We may be able to accommodate your special projects, so please don't hesitate to ask about additional options. Minimum order quantities and/or extended lead times will apply. Contact your E-LED Lighting representative with specific inquiries.