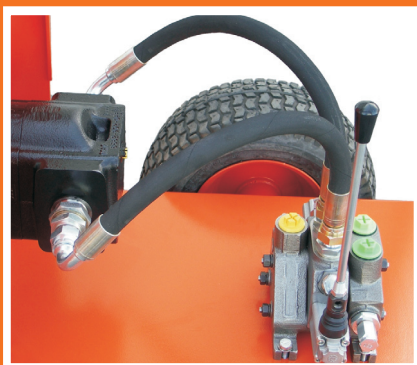


# DEN-JET CH20 SERIES

# HIGH PRESSURE WATER BLASTERS HYDRAULIC DRIVEN



Stainless steel pump-head.  
Integrated unloader valve.



Control valve to pressure line,  
return line & drain line to tank.



Stainless steel top-frame  
with gun rest / lance holder.



Galvanized frame with built in  
brake and pneumatic wheels.



One centralized and balanced  
lifting eye.



Model:	CH20-350	CH20-400	CH20-500
<b>Technical details:</b>			
W.P. Bar / Psi	350 / 5075	400 / 5800	500 / 7250
Flow Lpm / Gpm	23 / 6	20 / 5,2	16 / 4,2
<b>Hydraulic Drive Spec.</b>			
Motor Hp / Kw	20 / 15	20 / 15	20 / 15
Flow L/min / Gpm	65 / 17,5	65 / 17,5	65 / 17,5
Pressure Bar / Psi	230 / 3335	230 / 3335	230 / 3335
<b>Dimensions</b>			
L x W x H mm	1060 x 760 x 850	1060 x 760 x 850	1060 x 760 x 850 <sup>*)</sup>
Weight Kg	145	145	145

All models are CE marked

<sup>\*)</sup> Super Slim L x W x H: 1060 x 500 x 850 mm

## Standard accessories incl. with each machine:

- 20m wear resistant high pressure hose  
c/w ½"BSPP female swivel connections.
- 5m Hydraulic oil supply, drain & leak hose.
- Trigger operated dry-shut gun  
c/w 0,85m long stainless steel lance.
- Straight jet spraying nozzle.

## Optional accessories for each model:

- 20m wear resistant high pressure hose  
c/w ½"BSPP female swivel connections (Extension hose).
- Rotating nozzle.
- Sand blasting kit c/w boron carbide nozzle.
- Mobile abrasive container.
- Spare part kit.

w w w . d e n j e t . c o m

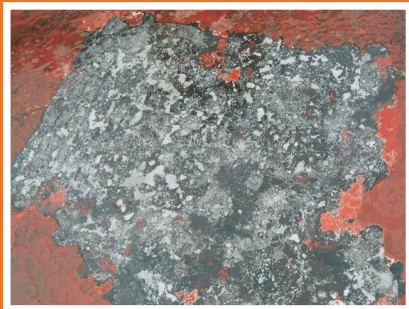
# DEN-JET



CE20-500 Super Slim



Rotating Nozzle



Surface- Rotating Nozzle



Sand Blasting Equipment



Surface- Sand blasting

## HIGH PRESSURE WATER BLASTERS & ACCESSORIES

### UHP accessories (< 40.000PSI)

- Ultra high pressure guns.
- Rotating Nozzles.
- Floor/Deck cleaners.
- Hoses & Fittings.
- Nozzles & Nozzle carriers.
- Filters & Filtration systems.



### WB accessories (< 20.000PSI)

- Dump & Dry Shot guns.
- Foot valves.
- Unloader & Safety valves.
- Hoses & Fittings.
- Nozzles & Nozzle carriers.
- Wet Sand-Blasting Equipment.
- Strainer & Filters.



### Spareparts for other brands

- Guns & accessories.
- Fittings & connections.
- Internal pump parts.
- Packings & repair kits.
- Nozzles & Nozzle carriers.



### CE 20 Series

- Complete product range of electric driven high pressure waterblasters ranging from 350 to 500 Bar in a compact design for multi-purpose applications.
- Various accessories.



### Company Profile :

Den-Jet's long experience in the high pressure industry has enabled us to create a range of water blasters and accessories, suitable for numerous applications in the industrial and marine industries. DEN-JET supplies complete packages to end-users and middlemen, as well as bare shaft pumps and parts to OEM's. Our main goal is to produce quality products at a competitive price level.

### Contact: