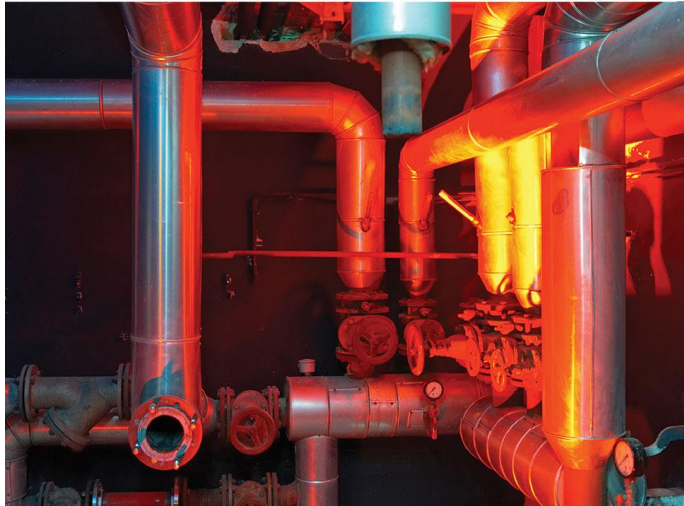


THERMAL CALIBRATOR

TC600E



TEMPERATURE CALIBRATION

- ☐ Measures up to 600 °C.
- ☐ Small dimensions.
- ☐ Thermostat Tester.

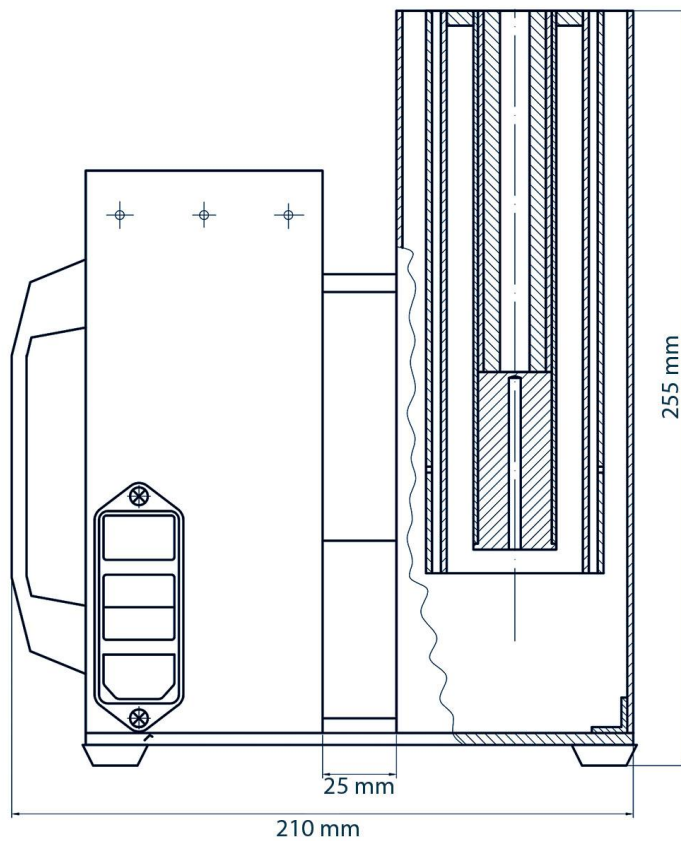
Thermal calibrator TC600E is a reliable and easy to operate temperature sensors tester, providing a temperature up to 600°C. Its solid metal construction makes the thermal calibrator resistant in hard operating conditions, e.g. in a ship's engine room.

Other advantages include:

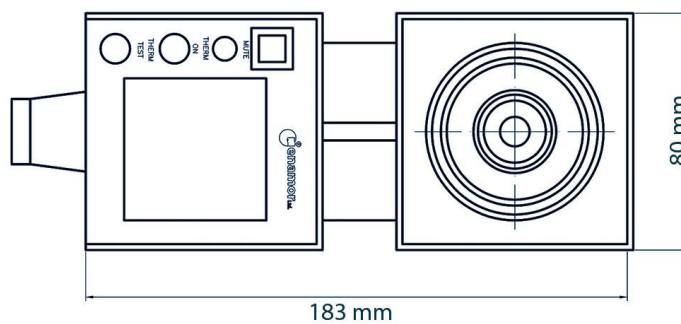
- readable and easy to operate temperature programmer
- thermostat testing system
- inserts for various sensors
- small dimensions enable testing temperature converters in places difficult to reach
- a pattern sensor is installed at the heat chamber in a place, where the examined sensor is located (the same temperature for pattern and examined sensors)



SIDE VIEW



FRONT VIEW



TECHNICAL DATA:

Supply voltage:	220VAC / 50-60Hz
Adjustment range:	30 - 600°C
Ambient temperature:	0 .. 50°C
Air humidity:	0 .. 90%
Accuracy class:	Less than 0.5%