

When you think refrigeration,  
think Flynn Refrigeration!

+44 (0)151 691 6130

**A C Flynn Refrigeration Ltd**  
Unit 7, Millbrook Road, West Float Industrial Estate,  
Birkenhead, Merseyside, CH41 1FL, United Kingdom  
Tel: +44 (0)151 691 6130 Fax: +44 (0)151 630 5368  
Email: [info@flynn-refrigeration.com](mailto:info@flynn-refrigeration.com)



The Refrigeration & Air Conditioning Specialists

# Product Catalogue



[www.flynn-refrigeration.com](http://www.flynn-refrigeration.com)

## When you think refrigeration, think Flynn Refrigeration!

Flynn Refrigeration are a leading independent supplier of all refrigeration and air conditioning systems to the marine and industrial sectors.

Our extensive product range includes new and reconditioned refrigeration compressors, new and reconditioned air compressors, BA compressors, packaged air conditioning systems, spares, pressure controls and service tools.

We have a strong network of service engineers in many ports, so wherever you need spares or service we are likely to be able to supply in the tightest of timeframes. We also perform retrofit inspections, retrofits, health checks and compressor overhauls.

Give us a call to find out how Flynn Refrigeration can take care of your refrigeration and air conditioning needs.

**FLYNN**  
**REFRIGERATION**

call our team on  
+44 (0)151 691 6130

## Contents

|   |                   |
|---|-------------------|
| TR Self Contained Marine Air Conditioning Unit      | 2                 |
| TRA Air Cooled Split Marine Air Conditioning System | 3                 |
| KWG Galley Self Contained Air Conditioning Unit     | 4                 |
| VK Air Cooled Self Contained Marine AC Unit         | 5                 |
| Standard Inverters                                  | 6                 |
| SeaMach™ Marine Air Conditioning Unit               | 10                |
| Ibis Low Profile Rooftop Air Conditioner            | 11                |
| Range of Breathing Air Compressors & Extras         | 12                |
| Holugt® Portable Unit HL120 Electric                | 14                |
| Holugt® Transportable Unit HL220 & HL270 Standard   | 15                |
| Holugt® Stationary Units HL220 & HL270 Super Silent | 16                |
| Scope of Supply                                     | Inside back cover |

Flynn Refrigeration operate a policy of constant product evaluation and improvement and we reserve the right to make such changes.



# TR Self Contained Marine Air Conditioning Unit

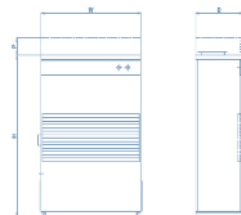
- Nominal cooling loads 7.0 kW to 70.0 kW
- Sea water / fresh water cooled through shell and tube condenser
- Refrigerant R404a
- Plenum and grille discharge
- Electro coated mild steel casing with powder coated paint finish RAL 9018 (Grey)
- Removable panels for access and maintenance
- Quick release grille for air filter cleaning and replacement
- Units supplied factory precharged only requiring suitable water and electrical connections
- Electrical supply 380V 3ph 50Hz or 440V 3ph 60Hz



Illustration depicts unit with plenum and grille discharge

## OPTIONS AVAILABLE

- Colour to suit operating environment
- Fresh air connection
- Fan pressures to suit application
- Electric heating
- 690V 3ph 60Hz electric supply
- Spigoted duct connection
- Refrigerant R134a or R407c
- See separate data sheet for air cooled TR unit



| PRODUCT CODE                     | TR02  | TR03  | TR05  | TR08  | TR10  | TR15  | TR20  |
|----------------------------------|-------|-------|-------|-------|-------|-------|-------|
| Nominal cooling load(kW)         | 7.0   | 10.5  | 17.5  | 28.0  | 35.0  | 56.0  | 70.0  |
| Nominal air flow (m³/h)          | 1080  | 1530  | 2550  | 4075  | 5100  | 7725  | 10200 |
| Plenum dis. fan motor (kW)       | 0.18  | 0.37  | 0.55  | 1.10  | 1.50  | 2.20  | 3.00  |
| Comp. motor power (kW)           | 2.89  | 3.55  | 5.48  | 9.79  | 10.94 | 19.58 | 21.88 |
| Nominal sea water qty. (m³/h)    | 1.34  | 1.43  | 2.51  | 4.14  | 6.89  | 8.28  | 13.78 |
| Nominal fresh water qty. (m³/h)  | 1.02  | 1.11  | 2.10  | 3.30  | 4.26  | 6.60  | 8.52  |
| Unit dimensions H (mm)           | 1300  | 1300  | 1600  | 1800  | 1800  | 2000  | 2100  |
| W (mm)                           | 700   | 900   | 900   | 1100  | 1250  | 1400  | 1800  |
| D (mm)                           | 450   | 450   | 550   | 650   | 650   | 850   | 850   |
| P (mm)                           | 110   | 120   | 180   | 230   | 230   | 300   | 330   |
| Unit weight (kg)                 | 169   | 193   | 246   | 312   | 365   | 557   | 668   |
| Electric Heating (optional) (kW) | 1x3.0 | 1x4.5 | 2x4.5 | 2x9.0 | 2x9.0 | 3x9.0 | 4x9.0 |

Nominal duties are based on air entering at 25°Cdb @ 50% RH utilising R404a with sea water @ 32°C or fresh water @ 36°C

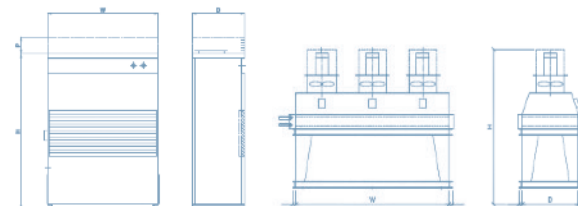
# TRA Air Cooled Split Marine Air Conditioning System

- Nominal cooling loads 10.5 kW to 70.0 kW
- Air Cooled
- Refrigerant R407c
- Internal section
  - Electro coated mild steel casing with powder coated paint finish RAL 9018 (Grey)
  - Removable panels for access and maintenance
  - Quick release grille for air filter cleaning and replacement
- External Section
  - Electro coated mild steel casing with powder coated paint finish RAL 9018 (Grey)
  - Condenser coil with Cu tubes and Cu fins
- Units supplied factory precharged
- Electrical supply 380V 3ph 50Hz or 440V 3ph 60Hz



## OPTIONS AVAILABLE

- Colour to suit operating environment
- Fan pressures to suit application
- Electric heating
- 690v 3ph 60Hz electric supply
- Refrigerant R134a
- Horizontal air flow external section
- Interconnecting piping cable



| PRODUCT CODE                          | TRA03   | TRA05   | TRA08   | TRA10   | TRA15   | TRA20   |
|---------------------------------------|---------|---------|---------|---------|---------|---------|
| Nominal cooling load(kW)              | 10.5    | 17.5    | 28.0    | 35.0    | 56.0    | 70.0    |
| Nominal air flow (evaporating) (m³/h) | 1530    | 2550    | 4075    | 5100    | 7725    | 10200   |
| Plenum dis. fan motor (kW)            | 0.37    | 0.55    | 1.10    | 1.50    | 2.12    | 3.00    |
| Comp. motor power (kW)                | 3.55    | 5.48    | 9.79    | 10.94   | 19.58   | 21.88   |
| Nominal condensing load (kW)          | 14.42   | 21.42   | 33.24   | 47.44   | 77.78   | 94.88   |
| Nominal air flow (condensing) (m³/h)  | 6624    | 9360    | 14400   | 21600   | 28080   | 37440   |
| Cond. fan motor rating (total) (kW)   | 2@0.37  | 2@0.55  | 2@0.75  | 3@0.58  | 3@0.75  | 4@0.75  |
| Electric heating (optional) (kW)      | 1 x 4.5 | 2 x 4.5 | 2 x 9.0 | 2 x 9.0 | 3 x 9.0 | 4 X 9.0 |
| <b>INTERNAL SECTION</b>               |         |         |         |         |         |         |
| Unit dimensions H (mm)                | 1300    | 1600    | 1800    | 1800    | 2000    | 2100    |
| W (mm)                                | 900     | 900     | 1100    | 1250    | 1400    | 1800    |
| D (mm)                                | 450     | 550     | 650     | 650     | 850     | 850     |
| P (mm)                                | 120     | 180     | 230     | 230     | 300     | 330     |
| Unit weight (kg)                      | 178     | 219     | 284     | 328     | 501     | 594     |
| <b>EXTERNAL SECTION</b>               |         |         |         |         |         |         |
| Unit dimensions H (mm)                | 1380    | 1400    | 1420    | 1400    | 1420    | 1420    |
| W (mm)                                | 1200    | 1400    | 1700    | 2400    | 2600    | 3200    |
| D (mm)                                | 700     | 800     | 900     | 900     | 1100    | 1100    |
| Unit weight (kg)                      | 154     | 200     | 253     | 290     | 409     | 528     |

Nominal duties are based on air entering at 35°Cdb @ 50% RH utilising R407c with ambient air at 40°C



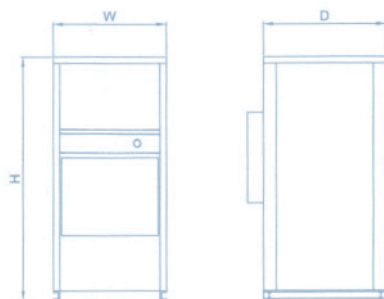
# KWG Galley Self Contained Air Conditioning Unit

- Unit designed to meet SOLAS 2000 requirement
- Nominal cooling loads 10.0 kW to 25.0 kW
- Fresh water cooled through plate heat exchanger
- Refrigerant R404a
- Ducted, filtered rear inlet and vertical discharge
- Electro coated mild steel casing with powder coated paint finish RAL 9018 (Grey)
- Removable panels for access and maintenance
- Units supplied factory precharged only requiring suitable water and electrical connections
- Electrical supply 380V 3ph 50Hz or 440V 3ph 60Hz
- Electric heating



## OPTIONS AVAILABLE

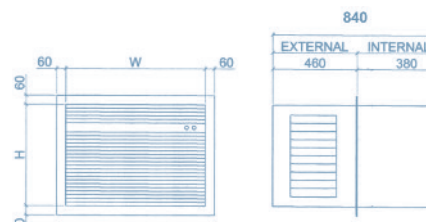
- Stainless steel 316 casing with powder coated paint finish RAL 9018 (Grey)
- Colour to suit operating environment
- Alternative fan pressures
- Split system version
- Hot water heating
- Refrigerant R134a or R407c
- Seawater cooled through coaxial condenser



| PRODUCT CODE                | KWG10 | KWG15 | KWG20 | KWG25 |
|-----------------------------|-------|-------|-------|-------|
| Nominal cooling load(kW)    | 10.0  | 15.0  | 20    | 25    |
| Nominal heating load (m³/h) | 9.0   | 12.0  | 13.5  | 18.0  |
| Nominal air flow (m³/h)     | 600   | 700   | 1100  | 1550  |
| External pressure (kW)      | 600   | 600   | 600   | 600   |
| Fan motor rating (kW)       | 0.37  | 0.37  | 0.55  | 0.75  |
| Comp. motor power (kW)      | 3.55  | 4.72  | 6.45  | 9.79  |
| Nominal water qty. (m³/h)   | 1.08  | 1.56  | 3.12  | 3.70  |
| Unit dimensions H (mm)      | 1500  | 1750  | 1750  | 1750  |
| W (mm)                      | 550   | 700   | 700   | 700   |
| D (mm)                      | 550   | 750   | 750   | 750   |
| Unit weight (kg)            | 230   | 320   | 340   | 370   |

# VK Air Cooled Self Contained Marine AC Unit

- Nominal cooling loads 3.5kW, 5.25kW, 7.00kW
- Air cooled
- Refrigerant R407c standard
- Internal section
  - Zintec coated mild steel casing with powder coated paint finish RAL 9018 (Grey)
- External section
  - Condenser fan motors to IP56
  - Cu/Cu condenser coil
  - Stainless steel 316 casing with powder coated paint finish RAL 9018 (Grey)
- Removable panels for access and maintenance
- Quick release grille for air filter cleaning and replacement
- Units supplied factory precharged
- Electric supply: 220v 1ph 50/60Hz  
380v 3ph 50Hz  
440v 3ph 60Hz



## OPTIONS AVAILABLE

- Colour to suit operating environment
- Split system version
- Electric heating
- Refrigerants R404a, R134a

| PRODUCT CODE                     | VK12  | VK18  | VK24   |
|----------------------------------|-------|-------|--------|
| Nominal cooling load(kW)         | 3.50  | 5.25  | 7.00   |
| Nominal air flow -low (m³/h)     | 400   | 500   | 800    |
| -high (m³/h)                     | 500   | 675   | 1000   |
| Evap. fan motor rating (kW)      | 0.037 | 0.045 | 0.074  |
| Comp. motor power (kW)           | 1.87  | 2.28  | 2.89   |
| Cond. fan motor rating (kW)      | 0.18  | 0.25  | 2@0.18 |
| Unit dimensions H (mm)           | 450   | 550   | 550    |
| W (mm)                           | 760   | 760   | 1060   |
| Unit weight (kg)                 | 120   | 130   | 190    |
| Electric heating (optional) (kW) | 1.5   | 1.5   | 3.0    |

# Standard Inverters

## SRK-ZJ (2.5-5.0 kW)

Packed with features and the latest technologies in room air conditioning, the SRK Standard Inverter range offers energy efficient cooling and heating for individual rooms with a range of models from 2.5kW - 5.0kW cooling capacity. Featuring anti-allergen and deodorizing filters, a self clean operation, high power and economy modes, quiet operation and three dimensional louver controls for increased comfort.



### FUNCTION

- Allergen System
- Self Clean Operation
- Allergen Filter
- Sun Filter
- Fuzzy
- Auto
- Hi Power

### COMFORTABLE AIR FLOW

- 3D Auto
- Auto Flap
- Memory
- Up/Down
- Lateral Swing
- Positioning of Installation

### CONVENIENT & ECONOMY

- Economy
- Dry
- Off Timer
- Sleep
- 24h Timer
- On Timer

### MAINTENANCE & PREVENTION

- MC
- Self Diagnostic
- Detachable

### OTHERS

- Backup Switch
- Auto Restart
- Luminous

## SRK-ZK (6.3-8.0 kW)

The all new SRK-ZK range is an extension of the standard inverter range which combines all the same features in new larger capacity models from 6.3kW - 8.0kW cooling capacity. The ZK range also features extended pipe runs up to 30m.



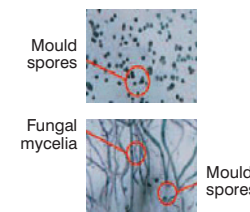
## Self clean operation

A new feature of wall mounted indoor units is the "self clean operation". When selected by the user, the unit will operate in a self clean mode for 2 hours after the unit has stopped its normal operation, removing moisture to prevent mould growth.

### Mould development in seven days:

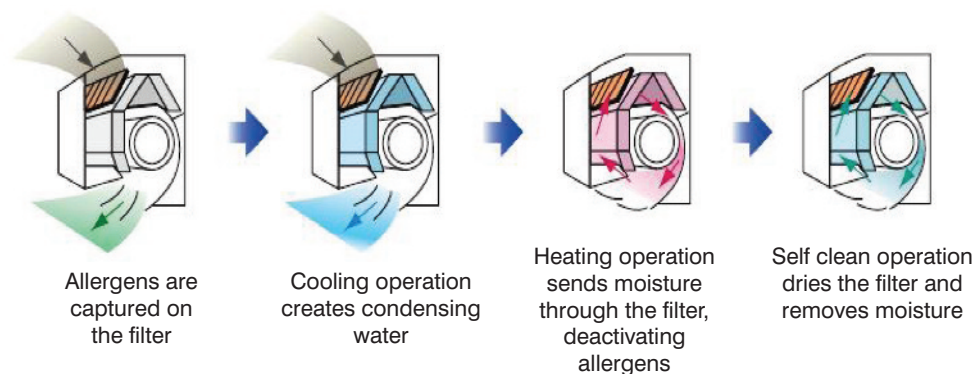
Selecting the "self clean operation" prevents mould spores from developing.

Without selecting the "self clean operation" fungal mycelia can develop from mould spores.



## Allergen clear system

To maintain fresh conditioned air in the room, an anti-allergen filter is included to capture and suppress allergens by controlling the temperature and humidity.



| INDOOR UNIT c/w IR Controller                   | SRK25ZJ-S         | SRK35ZJ-S         | SRK50ZJ-S         | SRK63ZK-S           | SRK71ZK-S           | SRK80ZK-S           |
|---|-------------------|-------------------|-------------------|---------------------|---------------------|---------------------|
| OUTDOOR UNIT                                    | SRC25ZJ-S         | SRC35ZJ-S         | SRC50ZJ-S         | SRC63ZK-S           | SRC71ZK-S           | SRC80ZK-S           |
| Cooling (nominal) (kW)                          | 2.5               | 3.5               | 5.0               | 6.3                 | 7.1                 | 8.0                 |
| Cooling range (kW)                              | 1.0 to 2.9        | 1.0 to 3.8        | 1.6 to 5.5        | 2.2 to 7.1          | 2.2 to 8.0          | 2.2 to 8.5          |
| UK cooling (kW)                                 | 2.4               | 3.3               | 4.8               | 6.0                 | 6.8                 | 7.6                 |
| UK sensible cooling (kW)                        | 1.9               | 2.6               | 3.4               | 4.7                 | 5.1                 | 5.7                 |
| E.E.R (energy label)                            | 4.03 (A)          | 3.47 (A)          | 3.23 (A)          | 3.58 (A)            | 3.29 (A)            | 3.02 (B)            |
| Heating (nominal) (kW)                          | 3.2               | 4.0               | 5.8               | 7.1                 | 8.0                 | 9.0                 |
| Heating range (kW)                              | 1.2 to 4.2        | 1.3 to 4.8        | 1.6 to 6.6        | 1.7 to 9.5          | 1.6 to 10.0         | 1.7 to 10.5         |
| C.O.P (energy label)                            | 4.00 (A)          | 4.00 (A)          | 3.65 (A)          | 3.97 (A)            | 3.74 (A)            | 3.53 (B)            |
| Operating range (outdoor air) cooling (°C DB)   | -15 to 46         | -15 to 46         | -15 to 46         | -15 to 46           | -15 to 46           | -15 to 46           |
| Operating range (outdoor air) heating (°C WB)   | -15 to 21         | -15 to 21         | -15 to 21         | -15 to 21           | -15 to 21           | -15 to 21           |
| INDOOR UNIT                                     |                   |                   |                   |                     |                     |                     |
| Exterior dimensions HxWxD (mm)                  | 294x798x229       | 294x798x229       | 294x798x229       | 318x1098x248        | 318x1098x248        | 318x1098x248        |
| Net weight (kg)                                 | 9.5               | 9.5               | 9.5               | 15                  | 15                  | 15                  |
| Air volume (UL/L/M/H) cooling (m³/s)            | na/0.08/0.10/0.13 | na/0.08/0.11/0.17 | na/0.09/0.13/0.19 | 0.13/0.22/0.27/0.31 | 0.13/0.23/0.29/0.33 | 0.13/0.25/0.31/0.35 |
| Air volume (UL/L/M/H) heating (m³/s)            | na/0.09/0.11/0.18 | na/0.10/0.16/0.21 | na/0.13/0.17/0.23 | 0.21/0.24/0.30/0.34 | 0.23/0.26/0.33/0.36 | 0.25/0.28/0.34/0.39 |
| Sound pressure level (UL/L/M/H) cooling (dB(A)) | na/21/28/34       | na/22/32/42       | na/33/42/48       | 26/37/43/47         | 26/39/45/49         | 26/41/47/50         |
| Sound pressure level (UL/L/M/H) heating (dB(A)) | na/24/31/39       | na/25/37/43       | na/36/45/48       | 33/36/41/44         | 35/38/43/46         | 37/40/45/48         |
| OUTDOOR UNIT                                    |                   |                   |                   |                     |                     |                     |
| Exterior dimensions HxWxD (mm)                  | 540x780(+62)x290  | 540x780(+62)x290  | 640x800(+71)x290  | 750x880(+88)x340    | 750x880(+88)x340    | 750x880(+88)x340    |
| Net weight (kg)                                 | 32                | 35                | 42                | 57                  | 57                  | 57                  |
| Sound pressure level (dB(A))                    | 49                | 51                | 53                | 50                  | 53                  | 56                  |
| ELECTRICAL DATA                                 |                   |                   |                   |                     |                     |                     |
| Power source rating MCB (A)                     | 16                | 16                | 20                | 25                  | 25                  | 25                  |
| Mains power to outdoor                          | 230V/1ph/50Hz     | 230V/1ph/50Hz     | 230V/1ph/50Hz     | 230V/1ph/50Hz       | 230V/1ph/50Hz       | 230V/1ph/50Hz       |
| Interconnecting wires                           | 3 + E             | 3 + E             | 3 + E             | 3 + E               | 3 + E               | 3 + E               |
| Running current cooling (A)                     | 3.1               | 4.7               | 6.8               | 8.0                 | 9.7                 | 11.9                |
| Running current heating (A)                     | 3.8               | 4.7               | 7.0               | 8.1                 | 9.7                 | 11.4                |
| Power input cooling (kW)                        | 0.62              | 1.01              | 1.55              | 1.76                | 2.16                | 2.65                |
| Power input heating (kW)                        | 0.80              | 1.00              | 1.59              | 1.79                | 2.14                | 2.55                |
| Start - max run current (A)                     | 4 – 9             | 5 – 9             | 7 – 14            | 8 – 17              | 10 – 17             | 12 – 17             |
| INSTALLATION / REFRIGERANT                      |                   |                   |                   |                     |                     |                     |
| Ref piping size o.d ins (mm) (LIQUID)           | 1/4" (6.35)       | 1/4" (6.35)       | 1/4" (6.35)       | 1/4" (6.35)         | 1/4" (6.35)         | 1/4" (6.35)         |
| Ref piping size o.d ins (mm) (GAS)              | 3/8" (9.52)       | 3/8" (9.52)       | 1/2" (12.7)       | 5/8" (15.88)        | 5/8" (15.88)        | 5/8" (15.88)        |
| Ref max piping length (m)                       | 15                | 15                | 25                | 30                  | 30                  | 30                  |
| Vertical height difference MAX                  |                   |                   |                   |                     |                     |                     |
| Outdoor unit above indoor unit (m)              | 10                | 10                | 15                | 20                  | 20                  | 20                  |
| Outdoor unit below indoor unit (m)              | 10                | 10                | 15                | 20                  | 20                  | 20                  |
| Refrigerant amount precharged (kg)              | 0.9               | 1.1               | 1.35              | 1.8                 | 1.8                 | 1.8                 |
| For pipe length up to (m)                       | 15                | 15                | 15                | 15                  | 15                  | 15                  |
| Additional refrigerant (g/m)                    | n/a               | n/a               | 20                | 25                  | 25                  | 25                  |

# SeaMach™ Marine Air Conditioning Unit

Turn your cabin into a cool refuge from the heat of the day with a SeaMach™ Marine Air Conditioner. Built with protection against the added vibration and saltwater corrosion experienced on water, the SeaMach™ is an investment in quality you can rely on, season after season. SeaMach™ has a powerful 13,500 nominal BTU cooling capacity. It can be equipped with an Elect-a-Heat option that will take the chill off your cabin on cooler outings. SeaMach™ is manufactured by the leading maker of air conditioners for recreational vehicles and off-road RV applications.



- All exposed sheet metal parts utilize a baked enamel finish for corrosion protection.
- Flexible refrigeration hoses provide the utmost in shock protection.
- Operates from a generator or 110-volt shore power.
- The fan motor is totally enclosed in an epoxy-coated housing and features a stainless steel shaft for optimum corrosion protection.
- MagnaGard screws are chemically treated to resist corrosion. Plastic drain pan eliminates further corrosion.
- Raised lance fins on the coils increase the turbulence for heat transfer, enhancing the efficiency of the cooling process.
- The top and bottom of the compressor are secured to the air conditioner chassis, reducing the potential for damage to the system when used in high stress applications.
- Start kit with start capacitors and relays is provided as standard equipment to make starting easier under high temperature and humidity conditions.

| SEAMACH MARINE                      | 48203-8866        |
|-------------------------------------|-------------------|
| Nominal BTU Cooling Capacity        | 13,500            |
| Unit Weight (lbs.)*                 | 91                |
| Approximate Full-Load Amps/Cooling  | 15.5              |
| Approximate Full-Load Amps/Heating* | 16                |
| Delivered BTU Heating Output*       | 5,600             |
| Locked Rotor Cooling Amps           | 63                |
| Unit dimensions                     | 66 x 67 x H35 cm  |
| Unit weight (kg)                    | 49kg              |
| Electrical Rating                   | 115V 60Hz 1Phase` |

\*Optional Heat/Cool Ceiling Assembly  
\*\*Installed weight will vary with Ceiling Package option  
Important: It is not the policy of RV Products to size generators for application in recreational vehicles. However, when sizing generators, the electrical power consumption in watts for the entire vehicle must be determined and taken into consideration, such as:  
A. Maximum running watts of the air conditioner at A.R.I. Maximum operating conditions (see specifications).  
B. Power consumption of electronic ovens, toasters, coffee makers, television sets, refrigerators, lights, etc.  
C. Generators do lose capacity under the following conditions: (1) altitude increases above sea level, (2) temperature increases above certain outdoor design temperatures, and (3) lack of maintenance.

# Ibis Low Profile Rooftop Air Conditioner

A world leading, ultra-low profile roof top air conditioner designed for the most rugged conditions.

The Ibis provides both heating and cooling as well as filtered and dehumidified air.

Its chassis and canopy are one full piece of urethane mouldings which form a rock solid monocoque structure. The Ibis is now the unit of choice for the US Navy and Coast Guard Patrol Boats, Australian military landing craft and Singapore and Hong-Kong Water Police.

Because of all its advantages, the Ibis is also an excellent heat pump for industrial applications.



| IBIS                          |                       |
|-------------------------------|-----------------------|
| Cooling Capacity              | 3200W                 |
| Heating Capacity              | 3200W                 |
| Amps Cooling                  | 5,1A                  |
| Amps Heating (heat pump)      | 5,1A                  |
| Start-up Amps                 | 20A max / 0,15s       |
| Electrical Rating             | 230v 50Hz 1 Phase     |
| Circuit Breaker               | 8A                    |
| Refrigerant                   | R407C                 |
| Ventilator Speeds             | 3                     |
| Air Flow                      | 504 cbm/h max         |
| Dimensions (roof unit)        | 104 x 82.5 x H22 cm   |
| Dimensions (ceiling assembly) | 55.5 x 53.5 x H6.5 cm |
| Roof Opening                  | 36 x 36 or 40 x 40 cm |
| Roof Thickness                | 12 cm max             |
| Weight                        | 49kg                  |



# Range of Breathing Air Compressors



HL120E

- Capacity: 80-100 l/min
- Sizes: 65 x 35 x 39 cm
- Weight: 39,5 kg



HL110-120B

- Capacity: 100 l/min
- Sizes: 78 x 35 x 32 cm
- Weight: 37 / 47 kg



HL150 STD

- Capacity: 135 l/min
- Sizes: 89 x 63 x 44 cm
- Weight: 99 kg



HL220-270 STD

- Capacity: 215 / 265 l/min
- Sizes: 89 x 82 x 132 cm
- Weight: 99 / 109 kg



HL220-270 D

- Capacity: 215 / 265 l/min
- Sizes: 115 x 49 x 65 cm
- Weight: 126 kg



HL220-270 MT

- Capacity: 215 / 265 l/min
- Sizes: 115 x 59 x 65 cm
- Weight: 136 / 158 kg



HL220-270 SILENT

- Capacity: 220 / 270 l/min
- Sizes: 92 x 61 x 85 cm
- Weight: 141 / 151 kg



HL220-270 SUPERSILENT

- Capacity: 220 / 270 l/min
- Sizes: 89 x 82 x 132 cm
- Weight: 212 / 222 kg



HL460-600 SILENT

- Capacity: 440 / 540 l/min
- Sizes: 90 x 87 x 133 cm
- Weight: 286 / 306 kg



HL270 NITROX

- Capacity: 250 l/min
- Sizes: 133 x 97 x 125 cm
- Weight: 382 kg
- LD + HD compressor
- O2 membrane
- Alternative: Nitrox blending system loose



HL500 SUPERSILENT

- Capacity: 500 l/min
- Sizes: 169 x 94 x 133 cm
- Weight: 420 kg
- Max. pressure 450 bar
- Picture 'Open' version



HL500 SUPERDRY

- Capacity: 500 l/min
- Sizes: 169 x 94 x 133 cm
- Weight: 430 kg
- Max. pressure 450 bar



HL600 SUPER SILENT

- Capacity: 600 l/min
- Sizes: 169 x 94 x 133 cm
- Weight: 420 kg
- Max. pressure 450 bar



EXTRAS

- Holugt make filling bars and can deliver storage and/or cascade systems to breathing air workshops according clients demands. Air quality is tested electronically.



65200120

- Holugt Endfilter**  
Holugt endfilter for the HL110 and HL120.  
The endfilter has a triple way of working:
- Dustfilter
  - Active carbon
  - Molecular sieve



65200069

- Holugt Suction filter**  
Holugt suction filter element.  
HL110 and HL120 compatible.



65110190

- Holugt Oil**  
Holugt synthetic oil is suitable for use in breathing air compressors. This oil does not contain toxic particles. Available in 0,5 L or 1 L containers



65900017

- Holugt 300/200 bar Filling device**  
This device is screwed on the bottle side of a standard DIN300 bar filling whip. The secondary side of the device can be put on a 200 bar DIN bottle. The safety valve prevents pressure to reach higher than 225 bar.



# Holugt® Portable Unit HL120 Electric

## SPECIFICATIONS

- Capacity (litre per minute) 100
- Maximum pressure (bar) 330
- Working pressure (bar) 200 or 300
- Dimensions (cm) 65x35x39
- Weight (kg) 39.5
- Sound Level (dB) 87
- Connections INT 200 or DIN 200/300
- Air quality EN 12021



## OPTIONS AVAILABLE

- Interstage safety valves (65220030)
- Filling unit for 200/300 bar
- Frame in Stainless Steel

## Extras

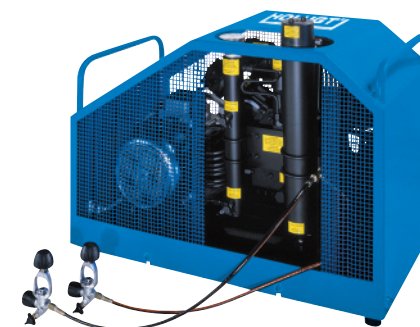
- Filling device 300/200 bar with 200b safety valve
- Automatic drainage and start/stop (pressure switch)

| PRODUCT CODE | Drive        | Voltage | Hz       | kW  |
|--------------|--------------|---------|----------|-----|
| 65220022     | Single-phase | 115     | 60       | 2.2 |
| 65220024     | Single-phase | 230     | 50       | 2.2 |
| 65220026     | Single-phase | 230     | 60       | 2.2 |
| 65220027     | Three-phase  | 230     | 50 or 60 | 3   |
| 65220028     | Three-phase  | 400     | 50       | 3   |
| 65220030     | Three-phase  | 440     | 60       | 3   |

Completely according CE normation

# Holugt® Transportable Units HL220 & HL270 Standard

- Max. pressure: 330 bar
- Working pressure: 200 or 300 bar
- Connections: INT 200 or DIN 200/300
- Air quality: EN 12021
- Manual control start/stop
- 2 Filling whips incl. connecting valves



## OPTIONS

- Filling bar (HL270 Tech may be integrated)
- Auto board (only with E-versions)



## TECHNICAL SUPPORT

We are available 24 hours a day for any emergencies that may arise.

Please contact

+44 (0)151 691 6130

info@flynn-refrigeration.com

Out-of-hours emergengies +44 (0)7775 919 330

**FLYNN**  
**REFRIGERATION**

[www.flynn-refrigeration.com](http://www.flynn-refrigeration.com)

| SPECIFICATIONS              | HL220 electric         | HL270 electric         | HL220 diesel           | HL270 tech             |
|-----------------------------|------------------------|------------------------|------------------------|------------------------|
| Capacity (litre per minute) | 215                    | 220                    | 265                    | 220                    |
| Maximum pressure (bar)      | 330                    | 330                    | 330                    | 330                    |
| Working pressure (bar)      | 200/300                | 200/300                | 200/300                | 200/300                |
| Dimensions (cm)             | 88x64x48               | 115x49x65              | 88x64x48               | 113x49x65              |
| Weight (kg)                 | 99                     | 126                    | 109                    | 126                    |
| Sound Level (dB)            | 83                     | 86.4                   | 85                     | 95.6                   |
| Connections                 | INT 200 or DIN 200/300 | INT 200 or DIN 200/300 | INT 200 or DIN 200/300 | INT 200 or DIN 200/300 |
| Air quality                 | EN 12021               | EN 12021               | EN 12021               | EN 12021               |
| Drive                       | Three-phase            | Three-phase            | Lombardini Diesel      | Lombardini Diesel      |
| Voltage                     | 380/400                | 380/400                | -                      | -                      |
| Hz                          | 50/60                  | 50/60                  | -                      | -                      |
| kW                          | 4.8                    | 6.6                    | 6.6                    | 6.6                    |

# Holugt® Stationary Units HL220 & HL270 Super Silent

## STANDARD ACCESSORIES

- Start/stop
- Auto start/stop on end pressure
- Analogue hour counter
- Adjustable pressure switch
- Water and oil separator
- Automatic condensate drainage
- Oil level glass visible
- Temperature switch
- Oil level guard



## EVOLUTION PACKAGE OPTION

- Glycerine filled gauges
- Airsafe 300
- Dual pressure device

| SPECIFICATIONS              | HL220                  | HL270                  |
|-----------------------------|------------------------|------------------------|
| Capacity (litre per minute) | 220                    | 270                    |
| Maximum pressure (bar)      | 330                    | 330                    |
| Working pressure (bar)      | 200/300                | 200/300                |
| Dimensions (cm)             | 89x82x132              | 89x82x132              |
| Weight (kg)                 | 212                    | 222                    |
| Sound Level (dB)            | 70                     | 75                     |
| Connections                 | INT 200 or DIN 200/300 | INT 200 or DIN 200/300 |
| Air quality                 | EN 12021               | EN 12021               |
| Drive                       | Three-phase            | Three-phase            |
| Voltage                     | 380/400                | 380/400                |
| Hz                          | 50/60                  | 50/60                  |
| kW                          | 4                      | 5.5                    |

Completely according CE normation

## Scope of Supply

| Manufacturers / Products         | Expected Lead Time      | Manufacturers / Products           | Expected Lead Time       |
|----------------------------------|-------------------------|------------------------------------|--------------------------|
| ABB FLAKT                        | 10-15 WORKING DAYS      | <b>HOLUGT SAUER</b>                | <b>5-7 WORKING DAYS</b>  |
| <b>ALCO</b>                      | <b>5-7 WORKING DAYS</b> | HOWDEN                             | 10-15 WORKING DAYS       |
| ALFA LAVAL                       | 7-10 WORKING DAYS       | HTI                                | 5-7 WORKING DAYS         |
| ATLAS COPCO                      | 7-10 WORKING DAYS       | <b>INGERSOLL RAND</b>              | <b>5-7 WORKING DAYS</b>  |
| <b>BAUER</b>                     | <b>5-7 WORKING DAYS</b> | <b>J &amp; E HALL</b>              | <b>5-7 WORKING DAYS</b>  |
| <b>BITZER</b>                    | <b>NORMALLY STOCK</b>   | JMW PUMP SPARES                    | 10-15 WORKING DAYS       |
| <b>BOCK</b>                      | <b>NORMALLY STOCK</b>   | JOHN CRANE SEALS                   | 5-7 WORKING DAYS         |
| BRISTOL COMPRESSORS              | 10-15 WORKING DAYS      | <b>JOHNSON CONTROLS</b>            | <b>5-7 WORKING DAYS</b>  |
| BROOMWADE                        | 10-15 WORKING DAYS      | <b>JP SAUER &amp; SOHN</b>         | <b>5-7 WORKING DAYS</b>  |
| <b>CARRIER/CARLYLE</b>           | <b>NORMALLY STOCK</b>   | KAESER                             | 10-15 WORKING DAYS       |
| CENTURY                          | 10-15 WORKING DAYS      | KVAERNER COMPRESSORS/SPARES        | 20-25 WORKING DAYS       |
| CLIMATROL                        | 5-7 WORKING DAYS        | LEAK DETECTORS                     | 5-7 WORKING DAYS         |
| COMEFRI                          | 10-15 WORKING DAYS      | LIGHTFOOT                          | 10-15 WORKING DAYS       |
| <b>COMPAIR</b>                   | <b>5-7 WORKING DAYS</b> | LORUIS - TEMP CONTROLS ETC         | 20 WORKING DAYS          |
| <b>COPELAND</b>                  | <b>5-7 WORKING DAYS</b> | <b>L'UNITE HERMETIQUE/TECUMSEA</b> | <b>5-7 WORKING DAYS</b>  |
| DAIKIN                           | 10-15 WORKING DAYS      | <b>MANEUROP COMPRESSORS</b>        | <b>5-7 WORKING DAYS</b>  |
| <b>DANFOSS</b>                   | <b>NORMALLY STOCK</b>   | MAYEKAWA                           | 20 WORKING DAYS          |
| DOMINIC HUNTER                   | 20-25 WORKING DAYS      | MYCOM                              | 5-7 WORKING DAYS         |
| DORIN                            | 7-10 WORKING DAYS       | NISSIN AIR CONDITIONING            | 10-15 WORKING DAYS       |
| DUNHAM BUSH                      | 10-15 WORKING DAYS      | NOVENCO                            | 10-15 WORKING DAYS       |
| ELECTRIC MOTORS                  | 7-10 WORKING DAYS       | PENN CONTROLS                      | 5-7 WORKING DAYS         |
| ELECTROLUX COMPRESSOR            | 10-15 WORKING DAYS      | PRESSURE TRANSMITTERS              | 10-15 WORKING DAYS       |
| FINCOIL                          | 20-25 WORKING DAYS      | PUMPS                              | 5-7 WORKING DAYS         |
| <b>FLYWHEELS/PULLEY/BEARINGS</b> | <b>3-5 WORKING DAYS</b> | <b>REFRIGERANTS AND OILS</b>       | <b>3-5 WORKING DAYS</b>  |
| FRICK COMPRESSORS/SPARES         | 10-15 WORKING DAYS      | ROLLER CONDENSORS/EVAPORATORS      | 10-15 WORKING DAYS       |
| GAST                             | 20-25 WORKING DAYS      | <b>SABROE</b>                      | <b>NORMALLY STOCK</b>    |
| <b>GRAM</b>                      | <b>NORMALLY STOCK</b>   | SAGINOMIYA CONTROLS                | 10-15 WORKING DAYS       |
| <b>GRASSO</b>                    | <b>NORMALLY STOCK</b>   | SAUTER PRESSURE CONTROLS           | 10-15 WORKING DAYS       |
| <b>GRENCO</b>                    | <b>5-7 WORKING DAYS</b> | SCOTSMAN ICE MAKES/SPARES          | 10-15 WORKING DAYS       |
| GRUNDFOSS                        | 10-15 WORKING DAYS      | SEAWATER CONDENSORS                | 10-15 WORKING DAYS       |
| <b>HAMWORTHY</b>                 | <b>5-7 WORKING DAYS</b> | <b>SPERRE</b>                      | <b>7-10 WORKING DAYS</b> |
| <b>HANKINSON</b>                 | <b>5-7 WORKING DAYS</b> | <b>STAL</b>                        | <b>NORMALLY STOCK</b>    |
| <b>HATLAPA</b>                   | <b>5-7 WORKING DAYS</b> | SULZER                             | 10-15 WORKING DAYS       |
| HEATING ELEMENTS                 | 10-15 WORKING DAYS      | TAMROTOR                           | 10-15 WORKING DAYS       |
| HELPMAN                          | 20-25 WORKING DAYS      | TANABE                             | 10-15 WORKING DAYS       |
| HENRY VALVES/DRIERS              | 20-25 WORKING DAYS      | TEMPERATURE PROBES/SENSORS ETC     | 5-7 WORKING DAYS         |
| HIGH PRESSURE CENTRIFUGAL FANS   | 10-15 WORKING DAYS      | TIME SWITCHES/RELAYS               | 10-15 WORKING DAYS       |
| HI-PRESS                         | 20-25 WORKING DAYS      | USHIO REINETSU                     | 10-15 WORKING DAYS       |
| HITACHI                          | 20-25 WORKING DAYS      | <b>V BELTS</b>                     | <b>3-5 WORKING DAYS</b>  |