



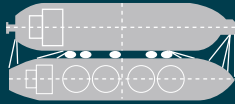
# LNG PORT INFO



**150+**  
LNG PORTS



**FSRUs**  
INCLUDED



**50+**  
COUNTRIES



LNG Port Info is a database that collates, in a comprehensive and standardised format, all the information required to visit LNG terminals around the world.

With over 150 terminals (including FSRUs) in over 50 countries, LNG Port Info covers about 75% of all LNG terminals. The data is kept up to date and expanded to include new developments.

Essential for any LNGC owner, operator or charterer, the SIGTTO General Purposes Committee (GPC) gave their support to this project in April 2015 (further ratified by the SIGTTO Board in May 2015), and it is a vital tool for the continuing evolution of the LNG industry. It was recognised that such a product would assist the industry, contribute to safer operations and save valuable time for all those involved in the shipping of LNG.



## **Contents Listing**

For each terminal, the following information is available:

### **Pre-Arrival**

- Arrival reporting
- Pilotage
- Tugs
- Anchoring

### **Berth Info**

- Berth parameters
- Gangway and shore access
- Stores and supplies

### **Emergency**

- General information
- Port emergency plans
- Incidents

### **Mooring and Fendering**

- Mooring requirements
- Mooring plans
- Mooring dolphins
- Fenders

### **Cargo Operations**

- Loading arms
- Emergency shutdown
- Cargo transfer

### **Navigation**

- Seabuoys to berth
- Charts
- Tides
- Passage restrictions



LNG Port Info also has a built-in Quick Ship Check to allow you to identify suitable terminals or limiting parameters for ships to access the berth.

## Subscription Options

Access to the LNG Port Info database is sold as a yearly subscription, with three options to choose from:

- Office Access: £2,500/year, allowing access for 1 user
- Fleet Access: £1,500/year, allowing access for 3-5 vessels
- Global Access: £8,000/year, allowing access for unlimited users, whether onshore or offshore.



Your subscription gives you access to the database for a full year. You will be able to see all the information that a ship visiting a terminal would require to assist her pre-arrival, as well as use the Quick Ship Check option for ship/shore compatibility purposes.

An LNG Port Info subscription can be combined with an account for our SHIPMOOR mooring analysis software to allow for an in-depth compatibility assessment. A special fleet subscription rate is also available on demand.



### For more info



[www.lngport.info](http://www.lngport.info)



[shop.witherbys.com](http://shop.witherbys.com)

If you are interested in purchasing a subscription for more than five vessels or multiple office users, please get in touch and we will be happy to discuss your requirements and the best subscription option for you.



If you would like to trial the system, please contact [lng.ports@witherbys.com](mailto:lng.ports@witherbys.com)



## **About Us**

Witherbys was founded in 1740 and is the oldest independent publisher in the English speaking world. Publishing operational guidance and technical standards for the shipping industry with in-house technical experts and in collaborative partnership with a number of key industry bodies (including BIMCO, CDI, IACS, IMarEST, the International Chamber of Shipping, OCIMF, SIGTTO and the UK Chamber of Shipping) means that Witherbys is able to produce timely and detailed content on matters of current or future focus. Typically, these publications promote an enhanced understanding of the regulations, recommendations and guidelines issued by the industry body or by the IMO.

Witherbys' LNG range includes a series of LNG-focused books developed in-house, SIGTTO publications, the LNG Port Info database, and the mooring analysis software SHIPMOOR, developed in collaboration with HR Wallingford.



---

**Witherby Publishing Group**  
[www.witherbys.com](http://www.witherbys.com)