

# Forenta

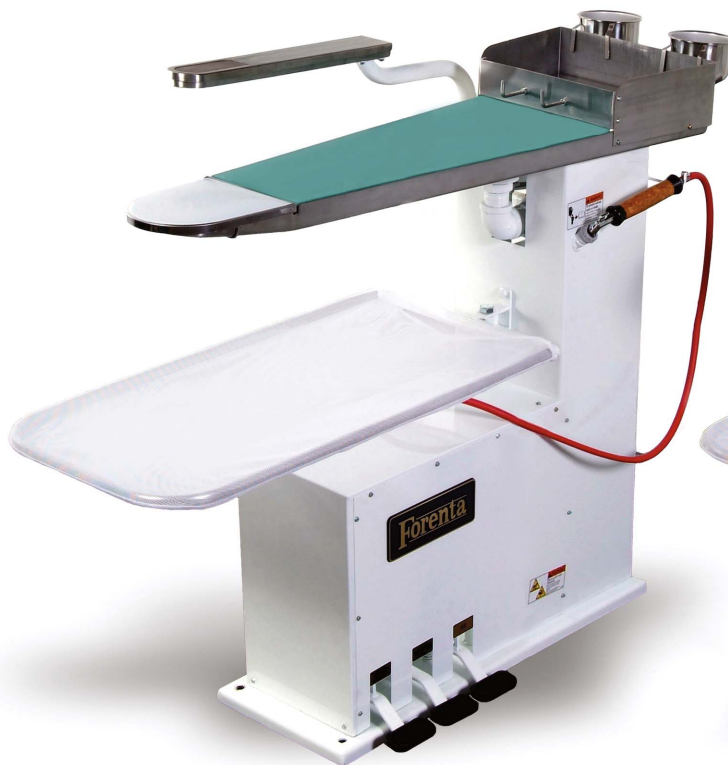
Morristown, TN U.S.A.

## Spotting Board

Model 44SP (Stainless Top)

Model 44SPG (Glass Top)

- Forenta spotting system for better spot removal
- Stainless steel or glass top to aid in spot removal
- Specially designed valves give virtually no steam leaks, easily maintained
- Vacuum with foot pedal to main board or sleeve board by positioning of sleeve board
- Heated air for faster drying
- Fabric catch tray swivels to hold garments while spotting



44SPG



44SP

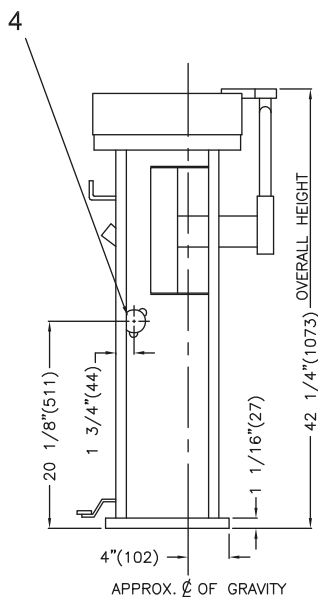
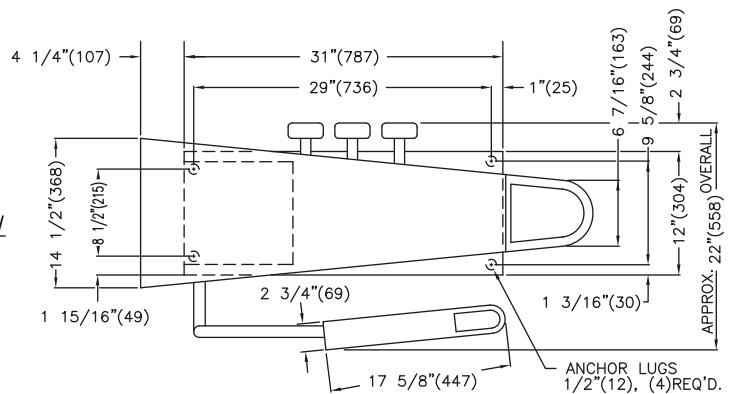
# Specifications

## Models 44SP / 44SPG

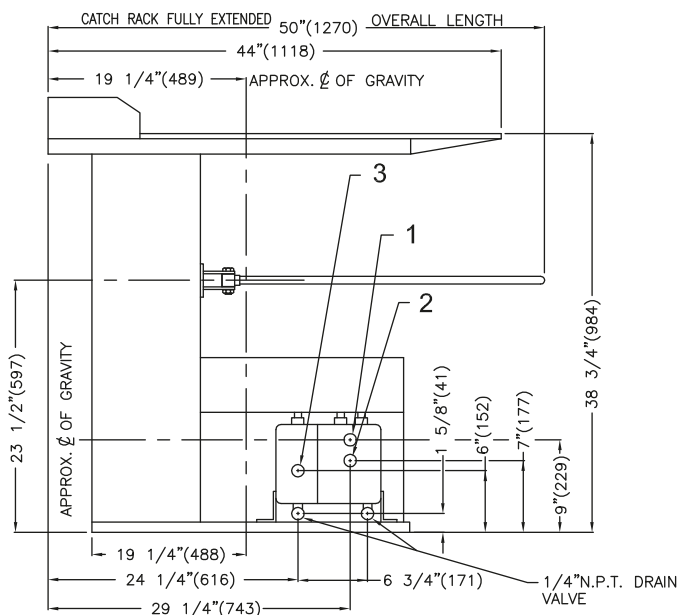
Steam and Air connection		44SP/44SPG
Steam Inlet	NPT	1/2"
Steam Outlet	NPT	1/2"
Recommended steam pressure	PSIG kPa	75-85 517-586
Steam consumption @ 80psig(552 kPa)	BHP kg/hr	1 15.6
Compressed air	NPT	1/2"
Air consumption	free air/cycle at 80psig free air/cycle at 552kPa	3.0 cu.ft. 85 liters
Recommended air pressure	PSIG kPa	80 552
Air Vacuum Connection	NPT	1 1/4"
Weight (crated)		
Shipping	lbs kg	244 111
1 Steam Connection      3 Air connection 2 Steam Outlet        4 Air Vacuum Connection		

## Detail Line Drawing (millimeters shown in parentheses)

TOP VIEW



END VIEW



REAR VIEW