



FactorShip

Product info

Winches

Steering gears

Cranes

Hatch covers

March 5th, 2025

Who are we?



- team of ex-owner and employees of Hatlapa/MacGregor
- 30 years of experience within this product range
- production facilities in Hamburg and Shanghai

What is the design of winches?

- a. Mechanical part
- b. Drive
- c. Control



What do we support?

- a. Mechanical part
- b. Drive
- c. Control

Brand: HATLAPA, TTS-Kocks, (KGW)

→ a. b. c.

→ For a. we need the 6-digit article nos. of Hatlapa

OTHER BRANDS

→ b. c.

→ Drives: electric and hydraulic

→ Controls: electric and hydraulic

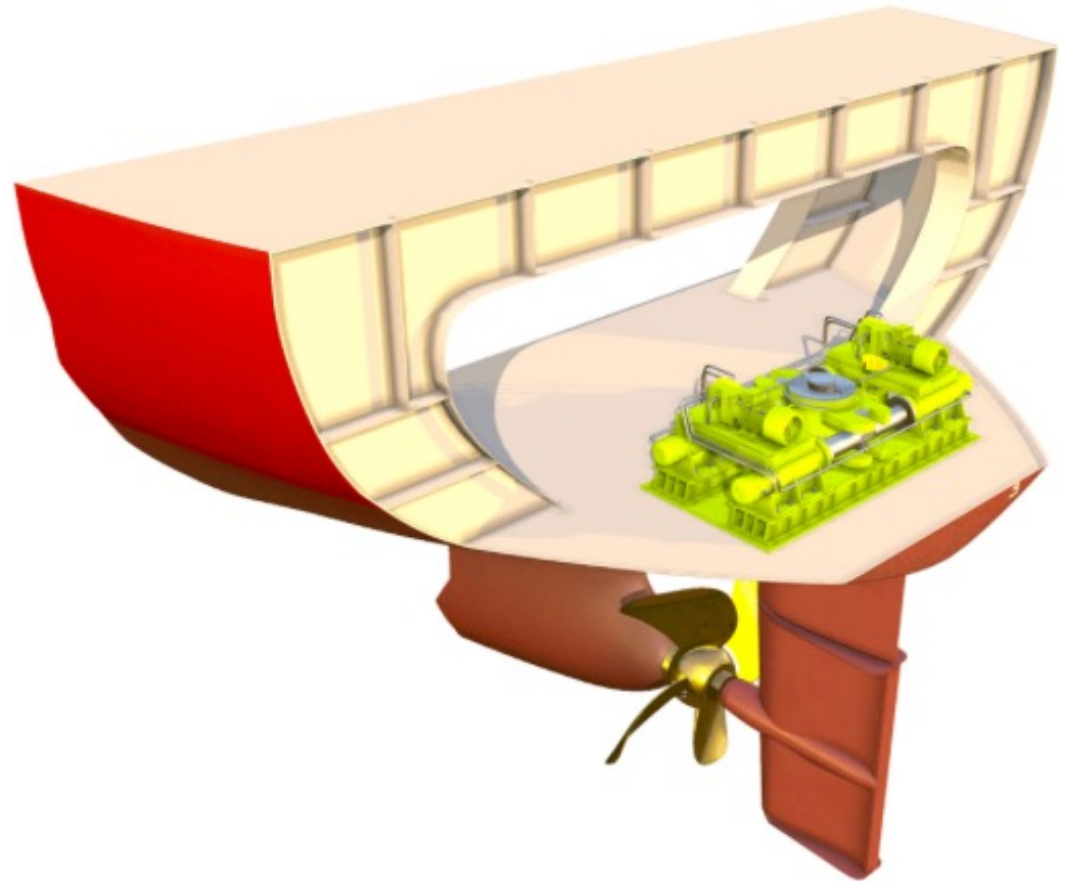


What do we support?

- On Hatlapa-products, Know-How base only with MCG and Factorship
- EX STOCK HAMBURG...meanwhile stock value 400k EUR

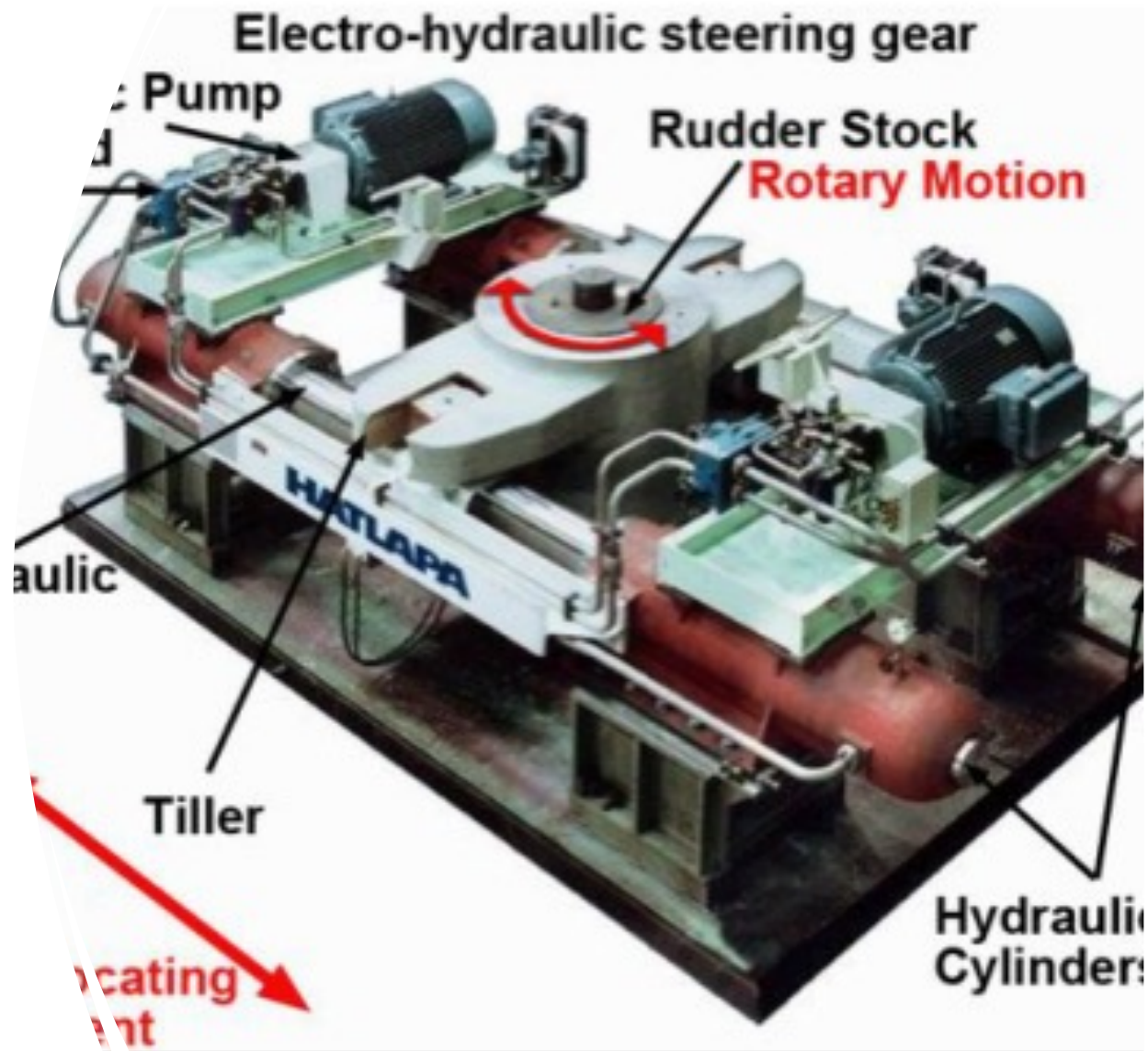


What about
steering gears?



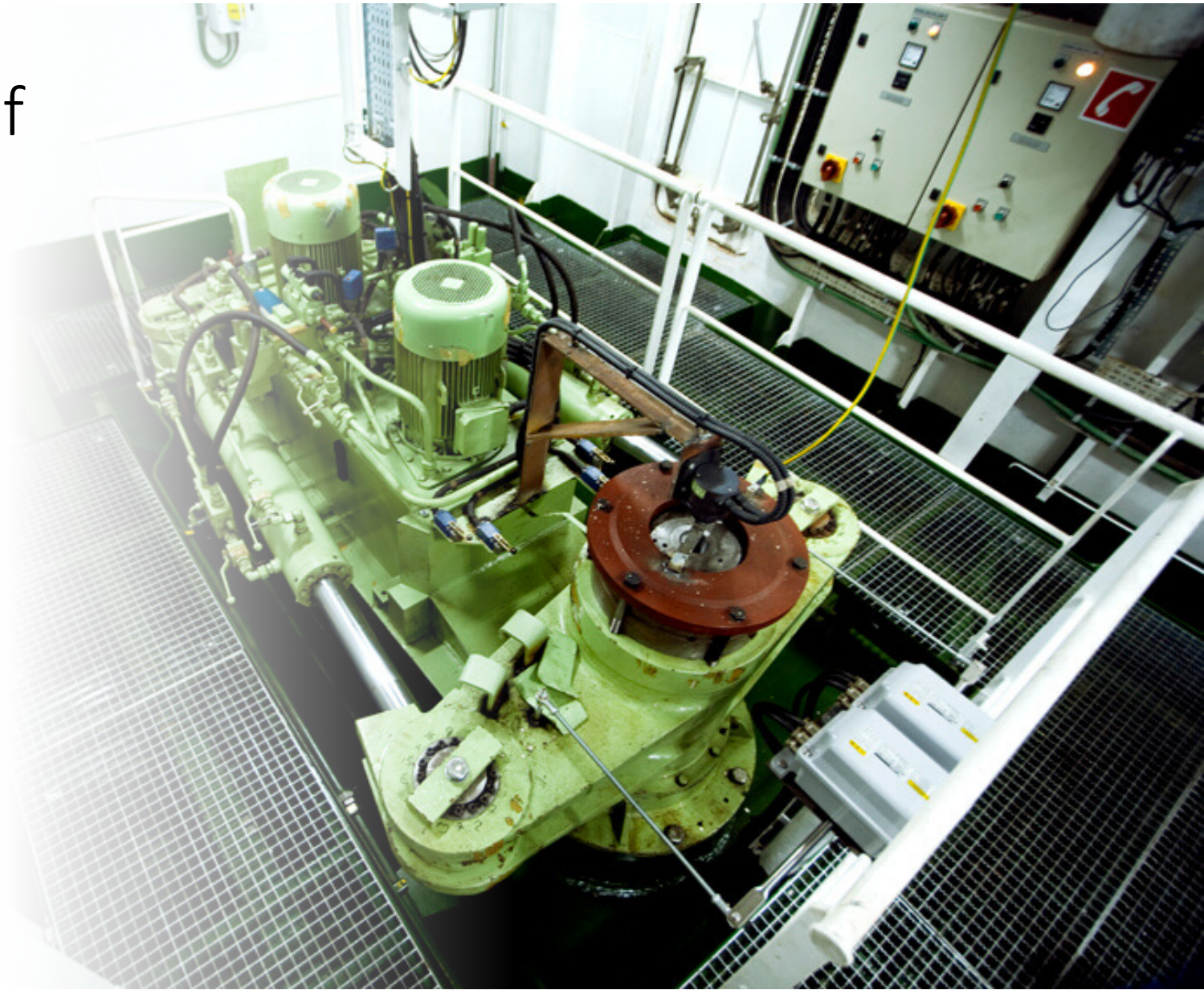
Which types of steering gears exist?

- RAM-TYPE



Which types of steering gears exist?

- 2-CYLINDER TYPE



Which types of steering gears exist?

- VANE-TYPE



What do we support?

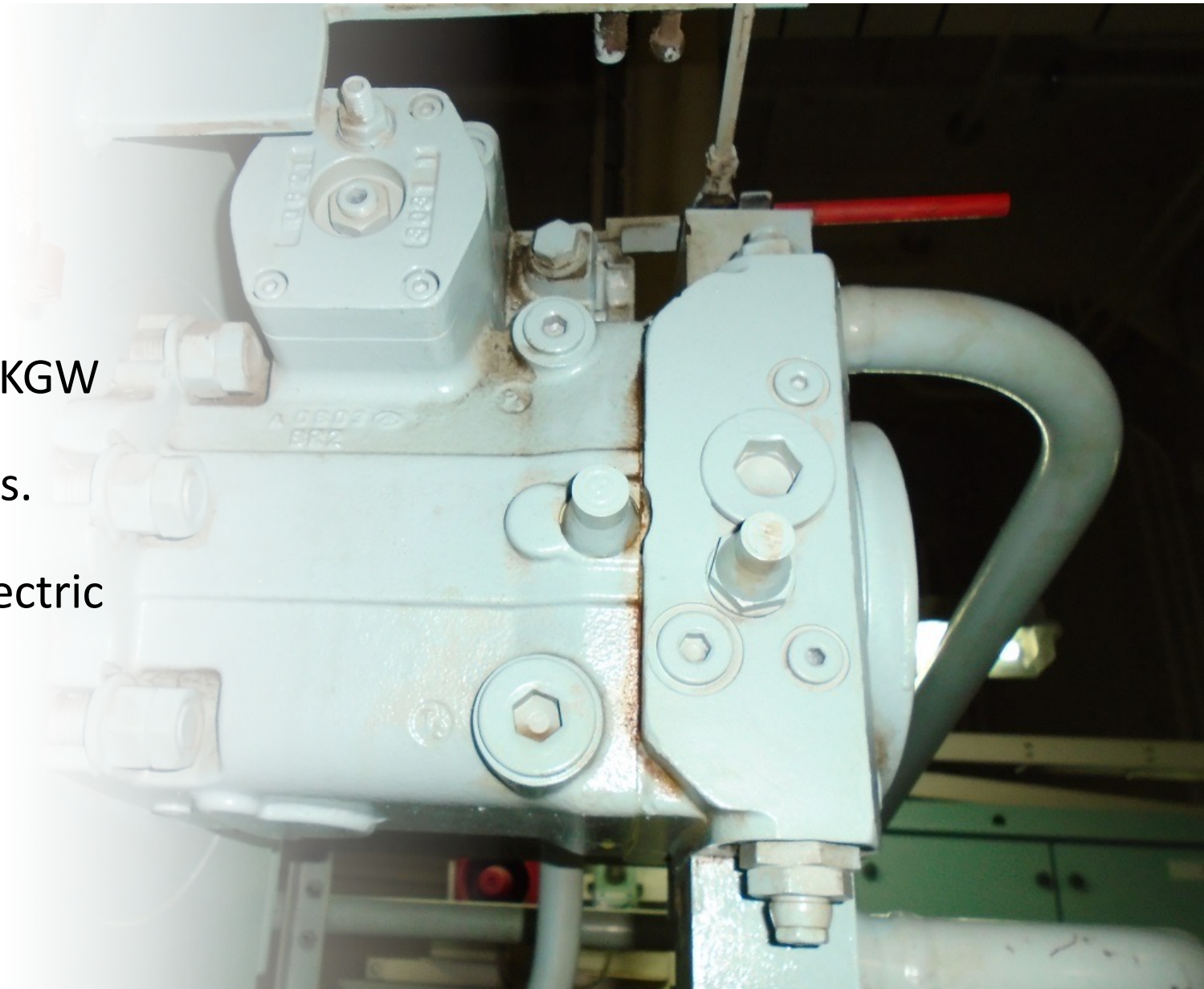
- Brands: HATLAPA, KGW

→ 6-digit article-nos.

→ Hydraulic and electric

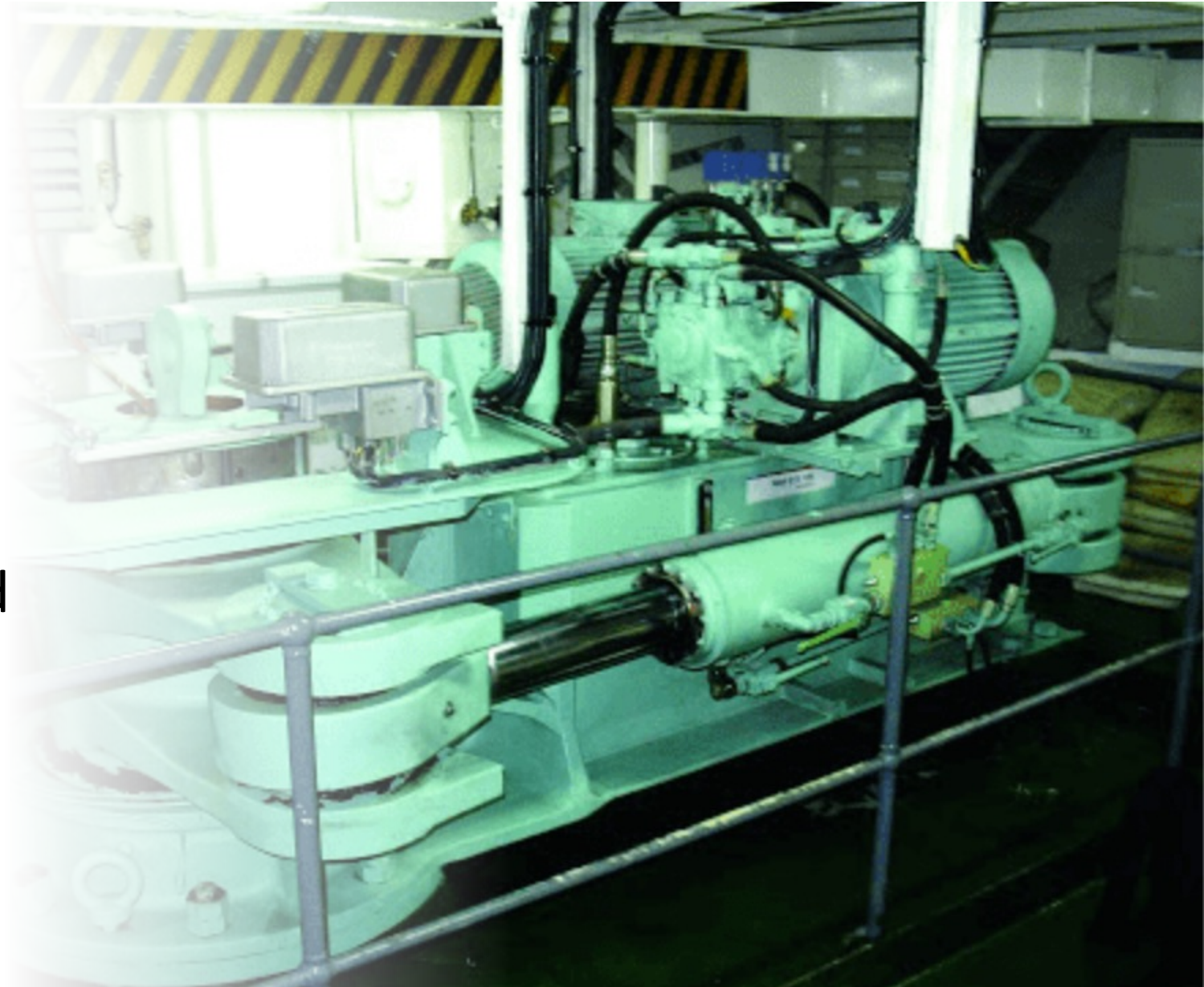
- OTHER BRANDS

→ Hydraulics



What do we support?

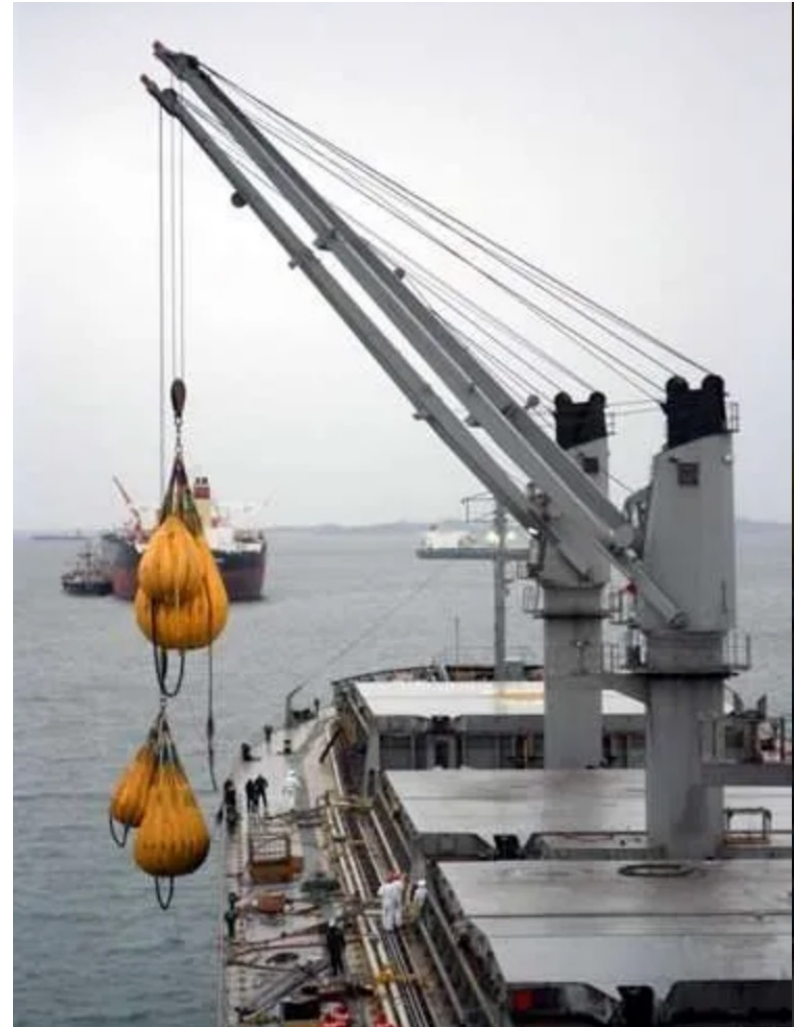
- EX STOCK
HAMBURG and
SHANGHAI
- → Pumps
- → Seal sets



Which crane brands do we support ?

Cranes

- MacGregor
- TTS
- NMF
- Lüzhou
- Masada



Which hatch covers do we support?

- MacGregor
- TTS
- Marcor
- Kvaerner



From where do we supply?

Winches – Hamburg, Shanghai
Steering gears – Hamburg
Cranes – Hamburg, Shanghai
Hatch covers - Shanghai



Where can we provide service?

- Hamburg → North Europe
- Rotterdam → North Europe
- Shanghai
- Busan → East Asia
- Dubai





Product Info

Winches

Steering gears

Cranes

Hatch covers

March 5th, 2025