



JOME
ENGINEERING L.L.C.



*‘Creating better service
for tomorrow’*



Mission

Providing on-time support to the marine & offshore industry for repairs & supply of machinery spares.

Introduction

JOME Engineering has been set-up in UAE and specializes in the after sales service Industry. We cater to the Marine & Offshore Industry mainly covering the verticals of:

Ship Repair Service's Supply - of complete Machinery & spare parts

With a highly skilled and experienced team of professionals in the Marine Industry we are able to support our clients requirements right from the planning phase of a project, through execution, commissioning & providing after sales support.

We work closely with various manufacturers and support customer's vessels trading in this region with their after sales service requirements and supply of Machinery parts.

Our state - of - the - art workshop which spans over an area of 160,000sq.ft and is equipped with latest machinery which aptly backs Our skilled service team who can provide on-board repair services round the clock to the Marine and Offshore Industry.

JOME supply division works very closely with manufacturers in Korea, Japan & Europe to assist ship owner with their requirements for machinery spare parts.



Available on Call 24/7



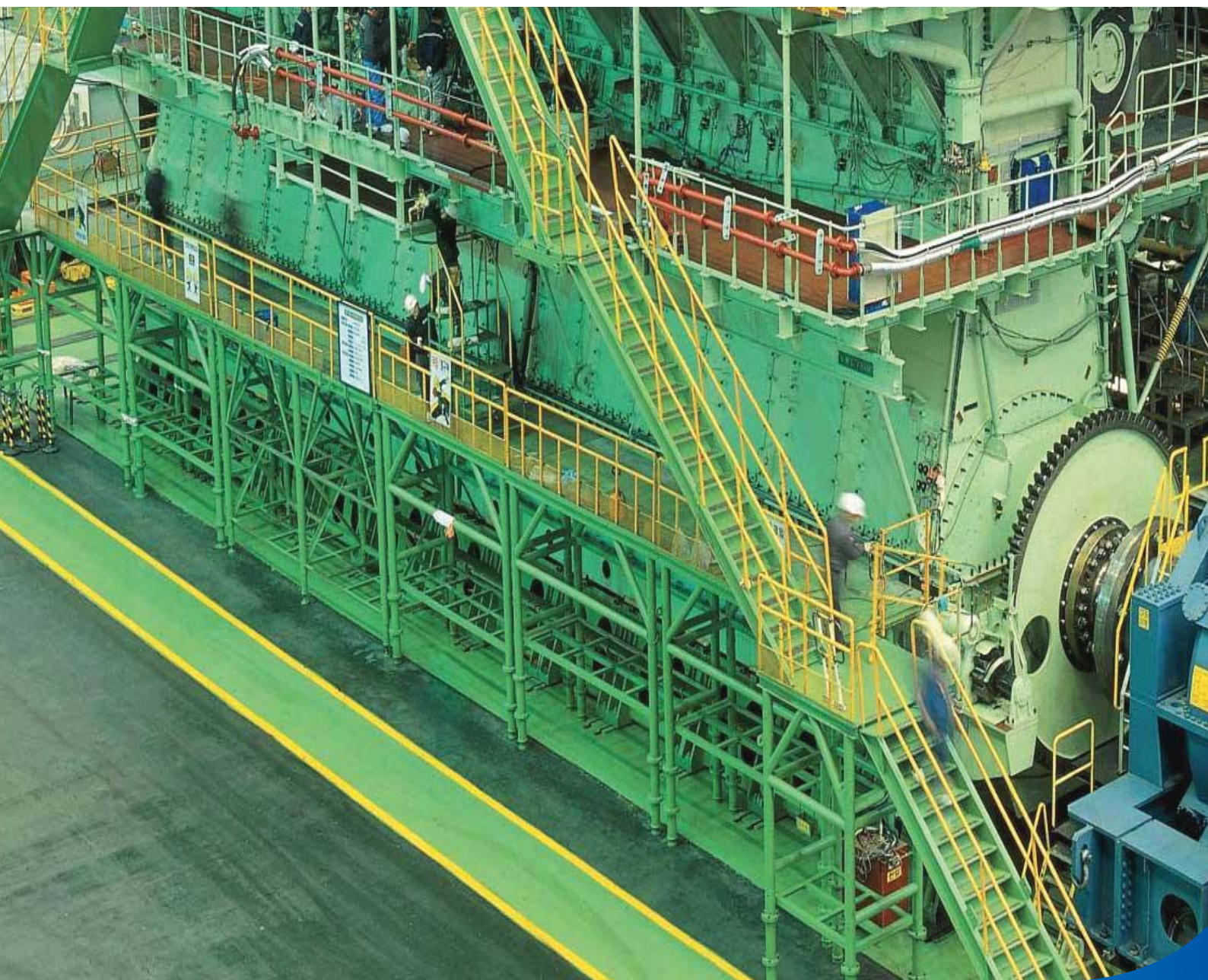
Business Activities:

Supply:

- Supply of complete machinery
- Supply of Main & Auxillary Engine parts
- Supply of Marine Equipment & spares

Service:

- Overhaul of Engine (M/E, A/E & Auxillary machinery)
- Overhaul of M/E components
- Voyage & Afloat Repairs
- Wear & tear repairs for deck & engine room



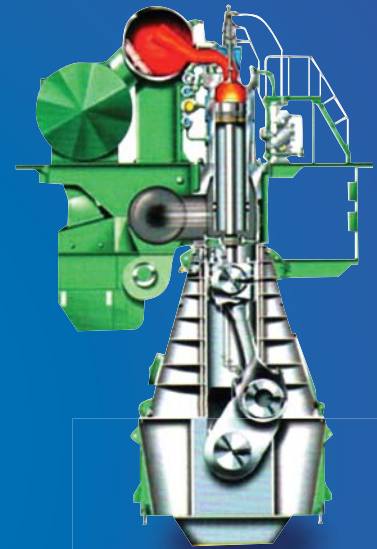


Parts supply of Main / Aux Engines

Main Engine (2-Stroke, Low speed)

JOME Engineering can supply genuine parts of 2-stroke diesel engine.

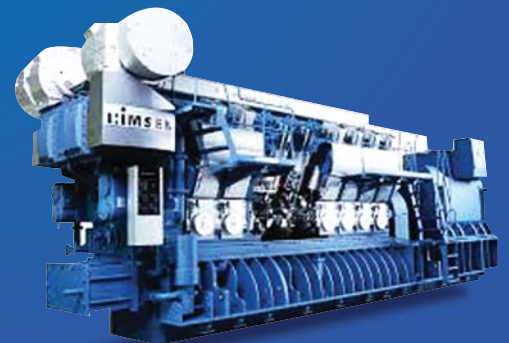
ENGINE			TYPE	
MAIN ENGINE	HYUNDAI MAN B&W	L-K90MC L-K80MC L-K70MC L-K60MC L-K50MC L-K42MC L-K35MC	K-98MC K-98MC-C K-90MC-C K-80MC-C K-70MC-C K-60MC-C K-50MC-C K-46MC-C	K108ME-C K98ME / ME-C S90ME - C K-90ME / ME-G1 K90ME-C S80ME / K80ME-C S70ME-C/ME-G1 L70ME-C S65ME-C / ME-G1 S60ME-C / ME-G1 L60ME-C S50ME-C
	HYUNDAI WARTSILA	RT-FLEX 96C, RTA96C RTA84C RT-FLEX 84T-D, RTA84T-D RTA72U-B RT-FLEX68-B, RTA68-B	RTA62U-B RT-FLEX60C RT-FLEX58T-B, RTA58T-B RTA52U RT-FLEX50, RTA50 RTA48T-B	



D/Gen Engine & Other Purpose Engine (4 Stroke , Medium Speed)

HHI - EMD has developed its own specially designed HiMSEN engine incorporating its valuable experience and technical know-how acquired in manufacturing diesel engines for over two decades.

D/Gen Engine (Medium Speed)		
ENGINE	FOR USE	TYPE
HYUNDAI HIMSEN	MARINE & OFFSHORE	H 17 / 28 (E) H 21 / 32 H 25 / 33 H 32 / 40 (V)
	MARINE PROPULSION	H 21 / 32 P H 25 / 33 P H 32 / 40 P
	STATIONARY	H 17 / 28 (G) H 17 / 28 H 21 / 32 (V) H 25 / 33 (V) H 32 / 40 (V.G.V)
HYUNDAI HOLEBY MAN B&W	MARINE	L 32 / 40 L 27 / 38 L 16 / 24 L.E.V 23 / 32 H.A.K L.E.V 23 / 30 H.A.K





Parts supply of marine equipment and machinery

JOME supplies genuine parts for marine equipment & machinery produced and supplied by manufacturers in Korea, Japan, China and Europe.

On request we can provide good quality OEM parts.

Machinery Parts:

<i>Turbo Charger</i>	<i>Pumps</i>	<i>Incinerators</i>
<i>Compressor</i>	<i>Separators</i>	<i>Cranes</i>
<i>Heat Exchangers</i>	<i>PV Valves</i>	<i>Winches</i>
<i>Motors</i>	<i>Towing Eqp.</i>	<i>Level Indicators</i>
<i>Electrical spares</i>	<i>Steering Gear</i>	<i>Cargo Valves</i>



JOME
works
closely
with

- » Hyundai Engines
- » Kangrim Boilers
- » Donghwa Pneutec compressors
- » Donghwa Entec
- » Dongnam Marine Cranes
- » Shin-Shin Pumps
- » Aegir Marine
- » STX Engines
- » Tank Tech
- » MRC
- » Yoowon Industries
- » DSR ropes
- » Vesconite Bearings



Service and Repair of Engines and Marine Equipments

Services:

- Planning & Execution of Main Engine & Auxiliary Engine overhauls.
- Overhaul of bow thrusters
- Stern Tube Seals (Bonding)



- Overhaul of Turbochargers
- Overhaul & workshop repairs for auxiliary machinery like Cargo Pumps, Compressors etc.
- Boiler & Inert Gas Generator (IGG) automation services



- Condenser (re-tubing / cleaning)
- Plate heat exchanger (cleaning & re-gasketing)
- Special Coating services (approved applicator: WENCON)



- Hydraulic machinery repair (pumps, cylinders)
- Overhaul of Cranes & winches
- Provision of riding squad to carry out Auxiliary engine overhaul & other repairs
- Motor re-winding
- Dynamic balancing

Service partner for:

CSSC Marine Service Partner / Kangrim Boilers / Donghwa Pneutec Compressors / Aegir Marine (Stern Tube Seals & Thrusters) / Tank Tech / Vesconite Bearing

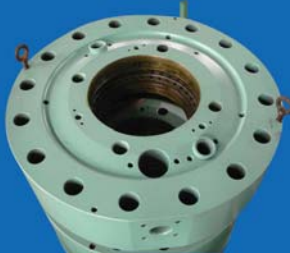
Reconditioning of Main/ Aux Engine Major components



PISTON CROWN



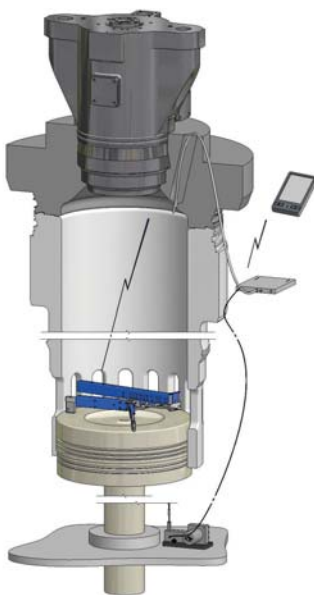
EXHAUST VALVE - SPINDLE & SEAT



CYLINDER COVER



EXHAUST VALVE CAGE



LINER DIAMETER MEASURING INSTRUMENT

LDM

Avoid unplanned off-hire and reduce overhauling costs through continual monitoring of the cylinder condition.

Pre-inspect cylinder condition before a piston overhaul to minimize downtime and cost.

- * Innovative measuring tool for 500- 980 mm bore 2 - stroke cylinder liners
- * Safe , fast and accurate measuring of cylinder liner wear and clover-leafing
- * No need to remove cylinder cover prior to measurement
- * Measuring results available in excel and report format

Fabrication Facility

- » Pre fabrication of structure and pipeline for BWTS & Scrubber system
- » Conversion of containers (20 & 40 feet for offshore)
- » Fabrication of Tanks
- » Strainer basket
- » Pipe spools (CS/SS)
- » SS Bellows
- » Manifold reducers and 'S' bends (SS & CS)
- » Offshore cargo basket

✓ Welders - DNV Approved



Hydraulic Division

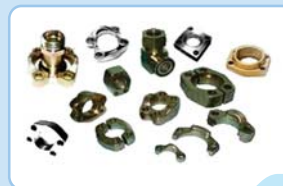
Stainless Steel Hoses, Bellows



Stainless Steel



Composite Hoses



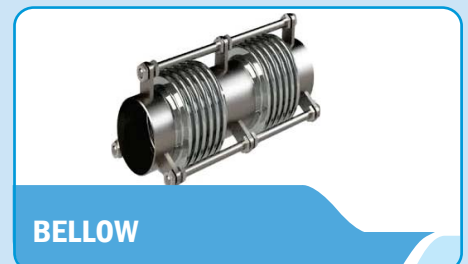
**ULTRA HIGH PRESSURE
JETTING HOSES**



**THERMOPLAST
HOSES**



**METALLIC HOSE &
EXPANSION JOINTS**



BELLOW

Oilfield Supplies



15 K DSA & RISER SPOOL
MATERIAL : AISI 4130
API 16A, H2S SERVICE

BIT BREAKER & ADAPTER
SIZE : 17-1/2"
FOR 37-1/2" MASTER BUSHING



PLUG VALVE
MAKE : NOV

TOP DRIVE SAVER SUB
7-5/8" Reg Pin X HT55 Pin , 7" L
API-7-1 Phosphate coated



DSA & SPOOLS
C/W Studs, Nuts, API 5k - 15k
H2s Service, AISI 4130

FABRICATION OF MANLIFT
C/W Load test certificate



OVERHAULING MUD PUMP



OVERHAULING CEMENTING UNIT



JOME
ENGINEERING L.L.C.

