

# PIONEERING COMFORT AND DURABILITY SINCE 1965



**KING'S**

by Honeywell

*The  
Logical Choice*

**King's Safety Footwear: Tough Outside, Soft Inside.**

A Legacy of Safety Footwear Excellence, Delivering a Heritage of Innovation, Ultra Comfort and Durable Performance.

# ELEVATING FOOTWEAR EXCELLENCE SINCE 1965

For over 55 years, King's has been manufacturing comfortable safety footwear with superior performance quality for rugged, industrial environments, providing protection against a variety of work hazards. Engineered to withstand tough conditions with a durable exterior and designed with a soft interior for lasting comfort throughout the workday, King's has redefined the standards for footwear innovation.

## FOOTWEAR FEATURES

### Sole Features



Puncture Resistant

Pierce-resistant steel midsole reduces the risk of sharp objects penetrating the sole and entering the foot.



Anti-Static

Anti-static soles control the build-up of static electricity on its wearer to reduce the potential hazards associated with static discharge.



ESD

ESD (Electrostatic Discharge) certified footwear provides the necessary grounding to control static. ESD footwear is engineered to prevent sudden static flows between electrically charged objects caused by contact, and thus protect against potential ESD hazards.



Slip Resistant

A slip-resistant sole design ensures superior traction and heightened stability. For additional slip resistance (SR) testing under EN ISO 20345:2022, a ceramic tile is treated with a lubricant of glycerine.



Self-Cleaning Sole

Improved technical outsole optimises fluid evacuation and provides greater bending flexibility.



Mineral Oils Resistant

Enhanced protection to resist contact with acidity and other corrosive mineral substances.



Organic Oils & Fats Resistant

Enhanced protection to resist contact with natural oils and fats.

### Comfort Features



Wide Profile Toe Cap

King's signature wide profile safety toe cap offers maximum comfort for your toes.



Breathable Lining

Highly breathable 3-D lining reduces abrasion when in contact with skin, allowing your feet to remain insulated while drawing excess moisture from the foot.



Comfort Footbed

Enhanced footbed for greater comfort and heel support, with highly breathable perforated channels that dry faster and promote foot freshness.



Impact Absorption

Ergonomic cushioning. Torsion design to provide ultimate comfort that greatly reduces foot, leg and back fatigue when walking on hard surfaces.



Lightweight

Superior lightweight design to provide enhanced comfort for long hours of wear.

### Toecap Feature



Steel or Composite Safety Toe Cap

Offers protection against falling objects or compression. Developed to withstand an impact of 200 joules.

### Special Features



2.0-2.2mm Full Grain Leather

Strong and durable 2.0 - 2.2 mm thick full-grain leather upper with excellent breathability.



Water Resistant Leather

Helps keep feet dry as it repels water on the surface of footwear.



Wear-off Indicator

Wear-off indicator provides an early warning on sole wear and its potential loss of grip to gauge for a replacement.



Toe Bumper

Protects the toe of footwear from scuffing and marking when scraped along rough surfaces.



Heel Guard

Offers stability and impact protection in demanding environments.



Non-Metallic Perforation-Resistant Insert

Reduces the risk of sharp objects penetrating the sole and into the foot.





## KING'S 5-TOE TECHNOLOGY

The King's wide profile toecap provides extra comfort for your forefoot and toes, while providing ample room for movement. This, in turn, allows your toes to splay easily, offering a heightened sense of balance and greater stability.



King's Wide Profile Toecap

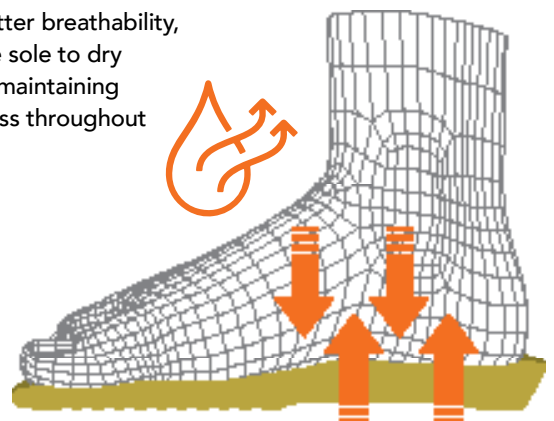


Conventional Toecap

## INSOLE TECHNOLOGY

The King's Comfort Footbed features superior shock absorption technology, offering enhanced cushioning for greater comfort to your foot and maximum support to your heel.

Perforated channels on the sole promote better breathability, enabling the sole to dry quickly and maintaining foot freshness throughout the day.



# KING'S KWD RANGE

## SOLE TECHNOLOGY



Outsole design engineered to complement the natural biomechanics of the walking gait



Tread with deeper grip patterns and enhanced grip variations offers superior traction



Wear-off indicators provide an early warning on sole wear and potential loss of grip

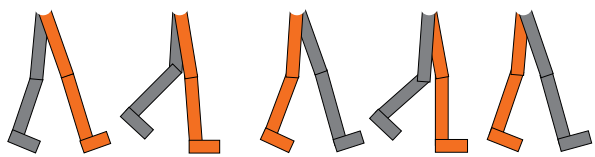


Enhanced outsole surface maximizes ground contact to optimize stability





Embrace unmatched stability and fatigue-free strides with King's expertly designed outsoles that align seamlessly with natural walking biomechanics.



#### 1 CONTACT

Contact of the heel with the ground



#### 2 STABILITY

Transferral of body weight forward



#### 3 PROPULSION

Impulse to the next step

From the controlled initial contact with the ground, supporting the crucial midstance phase of walking to promote stability, and progressing to provide the necessary propulsion for a confident push-off to the next step, the KWD Range ensures fatigue-free strides.

# KING'S KWD RANGE

## SHOCK ABSORPTION TECHNOLOGY



Explore the ultimate in support for diverse foot arch profiles with King's Stability Torsion Zone, effectively preventing both feet pronation and supination, ensuring optimal stability and comfort.



The King's KWD Range has been engineered with exceptional shock absorption technology to ensure elevated comfort, reducing feet fatigue even during the most demanding tasks. Discover the difference in comfort with specialized air cushioning that cradles your feet. Enhanced outsole thickness delivers exceptional cushioning, making every step a breeze.



## A CLOSER LOOK AT EN ISO 20345:2022

The introduction of the EN ISO 20345:2022 standard in 2022 marked an advancement in safety footwear standards. Replacing the EN ISO 20345:2011, this new framework not only modified existing criteria, but also introduced fresh requirements, setting a higher benchmark for safety footwear.

One notable improvement lies in slip resistance evaluation. Slip resistance assessment is now mandatory in

EN ISO 20345:2022, with the SRA, SRB and SRC marks being abolished. The basic slip resistance test mirrors the previous SRA test, which was conducted on a ceramic tile coated with soap solution.

An additional and more stringent test, denoted by "SR" on the certificate, may be conducted, involving the application of a lubricant of glycerine on a ceramic tile. While this test is optional, it is a prerequisite for obtaining the SR marking.

This modification streamlines the certification process by integrating slip resistance as a core criterion and with a higher passing criteria.

Conforming to EN ISO 20345:2022 standards, the King's KWD Range met the basic slip resistance requirements and demonstrated compliance with the additional, more stringent SR testing.



# KING'S KWD RANGE

## DUAL DENSITY POLYURETHANE FOOTWEAR

Padded ankle collar



Highly breathable 3-D lining



Improved visibility in low-light environments with orange hued shoelaces



Reflective strip increases visibility in low-light environments

Gusseted soft leather shoe tongue minimizes water and debris penetration into shoes

Non-woven vamp lining

Robust and breathable 2 - 2.2mm full-grain leather upper

Steel toe cap conforming to EN ISO 20345:2022

Reinforced stitching



Specializing air cushioning for exceptional shock absorption



Protective bumper at the back of shoe reduces damage caused by abrasion on rough surfaces.



Dynamic Stability Torsion Zone supports diverse foot arch profiles

King's Comfort Footbed enhances natural airflow



Enhanced toe bumper for added shoe front protection



Durable leather upper and sole bonding

Enhanced outsole thickness for exceptional cushioning and comfort

**SR** compliance for improved slip resistance with EN ISO 20345:2022



2.0-2.2mm Full Grain Leather



Puncture Resistant



Anti-Static



Slip Resistant



Self-Cleaning Sole



Mineral Oils Resistant



Organic Oils & Fats Resistant



Steel Safety Toecap



Wide Profile Toecap



Breathable Lining



Comfort Footbed



Impact Absorption



Lightweight



Wear-off Indicator



Toe Bumper



Heel Guard

# KING'S KWD RANGE

## KWS200

### Low-cut Lace Safety Shoe



Size  
UK 3-13 | US 4-14 |  
EU 36-48

Colour:  
**Black**



- Gusseted tongue provides added comfort and minimises water and debris penetration into the shoes.
- Padded ankle collar provides superior ankle comfort, support, and chafing prevention.
- Recommended for: Construction, Mining, Manufacturing, General Industries, Utilities, Transportation, Logistics.
- Available without steel midsole in style KWS200X.

## KWD207

### Slip-on Safety Shoe



Size  
UK 3-13 | US 4-14 |  
EU 36-48

Colour:  
**Black**



- Low-cut slip-on and elastic gussets for easy donning and doffing.
- Padded ankle collar provides superior ankle comfort, support, and chafing prevention..
- Recommended for: Mining, Manufacturing, General Industries, Utilities, Transportation, Logistics.
- Available without steel midsole in style KWD207X.

## KWD301

### Mid-cut Lace Safety Boot



Size  
UK 3-13 | US 4-14 |  
EU 36-48

Colour:  
**Black** **Brown**



- Gusseted tongue provides added comfort and minimises water and debris penetration into the shoes.
- Padded ankle collar provides superior ankle comfort, support, and chafing prevention.
- Recommended for: Construction, Mining, Manufacturing, Light Industries, Utilities, Transportation, Logistics.
- Available without steel midsole in style KWD301X (Black) and KWD301KX (Brown).

## KWD106

### Chelsea Safety Boot



Size  
UK 3-13 | US 4-14 |  
EU 36-48

Colour:  
**Black**



- Elastic-sided boot with back pull-up strap for easy donning and doffing.
- Padded ankle collar provides superior ankle comfort, support, and chafing prevention.
- Recommended for: Mining, Manufacturing, General Industries, Utilities, Transportation, Logistics.
- Available without steel midsole in style KWD106X.

## KWD206

### Zipper Safety Boot



Size  
UK 3-13 | US 4-14 |  
EU 36-48

Colour:  
**Black**



- Convenient, quick release side zip for easy donning and doffing.
- Padded ankle collar provides superior ankle comfort, support, and chafing prevention.
- Recommended for: Construction, Mining, Manufacturing, Heavy and General Industries, Utilities, Oil and Gas.
- Available without steel midsole in style KWD206X.

## KWD205

### Rigger Safety Boot



Size  
UK 3-13 | US 4-14 |  
EU 36-48

Colour:  
**Black** **Brown**



- Side pull-up straps for easy donning and doffing even when wearing gloves.
- Recommended for: Construction, Mining, Manufacturing, Heavy and Light Industries, Utilities, Oil and Gas.
- Available without steel midsole in style KWD205X (Black) and KWD205CX (Brown).



# MODELS AND SPECIFICATIONS

LOW-CUT LACE SAFETY SHOE					
MODEL #	STEEL MIDSOLE	CATEGORY	STANDARD	COLOR	SOLE
KWS200	Yes	S1P	SRC (EN ISO 20345:2011) SR (EN ISO 20345:2022)	Black	Dual Density PU
KWS200X	No	S1P	SRC (EN ISO 20345:2011) SR (EN ISO 20345:2022)	Black	Dual Density PU
SLIP-ON SAFETY SHOE					
MODEL #	STEEL MIDSOLE	CATEGORY	STANDARD	COLOR	SOLE
KWD207	Yes	S1P	SRC (EN ISO 20345:2011) SR (EN ISO 20345:2022)	Black	Dual Density PU
KWD207X	No	S1P	SRC (EN ISO 20345:2011) SR (EN ISO 20345:2022)	Black	Dual Density PU
MID-CUT LACE SAFETY SHOE					
MODEL #	STEEL MIDSOLE	CATEGORY	STANDARD	COLOR	SOLE
KWD301	Yes	S1P	SRC (EN ISO 20345:2011) SR (EN ISO 20345:2022)	Black	Dual Density PU
KWD301X	No	S1P	SRC (EN ISO 20345:2011) SR (EN ISO 20345:2022)	Black	Dual Density PU
KWD301K	Yes	S1P	SRC (EN ISO 20345:2011) SR (EN ISO 20345:2022)	Brown	Dual Density PU
KWD301KX	No	S1P	SRC (EN ISO 20345:2011) SR (EN ISO 20345:2022)	Brown	Dual Density PU
ELASTIC SIDED SAFETY BOOT					
MODEL #	STEEL MIDSOLE	CATEGORY	STANDARD	COLOR	SOLE
KWD106	Yes	S1P	SRC (EN ISO 20345:2011) SR (EN ISO 20345:2022)	Black	Dual Density PU
KWD106X	No	S1P	SRC (EN ISO 20345:2011) SR (EN ISO 20345:2022)	Black	Dual Density PU
ZIPPER SAFETY BOOT					
MODEL #	STEEL MIDSOLE	CATEGORY	STANDARD	COLOR	SOLE
KWD206	Yes	S1P	SRC (EN ISO 20345:2011) SR (EN ISO 20345:2022)	Black	Dual Density PU
KWD206X	No	S1P	SRC (EN ISO 20345:2011) SR (EN ISO 20345:2022)	Black	Dual Density PU
RIGGER SAFETY BOOT					
MODEL #	STEEL MIDSOLE	CATEGORY	STANDARD	COLOR	SOLE
KWD205	Yes	S1P	SRC (EN ISO 20345:2011) SR (EN ISO 20345:2022)	Black	Dual Density PU
KWD205X	No	S1P	SRC (EN ISO 20345:2011) SR (EN ISO 20345:2022)	Black	Dual Density PU
KWD205C	Yes	S1P	SRC (EN ISO 20345:2011) SR (EN ISO 20345:2022)	Brown	Dual Density PU
KWD205CX	No	S1P	SRC (EN ISO 20345:2011) SR (EN ISO 20345:2022)	Brown	Dual Density PU

# HONEYWELL 95 SERIES

## 9531 Low Cut Laced Shoe

| Durable. Modern. Comfortable.

### FEATURES AND BENEFITS

The Honeywell 95 Series offers a comfortable fit and value in a professional safety shoe. Available in all standard sizes, the 9531 Low Cut Laced Shoe provides long-term durability and ensures adequate protection for a variety of industrial environments. It features a lightweight and anti-slip PU sole that provides a good grip on various work surfaces.

- Resistant to oils, acids and alkalis
- Impact resistant steel toecap
- Puncture resistant steel midsole insert
- Lightweight, slip resistant, dual density polyurethane (PU) sole
- Provides impact cushioning for the whole foot
- Anti-static
- Water resistant leather

### INDUSTRY APPLICATIONS

- Construction, Building and Maintenance Services, Manufacturing, Food Industries, Transportation and Logistics, Shipbuilding Industry, Telecoms and Utilities.
- Recommended for indoor/outdoor works. Suitable for medium or light industries.

### STORAGE AND CARE

- Footwear should be stored in their original packaging. Keep in an area that is not subject to rapid changes in temperature or humidity levels.

### CARE INSTRUCTIONS

- Store shoes in a cool, dry and well-ventilated area after use.
- Remove excess dust or dirt with a brush.
- Remove any marks using a damp cloth and soap if necessary. Polish any grain or pigmented leathers using a commercially available shoe care product.

### ORDERING INFORMATION

SKU	PRODUCT DESCRIPTION	SIZE
9531-XX-XX	Leather Low Cut Laced Shoe	EU 36-48 / UK 3-13

To specify size, replace 'XX-XX': 9531-(EU size)-(UK size)

#### For more information

[www.sps.honeywell.com](http://www.sps.honeywell.com)

#### Honeywell Personal Protective Equipment

##### Malaysia (Asia Pacific Headquarters)

Level 25, UOA Corporate Tower, Lobby B,  
Avenue 10, The Vertical, Bangsar South City,  
59200 Kuala Lumpur, Malaysia.

Phone: +603-2777 3948 / 3950

Email: [hsp.asean@Honeywell.com](mailto:hsp.asean@Honeywell.com)

95 Series\_9531\_05/2022  
© 2022 Honeywell International Inc.



### TECHNICAL SPECIFICATIONS & STANDARDS

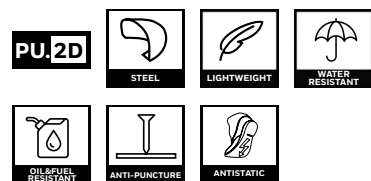
**Standard:** CE EN 20345:2011 / S3 SRC

**Midsole:** Anti-puncture / steel midsole insert

**Toe Cap:** 200 J - Impact resistant carbon steel toe cap

**Footbed:** Comfort EVA for the entire foot, ergonomic, anti-static

**Outsole:** Polyurethane (PU) outsole with dual density construction, extra lightweight, high slip-resistance



THE  
FUTURE  
IS  
WHAT  
WE  
MAKE IT

**Honeywell**

# HONEYWELL 95 SERIES

## 9535 Ankle Laced Boot

**I Durable. Modern. Comfortable.**

### FEATURES AND BENEFITS

The Honeywell 95 Series offers a comfortable fit and value in a professional safety shoe. Available in all standard sizes, the 9535 Ankle Laced Boot provides long-term durability and ensures adequate protection for a variety of industrial environments. It features a lightweight and anti-slip PU sole that provides a good grip on various work surfaces.

- Resistant to oils, acids and alkalis
- Impact resistant steel toecap
- Puncture resistant steel midsole insert
- Lightweight, slip resistant, dual density polyurethane (PU) sole
- Provides impact cushioning for the whole foot
- Anti-static
- Water resistant leather

### INDUSTRY APPLICATIONS

- Construction, Building and Maintenance Services, Manufacturing, Food Industries, Transportation and Logistics, Shipbuilding Industry, Telecoms and Utilities.
- Recommended for indoor/outdoor works. Suitable for medium or light industries.

### STORAGE AND CARE

- Footwear should be stored in their original packaging. Keep in an area that is not subject to rapid changes in temperature or humidity levels.

### CARE INSTRUCTIONS

- Store shoes in a cool, dry and well-ventilated area after use.
- Remove excess dust or dirt with a brush.
- Remove any marks using a damp cloth and soap if necessary. Polish any grain or pigmented leathers using a commercially available shoe care product.

### ORDERING INFORMATION

SKU	PRODUCT DESCRIPTION	SIZE
9535-XX-XX	Leather Ankle Laced Boot	EU 36-48 / UK 3-13

To specify size, replace 'XX-XX': 9535-(EU size)-(UK size)

#### For more information

[www.sps.honeywell.com](http://www.sps.honeywell.com)

#### Honeywell Personal Protective Equipment

##### Malaysia (Asia Pacific Headquarters)

Level 25, UOA Corporate Tower, Lobby B,  
Avenue 10, The Vertical, Bangsar South City,  
59200 Kuala Lumpur, Malaysia.

Phone: +603-2777 3948 / 3950

Email: [hsp.asean@Honeywell.com](mailto:hsp.asean@Honeywell.com)

95 Series\_9535\_05/2022  
© 2022 Honeywell International Inc.



### TECHNICAL SPECIFICATIONS & STANDARDS

**Standard:** CE EN 20345:2011 / S3 SRC

**Midsole:** Anti-puncture / steel midsole insert

**Toe Cap:** 200 J - Impact resistant carbon steel toe cap

**Footbed:** Comfort EVA for the entire foot, ergonomic, anti-static

**Outsole:** Polyurethane (PU) outsole with dual density construction, extra lightweight, high slip-resistance



THE  
FUTURE  
IS  
WHAT  
WE  
MAKE IT

**Honeywell**



# PVC SAFETY BOOTS/ WORK BOOTS



**Safe Waterproof  
Performance  
In The Wet**



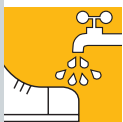
**KING'S**  
by Honeywell



Oil Resistant



With Toe Cap



Water Resistant



With Midsole



Anti-static



Shock Absorption



Anti-slip

## NON-SAFETY

355 -385 mm

Size: 5 - 12



**KV30YZ**

Yellow-Black



**KV30Z**

Black-Yellow

## SAFETY

356 -410 mm

Size: 5 - 12

### SAFETY TOE CAP

KV20YX/ KV20X

Comply to:

**CE** 20345 S4

### SAFETY TOE CAP/ MID SOLE

KV20Y/ KV20

Comply to:

**CE** 20345 S5



**KV20YX/ KV20Y**

Yellow-Black



**KV20X/ KV20**

Black-Yellow

Distributor

**ANSAC**

**ANSAC TECHNOLOGY (S) PTE LTD**

35, Marsiling Industrial Estate Road 3,  
#02-01 Singapore 739257

(65) 6368 0225 (65) 6368 8023

sales@ansac-tech.com.sg ansac-tech.com.sg

VER0712

### SHOE SIZE SCALE COMPARISON

UK	5	6	7	8	9	10	11	12
French	38	39/40	41	42	43	44	45	46

### For more information

www.sps.honeywell.com

### Honeywell Personal Protective Equipment

Email: hsp.asean@Honeywell.com

Malaysia: +603-2777 3948 / 3950

Singapore: +65 6714 6800

Indonesia: +62 21 2964 0328

Philippines: +632 730 7300

Thailand: +66 2 693 3099

Vietnam: +84 28 5411 2260



**KING'S**  
by Honeywell





# **SAFETY** **FOOTWEAR** **CATALOGUE**

**Honeywell**





# OTTER PREMIUM WATERTITE

## Designed for Rugged Industrial Environments

Otter Premium Watertite is a popular high-value safety footwear range designed for wearers who face frequent wet conditions during their workday. Their high quality waterproof oily nubuck leather ensures the top water-repelling performance while the new OrthoPX insoles, made of PORON®XRD™, provide incomparable wearer comfort.

### OTTER HIGH-CUT RIGGER BOOT

- Water-resistant nubuck leather high-cut pull up boot
- Pull-on lugs
- Brown color
- TPU/PU sole
- Taibrelle lining
- Non-woven fiber insole board
- Ergonomic PU insole with PORON® XRD™ insert
- Compliant to EN ISO 20345:2011 SRC



REF.	DESCRIPTION	SIZE
OWT805KW	High-cut Rigger Boot	UK 3-13



#### SHOE SIZE SCALE COMPARISON

UK Size	3	4	5	6	7	8	9	10	11	12	13
US Size	4	5	6	7	8	9	10	11	12	13	14
French Size	36	37	38	39/40	41	42	43	44/45	46	47	48



## OTTER LOW-CUT LACED SHOE

- Water-resistant nubuck leather low-cut laced shoe
- Brown color
- TPU/ PU Sole
- Taibrella lining
- Non-woven fibre insole board
- Ergonomic PU insole with PORON® XRD™ insert
- Compliant to EN ISO 20345:2011 SRC



REF.	DESCRIPTION	SIZE
OWT900KW	Low-cut Laced Shoe	UK 3-13



## OTTER SLIP-ON SHOE WITH BUCKLE

- Water-resistant nubuck leather slip-on shoe
- Brown color
- TPU/PU Sole
- Taibrella lining
- Non-woven fibre insole board
- Ergonomic PU insole with PORON® XRD™ insert
- Compliant to EN ISO 20345:2011 SRC



REF.	DESCRIPTION	SIZE
OWT909KW	Slip-on Shoe with Front Buckle	UK 3-13



## OTTER ANKLE LACED BOOT

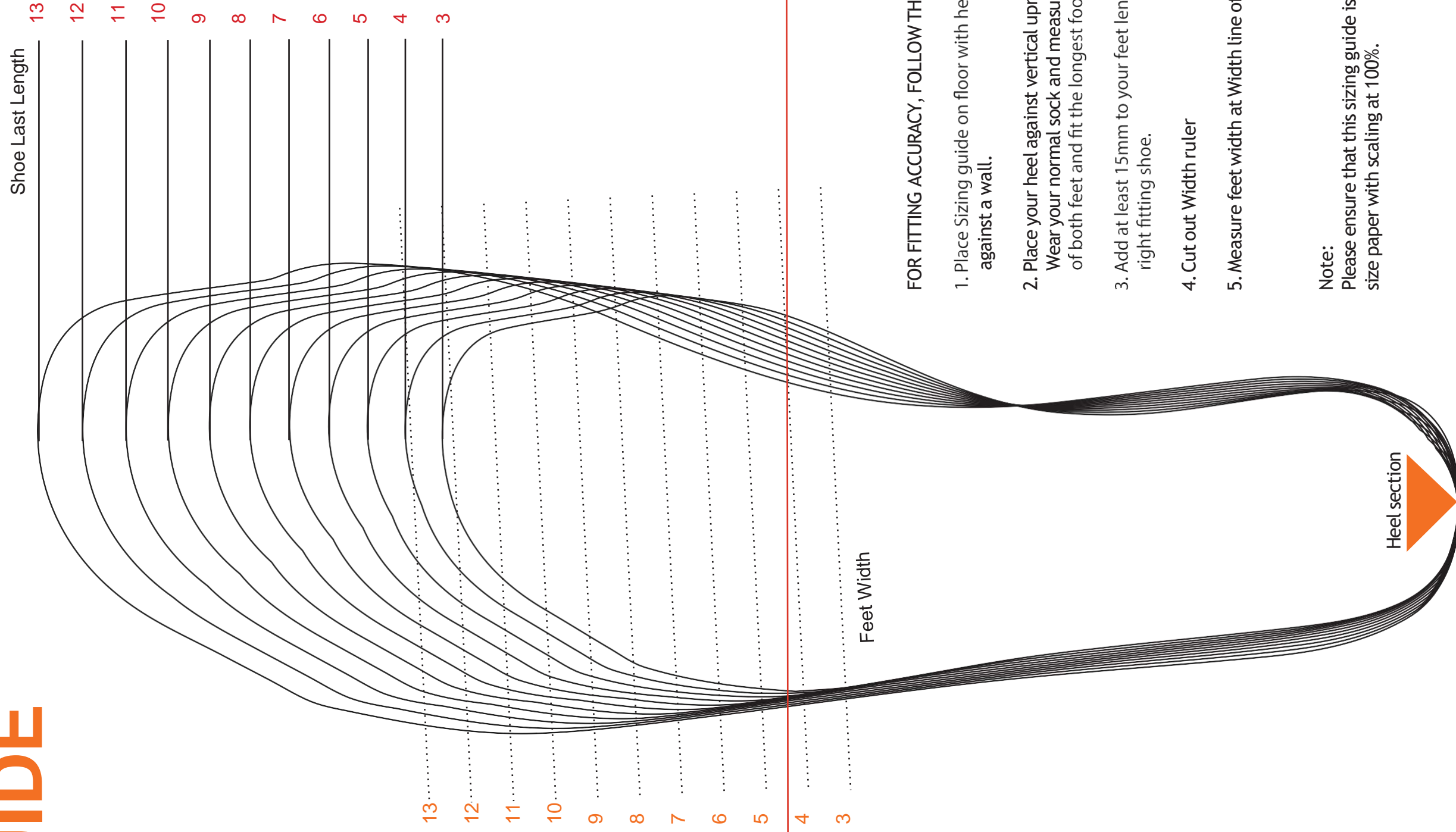
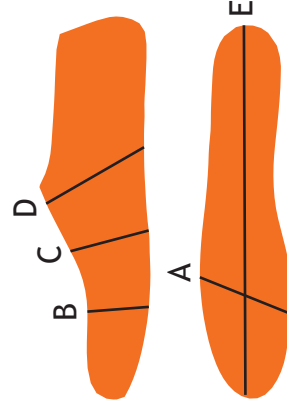
- Water-resistant nubuck leather ankle boot
- Brown color
- TPU/ PU Sole
- Taibrella lining
- Non-woven fibre insole board
- Ergonomic PU insole with PORON® XRD™ insert
- Compliant to EN ISO 20345:2011 SRC



REF.	DESCRIPTION	SIZE
OWT9938KW	Ankle Laced Boot with Side Zipper	UK 3-13
OWT993KW	Ankle Laced Boot	UK 3-13



# SIZING GUIDE



## FOR FITTING ACCURACY, FOLLOW THE STEPS BELOW:

1. Place Sizing guide on floor with heel section against a wall.
2. Place your heel against vertical upright section. Wear your normal sock and measure the length of both feet and fit the longest foot.
3. Add at least 15mm to your foot length to find right fitting shoe.
4. Cut out Width ruler
5. Measure feet width at Width line of appropriate size

### Note:

Please ensure that this sizing guide is printed on A3 size paper with scaling at 100%.

UK Size	3	4	5	6	7	8	9	10	11	12	13
US Size	4	5	6	7	8	9	10	11	12	13	14
EU Size	36	37	38	39/40	41	42	43	44/45	46	47	48
A	84.5	86.5	87.83	89.83	91.83	93.5	95.5	97.6	99.94	102.18	104.18
E	234	243	250	259	266.5	275	284	293	301	310	319



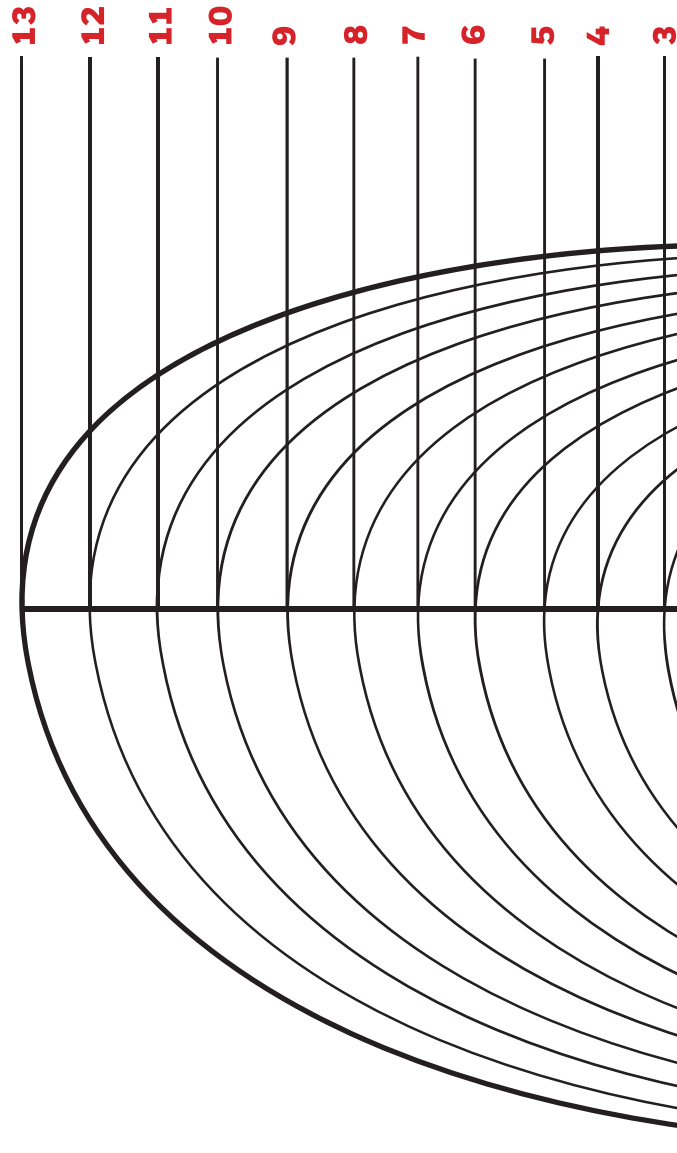
by Honeywell

The Logical Choice

<---- Foldable A3 (become 2 pages of A4) with Harder Material



# SIZING GUIDE



## FOR FITTING ACCURACY, FOLLOW THE STEPS BELOW:

1. Place fitting scale on floor with heel section against a wall.
2. Place your heel against vertical upright section. Wear your normal sock and measure the length of both feet and fit the longest foot.
3. When toe crosses a line select the next larger size.

### Note:

Please ensure that this sizing guide is printed on A3 size paper with scaling at 100%.

PLACE HEEL  
HERE



HONEYWELL SIZING CHART GUIDE		
UK SIZE	FRENCH SIZE	LENGTH ±2MM
3	36	234
4	37	243
5	38	250
6	39/40	259
7	41	266.5
8	42	275
9	43	284
10	44/45	293
11	46	301
12	47	310
13	48	319



**KING'S**

by Honeywell

*The Logical Choice*

**ANSAC**

**ANSAC TECHNOLOGY (S) PTE LTD**

35, Marsiling Industrial Estate Road 3,  
#02-01 Singapore 739257

☎ (65) 6368 0225 🌐 (65) 6368 8023

✉ sales@ansac-tech.com.sg 🌐 ansac-tech.com.sg

King's Footwear Catalogue | 02/24  
©2024 Honeywell International Inc.

