

# Safe and flexible connection for generator couplings

## CT-H with taper lock

### Challenge

For designers of generator sets, two criteria have top priority: finding a solution that meets space constraints while being cost-effective.

The CT-H coupling from Voith supports both criteria. It is virtually failure-free and cost-effective solution by design.

The standard inner part can be arranged in different ways to produce different hub lengths, depending on which length is needed. This avoids expensive custom production.

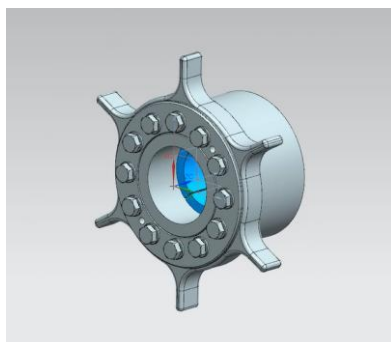
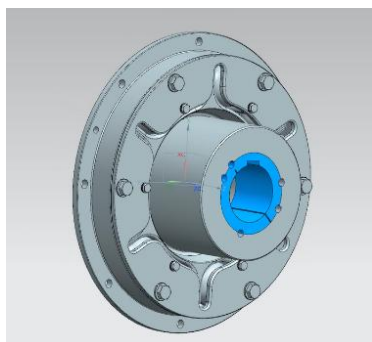
The additional taperlock bushing enables very simple and quick assembly.

### Contact

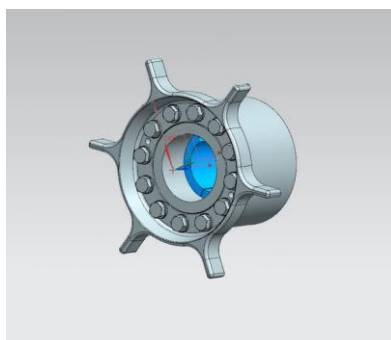
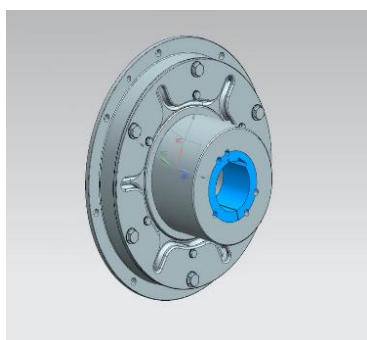
**Andreas Alvern**

MANCRAFT AS  
Espehaugen 60  
NOR – 5258 Blomsterdalen  
Phone +47 98 40 40 46  
[andreas@mancraft.no](mailto:andreas@mancraft.no)

### Standard connection of inner member to hub = standard length



### Reversed inner member connected to hub = extended length



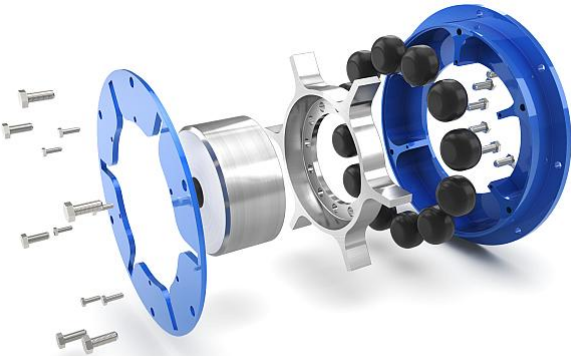
Taper lock bush on the hub of a flexible CT-H coupling

Voith CT couplings

Flexible CT Couplings are especially well suited for industrial uses. This type of coupling is virtually failure-free and is an optimal and cost-effective solution for many applications. Elastomer elements under pressure provide a damping effect.

CT Couplings dampen torsional vibrations and shock loads in the driveline. This increases the operational stability and service life of your equipment or system, which in turn increases the availability and reduces the total cost of ownership.

Explosion view of a CT-H coupling



Example engine – coupling combinations

Engine	Flange size	Rating	Speed	Nominal torque	Maximum torque	Suitable coupling	Taper lock bush	Possible shaft diameter
	SAE J620	kw	rpm	T <sub>KN</sub> (kNm)	T <sub>kmax</sub> (kNm)	Type	size	mm
MAN D2866 E	14	115	1 500	0.732	2.38	CT-H.3000	3525	35 ~ 100
MAN D2866 LE	14	230	1 500	1.464	4.76	CT-H.3000	3525	35 ~ 100
MAN D2866 LXE30	14	280	1 800	1.485	4.83	CT-H.3000	3525	35 ~ 100
MAN D2866 TE	14	176	1 500	1.120	3.64	CT-H.3000	3525	35 ~ 100
MAN D2840 LE301	14	445	1 500	2.820	9.17	CT-H.4500	3525	35 ~ 100