



MANCRAFT AS

MARINE GENSETS 190 – 800 kW

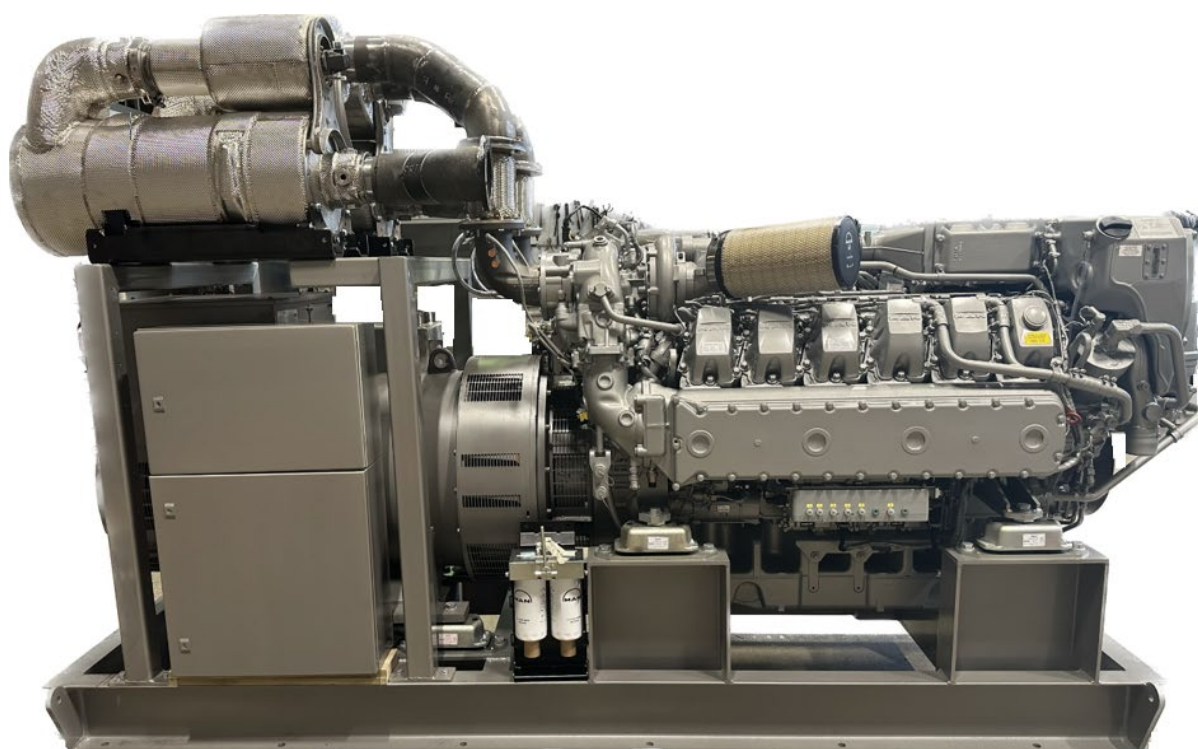
MANCRAFT AS is the importer of MAN marine high speed engines and an experienced supplier of engines and propulsion systems for professional working vessels and fishing vessels around the coast of Norway.

We offer compact built MAN - MARINE GENSETS based on the most reliable equipment in the market:

MAN diesel engine with MAN original equipment, **Leroy Somer** 2-bearing genset, **CENTA** elastic coupling, **MANCRAFT** advanced monitoring, alarm and safety system – all approved by DNV.

ENVIRONMENTAL BENEFITS:

- Available with MAN SCR system for IMO Tier III NOx emission level
- Compatible with HVO biofuel for up to 90 % CO₂ reduction



Engine type	Generator type	Rating	Dimension	Weight
MAN D2862LE327	LSAM 49.3 L9	kWe/kVA	L x W x H	kg
700 kW / 1500 rpm	50 Hz	665 / 831	3250 x 1350 x 2250	5500

TECHNICAL DATA

MAN D2862LE327 – IMO TIER III

CONSTANT SPEED MARINE ENGINE

PERFORMANCE DATA

Rated power (100%)	700	kW
Speed	1500	rpm
Number of cylinders	12	
Bore/stroke	128/157	mm
Displacement	24,24	liter
Rated torque	4456	Nm
Compression ratio [ε]	17,0	:1
Mean effective pressure	23,10	bar

CONSUMPTION DATA (rated speed)

Specific fuel consumption	199	g/kWh
Absolute fuel consumption	166	l/h
Absolute urea consumption	10	l/h

GENSET MAIN DIMENSIONS

