

MANCRAFT AS



MARINE GENSETS 190 – 800 kW

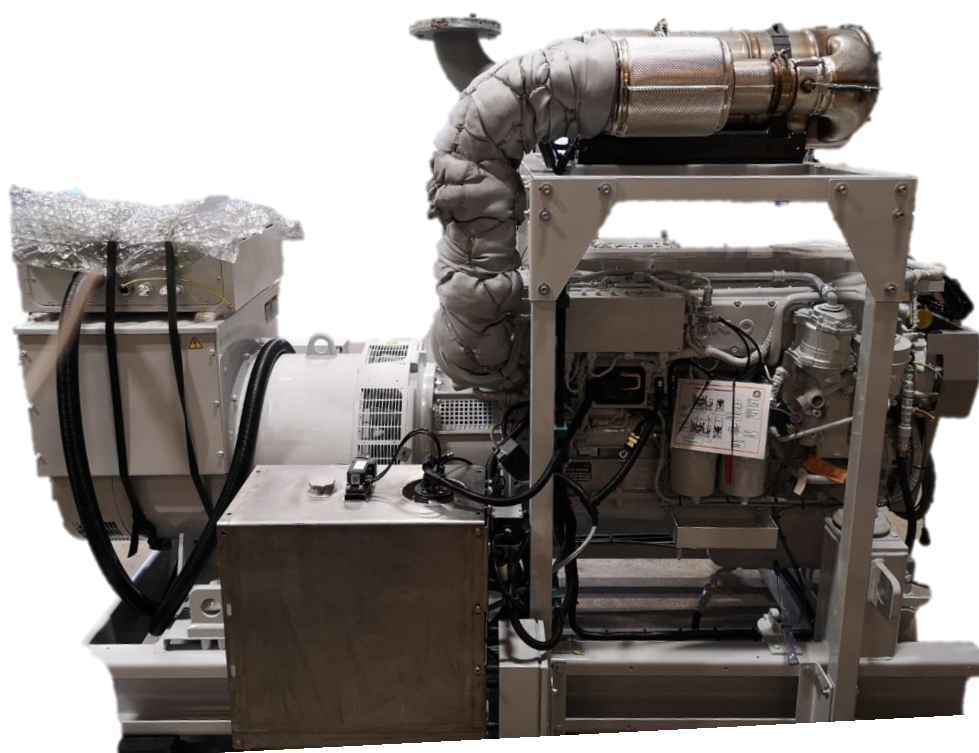
MANCRAFT AS is the importer of MAN marine high speed engines and an experienced supplier of engines and propulsion systems for professional working vessels and fishing vessels around the coast of Norway.

We offer compact built MAN - MARINE GENSETS based on the most reliable equipment in the market:

MAN diesel engine with MAN original equipment, **Leroy Somer** 2-bearing genset, **CENTA** elastic coupling, **MANCRAFT** advanced monitoring, alarm and safety system – all approved by DNV.

ENVIRONMENTAL BENEFITS:

- Available with MAN SCR system for IMO Tier III NOx emission level
- Compatible with HVO biofuel for up to 90 % CO₂ reduction



Engine type	Generator type	Rating	Dimension	Weight
MAN D2676LE327	LSAM 47.2 M7	kWe/kVA	L x W x H	kg
360 kW / 1500 rpm	50 Hz	340 / 425	2810 x 1340 x 2050	3050

TECHNICAL DATA

MAN D2676LE327 – IMO TIER III

CONSTANT SPEED MARINE ENGINE

PERFORMANCE DATA

Rated power (100%)	360	kW	410	kW
Speed	1500	rpm	1800	rpm
Number of cylinders	6		6	
Bore/stroke	126/166	mm	126/166	mm
Displacement	12,42	liter	12,42	liter
Rated torque	2292	Nm	2175	Nm
Compression ratio [ε]	18,0	:1	18,0	:1
Mean effective pressure	23,19	bar	22,01	bar

CONSUMPTION DATA (rated speed)

Specific fuel consumption	195	g/kWh	202	g/kWh
Absolute fuel consumption	84	l/h	99	l/h
Absolute urea consumption	7	l/h	6	l/h

GENSET MAIN DIMENSIONS

