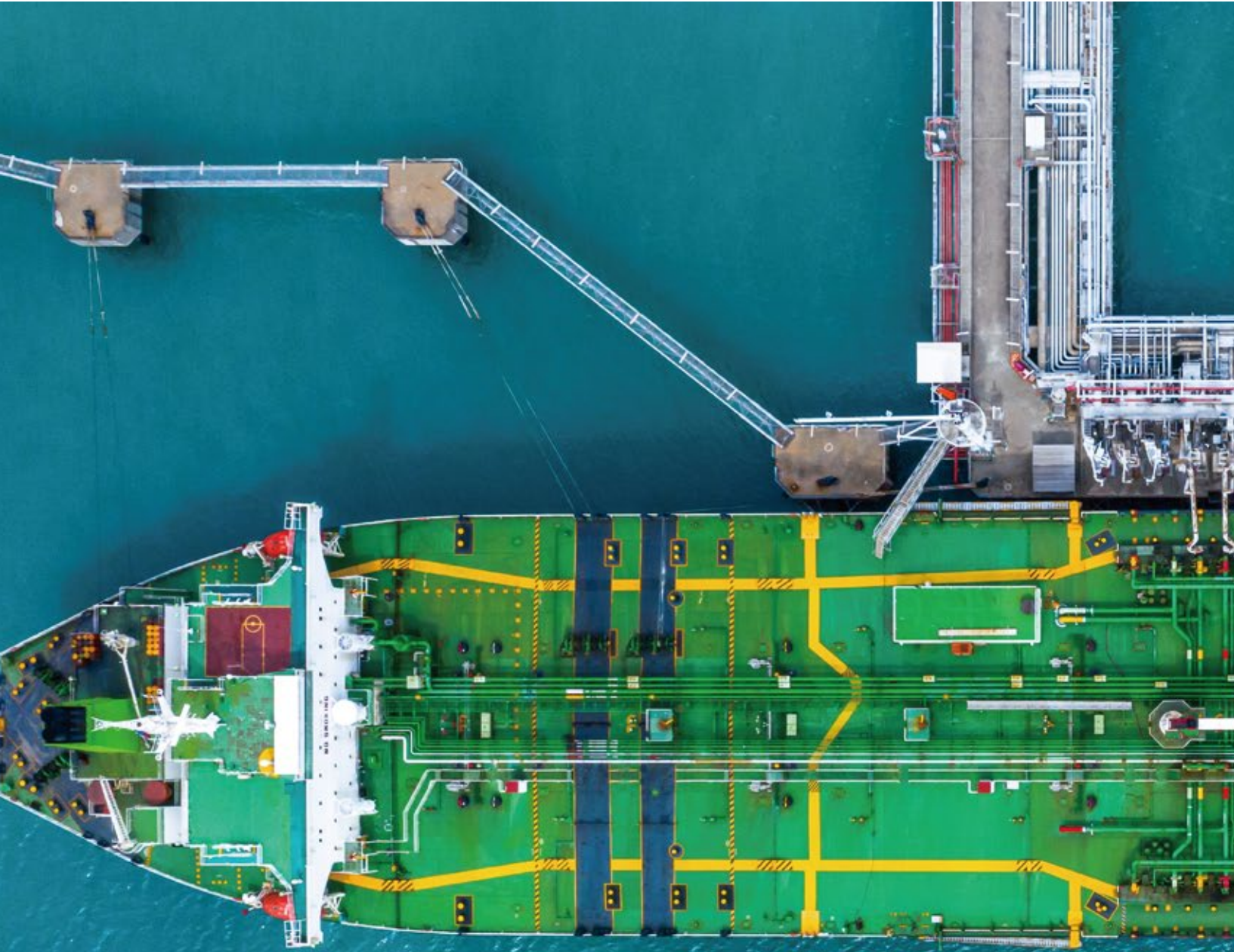




LEADING SHIP SUPPLIER



PROVIDING THE WHOLE RANGE OF SHIP SPARES FOR SHIPS AND OFFSHORES

Limanntech is a group of experts in the field of marine valves and ship management, starting from 2018. With tens of experiences of shipyards and ship management companies, Limanntech has provided a range of ship spares not only marine valves but all the spare parts, satisfying the needs of ship owners, ship managers and ship suppliers.

Addition to supplying ship spares, Limanntech is designated as an exclusive agent for several newbuilding ships and offshores in China and USA, providing with Korean Manufacturers' product. Limanntech has accomplished newbuilding projects tens of ships for providing with Triple-offset butterfly valves and Strainers.

Since 2020, Limanntech has started to develop new model of multiple-offset butterfly valves, used for LNG and ammonia vessels. It has been finally completed to be developed and supplied to several vessels for retrofit projects in Korea. Limanntech will continuously go forward and meet all needs of our clients.

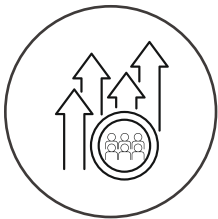
We will continue and produce amazing updates for our customer base.

WHY LIMMANTECH



SPECIFICATIONS REVIEW

Limantech consists of experts with tens-of-years-experiences in shipbuilding industry, reviewing your RFQ and drawings meticulously for all the marine system, which makes it possible its our missupply rate very low.



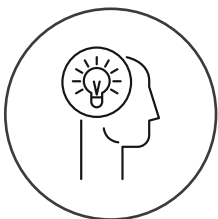
STRONG PARTNERSHIP WITH MANUFACTURES

Purchasing big amount of product from tens of manufacturers in Korea every year and Doing newbuilding business with them, which results in competitive price and strong partnership.



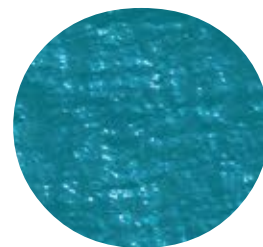
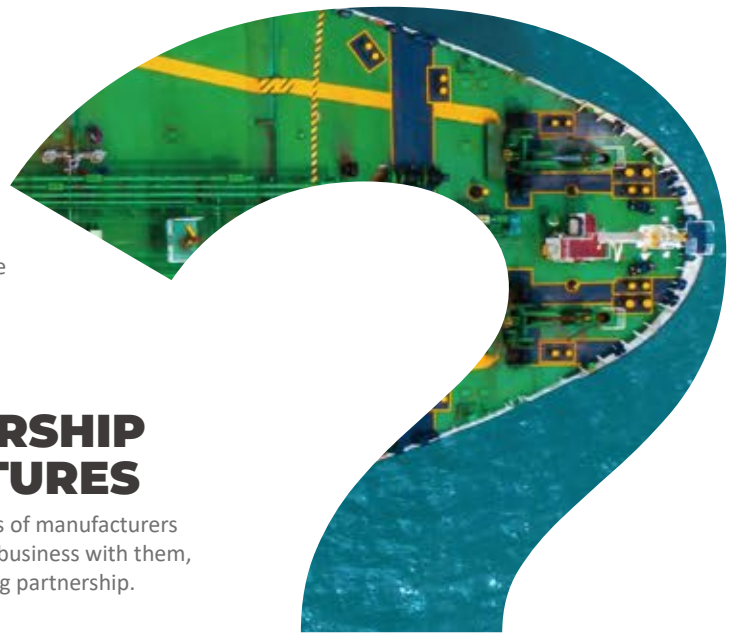
REFERENCE CHECK PROVIDED TO SHIPS

Considering there are errors in RFQ, Limantech checks the supply history when the ship was newly built in a shipyard. All types of valves are checked by Spec. and Reference Check, so the missupply rate is very low.



COMMITTED AND CONTINUOUS RESEARCH AND DEVELOPMENT ON VALVES

Not only providing valves, but also Limantech continues developing new models of valves. In accordance of IMO's rules and regulations, the goal of our R&D projects is focused on valves for LNG, ammonia, ethanol, and LH₂.



VALVE
EXPERTS GROUP



ALL SHIPS BUILT IN KOREA

LIMANNTech CAN PROVIDE SPARES

Limanntech specializes in supplying valves from abundant manufacturers in Korea for marine applications. The majority of vessels built in Korea are equipped with product/system produced by Korean manufacturers.

With Limanntech, there's no need to reach out to multiple suppliers—we provide a one-stop solution for all your spares needs. This unique capability has positioned us as a trusted partner for many companies in Korea and beyond.

FAST QUOTES, RELIABLE LOGISTICS

YOUR TRUSTED SHIP SUPPLY PARTNER

PROMPT QUOTATION RESPONSES

We strive to respond to all quotation requests within 24 hours whenever possible.

EFFICIENT FEEDBACK PROCESS

For items we can quote, we ensure quick responses. If a quotation is not feasible, we promptly notify the client with a clear explanation.

HIGH QUOTATION SUCCESS RATE

Unlike many companies in Korea that often fail to provide quotations, we pride ourselves on being able to quote for most items. We can even handle items other companies may find challenging, often at significantly more competitive prices.

RELIABLE LOGISTICS TEAM

Our dedicated logistics team ensures that all deliveries are made within the agreed lead times, maintaining precision and reliability.

NUMBERS

ABOUT LIMANNTTECH



1,821 **SHIPS**

including Tankers, Bulk Carriers, LNG/LPG Vessels, Container Ships, PCTCs and offshores. have been supplied with valves by Limanntech since 2020.

6,682
ORDERS



have been received from various clients which are mostly ship suppliers over the world.

0.1%
MISSUPPLY RATE



is the figure that Limanntech is recording. Our quotation team is dedicated to review the RFQ and drawings from the ship operator's point of view.

142
CLIENTS



over the world have regularly placed orders to Limanntech and the number of clients is expected to be increased every year.

11
NEWBUILDINGS



in USA, China and Korea has been completed to be provided with valves and other ship equipment by Limanntech

35
YEARS



experiences of Limanntech's diretors in valve and ship mangement industries is a fundamental of Limanntech's competitiveness.

24
HOURS

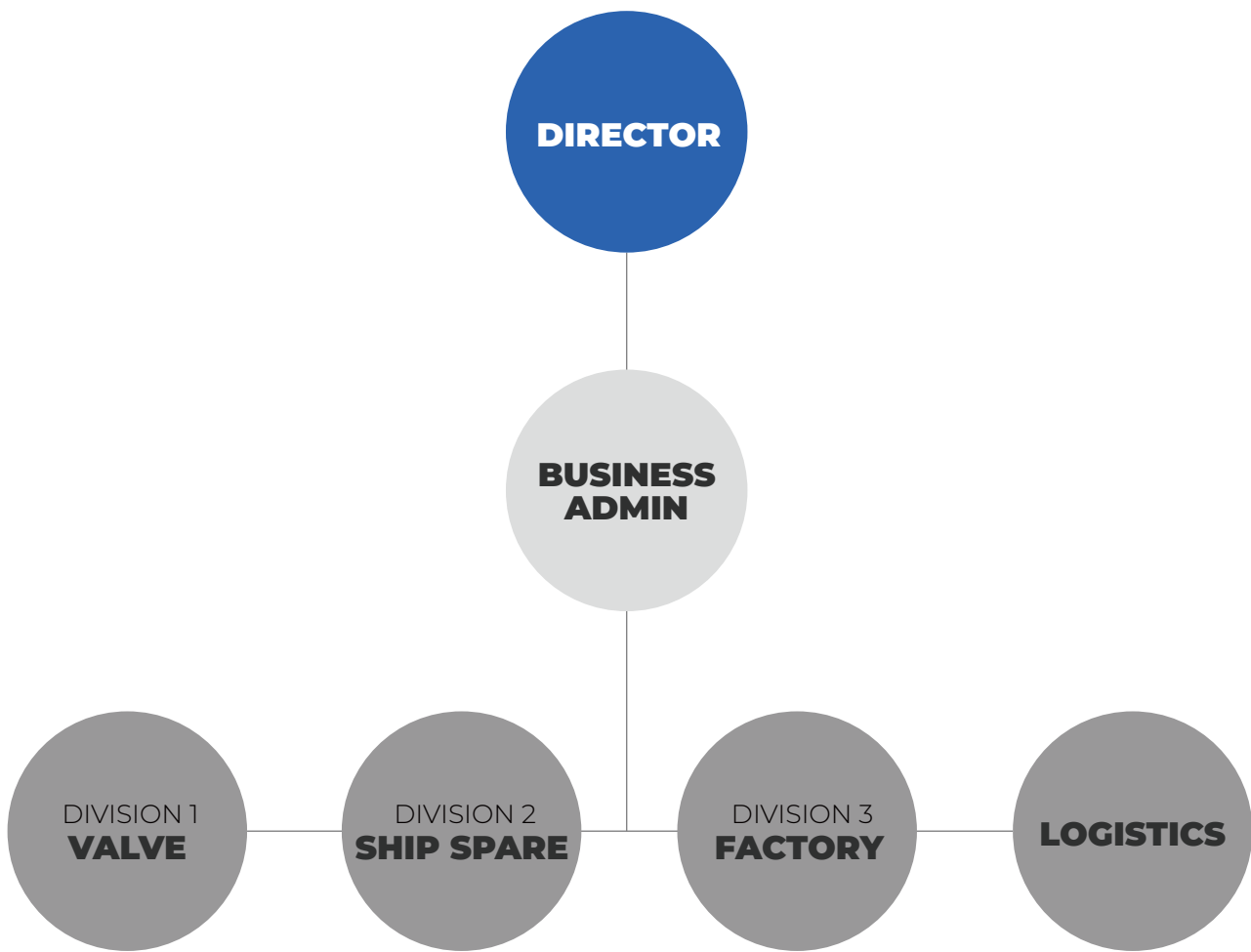


is our policy, which means Limanntech gives you quotation within 24 hours after submitting your RFQ. Quick response and exact quotation are our strengths.

ORGANIZATION

ABOUT LIMANNTTECH

Limanntech operates through four distinct divisions, each specializing in key areas to deliver comprehensive solutions to our clients: This integrated structure enables Limanntech to deliver end-to-end solutions, solidifying our position as a trusted leader in the marine and industrial sectors.



Collaborating with leading valve manufacturers in Korea, China, Japan, and beyond, we supply a full range of valve products, including complete systems and spare parts, tailored to meet our customers’ needs.

Specializing in ship spare parts, we work closely with manufacturers in Korea, China, Japan, and other countries to source and deliver components specific to our customers’ requirements, ensuring seamless support for vessels built globally.

Operating our own valve manufacturing facility, we produce high-quality marine valves that adhere to JIS, DIN, and ANSI standards, ensuring exceptional quality and reliability for the maritime industry.

Our dedicated logistics division manages product pickup, scheduling, and shipping, providing streamlined and efficient delivery services to meet tight timelines and global demands.

BRANDS FOR VALVE

IN KOREA, CHINA AND JAPAN

 ACE VALVE

 KEYSTONE

 SEJIN VALVE

 DKC

 KORVAL

 BY
CONTROLS, INC.

 WOOSUNG FLOWTEC

 HANYANG VALVE

 T&S
TECHNOLOGY & SERVICES

 CEPHAS

 ORIENTAL

 S&S
VALVE

 DK T.M.I

 DK-LOK
Fittings & Valves

 WONKWANG VALVE

 KEYSUNG METAL CO., LTD.

 株式会社 中北製作所
NAKAKITA SEISAKUSHO CO., LTD.

 NEWAY

 大连船用阀门有限公司
DALIAN MARINE VALVE CO., LTD.

 PKvalve

 Mt.H
CONTROL VALVES CO., LTD.

 DEV
DONG EUN VALVE

 KANGRIM

 PLEIGER

 KSB

 Scana
SCANA INDUSTRIER ASA

 SAMKUN 89
SAMKUN CENTURY CO., LTD.


BRANDS FOR SPARE PARTS

VALVE, STRAINER, EXPANSION JOINT	ACE VALVE, KEYSTONE, SEJIN, BY CONTROLS, KORVAL, Mt.H, WOOSUNG FLOWTEC, OKV, WKV, JOKWANG, PARKER, KOS-GEA, ALL KOREAN-MADE VALVE (JIS, DIN, GB, ANSI)
ELECTRICAL, TELECOM	DANFOSS, HYUNDAI HEAVY INDUSTIES, HYUNDAI ELECTRICS, I-TEC, POWER GENEX, HSME, Q-LIGHT, MRC, JRC, HANSHIN, KEM, LUXCO, GMTECHS, EUROSITCH, E-TECH, ZHEJIANG BOZHOU MARINE ELECTRIC, YONGSUNG ELECTRIC, DAEYANG ELECTRIC
CRANE	ORIENTAL, DMC(SANGSANGIN), HAEAN(TECHFLOWER), A-RIM, SPP, TEAKWANG, HOCHANG, TEAKWANG, HOCHANG, MCT
BOILER	KANGRIM, ALLBORG, HYUNDAI, SAACKE, WEISHAUPT(RMS), VOLCANO, HAMWORTHY, KRAL PUMP
DOOR, ACCOMODATION	COSMO, SUNG-MI, BY CONTROLS
GREASE	PULSARLUBE
SAFETY, FIREFIGHTING	NAVUTEC, NK, FINE, FANGZHAN, HAIZHOU
GALLEY, WORKSHOP, etc	SAMJOO ENG, KYUNG NAM DRYER, HODU, JONGHAP, DAEHEUNG, KOREA UV, KUMSUNG, METOS, JEITEK, IL SEUNG, KOKAKO, SEC
PUMP	WOOSUNG VACUUM TECH, EDWARDS, DESMI, AZCUE, ZHENHUA, TAIKO, NANIWA, SHINKO, SHINSHIN, TEIKOKU, HEISHI, BOSCH REXROTH, HAMWORTHY, EATHON, ALLWEILER, SHIMADZU, YURIM PRECISION INDUSTRIAL
N2 BOTTLE	YUTAKA CROWN
AIR COMPRESSOR HEAT EXCHANGER	DONGHWA PNEUTEC, DONGHWA ENTEC, TRANTER, GEA, ALFA-LAVAL, APV, KHPE, LHE, DHP
PURIFIER	SAMGONG, SAMKUN CENTURY, ALFA LAVAL ,WESTFALIA, MITSUBISHI, SHARP, CSSC
DECK MACHINERY	DMC, ORIENTAL, BADA, YOUNGNAM MACHINERY, IMT, SAMGONG, JUNG-A, SHIN MYUNG, A-RIM, A-TECH
BWTS	SAMKUN CENTURY, PANASIA
VENT, FAN	HI-AIR KOREA, HMMCO, KWANG SAN
STERLIZER, WATER TREATMENT	SAMKUN CENTURY, SEWON ENT
O-ZONE SYSTEM	SAMKUN CENTURY, JONGHAP ENTEC
LIGHTING	DAEYANG, WOOSHIN, SUNIL ELECOM, KUKDONG
ECONOMIZER, RELAVANT SYSTEM	KANGRIM, NK, DAE DONG ENTEC, HMMCO, SUNFLANGE, VOLCANO, TAEIL BLOWER, HYUNDAI MARINE MACHINERY
LEVEL SYSTEM	PANASIA, HAML A IMS, HANJU LEVEL
ROPE	HEBEL (FAST DELIVERY, CLASS-APPROVED)

LOCATION

WHERE WE ARE

Strategically Positioned for Swift and Reliable Deliveries

Limnantech is strategically located near Busan New Port and Gimhae Airport, making us ideally positioned for efficient and timely deliveries.



CERTIFICATES

WHAT WE HOLD

ISO 9001



ISO 14001



Limannotech provides a wide range of documentation based on customer requests, including COC, Mill Sheets, and Class Certificates. Additionally, we can submit approval drawings for customer review and proceed only after receiving their approval.

Our commitment to quality and flexibility has earned us the trust and satisfaction of diverse customers worldwide, making Limannotech a preferred partner across industries.

PHOTOGRAPHS OF OUR FACTORY

WAREHOUSE FOR SPARE PARTS



WAREHOUSE FOR SPARE PARTS





**LEADING
SHIP
SUPPLIER**

LIMANNTech

LIMANNTech CO., LTD.

Factory: #D building, 55, Nakdongnamro 533 beon-gil, Gangseo-Gu, Busan, Republic of Korea

Sales Office: #204-206/207, 50, Yutongdanji-1Ro, Gangseo-Gu, Busan, Republic of Korea

Tel +82-51-989-0101 Fax +82-70-4850-8388 eMail sales@limanntech.com

<http://limanntech.com>

©2024 LIMANNTech ALL Rights Reserved



LIMANNTech