

Challenge to the New Technology · Innovative Thinking · Long-Term Reliable Quality



DUKWON
VALVES

1. INTRODUCTION



Since the establishment in 1990, we have constantly exerted technical developing and leading the specialized manufactures of valves.

We manufacture a comprehensive range of valves, including butterfly valves, check valves, gate valves, water seal valves, pneumatic valves, motorized valves, and many other.

We , designed for critical requirements, have proven their reliability and efficiency in a wide range of applications. A variety of materials allows tailored construction and complete adaptability to meet customer's requirements.

With systematic technology in manufacturing we are able to provide high quality, and economical manufacturing.

We are doing our best effort to improve on the service and quality to become one of the leading valve companies in the world.

We thank you for your interest and affection and we will grow to become a more developed company.

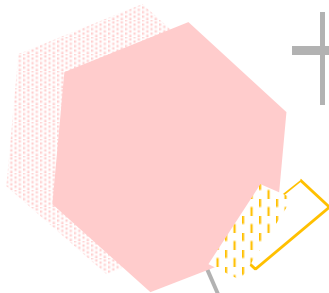
2. HISTORY

**2017 ~
Present**



- 2021 ▪ PT PERTAMINA RDMP (PERSERO, Indonesia), Vendor Registration
- 2019 ▪ JSW Steel Ltd India , Vendor Registration
▪ Saewul No. 3,4 Nuclear Power Plant contract
- 2018 ▪ KNPC/IRITEC Vendor Registration
▪ Relocation Manufactory at Busan Mieum Sadan-jigu

**2006 ~
2016**



- 2017 ▪ TATA Limited (India), IISCO Steel Plant(Steel Authority of India), Vendor Registration
- 2016 ▪ Resisted OHSAS 18001
▪ Resisted SIL (Butterfly Valve)
- 2013 ▪ KOREA HYDRO & NUCLEAR POWER Vendor Registration
- 2012 ▪ TAKEER Vendor Registration (U.A.E)
▪ SEMS & KC Certificate

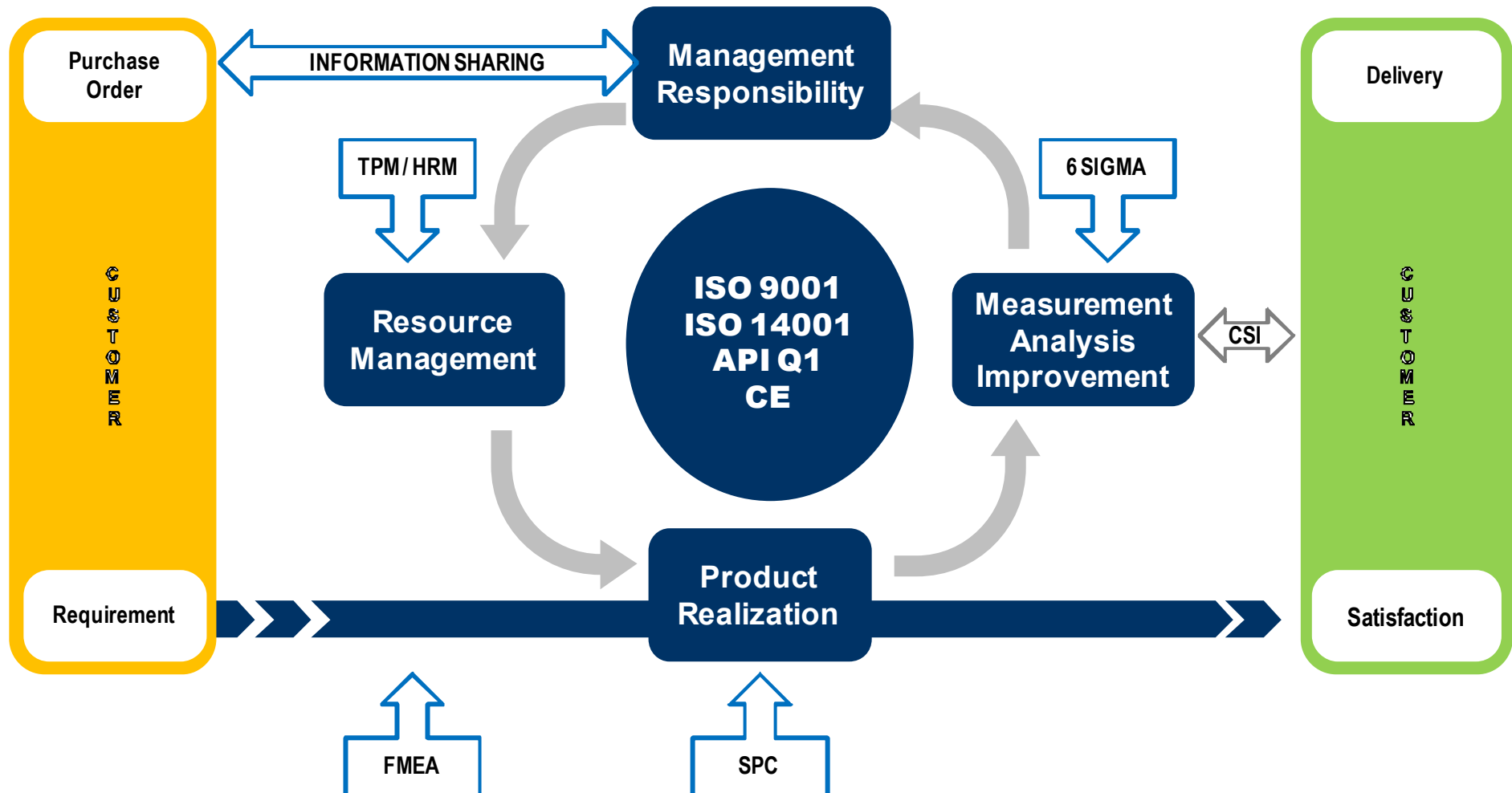
**1990 ~
2005**



- 2009 ▪ SK E&C Vendor Registration
▪ SABIC Vendor Registration (Saudi Arabia)
- 2008 ▪ Resisted ISO 14001
- 2007 ▪ DAELIM, HYUNDAI ENGINEERING, SAMSUNG ENGINEERING Vendor Registration
▪ Registration for API Monogram Audit (API 609/6D)
▪ Fire Certificate (Rubber/Metal Seat Type)
- 2006 ▪ Partner Relationship with POSCO FINEX Project (Auto Goggle Valve)
▪ R&D Center Registration (No. 20063060)
- 2003 ▪ Resisted ISO 9001
- 2002 ▪ Conversion to Corporate “ DUKWON VALVE CO., LTD”
▪ KOREA POWER Vendor Registration
- 1992 ▪ K-WATER Vendor Registration
- 1991 ▪ POSCO Vendor Registration (Double Offset Butterfly Valve, Plug Valve, Ball Valve)
- 1990 ▪ Established “ DUKWON VALVE “

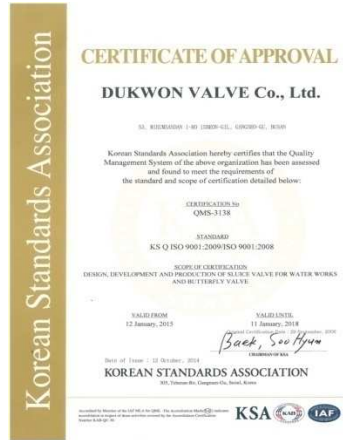
3. QUALITY MANAGEMENT

Continual Improvement of the Quality Management System



4. CERTIFICATE

ISO 9001



ISO 14001



SIL



OHSAS 18001



API 6D-0764



API 609-0008



FIRE Cert.



MES Registration



4. CERTIFICATE

KEPCO CERT.

KNPC

KOREA NUCLEAR

SABIC

WATER WORKS

DUKWON VALVES | 주 | 덕원밸브 | www.dwvalve.co.kr

Saudi Basic Industries Corporation
SABIC Engineering & Project Management
 Jeddah
 Al-Jedid

شركة البتروكيماويات الأساسية
 إدارة المشاريع والهندسة
 جدة
 الجديد

FACSIMILE TRANSMISSION

☐ URGENT ☒ ORDINARY ☐ CONFIDENTIAL

Date: 04th February 2009 No of Pages: 02
 Ref: 1294009 Fax No: 362 2112

To : Mr. Bradlee A. Al-Daghlas, Training & Recruitment Manager, AEP-MSE
 Training & Eng. (E-01-Jeddah 2009)
 Subject : Additions of PNV Values L24, L25, L26 Products offered to you as SABIC Approved Vendor List

Dear Sir,
 We wish to inform you that your company has been included in SABIC Engineering & Project Management Approved Vendor List for the following:

ITEM NO.	Product	Unit Rates & pressure Rating	SABIC MARK
1	Multiflow Valve both metal & non metal including inlet-outlet type	Size ranges from 1/2" to 24" water & steam & of following sizes Size range 2" x 1/2" Rating: 150# In case of higher Ratings to be sent 2R" only.	DNV Valves Co. Kosice

In order to update our vendor data base, please fill in the attached form (Annexure F) and send it back to the undersigned. This is for the confirmation of your address and contact details.

Best Regards,

 Jassem A. Al-Daghl
 Vendor Committee's Leader

cc: FAS

P. O. Box - 440003, Al-Jabal binahmadi City - Jeddah - Saudi Arabia
 Tel: 362 2111 1000 Fax: 362 2111 1010

5. FRONT VIEW

**Address****Tel.****Fax.****HP.****Email.**

53,Mieumsandan 1-ro 15beon-gil, Gangseo-gu, Busan, 46730 Republic of
Korea

(82)51-831-9020

(82)51-831-9019

<http://www.dwvalve.co.kr>

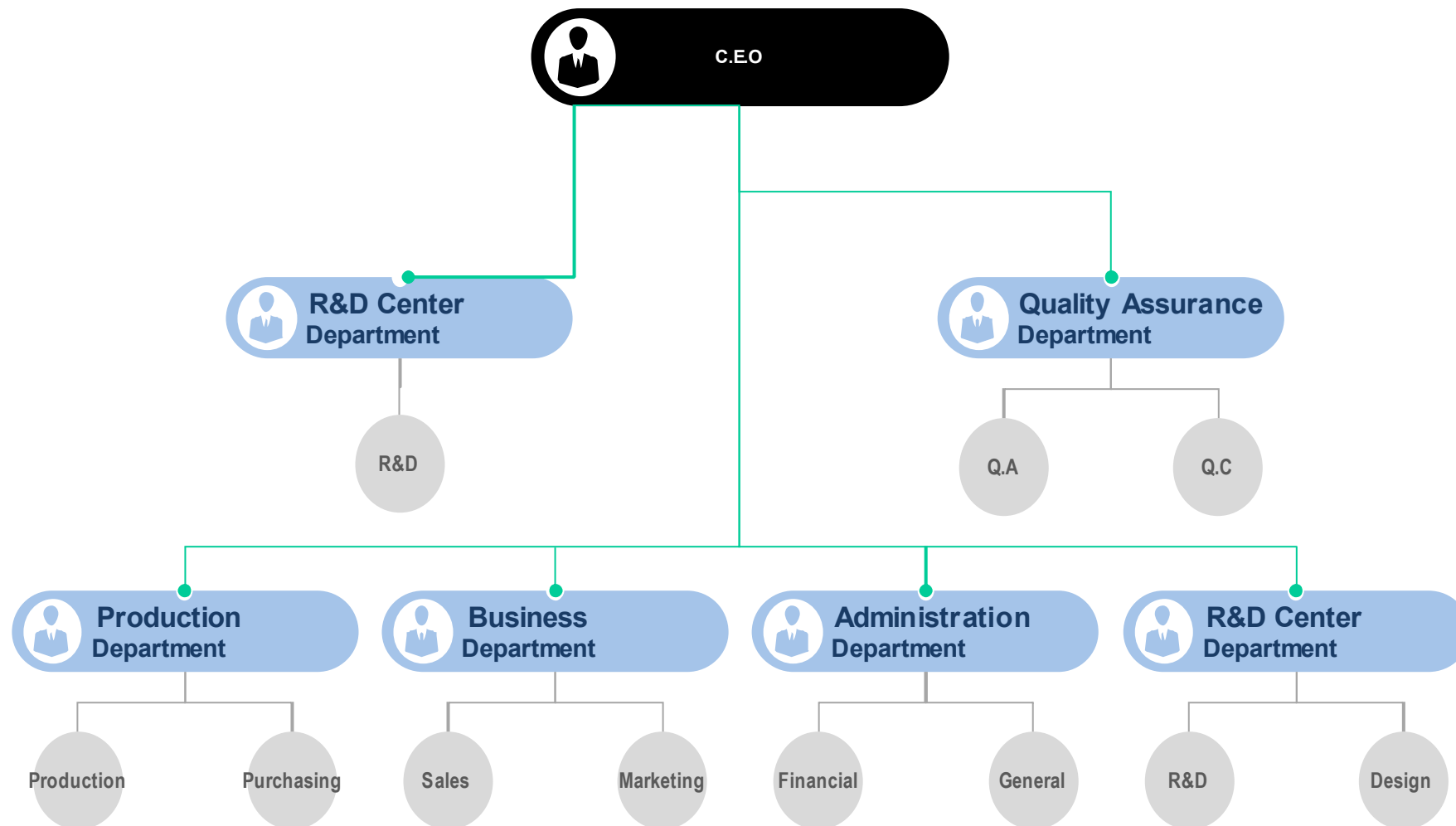
dwvalve@chol.com

OFFICE
R&D CENTER

FACTORY

INSPECTION & TEST
LABORATORY

6. ORGANIZATION



7. EQUIPMENT

MACHINING

- Dukwon's machine shops, employ state-of-the-art equipment, ranging from manual control to CNC machines, including very large vertical lathes and Boring machines
- Spacious bays, equipped with large lifting capacity overhead cranes, enable the assembly and testing departments to complete the products.



Boring Machine

- Bed Size : 3,000x3,000
- SPINDLE SIZE : Ø180
- CAPABLE WEIGHT : 9,000Kg
- DIGITAL CONTROL



Vertical Lathe

- BED SIZE : Ø4200*1600H
- SWING CAPACITY : Ø5000*3000H
- Numerical Automatic Control
- 2 RAM TYPE



Vertical Lathe

- BED SIZE : Ø4000
- SWING CAPACITY : Ø5500*3000H
- Numerical Automatic Control
- 2 RAM TYPE

7. EQUIPMENT

Hydrostatic Tester (Size : ~ 3000A)



Quality Assurance



- The Q/A and Q/C Departments report directly to the President or Managing Director.

All programs are in accordance with ISO-9001 / API Q1, ISO-14001.

- Our Q/A continues through material purchase, receiving and inspection along with material certifications.

It controls manufacturing including fabrication, welding, heat treatment, assembly, testing, document packages-data books and shipping according to ISO-9001 / APIQ1, ISO-14001 procedures and documentation.

8. BUSINESS AREA

POWER PLANT

OIL & GAS INDUSTRY

STEEL IRON INDUSTRY

WATER WORKS



9. CUSTOMER

posco

Posco
www.posco.co.kr

DAELIM

Daelim
www.daelim.co.kr



SK E&C
www.skec.co.kr

SAMSUNG **SAMSUNG**
ENGINEERING

Samsung Engineering
www.samsungengineering.co.kr



Doosan Heavy Industries
& Construction
www.doosanheavy.com

posco
포스코건설

Posco E&C
www.poscoenc.com



Hyundai E&C
www.hdec.com



Hyundai Engineering
www.hec.co.kr



Daewoo E&C
www.daewooenc.co.kr



K water
www.kwater.or.kr



Korea Hydro & Nuclear
Power
www.khnp.co.kr



Korea Electric Power
Corporation
www.kepco.co.kr

9. CUSTOMER



Sabic (Saudi Arabia)
www.sabic.com



Sidem & Veolia (France)
www.sidem-desalination.com



TATA STEEL
www.tatasteel.com



IISCO STEEL
www.sail.co.in



JINDAL STEEL & POWER
www.jindalsteelpower.com



IRITEC
<http://www.iritec.com/>



KNPC
<https://www.knpc.com/en/>



Companhia Siderurgica
do Pecem (Brazil)
www.cspecem.com



Takreer (U.A.E)
www.takreer.com



Technip (France)
www.technip.com



Hitachi (Japan)
www.hitachi.com



Mitsui Engineering &
Shipbuilding (Japan)
www.mes.co.jp



KRAKATAU STEEL
Krakatau Steel (Indonesia)
www.krakatausteel.com



Fisia Italmimpianti (Italy)
www.fisiait.com



Petro Vietnam (Vietnam)
www.pvc.vn

10. PRODUCT – POWER PLANT

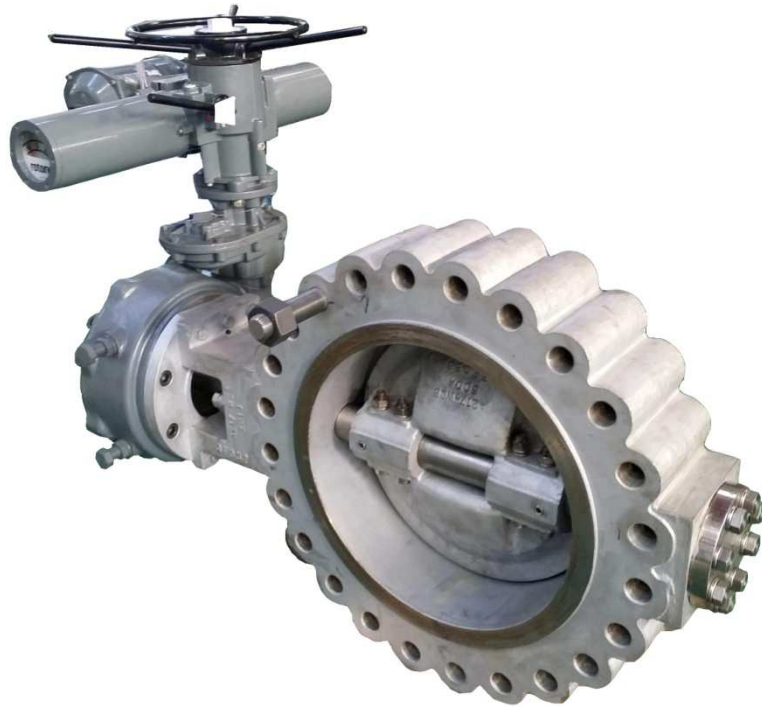


METAL SEAT BUTTERFLY VALVE
Design Temp: -195 ~ 750 °C
Size : 50A~ 3000A

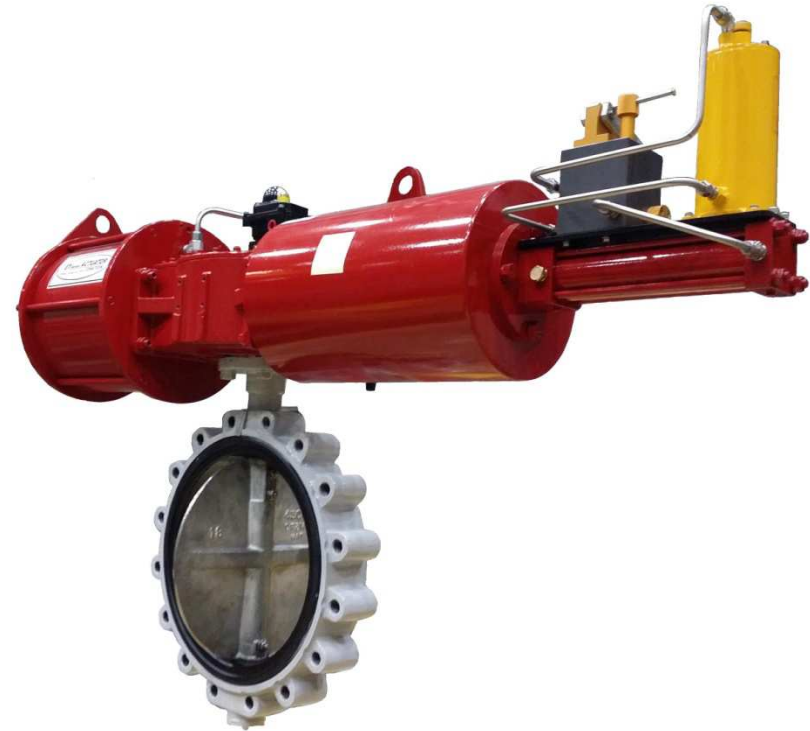


PNEUMATIC BUTTERFLY VALVE
APPLICATION : ENGENHARIA E CONSTRUCAO DO BRAZIL LTDA
BRAZIL CSP STEEL PLANT
Size : 400A

10. PRODUCT - POWER PLANT



MOTOR OPERATED VALVE
APPLICATION : SAMSUNG C&T Corporation
DONGDOOCHEON COMBINED CYCLE POWER PLANT
Size : 500A / 40K



PNEUMATIC BUTTERFLY VALVE
APPLICATION : KOREA WEST POWER
DANGJIN THERMAL POWER PLANT UNIT#9, 10
Size : 450A

10. PRODUCT – POWER PLANT



NON-RETURN CHECK VALVE
APPLICATION : EMPRESA ELECTRICA COCHRANE S.A
CHILE COCHRANE THERMOELECTRIC POWER PLANT
Size : 1500A

10. PRODUCT – POWER PLANT

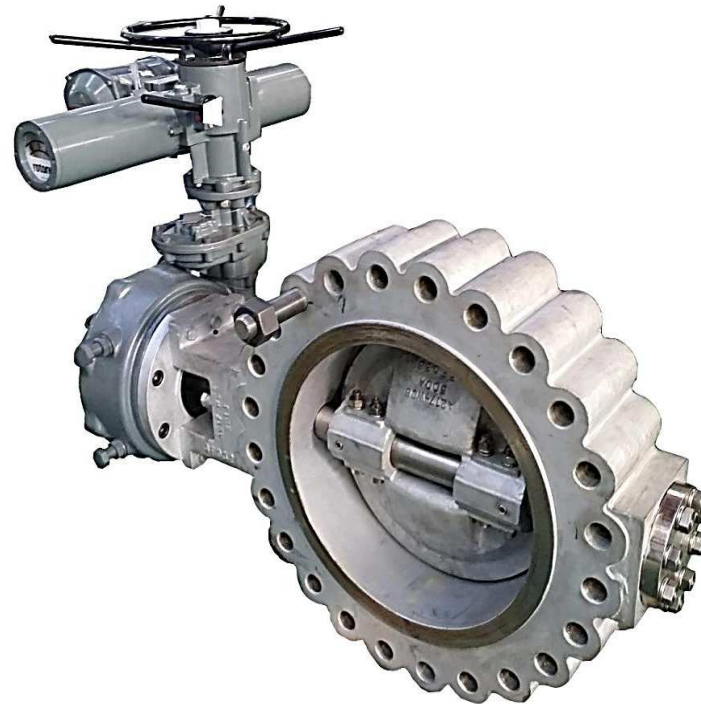


NON-RETURN CHECK VALVE
APPLICATION : CIREBON POWER INDONESIA
Size : 2100A

10. PRODUCT - POWER PLANT



Burner Valve Rack
Project : Taeon Thermal Power Plant
Service : Fuel Burning System



Motor Operated Butterfly Valve
Project : Dongducheon Byeolnae Cogeneration Plant
Size : 500A
Rating : 600 LBS

10. PRODUCT - POWER PLANT



Motor Operated Butterfly Valve
Size : 2850A
Project : Malaysia Tenaga Nasional Berhad 3A Fast Track
Service : CCW H/E B Outlet
Fluid : Sea Water



Motor Operated Butterfly Valve
Size : 800A
Project : Malaysia Tenaga Nasional Berhad 3A Fast Track
Service : CCW Pump A Discharge
Fluid : Water

10. PRODUCT - POWER PLANT



Motor Operated Butterfly Valve
Size : 2700A
Project : Vietnam Thai Binh2 Thermal Power Plant
Service : CWP Discharge
Fluid : River(Brackish) Water

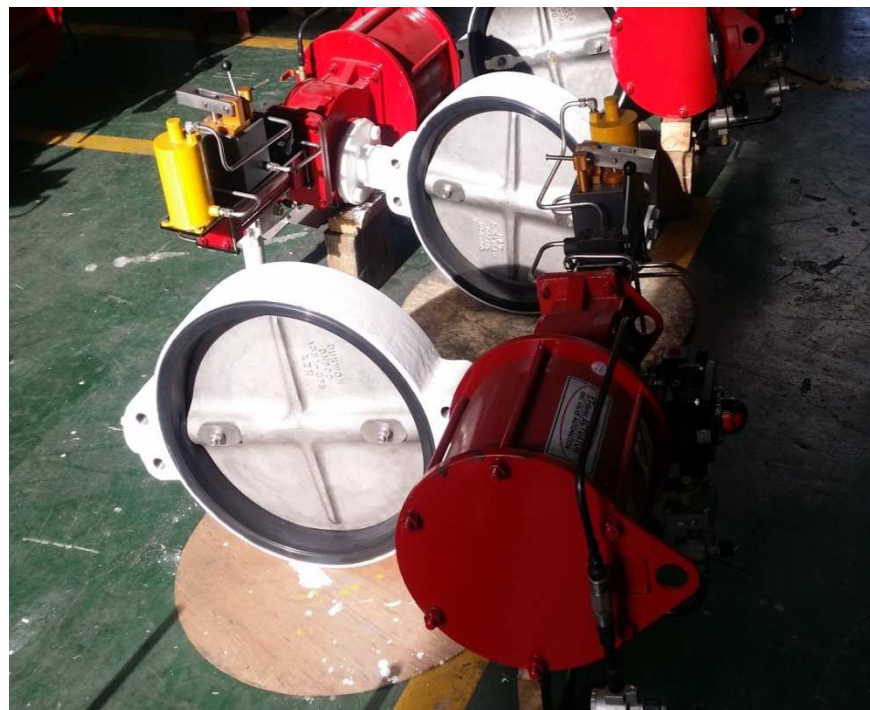


Motor Operated Butterfly Valve
Size : 750A
Project : Vietnam Thai Binh2 Thermal Power Plant
Service : ACW PP Discharge
Fluid : River(Brackish) Water

10. PRODUCT - POWER PLANT



Motor Operated Butterfly Valve
Size : 2200A
Project : Taeon Thermal Power Plant
Fluid : Sea Water

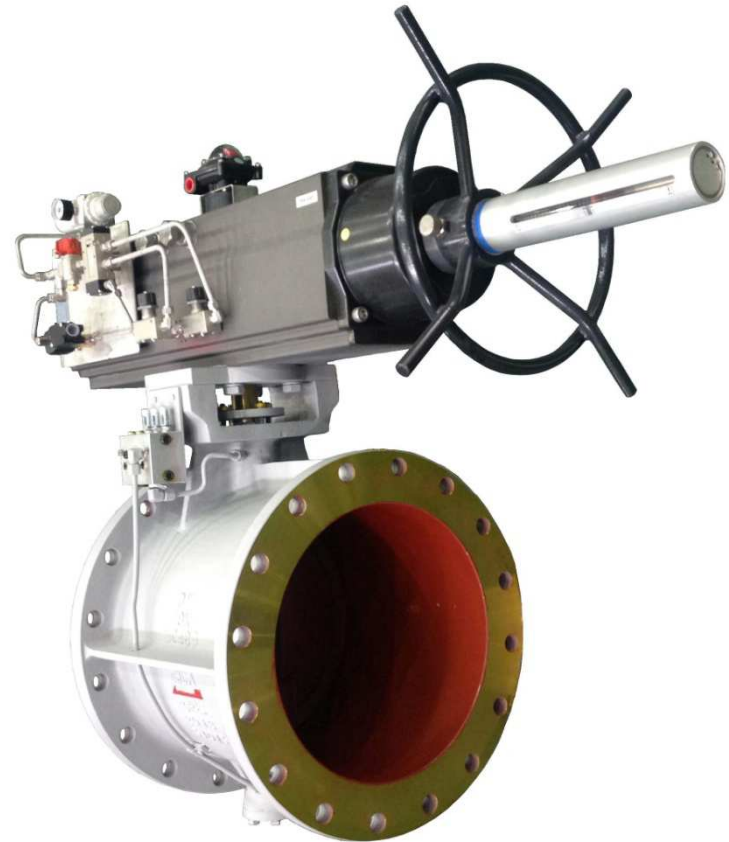


Motor Operated Butterfly Valve
Size : 500A
Project : Taeon Thermal Power Plant
Fluid : Air

10. PRODUCT – WATER WORKS



METAL SEAT BUTTERFLY VALVE
Design Temp: -195 ~ 750 °C
Size : 50A~ 3000A



PNEUMATIC BUTTERFLY VALVE
APPLICATION : ENGENHARIA E CONSTRUCAO DO BRAZIL LTDA
Size : 400A

10. PRODUCT – OIL & GAS



MOTOR OPERATED BUTTERFLY VALVE / METAL SEAT TYPE
PB2 100,000 MTA REVAMPING PROJECT
SIZE : 150A,300A,400A,700A #150,#300
FLUID : C4+N2,VAPOR,GAS(500 °C)/COOLING WATER(175 °,LIQUID)

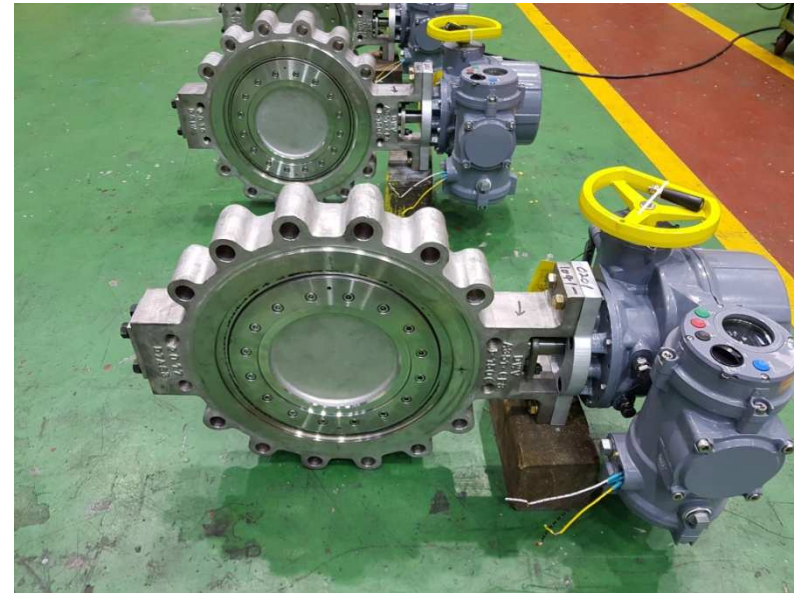


PNEUMATIC OPERATED BUTTERFLY VALVE / METAL SEAT TYPE
PB2 100,000 MTA REVAMPING PROJECT
SIZE : 250A,300A,350A #150
FLUID : C4,VAPOR,GAS(520 °C)/HYDROCARBON(175 °,LIQUID)

10. PRODUCT – OIL & GAS



AIR MOTOR OPERATED BUTTERFLY VALVE / METAL SEAT TYPE
S-OIL RESIDUE UPGRADING COMPLEX PROJECT
SIZE : 300A,400A,650A,850A,1000A #150
FLUID : COOLING WATER/PROPYLENE OXIDE(LIQUID)



MOTOR OPERATED BUTTERFLY VALVE / METAL SEAT TYPE
S-OIL RESIDUE UPGRADING COMPLEX PROJECT
SIZE : 300A,400A,850A
FLUID : COOLING WATER

10. PRODUCT – OIL & GAS



MOTOR OPERATED BUTTERFLY VALVE / METAL SEAT TYPE
S-OIL RESIDUE UPGRADING COMPLEX PROJECT
SIZE : 500A, 550A, 600A, 1500A #150
FLUID : COOLING WATER/HOT WATER(150℃)



MOTOR OPERATED BUTTERFLY VALVE / METAL SEAT TYPE
S-OIL RESIDUE UPGRADING COMPLEX PROJECT
SIZE : 1500A #300
FLUID : HYDROCARBON(260℃)

10. PRODUCT – OIL & GAS



MOTOR OPERATED BUTTERFLY VALVE / METAL SEAT TYPE
SEP sSBR PROJECT / AL-JUBAIL PETROCHEMICAL COMPANY(KEMYA/SABIC)
SIZE : 350A , #150
FLUID : RUBBER CEMENT (150℃)

10. PRODUCT – STEEL PLANT

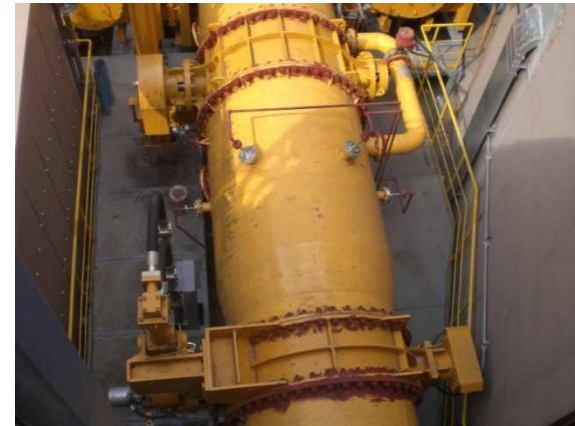
TRT VALVE



- POSCO KWANGYANG
- ISV 2000A, Design Temp: 250 °C



- POSCO KWANGYANG
- TSV 2000A, Design Temp: 250 °C



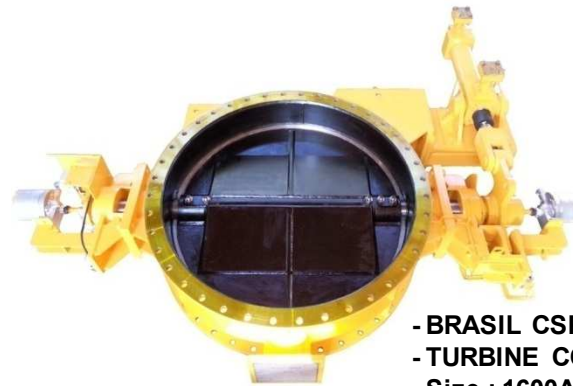
- POSCO KWANGYANG
- TCV 1800A, Design Temp: 250 °C

10. PRODUCT – STEEL PLANT

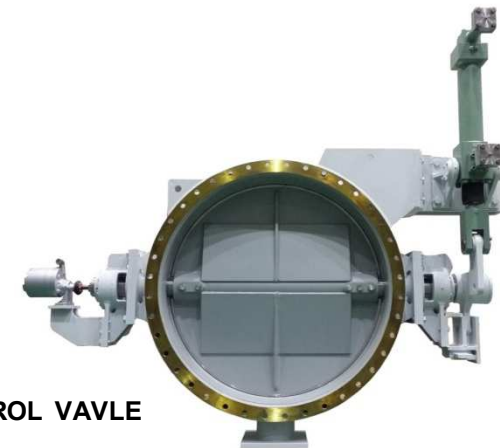
TRT VALVE



- POSCO KWANGYANG
- Outlet Shut-off Valve (OSV) 3400A



- BRASIL CSP
- TURBINE CONTROL VALVE
- Size : 1600A



- IISCO STEEL PLANT
- MAIN BY-PASS CONTROL VALVE
- Size : 1200A

10. PRODUCT – STEEL PLANT

HOT STOVE PROCESS VALVE



HOT STOVE VALVE

BRASIL CSP, INDONESIA KRAKATAU, POSCO
Water Cooling Gate Valve 1600A / COPPER DISC
Design Temp: 1500 °C



HOT BLAST VALVE

HYUNDAI STEEL
Water Cooling Gate Valve 1800A
Design Temp: 1400~1500 °C

10. PRODUCT - STEEL PLANT

HOT STOVE PROCESS VALVE



POSCO KWANGYANG
Burner Gas Valve 1700A
Cold Blast Valve 1800A
Cog Shut-off Valve 1000A
Burner Air Valve 1800A
Chimney Valve 1900A



HYUNDAI STEEL
Cold Blast Valve 1000A/1600A5



HYUNDAI STEEL
Waste Gas Valve 1000A/1600A



ESFAHAN STEEL COMPANY(IRAN)
Gas Valve for Burner 1500A
Combustion Air Valve for Fan 1800A

10. PRODUCT - STEEL PLANT

HOT STOVE PROCESS VALVE



PNEUMATIC, HYDRAULIC OPERATE VALVE
PROJECT : BRASIL CSP STEEL PLANT
SIZE : 900A, 500A, 400A
FLUID : HOT STOVE PROCESS LINE / 450°C



GATE VALVE
PROJECT : BRASIL CSP STEEL
Size : 900A
SERVICE : HOT STOVE PROCESS
FLUID : COLD BLAST / 450°C

10. PRODUCT – STEEL PLANT

HOT STOVE PROCESS VALVE



SNORT VALVE

BRASIL CSP
HS PROCESS LINE / 1800A, Design Temp: 300 °C



BRASIL CSP

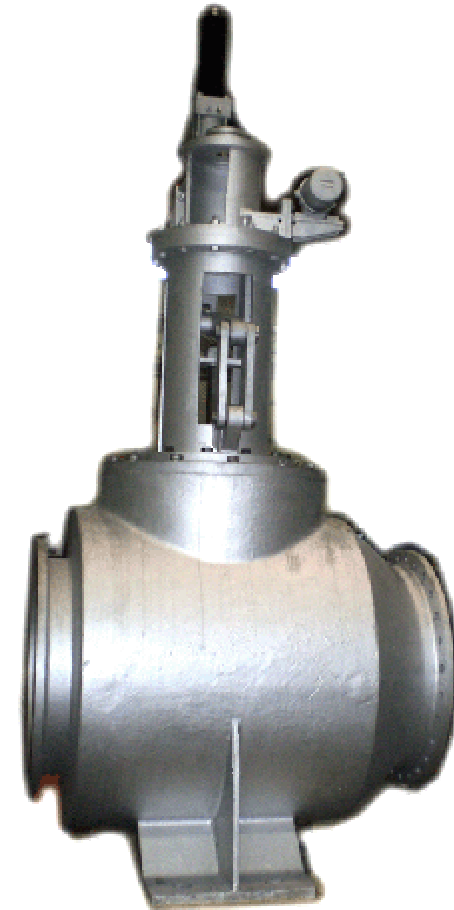
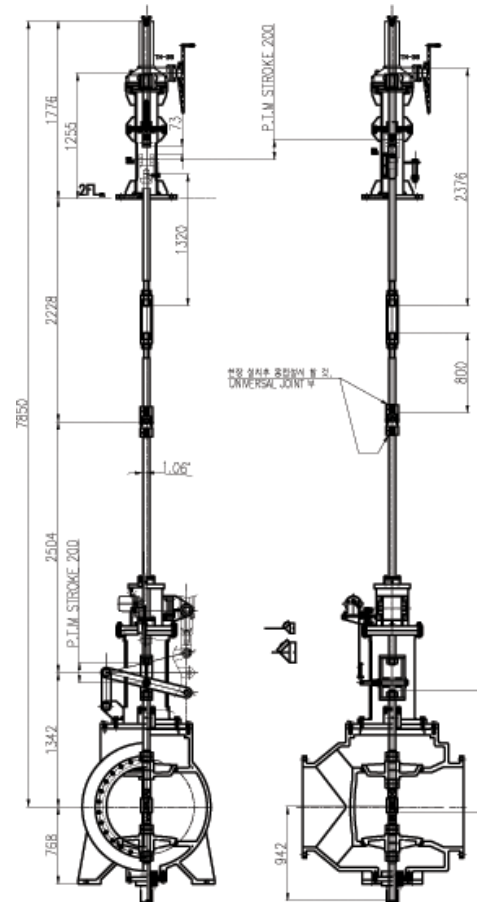
Gas Safety Shut-off Valve 1600A
Comb. Air Valve for Burner 1600A
Gas Valve for Burner 1600AC

10. PRODUCT – STEEL PLANT

BLOWER VALVE



POSCO KWANGYANG
9MB – Main Blow-off Valve 800A
Sub Blow-off Valve 300A



10. PRODUCT – STEEL PLANT

BLOWER VALVE



POSCO
Anti Choke Valve 1100A



POSCO
Suction Valve 1800A



POSCO
Non Return Check Valve 1100A



HYUNDAI STEEL
BF Selection Valve 1100A, 1400A, 1600A

10. PRODUCT - STEEL PLANT

GAS LINE HOLDER VALVE



HYUNDAI STEEL
Gas Holder Main Line 2700A
Fluid : LDG



HYUNDAI STEEL
Gas Holder Main Line 3700A
Fluid : BFG

10. PRODUCT - STEEL PLANT



POSCO POHANG
Gas Holder Main Line 3400A
Fluid : LDG



POSCO KWANGYANG
Gas Holder Main Line 1300A / LDG Booster COG inlet
Waterseal Valve
Fluid : LDG

10. PRODUCT – STEEL PLANT



- VALVE TYPE : Hot Gas Gate Valve
- VALVE SIZE : 1900/2400
- APPLICATION : 3 FINEX
- Design Temp: 860°C(internal)
300°C(body shell)
- Weight : App. 120Ton / set

10. PRODUCT – STEEL PLANT



- FINEX-HRSG BOILER
- Main Control Valve 2400A/2100A
- Design Temp: 750 °C



- LOWER CUT OFF VALVE
- PROJECT : POSCO 3 FINEX (TEMP: 730 °C)
- SIZE : 250A

10. PRODUCT - STEEL PLANT



- Pneumatic Operated Butterfly Valve / Metal Seat
- PROJECT : POSCO 3 FINEX
- Fluid : CO₂
- SIZE : 500A ~ 1700A

10. PRODUCT - STEEL PLANT

- APPLICATION : **STEEL-IRON / POSCO**
- VALVE TYPE : BUTTERFLY / SLIDE GATE
- VALVE SIZE : 2400A / 1300A / 2000A / 900A
- TYPE : CASTING
- MATERIAL : Stainless Steel
- SEAT : EPDM / Metal



10. PRODUCT – STEEL PLANT



AUTO GOGGLE VALVE



SLIDE GATE VALVE



WATER SEAL VALVE



METAL SEAT BUTTERFLY VALVE



PLUG VALVE




COAL GATE VALVE

10. PRODUCT – STEEL PLANT



PNR PLANT/ NSCE/POSCO
Control/Shut-off VALVE
Design Temp: -30~ 450 °C
Size : 50A~ 1500A





THANK YOU !