



SAVALAN

SHIPPING



SAVALAN SHIP SUPPLY & MARINE SERVICES

WHAT WE DO?

Ship Chandling & Supply Works

Ship chandling refers to the business of supplying provisions, stores, and equipment to ships while they are in port. This includes a wide range of goods and services, such as food, beverages, cleaning supplies, safety equipment, navigation equipment, spare parts, and fuel.

The main purpose of ship chandling is to ensure that the crew and passengers of a ship have access to all the necessary supplies and equipment during their time in port. This helps to keep the ship operational and ensure the safety and comfort of those on board.

Ship chandlers are typically responsible for procuring, storing, and delivering the supplies and equipment needed by ships. They work closely with ship owners, captains, and crew members to understand their specific needs and requirements, and then source and deliver the necessary items.

In addition to basic supplies and equipment, ship chandlers may also provide a range of other services, such as customs clearance, logistics management, and repair and maintenance services.



WHAT WE DO?

Marine Equipments & Spare Parts

Marine equipment and spare parts are essential components of any maritime vessel, ranging from small pleasure boats to large cargo ships and oil tankers. These equipment and parts are designed to help ensure the safety and efficiency of a vessel's operation, as well as to meet the regulatory requirements of the maritime industry.

Marine equipment can include items such as navigation equipment, communication systems, safety equipment (such as life rafts, life jackets, and fire extinguishers), propulsion systems (such as engines, propellers, and fuel systems), and environmental protection equipment (such as oil spill response equipment).

Spare parts for marine equipment can include items such as engine parts, electrical components, valves, piping, pumps, and other machinery components. These spare parts are critical in ensuring the smooth and uninterrupted operation of a vessel and can help prevent costly breakdowns and delays.



WHAT WE DO?

Ship Repair & Technical Services

Ship repair and technical services refer to the maintenance, repair, and upgrading of ships and their equipment. This includes a wide range of services, such as hull and structural repairs, mechanical and electrical repairs, painting and blasting, and installation and upgrading of equipment and systems.

Ship repair and technical services are essential for ensuring the safety, reliability, and efficiency of ships, and for maintaining compliance with industry regulations and standards. These services are typically carried out by skilled technicians and engineers who specialize in ship repair and maintenance.

Ship repair services can include dry docking, which involves taking the ship out of the water and onto a dry dock for inspection and repair work. This can include work on the hull, propellers, and other structural components of the ship. In-water repairs can also be performed when the ship is still afloat, and can include work on the engine, electrical and mechanical systems, and other equipment.



WHAT WE DO?

Ballast Water Management System Retrofits

Ballast Water Management System (BWMS) retrofits refer to the installation of equipment on existing ships to comply with international regulations aimed at preventing the spread of invasive aquatic species through ballast water.

Ballast water is used to stabilize ships when they are empty or partially loaded by filling tanks with water. However, this water can contain a variety of organisms, such as bacteria, viruses, algae, and even fish and other aquatic animals, that can be transported to new locations and potentially cause ecological and economic damage.





**Easy Access & Multiple
Solution**



Premium Quality



Quick Delivery



Ship Chandling

Provision & Bonded store

- ✓ Fresh & Frozen provisions
- ✓ Canned & Dry provisions



Ship Chandling

TECHNICAL STORE

- ✓ SAFETY EQUIPMENTS
- ✓ DECK STORES
- ✓ ENGINE STORES
- ✓ CABIN STORES
- ✓ PNEUMATIC & ELECTRICAL TOOLS
- ✓ HYDRAULIC EQUIPMENTS
- ✓ ANCHOR & CHAINS
- ✓ ROPE & HAWSERS
- ✓ GALLEY EQUIPMENT
- ✓ CLOTH AND LINEN PRODUCTS
- ✓ NAUTICAL EQUIPMENTS & PUBLICATIONS
- ✓ STATIONERY STORES
- ✓ MEDICAL STORES
- ✓ MACHINERY EQUIPMENT
- ✓ MARINE CHEMICALS
- ✓ CLEANING EQUIPMENTS & PAINTINGS

Email : info@savalanshipping.com

MARINE EQUIPMENTS & SPARE PARTS

What We Offer

Our business focuses on all level of supports , providing a wide range of spare parts and marine Supply.

We work closely with OEMs and operators , and provide all possible solutions / alternatives with shortest time and best freight costs

Range of Products

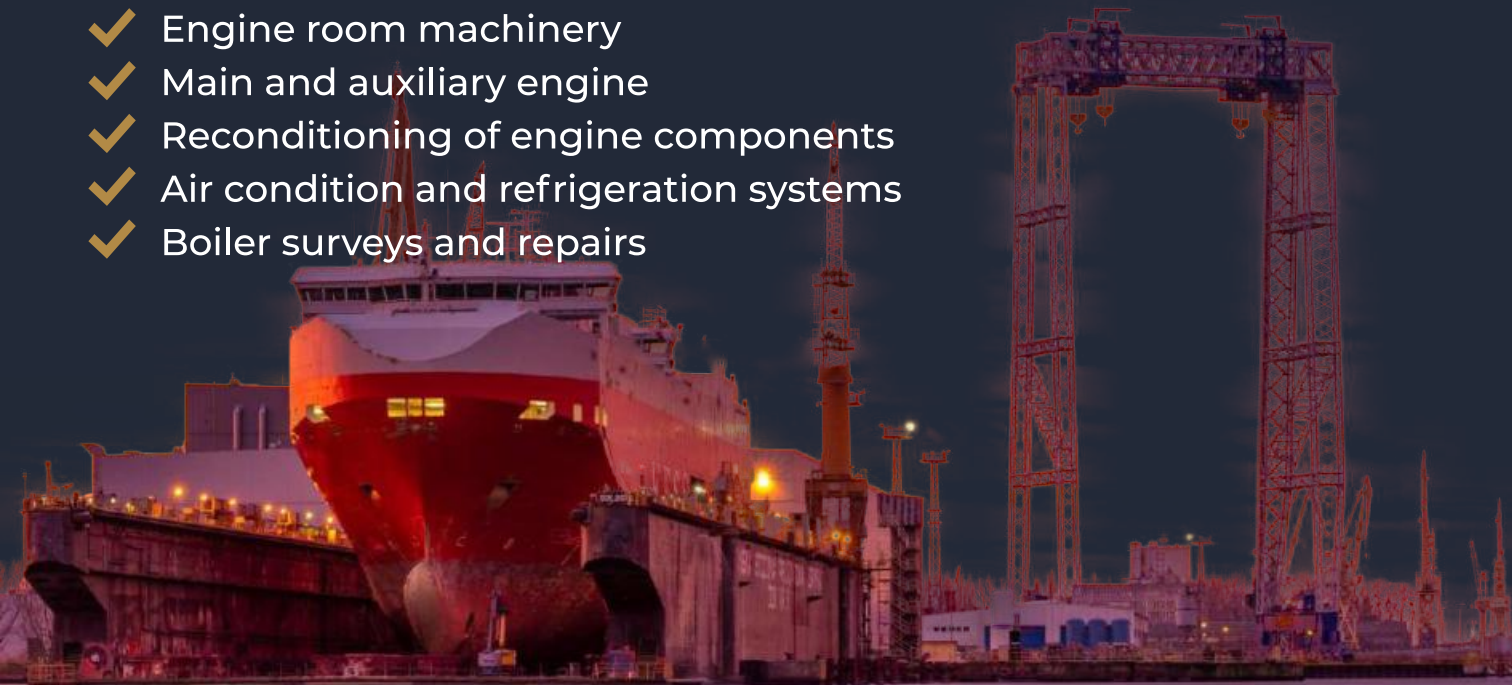
technical@savalanshipping.com

- ✓ Main Engines
- ✓ Diesel Generators
- ✓ Aux Machinery
- ✓ Turbocharger
- ✓ Governor
- ✓ Pumps
- ✓ Heat Exchanger
- ✓ Compressors
- ✓ Seperators
- ✓ Electric motors



SHIP REPAIR & TECHNICAL SERVICES

- ✓ Afloat repairs
- ✓ Emergency repairs
- ✓ Riding squads
- ✓ Steel and piping fabrication and construction
- ✓ Deck machinery
- ✓ Anchor chain
- ✓ Cargo handling equipment
- ✓ Outfittings
- ✓ Engine room machinery
- ✓ Main and auxiliary engine
- ✓ Reconditioning of engine components
- ✓ Air condition and refrigeration systems
- ✓ Boiler surveys and repairs

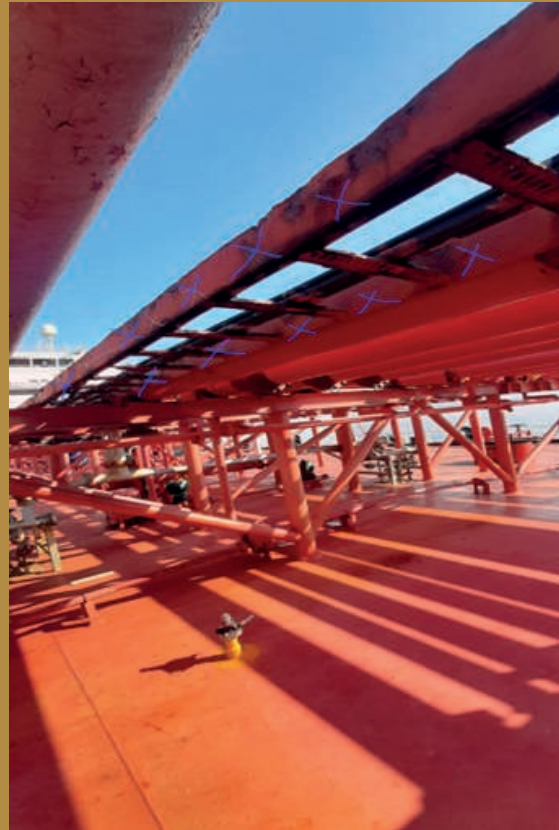


SHIP REPAIR & TECHNICAL SERVICES

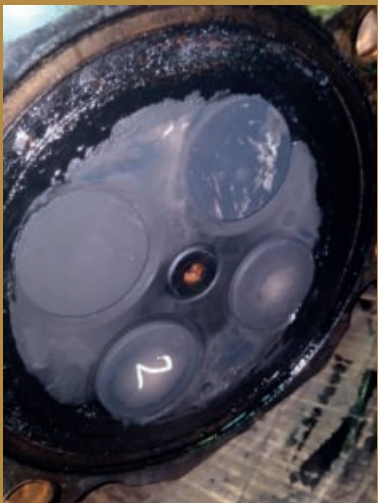
- Electrical & electronic components ✓
- Automation systems and calibration services ✓
- Hydraulic and pneumatic equipment ✓
- Navigation equipment ✓
- Underwater services and Inwater survey ✓
with Class Approved diving companies
- Cleaning and surface preparation in cargo holds and tanks ✓
- Servicing & Certification of LSA & FFE & CO2 Systems ✓
- Load Testing of Cargo Gear and LSA ✓
- Thickness Measurement(UTM) and NDT Tests ✓
- Gas free & Fire free certification ✓
- Turbocharger and Governor ✓
- Cargo tank cleaning and demucking ✓



Fabrication of BMMS PIPES IN WORKSHOP



Main Engine and Aux. Eng. Recondition;



Turbocharger



Governor



Pv Valves recondition and Tests with Class Surveyor;

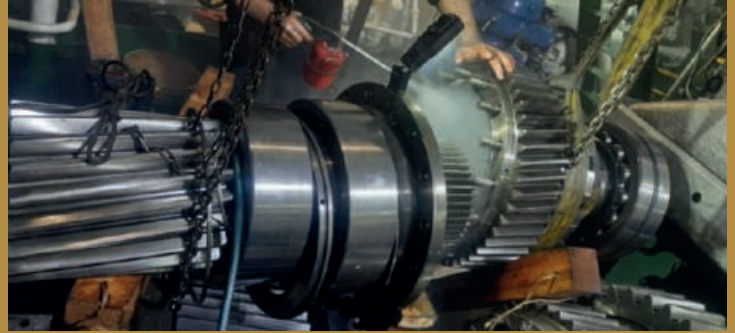


Servicing & Certification of LSA & FFE & CO2 Systems

- INSPECTION
- CALIBRATION
- HYDROSTATIC TEST & REFILLING
- RECOVERY BOTTLE
- ANNUAL SERVICE AND AIR QUALITY TEST CERTIFICATE

GEARBOX OVERHAUL;

Advance Gearbox Bearing-Pad-Inlet Shaft
Replacement and Gladge Inspection ;



UTI CALIBRATION;



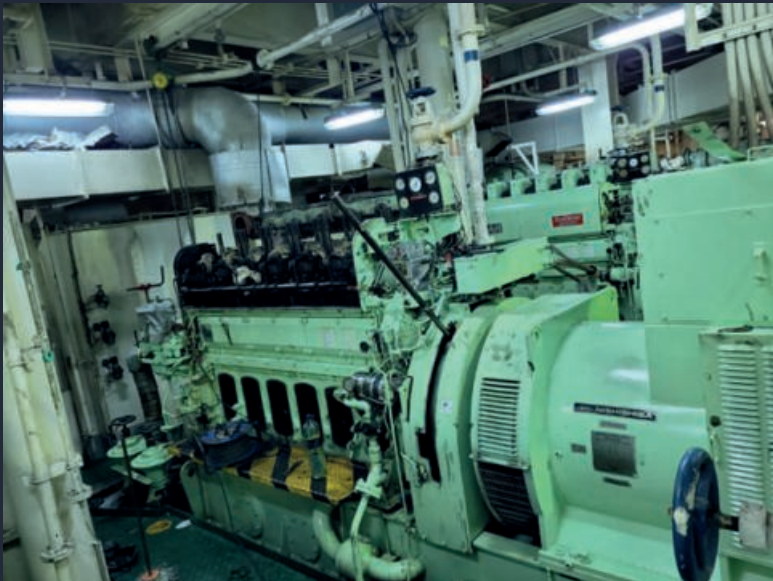
Sales
Care
Repair
Spare part
Calibration



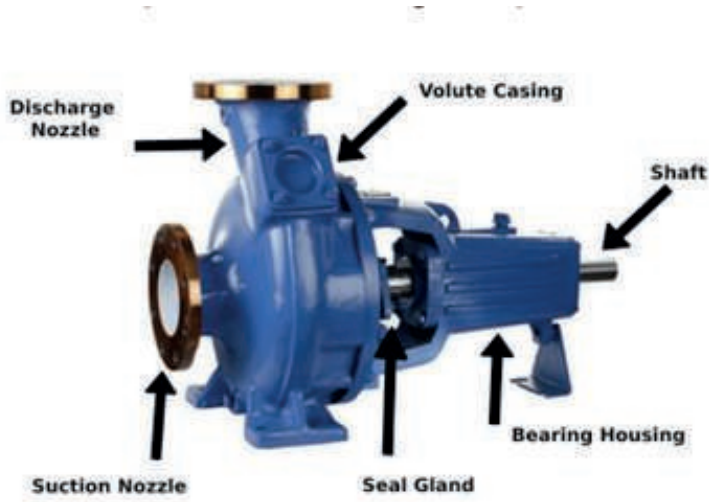
Repair And Services For Bridge & Gmdss;
Echosounder System
Navtex Repair And Exchange
Gyrocompass Sperry Marine

Aux. Eng. Overhaul

- ✓ HYDRAULIC AND PNEUMATIC SYSTEM FAILURE
- ✓ FUEL PUMPS OVERHAUL
- ✓ PISTON AND VALVE-SEAT RECONDATION
- ✓ HEATER AND COOLER WASHING AND TESTED
- ✓ AIR COOLER
- ✓ OIL COOLER
- ✓ H/T AND L/T COOLER
- ✓ BOX COOLER
- ✓ FUEL OIL HEATER
- ✓ PRUFIER HEATER



PUMP REPAIR



SEA WATER PUMP
FRESH WATER PUMP
LUBRICATING OIL PUMP
CARGO PUMP
HYDRAULIC PUMP
M/E OIL AND FUEL PUMP
DIESEL GENERATOR ACOUPLE
OIL AND FUEL PUMP

FABRICATION OF ACCOMADATION LADDER IN WORKSHOP;



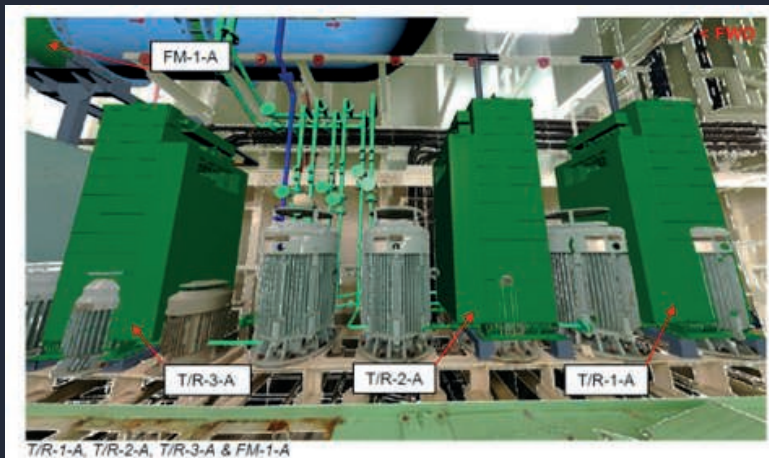
2nd Hand spare parts;



BALLAST WATER MANAGEMENT SYSTEM RETROFIT

Having in mind that IMO Ballast Water Management Convention on 8 September 2017 forced substantial number of vessels are required to install Ballast water Management system, Savalan Shipping is well-prepared on this demand with our Ship Repair managers , solution partners and well-equipped workshops.

3D Scanning & Feasibility Process



Prefabrication & Installation



We are offering all BWTS related valves , electrical cables , connections , transformers with fast delivery time and best price.

SPARE PARTS;

MAIN ENGINE & DIESEL GENERATOR

Wide range for types of 2 STROKE & 4 STROKE engines for brands
MAN B&W, DAIHATSU, WARTSILA SULZER, YANMAR
AKASAKA MITSUBISHI, HYUNDAI HIMSEN, HANSHIN, MAK, CUMMINS, VOLVO PENTA, SKL, etc.

MAIN ENGINE & DIESEL GENERATOR

TURBOCHARGER (T/C)

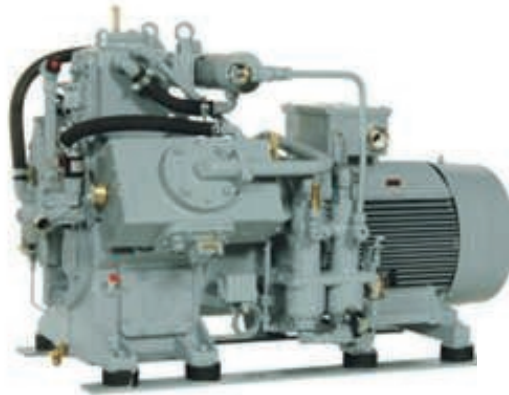
IHI, MITSUBISHI, MAN, NAPIER, ABB, KBB, MAN

SEPARATOR

ALFA LAVAL, WESTFALIA, MITSUBISHI, NIREX



AIR COMPRESSOR



**TANABE, YANMAR,
SPERRE, J.P. SAUER &
SOHN, HATLAPA,
HAMWORTHY, TEIKOKU,
TAMROTOR, DALGAKIRAN,
MATSUBARA ALUP, ETC.**

MARINE PUMPS

**TAIKO KIKAI, ALLWEILER, AZCUE, NANIWA, DESMI, SHINKO, TEIKOKU, ISHII, IMO,
GRUNDFOS, BORNEMANN, KSB, IRON, etc.**



PLATE HEAT EXCHANGERS

SWEP TRANTER, APV, SONDEX, ALFA LAVAL, GEA WESTFALIA

COMPRESSOR

BOCK, SABROE, DAIKIN, CARRIER, DORIN, YORK

GOVERNORS

WOODWARD, ZEXEL, EUROPA

OTHERS

**FWG, BOILER, FILTER/STRAINER, ELECTRIC, HYDRAULIC & PNEUMATIC SYSTEM,
WINDLASS, WINCH, CRANE, MARINE REFRIGERATION SYSTEM, HVAC SYSTEM, etc.**



SUPPLEIR;
TECHNICAL STORES;
Deck, Engine & Cabin Stores



Tableware and Galley equipment



Chemicals & Cleaning products



Lashing equipments



Safety & Fire Fighting Equipments Charts & Nautical publications



Instruments & Equipments for Navigation & Bridge



Medical Supplies



- Tools, hand, electrical & pneumatic



All metals in sheets, bars, pipes



Couplings & Fittings for all applications



Pumps & Valves



✓ General Electrical Supplies

✓ Packings and Jointings

Steel Wire Ropes

✓ In-house shop for ropeworks with a wide range of diameters for prompt delivery

✓ All kind of galvanized steel wire ropes for mooring, towing and lifting

✓ Cut to size and construction of slings

✓ Talurit spliced eyes and thimbles , sockets casting

Testing and Inspection

✓ Testing and Inspections facility approved by

Classification Societies

✓ Horizontal Testing Bed up to 100 tons

✓ Single Wires Vertical Testing Machine up to 5 tons

✓ Hydraulic Splicing Machine 1000 tons

✓ Special projects, on board inspections

Classification Societies

✓ Professional working clothes
also with logo

✓ Uniforms

✓ Hands protection

✓ Body protection

✓ Working shoes and boots

✓ Head protection

✓ Eyes and ears protection

✓ Air masks and breathing equipments

✓ Safety harnesses

✓ Fire fighting materials

✓ Acid and chemical resistant
equipments

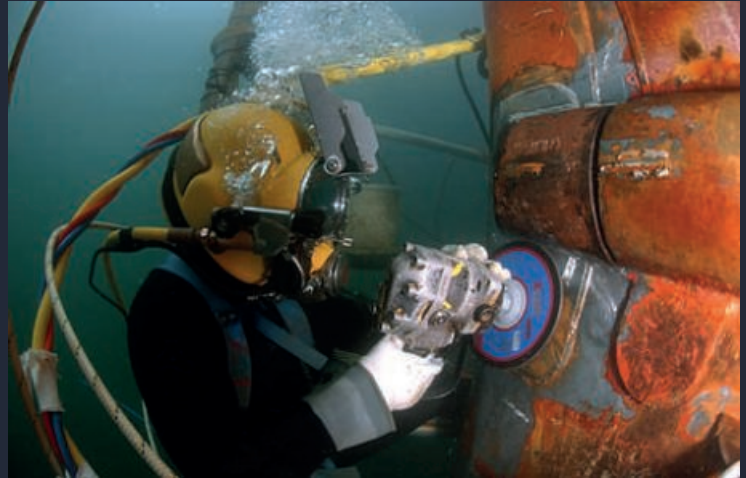
Anchors & Chains

- ✓ All Types of Anchors
- ✓ Anchor chains, Kenters Shackles, Swivels
- ✓ Deck Fittings

CONTAINER SOCKETS;



Ship Husbandry Services



Food & Beverage



Marine Bunkers Fuel & Lubricants



Security Services



Transportation & Logistic Services



Company Profile

Savalan Ship Supply and Marine Services is a strong , dynamic , well experienced and customer oriented company which is aiming to provide the highest level of performance.

The company has been established in Istanbul and head office is located in the town of Tuzla – headquarter of Ship Repair industry.

We are planning our future to become leading service company and ship supplier in Shipping business. We are committed to quality , training , service , safety and working as Partners. We are so confident our products and services will satisfy your needs.



**CONTACT
US**

Postane Mahallesi Çamlık Sokak
No:27 Tuzla - İstanbul

P: +90 216 701 25 50

E: marketing@savalanshipping.com

E: info@savalanshipping.com

W: www.savalanshipping.com